



Connected, for greater efficiency and reliability

The connected SM6, air-insulated medium-voltage switchgear



schneider-electric.com/sm6

Life Is On

Schneider
Electric

Contents

- > Meet the connected SM6 switchgear
- > 24/7 connectivity for 24/7 reliability
- > A comprehensive, flexible offer
- > Where the connected SM6 does its best work



Meet the connected SM6 switchgear

Schneider
Electric
SM6

The new SM6

24/7
connectivity

A flexible
offer

Applications



The connected SM6: better than ever

The SM6 of today combines its renowned efficiency and safety with a best-in-class digital experience.

For more than 25 years, SM6 units have protected customers around the world, in municipal grids and electro-intensive operations as well as critical commercial and industrial buildings.

Now Schneider Electric, the global specialist in energy management and automation, has added new, IoT capabilities to this proven switchgear to help you meet new challenges and thrive in an increasingly competitive environment.



The new SM6

24/7
connectivity

A flexible
offer

Applications



Enhanced for modern MV distribution

The connected SM6 range is the perfect choice for intelligent distribution, helping to secure both new and existing operations. Thanks to its innovative tools and IoT capabilities, SM6 is now future-ready. That means:

- **24/7 connectivity**, with real-time data supporting effective decision making
- **Greater efficiency**, with predictive maintenance helping reduce downtime
- **Increased safety** of people and equipment

1.5 million+
cubicles installed worldwide



SM6 at Geneva Airport

[Watch the video!](#)

The new SM6

24/7
connectivity

A flexible
offer

Applications





24/7 connectivity for 24/7 reliability

The new SM6

24/7
connectivity

A flexible
offer

Applications



Offer your customers Innovation At Every Level

The connected SM6 switchgear is a foundational element of EcoStruxure™, Schneider's IoT-enabled, open, and interoperable system architecture. The connectivity brought by SM6 means you can offer your customers greater visibility of their facilities and more control over operational health.

It also offers edge control capabilities, so you can make the right decisions at the right time to secure uptime and operational efficiency. And Schneider helps you turn the operational data into forward-looking, actionable plans.

The end result? Smarter operations and a competitive edge, for you and your customers.



The new SM6

**24/7
connectivity**



A flexible
offer

Applications



Greater efficiency with preventive maintenance

By adding sensors and condition-monitoring tools to the SM6 switchgear, facility managers' control and maintenance capabilities are greatly improved.

Thermal and environment monitoring

Thanks to 24/7 condition monitoring of hotspots, users can detect issues early and take preventive action. Alarms and warnings are delivered locally or remotely, as preferred.

Circuit breaker monitoring

Real-time monitoring of circuit breaker performance provides up-to-the-minute insight into its health, supported by alarms and warnings in case of events. Performance data can be used to create better long-term maintenance plans.



The new SM6

24/7
connectivity



A flexible
offer

Applications



Increased safety for more peace of mind

With embedded internal arc detection, the connected SM6 provides greater safety for people and assets on site.

Arc flash detection

Ultra-fast and flexible arc flash detection protects single units as well as multi-zone systems. Schneider Electric's VAMP range is an arc flash detection and protection pioneer comprising fast and reliable devices that improve safety. In addition to internal arc performance up to 20 kA, factory-installed integration of arc flash detection enhances the safety of personnel and equipment by eliminating arcs quickly and reducing the risk of damage.

The SM6 of today

ensures greater safety than ever before thanks to proven design combined with arc flash detection



VAMP 121

The new SM6

24/7
connectivity



A flexible
offer

Applications



The extended benefits of digital

The SM6 switchgear's digital capabilities extend beyond local visibility and maintenance, complemented by industry-leading software.

QR codes

Simple-to-use QR codes provide access to essential technical data, anytime and anywhere.

MySchneider app

Available for both iOS™ and Android™ platforms, mySchneider app offers easy access to product information, customer support, FAQs, and expert help.

EcoStruxure™ Facility Expert

A digital platform with a maintenance module that enables you to:

- Monitor the status of your critical assets
- Receive instant alerts in case of a power outage or asset failure
- Track preventive maintenance



The new SM6

24/7
connectivity



A flexible
offer

Applications



The value added by EcoStruxure

An essential part of the EcoStruxure architecture, SM6 integrates seamlessly with other innovative, interoperable products, unlocking new opportunities. Here are some examples.

EcoStruxure™ PowerSCADA

A fast data-acquisition monitoring and control software for improving the power availability of electrical distribution networks. A great fit for large buildings, hospitals, and data centers.

EcoStruxure™ Facility Advisor

These services, provided via certified partners, help your customers analyze and manage data, to optimize asset and maintenance management as well as reduce operational and energy costs. With cloud-based access to data, alerts, reports, as well as embedded analytics and expert recommendations, the solution is a great fit for mid-sized buildings in industry, retail, the public sector, and healthcare.



The new SM6

24/7
connectivity



A flexible
offer

Applications

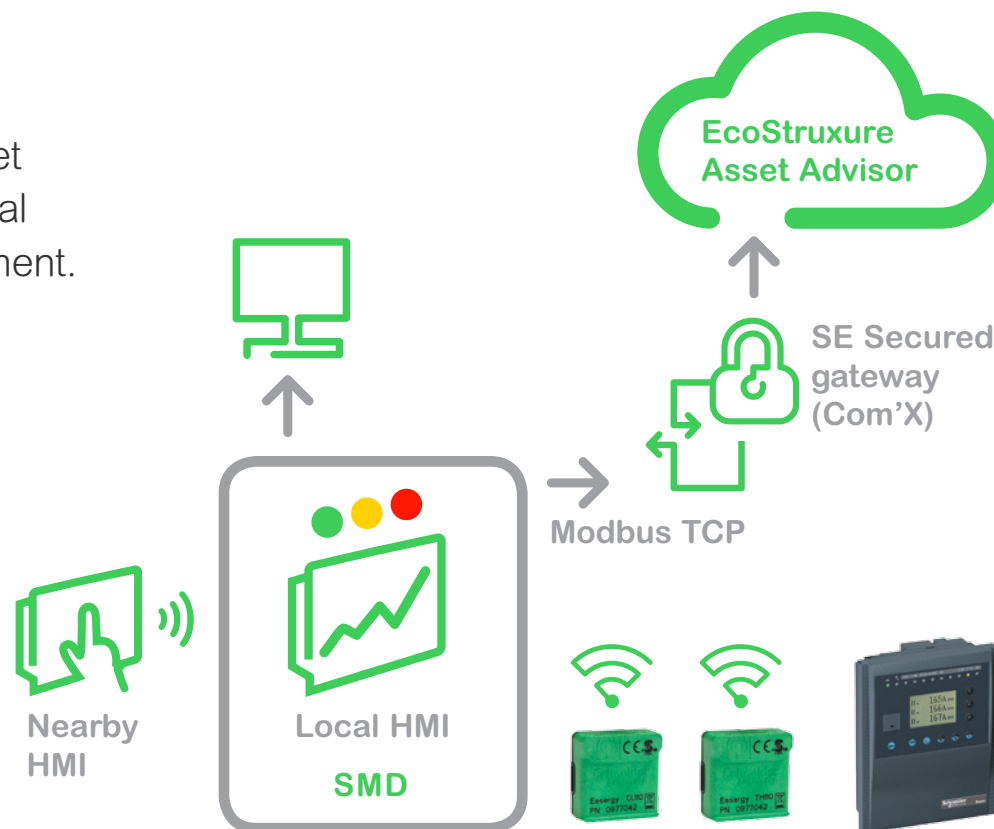


Digital services for large and electro-intensive sites

With a local HMI and cloud-based services, operator's monitoring capabilities are largely enhanced.

Thanks to ongoing expert support from the service team and subject matter experts, EcoStruxure Asset Advisor improves operational efficiency and financial performance in a cybersecurity-compliant environment.

- Identifies and addresses issues inside equipment to mitigate failure risks
- Provides actionable notifications and reports
- Supports operating expense decision-making and maintenance strategies



The new SM6

24/7
connectivity



A flexible
offer

Applications





A comprehensive, flexible offer

The new SM6

24/7
connectivity

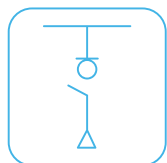
**A flexible
offer**

Applications

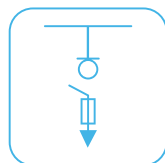


The modular, flexible SM6 range

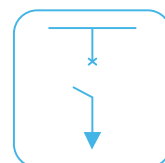
The modular SM6 range offers incredible flexibility, allowing you to meet your customers' precise requirements. Choose the functions you need to ensure service continuity, power quality, and uptime. At the same time, enjoy peace of mind knowing that the SM6 is adaptable enough to evolve with your needs. Here are some examples of SM6 functions:



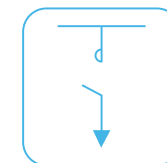
Network connection



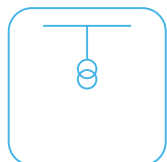
Protection by
fuse-switch



Protection by SF6
or vacuum type
circuit breaker



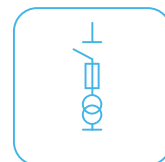
Motor control by
vacuum contactor



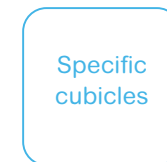
MV metering and
measurement



Cable riser



Auxiliary power
supply



Other functions e.g. standby

The new SM6

24/7
connectivity

**A flexible
offer**

Applications



Options for enhanced performance

The SM6 switchgear can be enhanced even further with optional, factory-fitted additions. Here are just a few examples of smart, IoT devices:

Substation monitoring device



Collects IoT data from smart sensors and provides meaningful information to a local monitoring HMI or remote connections

Wireless monitoring

Environment



Temperature and humidity sensors measure condensation enabling users to prevent fast aging

Thermal



Sensors detect hotspots at faulty cable connections, enabling users to take preventive action

QR code access



Fast and simple access to equipment data and documentation

Feeder automation



Fault passage indicators and voltage relays for local and remote monitoring reduce outage time and improve operation

More options for enhanced performance

Connected products available with standard delivery time:

Circuit breaker monitoring



24/7 monitoring information on circuit breakers: Health status, mechanical and MV contact aging

Arc fault detection



Helps to clear arcs faster, making the installation safer, reducing downtime and damage to the equipment

Local control panel



Control panel with local / remote switch selector and mimic

Switch controller



Allows local or remote monitoring and control of the switch / fuse switch functions

Sensors for the connected SM6

The connected SM6 includes a set of fully integrated sensors for voltage, power, current, and temperature monitoring.



- 

1 Environment monitoring (CL110)
24/7 connected monitoring to highlight condensation enabling users to prevent fast aging
- 

2 Thermal monitoring (TH110)
24/7 connected monitoring to highlight hotspots (for example faulty cable termination) and take preventive action
- 

3 Arc fault detection (VAMP)
Helps to detect and clear arcs faster, making the installation safer, reducing downtime and damage to the equipment
- 

4 Switch controller
Allows local or remote monitoring and control of the switch / fuse-switch functions, to improve safety and efficiency
- 

5 Local control panel (SCMI20)
A control panel with a local / remote switch selector and mimic

- 

6 Feeder automation (Flair23DM)
Fault passage indicators and voltage relays for local and remote monitoring to reduce outage time and improve operation
- 

7 QR code access (MySchneider app)
Fast and simple access to equipment data and documentation at your fingertips
- 

8 Substation monitoring device
Collects IoT data from smart sensors and provides meaningful information to the local monitoring HMI or remote connections
- 

9 Circuit breaker monitoring
Monitoring of circuit breaker wear, for preventive maintenance

The modular SM6 with the specifications you need

SM6-24 Switchgear up to 24 kV

SM6-36 Switchgear up to 36 kV

Circuit breaker	Fixed or withdrawable	Fixed or withdrawable
Technology	Vacuum or SF6 technology	SF6 technology
Functions	Circuit breaker, switch disconnecter, fuse switch, and contactor	Circuit breaker, switch disconnecter, and fuse switch
Rated current	400, 630, and 1250 A	630 and 1250 A
Short circuit current	Up to 25 kA	Up to 25 kA
Internal arc withstand	Downward exhaust: 12.5 kA/1s and 16 kA/1s, IAC: A-FL and A-FLR Upward exhaust: 16 kA/1s and 20 kA/1s, AFL, and AFLR	16 kA/1s, IAC: A-FL

The new SM6

24/7
connectivity

**A flexible
offer**

Applications



A photograph of an airport baggage carousel. A person's hand is seen placing a white suitcase onto the moving belt. The carousel is covered with a white protective sheet. The background shows the airport terminal environment.

Where the connected SM6 does its best work

The new SM6

24/7
connectivity

A flexible
offer

Applications



A perfect fit for your customers

The SM6 switchgear is an ideal fit for small and large buildings as well as mid-sized Food & Beverage and automotive companies. It provides high reliability, asset management efficiency, and digital empowerment – all with a long service life and easy adaptability to local requirements.

For utilities, the SM6 is suited for final open ring MV/LV substations as well as large switching substations. It is reliable and easily tailored to the requirements of the grid. Thanks to its low maintenance needs, simplicity, and connectivity, it is essential equipment for smarter grid management.

Applications:



Buildings



Data Centers
& Networks



Industry



Airports



Utilities



Healthcare



Infrastructure



Water
& Wastewater

The new SM6

24/7
connectivity

A flexible
offer

Applications



Working with SM6 has never been easier

Selecting, ordering, and installing your connected SM6 is simpler than ever. Click on the names below to explore each resource.



eCatalog 3D Power: Discover SM6 in a new interactive app



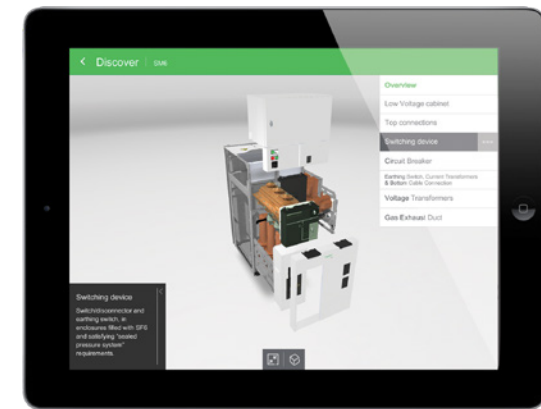
BIM models: Simplify your design



Ecoreal^{MV}: Configure and price your switchgear online



3D drawings and videos (available to registered partners):
Simulate installation to mitigate risk



The new SM6

24/7
connectivity

A flexible
offer

Applications



SM6 is serving customers around the world

Here are some examples where:

Utilities

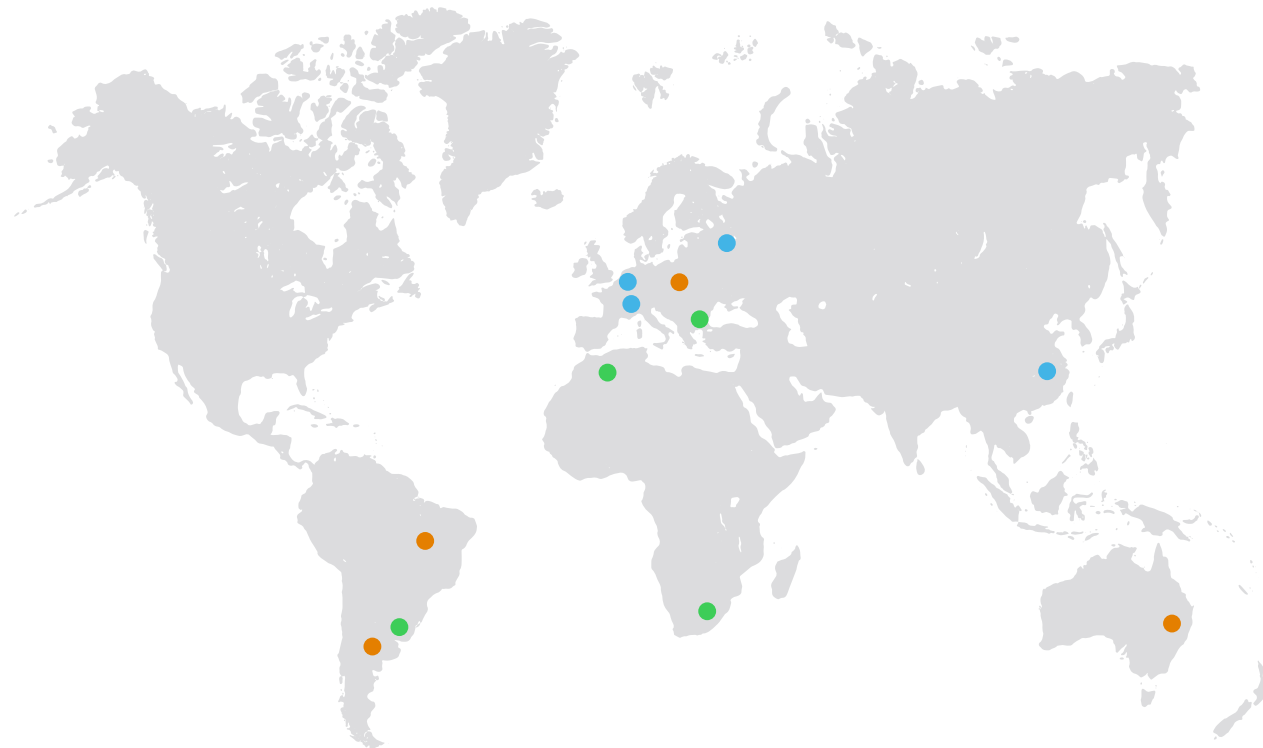
Sonelgaz, Algeria
SEC, South Africa
Edesur and Edenor, Argentina
CEZ, Bulgaria

Critical buildings

The Bank of China, China
Hotel Sheraton Brussels, Belgium
Moscow City Hall, Russia
Geneva Airport, Switzerland

Industry

General Motors Holden, Australia
Kraft Foods Argentina, Argentina
Bosch, Brazil
Lafarge, Czech Republic



The new SM6

24/7
connectivity

A flexible
offer

Applications



Life Is On



Get to know the connected SM6 even better

schneider-electric.com/sm6

Schneider Electric

35 rue Joseph Monier
92500 Rueil-Malmaison, France
Tel: +33 (0)1 41 29 70 00

©2017 Schneider Electric. All Rights Reserved. Life Is On Schneider Electric are trademarks and the property of Schneider Electric SE, its subsidiaries and affiliated companies. All other trademarks are the property of their respective owners. • 998-19933626_GMA-US

