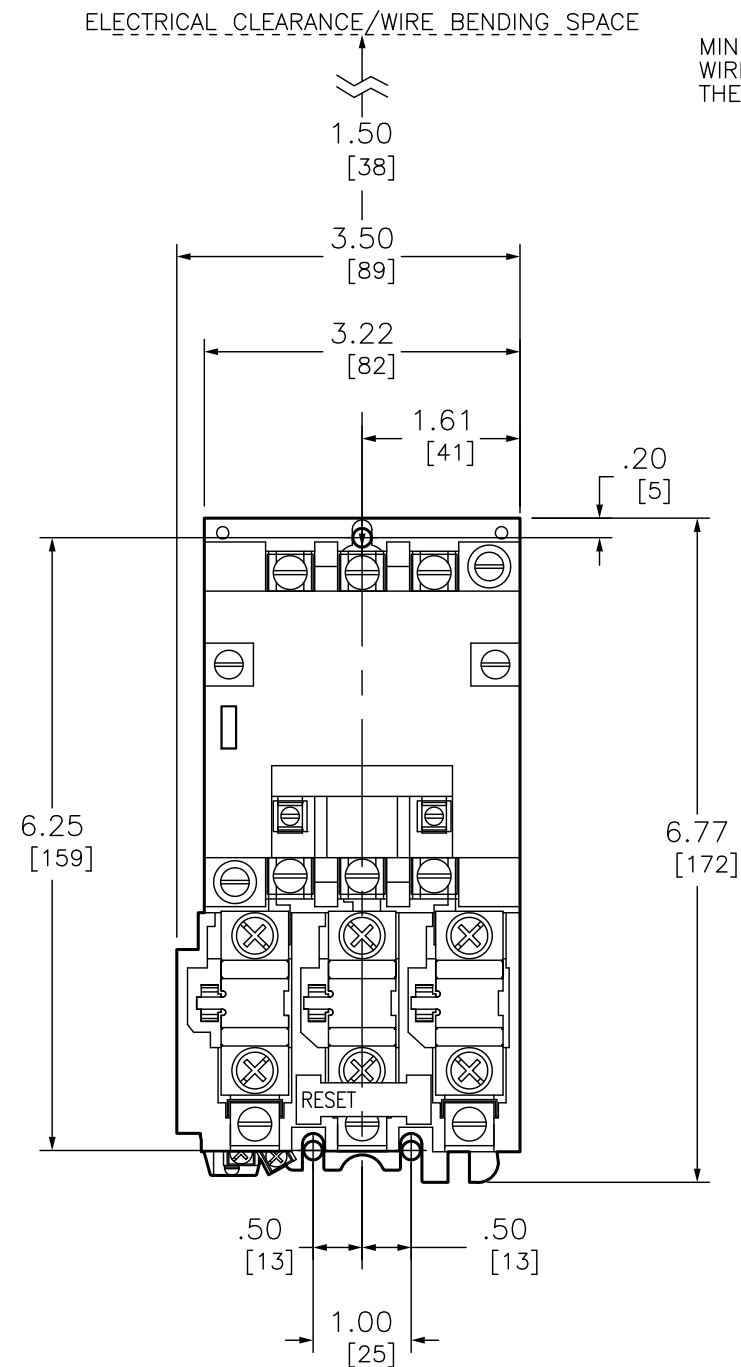


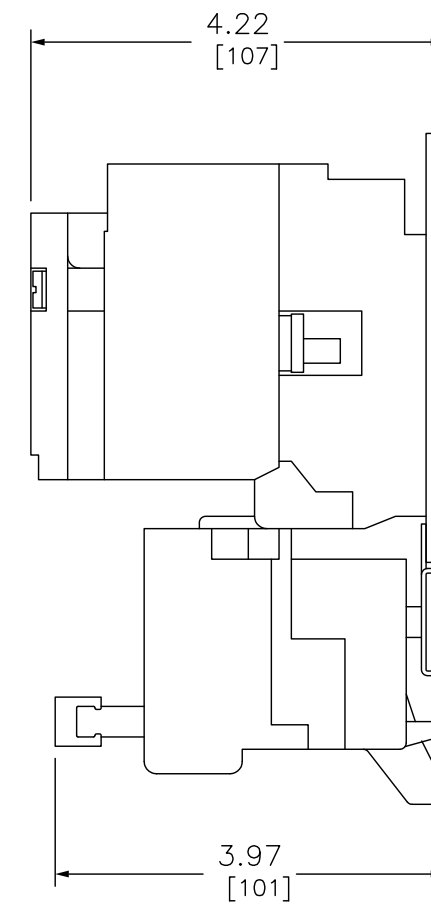
MELTING ALLOY
 NEMA SIZE 00, 0, 1 STARTER
 3-POLE POLYPHASE - 600 VAC, 50-60 HZ

NEMA SIZE	CONTINUOUS CURRENT RATING	TWO POLE (1)	THREE POLE (1)
00	9	SA011	SA012
0	18	SB01	SB02
1	27	SC02	SC03

COIL VOLTAGE CODE (2)	VOLTAGE	
	60 HZ	50 HZ
V01S	24	-
V02S	120	110
V08	208	-
V03	240	220
V06	480	440
V07	600	550
V99	SPECIFY	SPECIFY



MINIMUM TO WALL OR BARRIER TO INSURE ADEQUATE WIRE BENDING SPACE TO LUG SURFACE WHEN THE MAXIMUM WIRE SIZE IS USED. REF. NEC 430-10



Catalog Number: 8536-SB02(1)(2)
 Ratings: SEE CHART
 UL File/CCN: E78351/NLDX
 CSA File/Class: LR60905/3211 0
 Meets Standards: -
 Weight: 5 lbs
 Wire Size: POWER - #14-#8, CONTROL - #16-#12
 Terminal torque: 20 LB/IN
 Mounting Hwd.: (3) #10 screws

DUAL DIMENSIONS: INCHES
 MILLIMETERS

STARTER 600VAC 18AMP NEMA + OPTIONS



DWG# 8536SB02V01S
 NO.