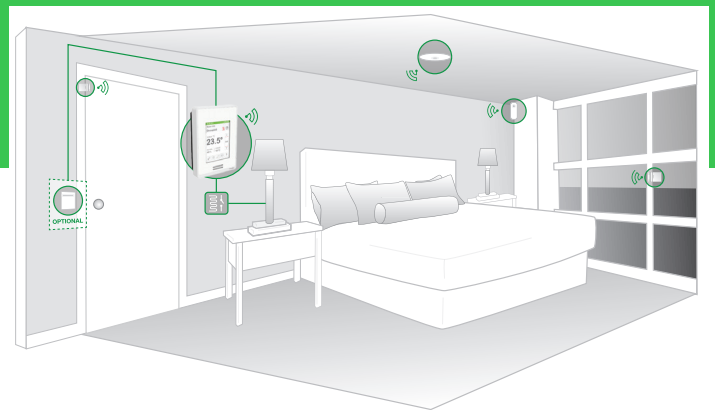


Guest Room Management

Limited Service Standalone Solution

Delivering exceptional guest satisfaction while optimizing energy efficiency.



Solution at a Glance

The solution focuses on delivering exceptional guest comfort and satisfaction while optimizing energy efficiency by offering the following:

- Enhanced comfort and convenience
- Intuitive digital experience
- Customized guest experience
- Improved brand recognition
- Visual aesthetics to complement décor
- Increased energy efficiency
- HVAC control with occupancy management and window detection
- Master switch lighting control based on occupancy

SE8000 Series Room Controller

Typical room installation includes the SER8300/SE8300 Room Controller for HVAC controls and a combination of various sensors providing the required control sequence.



General Architecture

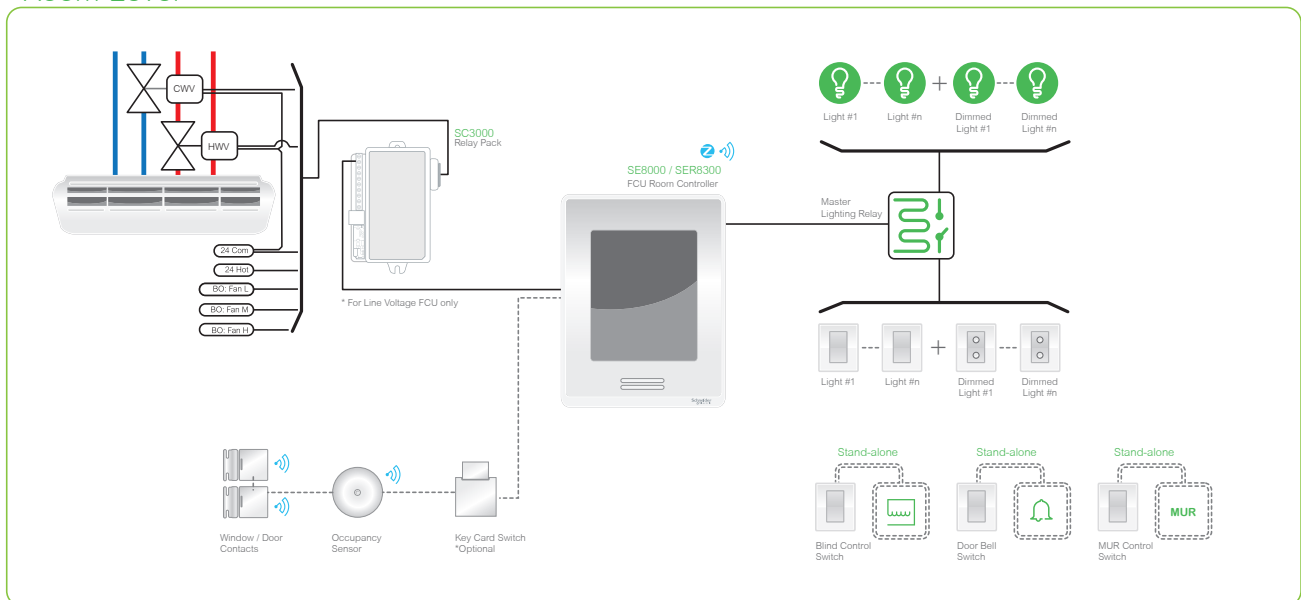
Overview

The solution focuses on delivering a high level of comfort to the guest and is also energy efficient. The SE8000 Series Room Controller is the core of the solution and determines occupancy and other room parameters from different sensors to define the room management sequence.

The Limited Service Standalone Solution also offers the following:

- Manage Fan-coil unit HVAC system using the SE8000 Series Room Controller
- Occupancy based master lighting relay control
- Does not require any integration to Building Management Systems (BMS) and/or Property Management Systems (PMS).

Room Level



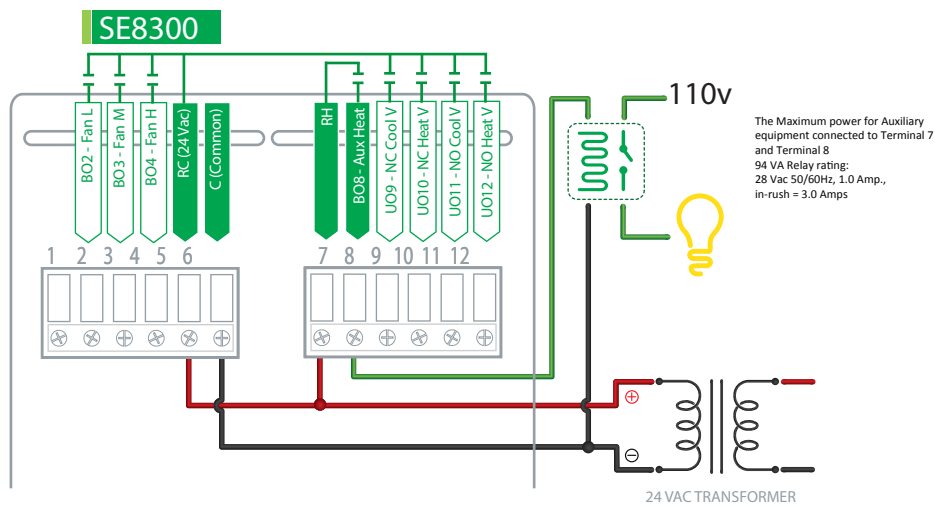
Lighting Control

Overview

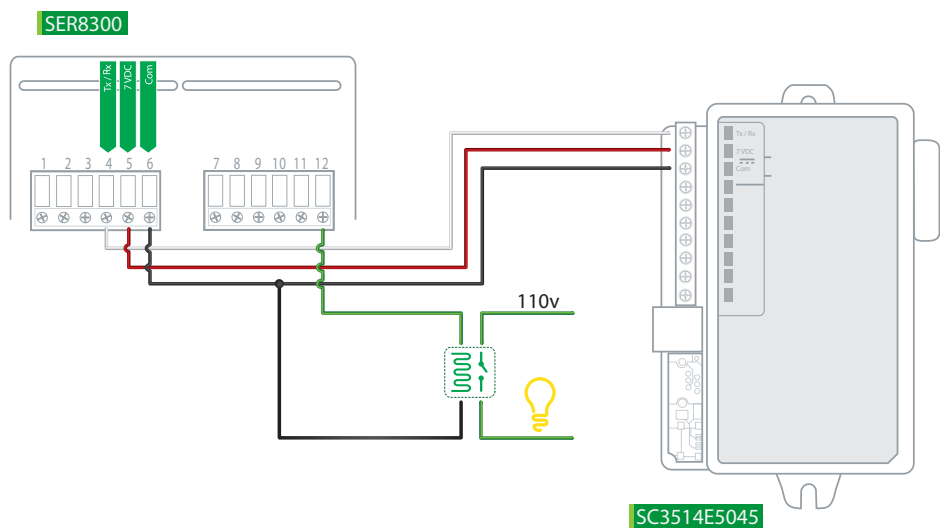
The SE8300 Series Room Controller uses a digital output to send a Master ON/OFF signal, using a Lua script, to a room lighting circuit.

- SE8300 Series Room Controller: output voltage to the relay is 24VAC
- SER8300 Series Room Controller: output voltage to the relay is 110V

SE8300 Series Room Controller



SER8300 Series Room Controller with Relay Pack



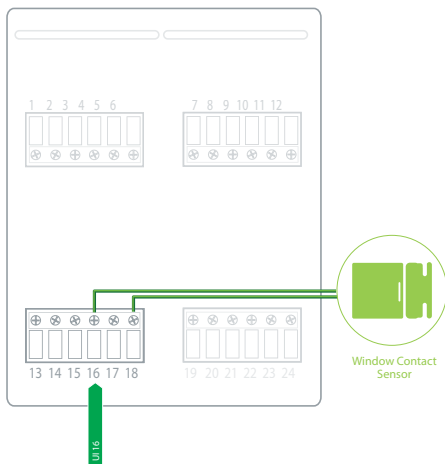
Sensors and Contacts

Wired and Wireless Peripherals

All peripherals are either wired dry contacts or wireless ZigBee Pro sensors. The recommended solution allows a combination of up to 10 ZigBee Pro sensors (door, window and motion). The wired sensor option includes a wired door contact connected to "UI 17" plus a wired window contact, wired motion sensor or wired keycard switch on "UI 16".

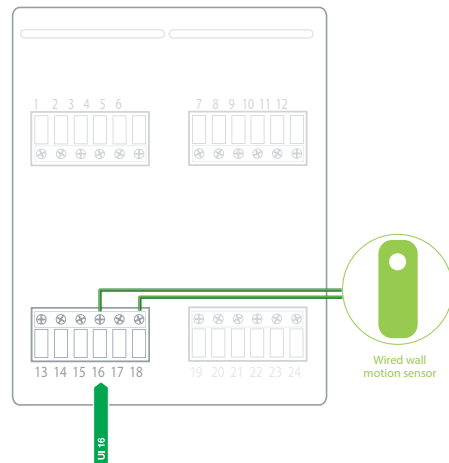
Window Contact

Shuts down HVAC system if the window or balcony door opens



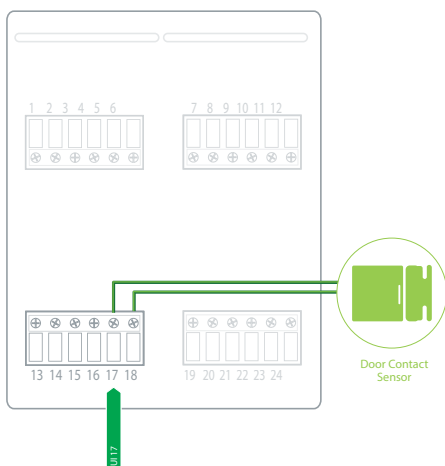
Remote Motion Sensor

Monitors occupancy



Door Contact

Alerts when door opens



Keycard Switch

Monitors occupancy

