

iEM2435 / iEM2455 / EM2214 single phase energy meter

User manual

7EN02-0468-02
03/2026



Legal Information

The information provided in this document contains general descriptions, technical characteristics and/or recommendations related to products/solutions.

This document is not intended as a substitute for a detailed study or operational and site-specific development or schematic plan. It is not to be used for determining suitability or reliability of the products/solutions for specific user applications. It is the duty of any such user to perform or have any professional expert of its choice (integrator, specifier or the like) perform the appropriate and comprehensive risk analysis, evaluation and testing of the products/solutions with respect to the relevant specific application or use thereof.

The Schneider Electric brand and any trademarks of Schneider Electric SE and its subsidiaries referred to in this document are the property of Schneider Electric SE or its subsidiaries. All other brands may be trademarks of their respective owner.

This document and its content are protected under applicable copyright laws and provided for informative use only. No part of this document may be reproduced or transmitted in any form or by any means (electronic, mechanical, photocopying, recording, or otherwise), for any purpose, without the prior written permission of Schneider Electric.

Schneider Electric does not grant any right or license for commercial use of the document or its content, except for a non-exclusive and personal license to consult it on an "as is" basis.

Schneider Electric reserves the right to make changes or updates with respect to or in the content of this document or the format thereof, at any time without notice.

To the extent permitted by applicable law, no responsibility or liability is assumed by Schneider Electric and its subsidiaries for any errors or omissions in the informational content of this document, as well as any non-intended use or misuse of the content thereof.

Safety information

Important information

Read these instructions carefully and look at the equipment to become familiar with the device before trying to install, operate, service, or maintain it. The following special messages may appear throughout this manual or on the equipment to warn of potential hazards or to call attention to information that clarifies or simplifies a procedure.



The addition of either symbol to a “Danger” or “Warning” safety label indicates that an electrical hazard exists which will result in personal injury if the instructions are not followed.



This is the safety alert symbol. It is used to alert you to potential personal injury hazards. Obey all safety messages that accompany this symbol to avoid injury or death.

DANGER

DANGER indicates a hazardous situation which, if not avoided, **will result in death or serious injury**.

Failure to follow these instructions will result in death or serious injury.

WARNING

WARNING indicates a hazardous situation which, if not avoided, **could result in death or serious injury**.

CAUTION

CAUTION indicates a hazardous situation which, if not avoided, **could result in minor or moderate injury**.

NOTICE

NOTICE is used to address practices not related to physical injury.

Please note

Electrical equipment should be installed, operated, serviced, and maintained only by qualified personnel. No responsibility is assumed by Schneider Electric for any consequences arising out of the use of this equipment. A qualified person is one who has skills and knowledge related to the construction, installation, and operation of electrical equipment and has received safety training to recognize and avoid the hazards involved.

About this manual

This manual discusses features of the iEM2435 / iEM2455 / EM2214 single phase energy meter and provides installation and configuration instructions.

Throughout the manual, the term “meter” / “device” / “equipment” / “product” refers to iEM2435 / iEM2455 / EM2214 models. The differences between the models, such as a feature specific to one model, are indicated with the appropriate model number or description.

This manual assumes you have an understanding of single phase energy meters and are familiar with the equipment and power system in which your meter is installed.

This manual does not provide configuration information for advanced features where an expert user would perform advanced configuration. It also does not include instructions on how to incorporate meter data or perform meter configuration using energy management systems or software, other than Modbus and M-Bus tool.

Make sure you are using the most up-to-date version of your device’s firmware in order to access the latest features.

The most up-to-date documentation about your device is available for download from www.se.com.

Related documents

Document	Number
iEM2435 / iEM2455 / EM2214 instruction sheet	JYT8368500 / JYT8368600

Table of Contents

Safety precautions	7
Meter overview	8
Overview of meter functions	8
Meter models	8
Feature summary	9
Configuration	9
Commissioning.....	10
Supplemental information.....	10
Meter description.....	10
Wiring.....	10
Energy consumption LEDs	11
Button functions	11
Display screen overview.....	11
Meter screen menus	11
Configuring.....	13
Configuration mode	13
Program mode 2 (Pro-2) configuration.....	14
Setting up scrolling time	14
Setting up backlight.....	14
Setting up Modbus ID (iEM2455) / M-Bus ID (iEM2435)	14
Program mode 3 (Pro-3) configuration.....	15
Setting up pulse output rate	15
Setting up combination code.....	15
Setting up baud rate.....	16
Setting the register map	16
Setting up parity (only iEM2455).....	17
Resetting power down counter	17
Setting up password.....	18
Setting up OBIS code.....	18
Resetting day counter	18
Adding or removing registers from automatic scroll.....	19
Operating	20
Viewing active energy parameters	20
Viewing reactive energy parameters	20
Viewing instantaneous (RMS) measurements.....	21
Viewing Program mode 1 (Pro-1) parameters.....	21
Maintenance and troubleshooting	23
Maintenance overview	23
Troubleshooting	23
Display errors.....	23
References.....	24
Communication via Modbus (iEM2455)	24
Overview.....	24
Register list column description.....	24
Register list	25
Command list	29
Read device identification.....	30

Communication via M-Bus (iEM2435)	31
Overview	31
Key terms	31
M-Bus protocol support	31
M-Bus protocol implementation	32
Variable data structure telegram information	32
Telegram information for data records	34
Telegram information for meter configuration	35
M-Bus tool for data display and meter configuration	37
Specifications	40

Safety precautions

Installation, wiring, testing and service must be performed in accordance with all local and national electrical codes.

⚠️⚠️ DANGER
HAZARD OF ELECTRIC SHOCK, EXPLOSION, OR ARC FLASH
<ul style="list-style-type: none"> • This product must be installed inside a suitable fire and electrical enclosure. • Apply appropriate personal protective equipment (PPE) and follow safe electrical work practices. See NFPA 70E in the USA, CSA Z462 or applicable local standards. • Do not install this product in hazardous or classified locations. • Product may use multiple voltage/power sources. Disconnect ALL sources before servicing. • Use a properly rated voltage sensing device to confirm that power is off. • Products rated only for basic insulation must be installed on insulated conductors. • Treat I/O wiring connected to multiple devices as hazardous live until determined otherwise. • Do not exceed the product’s ratings or maximum limits. • Replace the protection covers before powering the equipment. • Do not use this device for critical control or protection applications where human or equipment safety relies on the operation of the control circuit. • Do not use water or any liquid material to clean the product. Use a cleaning cloth to remove dirt. If dirt cannot be removed, contact local Technical Support representative.
Failure to follow these instructions will result in death or serious injury.

⚠️ WARNING
RISK OF INJURY OR EQUIPMENT DAMAGE
<ul style="list-style-type: none"> • Install the external fuse or thermal cut-off, external switch or single-pole circuit breaker on the phase line and not on the neutral line. The protection devices must be installed near to the meter. • The wire connecting the meter to the outside circuit, must be sized in accordance with local regulations for the maximum amount of the protection devices used in the circuit.
Failure to follow these instructions can result in death, serious injury, or equipment damage.

⚠️ WARNING
POTENTIAL COMPROMISE OF SYSTEM AVAILABILITY, INTEGRITY, AND CONFIDENTIALITY
<ul style="list-style-type: none"> • Change the default password to help prevent unauthorized access to device configuration settings and information.
Failure to follow these instructions can result in death, serious injury, or equipment damage.

Meter overview

Overview of meter functions

The iEM2435 / iEM2455 / EM2214 are single phase meters which measures the forward and reverse energy with a blue backlight LCD display.

The key features of the meters are as follows:

- Current, voltage, and energy measurements
- Total of forward and reverse active energy, total of forward and reverse reactive energy, and active power measurements
- Pulse outputs
- Tariff measurement
- Communication via M-Bus or RS-485 Modbus

For applications, feature details and complete specifications, see the iEM2435 / iEM2455 / EM2214 datasheet at www.se.com.

Meter models

Model	Commercial reference	Description
iEM2435	A9MEM2435	<ul style="list-style-type: none"> • Communication via M-Bus • Active energy - Class B as per EN 50470-1/3; Class 1 as per IEC 62053-21 • Reactive energy - Class 2 as per IEC 62053-23 • MID / MIR compliance
iEM2455	A9MEM2455	<ul style="list-style-type: none"> • Communication via RS-485 Modbus • Active energy - Class B as per EN 50470-1/3; Class 1 as per IEC 62053-21 • Reactive energy - Class 2 as per IEC 62053-23 • MID / MIR compliance
EM2214	METSEEM2214	<ul style="list-style-type: none"> • Active energy - Class B as per EN 50470-1/3; Class 1 as per IEC 62053-21 • Reactive energy - Class 2 as per IEC 62053-23 • MID / MIR compliance
<p>NOTE: The iEM2455 meter uses a two-wire Modbus connection. Ensure that the Modbus transmission line does not exceed 10 meters to maintain reliable communication.</p> <p>NOTE: When combining the iEM2455 meter with three-wire Modbus equipment (signals + 0V common), connect the meter through a branch circuit using an LU9GC3 splitter and a VW3A8306D30 cable. This configuration ensures proper signal referencing and communication reliability.</p>		

Feature summary

Function	iEM2435	iEM2455	EM2214
4 quadrant energy measurements, partial and total energy counter	√	√	√
Total of forward and reverse active energy	√	√	√
Total of forward and reverse reactive energy	√	√	√
Power: <ul style="list-style-type: none"> • Active power (kW) • Apparent power (kVA) • Reactive power (kVAR) 	√	√	√
Voltage, current, frequency and power factor	√	√	√
2 tariff control through command register	√	√	-
Pulse outputs	√	√	√
Communication	M-Bus	RS-485 Modbus	-
MID / MIR compliant	√	√	√

Configuration

The iEM2435 / iEM2455 meters configuration can be performed through the HMI display or through communication tool via M-Bus or RS-485 Modbus.

The EM2214 meter configuration can be performed through the HMI display.

Commissioning

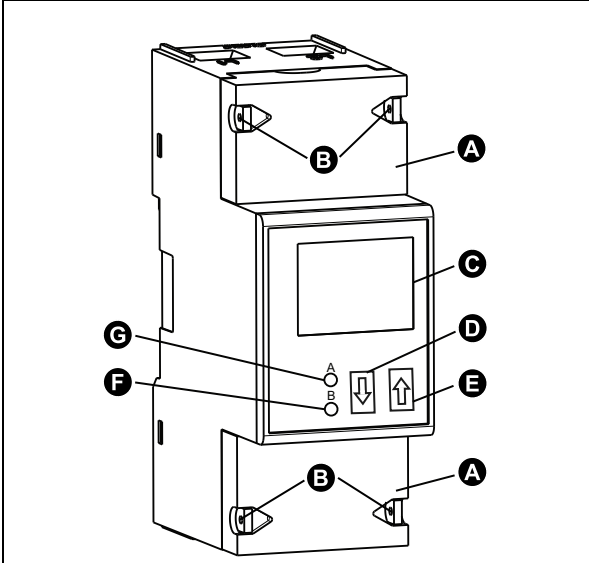
Supplemental information

This document is intended to be used in conjunction with the instruction sheet that ships in the box with the meter.

See the meter's instruction sheet for information related to installation.

You can download updated documentation from www.se.com or contact your local Schneider Electric representative for the latest information about your product.

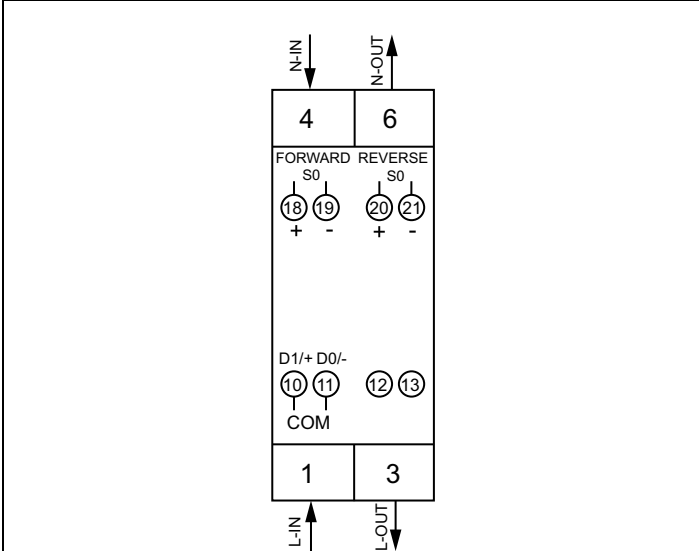
Meter description



A	Protection covers
B	Sealing points
C	Blue backlight LCD display
D	Down-arrow button (touch sensitive)
E	Up-arrow button (touch sensitive)
F	Active energy consumption LED (B=10000 imp/kWh)
G	Reactive energy consumption LED (A=10000 imp/kVARh)

NOTE: The protection covers (A) must be installed and sealed to the sealing points (B) with the steel cable of 1 mm (0.04 in) diameter.

Wiring



1	Phase line in (L-IN)
3	Phase line out (L-OUT)
4	Neutral line in (N)
6	Neutral line out (N)
10 & 11	M-bus / Modbus communication for iEM2435 / iEM2455
12 & 13	Not used
18 (+) & 19 (-)	Pulse output (S0) forward
20 (+) & 21 (-)	Pulse output (S0) reverse








Recommended cable material: Copper wire

Energy consumption LEDs

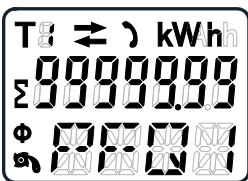
The two red LEDs on the front panel indicates the energy consumption. When power is consumed, the LEDs flash. When more power is consumed, the LEDs flash at a faster rate.

The reactive energy consumption LED (A=10000 imp/kVARh) flashes during reactive energy consumption and the active energy consumption LED (B=10000 imp/kWh) flashes during active energy consumption. The LEDs flash at 10000 imp/kWh.

Button functions

Action	Button function
Hold the up-arrow button  or down-arrow button  for less than 3 seconds	To enable scroll. NOTE: After 30 seconds of no interaction the meter goes back to automatic scroll mode.
Hold the up-arrow button  for 3 seconds	To enter the next menu.
Hold the down-arrow button  for 3 seconds	To go back to previous menu.
Hold both down-arrow button  and up-arrow button  for 3 seconds	To confirm settings.
Hold the up-arrow button  for ≥5 seconds	To enter program mode. To add or remove from the automatic scroll.

Display screen overview



The blue backlight LCD display as shown in the image has three rows:

- The first row displays tariff indication, energy flow direction, communication status and unit.
- The second row displays the value per unit.
- The last row displays all other metering information or OBIS codes.

Touch the up-arrow or down-arrow button to turn ON the back light. After 30 seconds of inactivity, the backlight switches OFF. On power up, the meter scrolls through the pages in an interval of 10 seconds (default setting).

The meter is equipped with a 7-digit LCD. For the energy consumption the meter displays 99999.99 kWh and automatically changes to 999999.9 kWh when the value exceeds and so on.

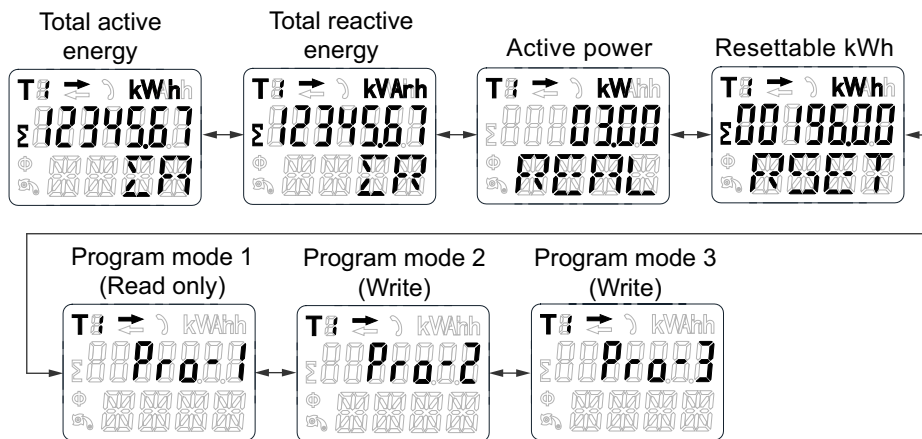
The first display indication of the meter in the scrolling mode is either FW (forward) or RV (reverse).

Meter screen menus

The meter screens are grouped logically, according to their function. The meter's display screen and the buttons allow you to view the various parameters.

You can access any available meter screen by first selecting the main menu (top level) screen that contains it.

NOTE: The menu screens shown throughout this user manual depicts when tariff mode is selected for T1 unless otherwise specified.

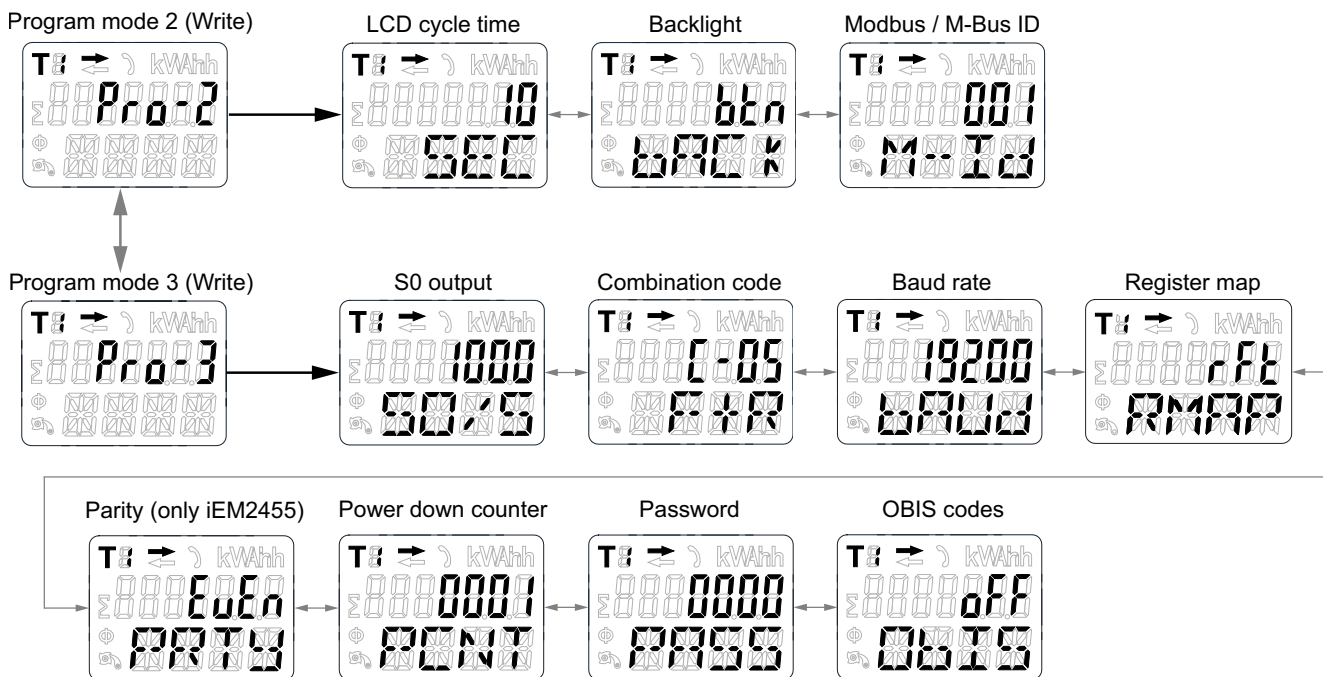


Configuring

Configuration mode

The program mode 2 (**Pro-2**) and program mode 3 (**Pro-3**) in the meter HMI allows you to configure various setup parameters.

Configuration mode menu tree



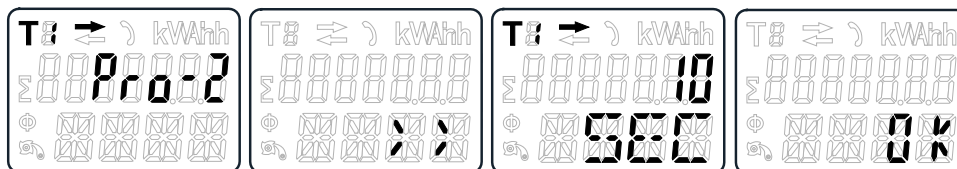
Menu	Parameters	Options	Default values	
Program mode 2 (Pro-2)	LCD cycle time	1 – 30 seconds	10	
	Backlight	on / off / btn	btn	
	iEM2435	M-Bus ID	000 – 250	000
	iEM2455	Modbus ID	001 – 247	001
Program mode 3 (Pro-3)	Pulse output (S0) rate	1000 / 100 / 10 / 1 / 0.1 / 0.01 / 2000 / 10000	1000	
	Combination code	C-01 (F) / C-04 (R) / C-05 (F+R) / C-06 (R-F) / C-09 (F-R) / C-10 (F-R)	C-05 (F+R)	
	iEM2435	Baud rate	300 / 600 / 1200 / 2400 / 4800 / 9600	2400
	iEM2455		1200 / 2400 / 4800 / 9600 / 19200 / 38400	19200
	Register Map (only iEM2455)	rft / SE	rft	
	Parity (only iEM2455)	even / none / odd	even	
	Power down counter	–	–	
	Password	0000 - 9999	0000	
OBIS codes	on / off	off		

Program mode 2 (Pro-2) configuration

Setting up scrolling time

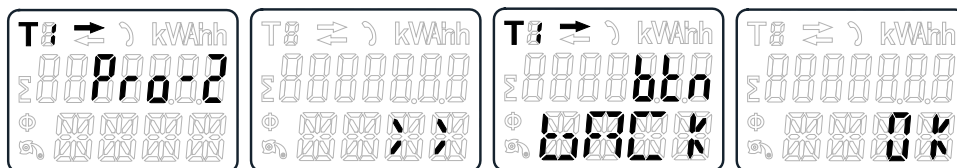
In automatic scroll, for every 10 seconds (default setting) the meter displays the next programmed data page.

To change the scrolling time, follow these steps:



1. Scroll with the buttons to Program mode 2 (**Pro-2**).
2. Hold the up-arrow button for 3 seconds to enter the menu.
3. Scroll to LCD cycle time (**SEC**) page.
4. Hold the up-arrow button for 5 seconds to enter program mode.
5. When the value starts blinking: select the new value between 1 – 30 seconds.
6. Hold both buttons for 3 seconds to confirm the new scrolling time.
7. The LCD displays **OK** when the setting is confirmed.

Setting up backlight

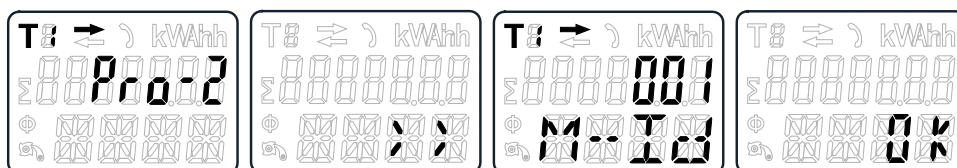


1. Scroll with the buttons to Program mode 2 (**Pro-2**).
2. Hold the up-arrow button for 3 seconds to enter the menu.
3. Scroll to backlight setting (**bACK**) page.
4. Hold the up-arrow button for 5 seconds to enter program mode.
5. When the value starts blinking: select **on** / **oFF** / **btn**.
6. Hold both buttons for 3 seconds to confirm the new setting.
7. The LCD displays **OK** when the setting is confirmed.

Setting up Modbus ID (iEM2455) / M-Bus ID (iEM2435)

The Modbus ID (iEM2455) can be set from 001 to 247. The M-Bus ID (iEM2435) can be set from 000 to 250.

To change the Modbus ID (iEM2455) / M-Bus ID (iEM2435), follow these steps:



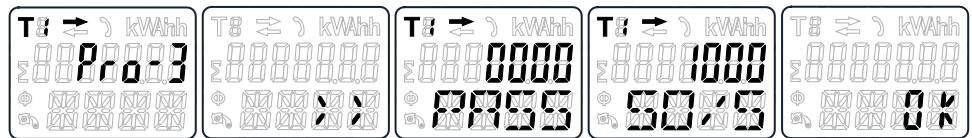
1. Scroll with the buttons to Program mode 2 (**Pro-2**).
2. Hold the up-arrow button for 3 seconds to enter the menu.

3. Scroll to Modbus ID (iEM2455) / M-Bus ID (iEM2435) (**M-Id**) page.
4. Hold the up-arrow button for 5 seconds to enter program mode.
5. When the value starts blinking: select 3 digits (Modbus (iEM2455): **001 – 247** / M-Bus (iEM2435): **000 – 250**).
6. Hold both buttons for 3 seconds to confirm each digit.
7. The LCD displays **OK** when the setting is confirmed.

Program mode 3 (Pro-3) configuration

Setting up pulse output rate

The meter is equipped with two pulse outputs (forward and reverse) which are optically isolated from the inside circuit. The meter generates pulses in proportion to the measured consumption for purpose of remote reading or accuracy testing. The pulse output is a polarity dependent, open-collector transistor output which requires an external voltage source for correct operation. For this external voltage source, the voltage (U_i) should be less than 27 V DC. The maximum switching current (I_{max}) is 100 mA. To connect the impulse output, connect 5 – 27 V DC to connector 18/20 (collector), and the signal wire (S) to connector 19/21 (emitter). To change the pulse output (S0) rate, follow these steps:



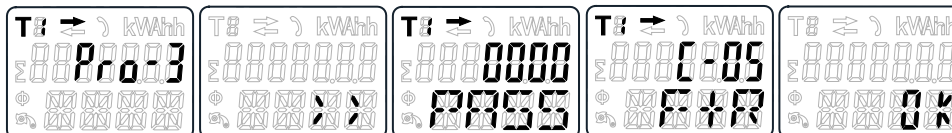
1. Scroll with the buttons to Program mode 3 (**Pro-3**).
2. Hold the up-arrow button for 3 seconds to enter the menu.
3. Enter the 4 digit password (default: **0000**): scroll with the buttons and select each digit 0 – 9, hold the up-arrow button for 3 seconds to confirm each digit.
4. Scroll to S0 output (**S0/S**) page.
5. Hold the up-arrow button for 5 seconds to enter program mode.
6. When the value starts blinking: select **10000 / 2000 / 1000 / 100 / 10 / 1 / 0.1 / 0.01**.
7. Hold both buttons for 3 seconds to confirm the new setting.
8. The LCD displays **OK** when the setting is confirmed.

Setting up combination code

The meter allows you to display the total energy (usage) based on the combination code. The combination code is in accordance with different calculation methods as shown below:

Code	Total (active) energy
C-01	Forward only
C-04	Reverse only
C-05	Forward + Reverse
C-06	Reverse - Forward
C-09	Forward - Reverse
C-10	Forward - Reverse

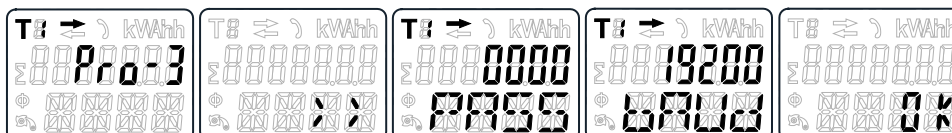
To change the combination code, follow these steps:



1. Scroll with the buttons to Program mode 3 (**Pro-3**).
2. Hold the up-arrow button for 3 seconds to enter the menu.
3. Enter the 4 digit password (default: **0000**): scroll with the buttons and select each digit 0 – 9, hold the up-arrow button for 3 seconds to confirm each digit.
4. Scroll to combination code (**C-xx**) page.
5. Hold the up-arrow button for 5 seconds to enter program mode.
6. When the value starts blinking: select **01 / 04 / 05 / 06 / 09 / 10**.
7. Hold both buttons for 3 seconds to confirm the new setting.
8. The LCD displays **OK** when the setting is confirmed.

Setting up baud rate

The Modbus (iEM2455) baud rate can be set from 1200 to 38400. The M-bus (iEM2435) baud rate can be set from 300 to 9600. To change the baud rate, follow these steps:



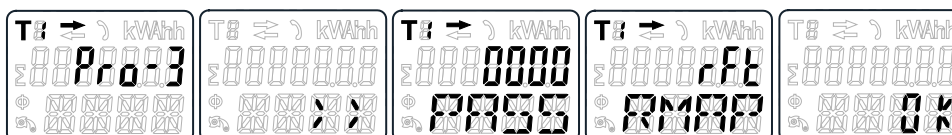
1. Scroll with the buttons to Program mode 3 (**Pro-3**).
2. Hold the up-arrow button for 3 seconds to enter the menu.
3. Enter the 4 digit password (default: **0000**): scroll with the buttons and select each digit 0 – 9, hold the up-arrow button for 3 seconds to confirm each digit.
4. Scroll to baud rate (**bAUd**) page.
5. Hold the up-arrow button for 5 seconds to enter program mode.
6. When the value starts blinking, select:
 - Modbus (iEM2455): 1200 / 2400 / 4800 / 9600 / 19200 / 38400
 - M-Bus (iEM2435): 300 / 600 / 1200 / 2400 / 4800 / 9600
7. Hold both buttons for 3 seconds to confirm the new setting.
8. The LCD displays **OK** when the setting is confirmed.

Setting the register map

The register map is a structured table that defines how data is stored and accessed within the energy meter.

NOTE: Select **SE RMAP** to access the register address that is one offset lower than the current **RFT** register address.

To set the register map:



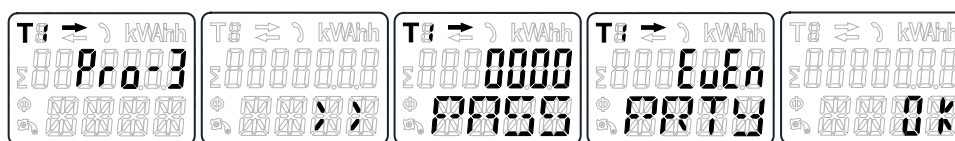
1. Press the up or down arrow button to navigate to Program mode 3 (**Pro-3**).
2. Press and hold the up-arrow button for 3 seconds to open the menu.

3. Press the up or down arrow button to choose each digit of the 4-digit password (default is 0000). Hold the up-arrow button for 3 seconds to confirm each digit.
4. Press the up or down arrow button to scroll to the register map (**RMAP**) page.
5. Press and hold the up-arrow button for 5 seconds to go to program mode.
6. Press the up or down arrow button to select **rFt / SE** when the value starts blinking.
7. Press and hold both buttons for 3 seconds to confirm the new setting.

Result: The meter displays “OK” on the LCD to confirm the setting.

Setting up parity (only iEM2455)

The Modbus (iEM2455) parity can be set to **EvEn**, **nonE** or **odd**. The M-bus (iEM2435) parity is always **EvEn**. To change the parity, follow these steps:

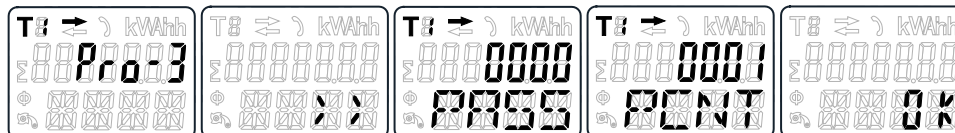


1. Scroll with the buttons to Program mode 3 (**Pro-3**).
2. Hold the up-arrow button for 3 seconds to enter the menu.
3. Enter the 4 digit password (default: **0000**): scroll with the buttons and select each digit 0 – 9, hold the up-arrow button for 3 seconds to confirm each digit.
4. Scroll to parity (**PRTY**) page.
5. Hold the up-arrow button for 5 seconds to enter program mode.
6. When the value starts blinking: select **EvEn / nonE / odd**.
7. Hold both buttons for 3 seconds to confirm the new setting.
8. The LCD displays **OK** when the setting is confirmed.

Resetting power down counter

The power down counter registers the number of times the meter has been turned off.

To reset the power down counter, follow these steps:

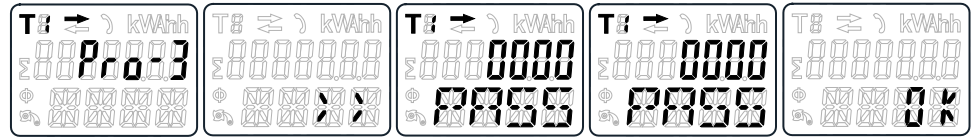


1. Scroll with the buttons to Program mode 3 (**Pro-3**).
2. Hold the up-arrow button for 3 seconds to enter the menu.
3. Enter the 4 digit password (default: **0000**): scroll with the buttons and select each digit 0 – 9, hold the up-arrow button for 3 seconds to confirm each digit.
4. Scroll to power down counter (**PCNT**) page.
5. Hold the up-arrow button for 5 seconds to enter program mode.
6. When the value starts blinking: hold both buttons for 3 seconds to reset.
7. The LCD displays **OK** when the power down counter is reset.

Setting up password

The Program mode 3 (**Pro-3**) is protected with a password. The default password is **0000**.

To change the password, follow these steps:

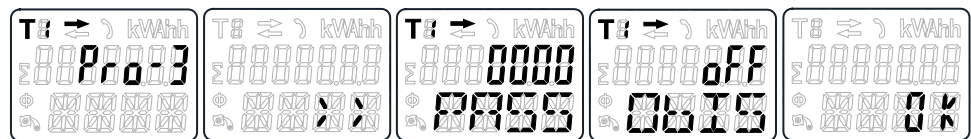


1. Scroll with the buttons to Program mode 3 (**Pro-3**).
2. Hold the up-arrow button for 3 seconds to enter the menu.
3. Enter the 4 digit password (default: **0000**): scroll with the buttons and select each digit 0 – 9, hold the up-arrow button for 3 seconds to confirm each digit.
4. Scroll to password (**PASS**) page.
5. Hold the up-arrow button for 5 seconds to enter program mode.
6. When the value starts blinking: select each digit 0 - 9, hold both buttons for 3 seconds to confirm each digit.
7. The LCD displays **OK** when the setting is confirmed.

Setting up OBIS code

You can set the OBIS code to **on** in Program mode 3 (**Pro-3**). The default setting for OBIS code is **off**.

To set the OBIS code, follow these steps:

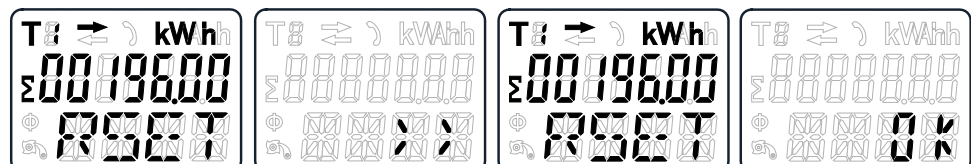


1. Scroll with the buttons to Program mode 3 (**Pro-3**).
2. Hold the up-arrow button for 3 seconds to enter the menu.
3. Enter the 4 digit password (default: **0000**): scroll with the buttons and select each digit 0 – 9, hold the up-arrow button for 3 seconds to confirm each digit.
4. Scroll to OBIS (**ObIS**) page.
5. Hold the up-arrow button for 5 seconds to enter program mode.
6. When the value starts blinking: select **on** or **off**.
7. Hold both buttons for 3 seconds to confirm new setting.
8. The LCD displays **OK** when the setting is confirmed.

Resetting day counter

The meter is equipped with a day counter for consumed energy. The consumed energy is the energy forward calculated and can be reset to zero (0).

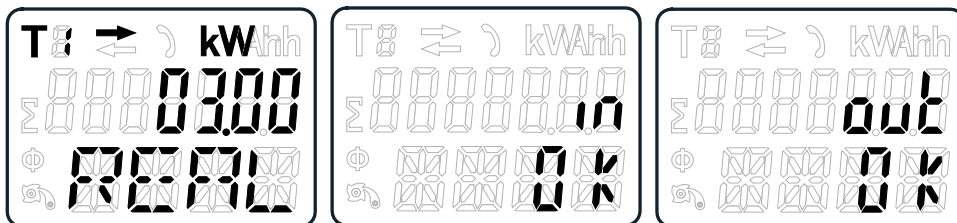
To reset the day counter to zero (0), follow these steps:



1. Scroll with the buttons to resettable kWh (**RSET**) page in the main menu.

2. Hold the up-arrow button for 3 seconds to enter the menu.
3. When the value starts blinking: hold the up-arrow button for 5 seconds to reset.
4. The LCD displays **OK** when the day counter is reset.

Adding or removing registers from automatic scroll

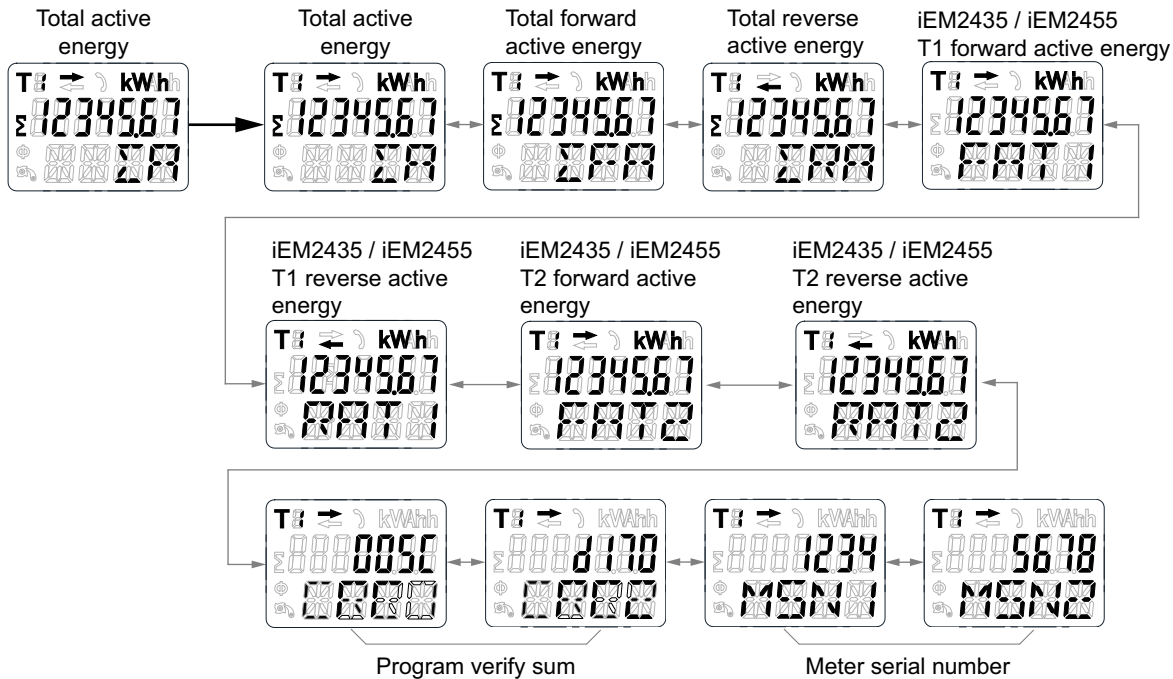


1. Scroll to the register that you need to add or remove.

NOTE: Only the registers in the sub-menu after the total active energy, total reactive energy, active power and Program mode 1 can be added or removed to / from the automatic scroll. Total active energy cannot be removed.
2. Hold the up-arrow button for 5 seconds to add or remove the register.
3. The LCD displays **in OK** or **out OK**.

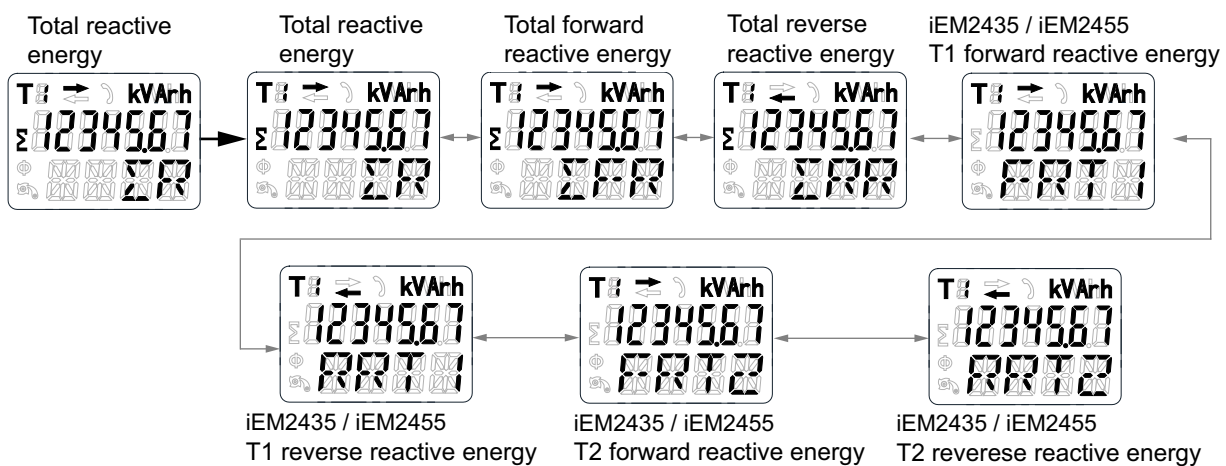
Operating

Viewing active energy parameters



1. Scroll with the buttons to total active energy (ΣA) register in the main menu.
2. Hold the up-arrow / button for 3 seconds to enter the next menu.
The display shows >>.
3. Hold the down-arrow or up-arrow button to scroll through various active energy parameter pages.
4. Hold the down-arrow button for 3 seconds to go back to main menu.
The display shows <<.

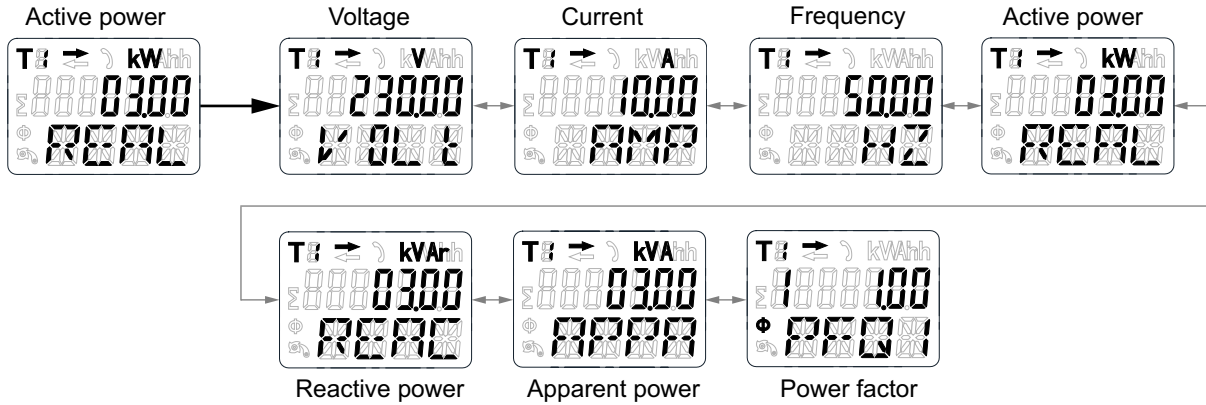
Viewing reactive energy parameters



1. Scroll with the buttons to total reactive energy (ΣR) register in the main menu.
2. Hold the up-arrow button for 3 seconds to enter the next menu.
The display shows >>.

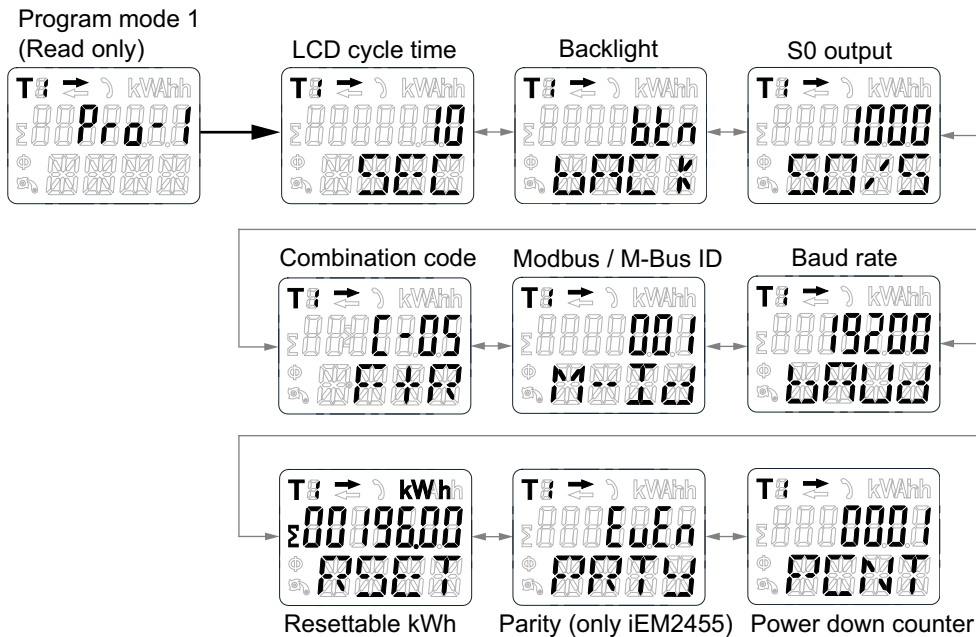
3. Hold the down-arrow or up-arrow button to scroll through various reactive energy parameter pages.
4. Hold the down-arrow button for 3 seconds to go back to main menu.
The display shows <<.

Viewing instantaneous (RMS) measurements



1. Scroll with the buttons to active power (**REAL**) register in the main menu.
2. Hold the up-arrow button for 3 seconds to enter the next menu.
The display shows >>.
3. Hold the down-arrow or up-arrow button to scroll through various instantaneous (RMS) measurement pages.
4. Hold the down-arrow button for 3 seconds to go back to main menu.
The display shows <<.

Viewing Program mode 1 (Pro-1) parameters



1. Scroll with the buttons to Program mode 1 (**Pro-1**) register in the main menu.
2. Hold the up-arrow button for 3 seconds to enter the next menu.
The display shows >>.

3. Hold the down-arrow or up-arrow button to scroll through various Program mode 1 (**Pro-1**) parameter pages.
4. Hold the down-arrow button for 3 seconds to go back to main menu.
The display shows <<.

Maintenance and troubleshooting

Maintenance overview

The meter does not contain any user-serviceable parts. If the meter requires service, contact your local Schneider Electric Technical Support representative.

NOTICE
<p>EQUIPMENT DAMAGE</p> <ul style="list-style-type: none"> • Do not open the device case. • Do not attempt to repair any components of the device. <p>Failure to follow these instructions can result in equipment damage.</p>

Do not open the meter. Opening the meter voids the warranty.

Troubleshooting

Problem	Probable cause	Possible solution
The red consumption LED is not flashing (Pulse LED).	There is no load connected to the meter.	Connect load to the meter.
	The load on the line is very low.	Check with multimeter, if the load value is very low.
The register does not count.	There is almost no load connected to the meter.	Check if the red consumption LED is flashing.
No pulse output.	The pulse output is not supplied with DC power. The pulse output is not connected correctly.	Check the external voltage source (U _i) is 5 – 27 V DC with a voltmeter. Check if the connection is correct: the 5 – 27 V DC should be connected to the collector connection (pin 18/ 20+) and the signal wire (S) to the emitter connection (pin 19/ 21-).
The pulse output rate is wrong.	Is the correct pulse rate set via the Modbus tool or in Program mode 3?	Use the Modbus tool which can be bought separately.

If the problem is not fixed after troubleshooting, contact Technical Support for help.

Display errors

Display shows	Kind of errors	Solution
Err 01	Memory error	Please contact your local Schneider Electric representative for meter replacement
Err 02	Program code checksum error	

References

Communication via Modbus (iEM2455)

Overview

The meter can communicate with your PC. In order to read out the meter registers, install and configure the PC software. Use an RS-485 converter to connect the PC and the meter.

The cable should be connected to terminals 10 and 11. The default communication address of the meter is 01.

The Modbus implementation used is Modbus basic (standard) with the following settings:

- Baud rate 19200
- 8 data bits
- Even parity
- 1 stop bit

The baud rate values can be changed to 1200, 2400, 4800, 9600, 38400. The parity can be set to none or odd. Data and stop bit cannot be changed.

NOTE:

When connecting the meter through a serial converter (RS-485) for testing, position an additional resistor (120 Ω / 0.25 W) across the terminals (10 and 11) on the meter side.

Register list column description

Address	A 16-bit register address in hexadecimal. The address is the data used in the Modbus frame.
Register	A 16-bit register number in decimal (register = address + 1)
Action	R = Read only register W = Write only register RW = Read Write register RWC = Read register, write through Command register
Size	Data size in number of registers
Type	Data type
Units	Unit of the register value
Description	Information about the register and the range and values that apply

The Modbus register list data types are as follows:

Type	Description	Range
UInt16	16 bit unsigned integer	0 to 65535
UInt32	32 bit unsigned integer	0 to 4294967295
Int64	64 bit signed integer	-9223372036854775808 to +9223372036854775807
UTF8	8 bit field	Multibyte character encoding for Unicode
Float32	IEEE 754-1985 single precision floating-point value	-3.4E38 to +3.4E38
4Q FP PF	Four quadrant floating point power factor	-2 to +2
Bitmap	—	—

Register list

System

RFT		SE		Action	Size	Type	Units	Description
Address	Register	Address	Register					
0x001E	31	0x001D	30	R	20	UTF8	-	Meter name Default: Power Meter
0x0032	51	0x0031	50	R	20	UTF8	-	Meter model Default: iEM2455
0x0046	71	0x0045	70	R	20	UTF8	-	Manufacturer Default: Schneider Electric
0x005A	100	0x0059	99	R	1	UInt16	-	Meter code
0x0082	131	0x0081	130	R	2	UInt32	-	Serial number
0x0088	137	0x0087	136	R	5	UTF8	-	Hardware revision in x.x.x format Default: 1.0.0 NOTE: The first number is the major version, the second number is the minor version, and the third number is normally not used.
0x0665	1638	0x0664	1637	R	1	UInt16	-	Present firmware version

Meter setup and status

RFT		SE		Action	Size	Type	Units	Description
Address	Register	Address	Register					
0x0725	1830	0x0724	1829	R	1	UInt16	-	Power on off counter Default: 1
0x07DE	2015	0x07DD	2014	R	1	UInt16	-	Number of phases (Always 1)
0x07DF	2016	0x07DE	2015	R	1	UInt16	-	Number of wires (Always 2)
0x07E0	2017	0x07DF	2016	R	1	UInt16	-	Power system (Always 0 = 1PH2W L-N)
0x07E1	2018	0x07E0	2017	R	1	UInt16	Hz	Nominal frequency Default: 50
0x07E4	2021	0x07E3	2020	R	2	Float32	A	Meter amps Default: 100

Register Map selection

RFT		SE		Action	Size	Type	Units	Description
Address	Register	Address	Register					
0x1AD6	6871	0x1AD5	6870	R	1	UInt16	-	Register Map selection Default: rFt

Command interface

RFT		SE		Action	Size	Type	Units	Description
Address	Register	Address	Register					
0x1482	5251	0x1481	5250	W	1	UInt16	-	Requested command
0x1483	5252	0x1482	5251	W	1	UInt16	-	Reserved for future use
0x1484 - 0x148D	5253 - 5262	0x1483 - 0x148C	5252 - 5261	W	1	UInt16	-	Command parameter 001 -010
0x14FF	5376	0x14FE	5375	R/W	1	UInt16	-	Command status
0x1500	5377	0x14FF	5376	R/W	1	UInt16	-	Command result codes: <ul style="list-style-type: none"> • 0 = Valid and successful command • 3000 = Invalid command • 3001 = Invalid parameter • 3002 = Invalid number of parameters • 3007 = Command is valid but the operation was not performed

Display

RFT		SE		Action	Size	Type	Units	Description
Address	Register	Address	Register					
0x17D4	6101	0x17D3	6100	R/WC	1	UInt16	-	LCD cycle time Default: 10

Communication

RFT		SE		Action	Size	Type	Units	Description
Address	Register	Address	Register					
0x1965	6502	0x1964	6501	R/WC	1	UInt16	-	RS-485 communication port address 1 – 247 Default: 1
0x1966	6503	0x1965	6502	R/WC	1	UInt16	-	RS-485 communication baud rate <ul style="list-style-type: none"> • 0 = 9600 • 1 = 19200 (default) • 2 = 38400 • 3 = 4800 • 4 = 2400 • 5 = 1200
0x1967	6504	0x1966	6503	R/WC	1	UInt16	-	RS-485 communication parity <ul style="list-style-type: none"> • 0 = Even (default) • 1 = Odd • 2 = None

Energy pulse output

RFT		SE		Action	Size	Type	Units	Description
Address	Register	Address	Register					
0x1968	6505	0x1967	6504	R/WC	2	Float32	-	S0 output rate Default: 1000

Energy settings

RFT		SE		Action	Size	Type	Units	Description
Address	Register	Address	Register					
0x196A	6507	0x1969	6506	R/WC	1	UInt16	-	Combined Code 01 (F) 04 (R) 05 (F+R) (default) 06 (R-F) 09 (F-R) 10 (F-R)

Current, voltage, power, power factor, and frequency

RFT		SE		Action	Size	Type	Units	Description
Address	Register	Address	Register					
Current								
0x0BB8	3001	0x0BB7	3000	R	2	Float32	A	Current
Voltage								
0x0BD4	3029	0x0BD3	3028	R	2	Float32	V	Voltage
Power								
0x0BEE	3055	0x0BED	3054	R	2	Float32	kW	Active power
0x0BFC	3069	0x0BFB	3068	R	2	Float32	kVAR	Reactive power
0x0C04	3077	0x0C03	3076	R	2	Float32	kVA	Apparent power
Power factor								
0x0C0C	3085	0x0C0B	3084	R	2	4Q_FP_PPF	-	Power factor: <ul style="list-style-type: none"> -2 < PF < -1 = Quad 2, active power negative, capacitive -1 < PF < 0 = Quad 3, active power negative, inductive 0 < PF < 1 = Quad 1, active power positive, inductive 1 < PF < 2 = Quad 4, active power positive, capacitive
Frequency								
0x0C26	3111	0x0C25	3110	R	2	Float32	Hz	Frequency <ul style="list-style-type: none"> Range : 40 to 70

Energy and energy by tariff

Energy values - 64-bit integer

RFT		SE		Action	Size	Type	Units	Description
Address	Register	Address	Register					
Total energy (cannot be rest)								
0x0C84	3205	0x0C83	3204	R	4	Int64	Wh	Forward active energy
0x0C88	3209	0x0C87	3208	R	4	Int64	Wh	Reverse active energy
0x0C8C	3213	0x0C8B	3212	R	4	Int64	Wh	Total active energy
0x0C94	3221	0x0C93	3220	R	4	Int64	VARh	Forward reactive energy
0x0C98	3225	0x0C97	3224	R	4	Int64	VARh	Reverse reactive energy

Energy values - 64-bit integer (Continued)

RFT		SE		Action	Size	Type	Units	Description
Address	Register	Address	Register					
0x0C9C	3229	0x0C9B	3228	R	4	Int64	VARh	Total reactive energy
Partial energy								
0x0CB8	3257	0x0CB7	3256	R	4	Int64	Wh	Forward partial active energy
Energy by tariff								
0x105F	4192	0x105E	4191	R/WC	1	UInt16	-	Tariff 01: T1 (default) 02: T2
0x1064	4197	0x1063	4196	R	4	Int64	Wh	T1 Forward active energy
0x1068	4201	0x1067	4200	R	4	Int64	Wh	T2 Forward active energy
0x106C	4205	0x106B	4204	R	4	Int64	Wh	T1 Reverse active energy
0x1070	4209	0x106F	4208	R	4	Int64	Wh	T2 Reverse active energy
0x1074	4213	0x1073	4212	R	4	Int64	Wh	T1 Total active energy
0x1078	4217	0x1077	4216	R	4	Int64	Wh	T2 Total active energy
0x107C	4221	0x107B	4220	R	4	Int64	VARh	T1 Forward reactive energy
0x1080	4225	0x107F	4224	R	4	Int64	VARh	T2 Forward reactive energy
0x1084	4229	0x1083	4228	R	4	Int64	VARh	T1 Reverse reactive energy
0x1088	4233	0x1087	4232	R	4	Int64	VARh	T2 Reverse reactive energy
0x108C	4237	0x108B	4236	R	4	Int64	VARh	T1 Total reactive energy
0x1090	4241	0x108F	4240	R	4	Int64	VARh	T2 Total reactive energy

Energy values - 32-bit floating point

RFT		SE		Action	Size	Type	Units	Description
Address	Register	Address	Register					
Total energy (cannot be rest)								
0xB02C	45101	0xB02B	45100	R	2	Float32	Wh	Forward active energy
0xB02E	45103	0xB02D	45102	R	2	Float32	Wh	Reverse active energy
0xB030	45105	0xB02F	45104	R	2	Float32	VARh	Forward reactive energy
0xB032	45107	0xB031	45106	R	2	Float32	VARh	Reverse reactive energy
0xB038	45113	0xB037	45112	R	2	Float32	Wh	Total active energy
0xB03A	45115	0xB039	45114	R	2	Float32	VARh	Total reactive energy
Partial energy								
0xB034	45109	0xB033	45108	R	2	Float32	Wh	Forward partial active energy
Energy by tariff								
0xB040	45121	0xB03F	45120	R	2	Float32	Wh	T1 Forward active energy
0xB042	45123	0xB041	45122	R	2	Float32	Wh	T2 Forward active energy
0xB044	45125	0xB043	45124	R	2	Float32	Wh	T1 Reverse active energy
0xB046	45127	0xB045	45126	R	2	Float32	Wh	T2 Reverse active energy
0xB048	45129	0xB047	45128	R	2	Float32	Wh	T1 Total active energy
0xB04A	45131	0xB049	45130	R	2	Float32	Wh	T2 Total active energy
0xB04C	45133	0xB04B	45132	R	2	Float32	VARh	T1 Forward reactive energy
0xB04E	45135	0xB04D	45134	R	2	Float32	VARh	T2 Forward reactive energy

Energy values - 32-bit floating point (Continued)

RFT		SE		Action	Size	Type	Units	Description
Address	Register	Address	Register					
0xB050	45137	0xB04F	45136	R	2	Float32	VARh	T1 Reverse reactive energy
0xB052	45139	0xB051	45138	R	2	Float32	VARh	T2 Reverse reactive energy
0xB054	45141	0xB053	45140	R	2	Float32	VARh	T1 Total reactive energy
0xB056	45143	0xB055	45142	R	2	Float32	VARh	T2 Total reactive energy

Diagnostics

RFT		SE		Action	Size	Type	Units	Description
Address	Register	Address	Register					
0x4E23	20004	0x4E22	20003	R	5	Bitmap	-	Err-02 <ul style="list-style-type: none"> • 0 = No error (default) • 3 = Software error • 5 = Memory error

Command list**Tariff**

Command Number	Action (R/W)	Size	Type	Unit	Range	Description
2008	W	1	UInt16	—	—	(Reserved)
	W	1	UInt16	—	1, 2	Tariff: 1 = T1 2 = T2

Pulse output

Command Number	Action (R/W)	Size	Type	Unit	Range	Description
2003	W	1	UInt16	—	—	(Reserved)
	W	2	Float32	kW/pulse	10000, 2000, 1000, 100, 10, 1, 0.1, 0.01	Pulse constant

Reset partial energy counters

Command Number	Action (R/W)	Size	Type	Unit	Range	Description
2020	W	1	UInt16	—	—	(Reserved)

Combined code

Command Number	Action (R/W)	Size	Type	Unit	Range	Description
2958	W	1	UInt16	—	—	(Reserved)

Command Number	Action (R/W)	Size	Type	Unit	Range	Description
	W	1	UInt16	—	01, 04, 05, 06, 09 and 10	Combined code

LCD cycle time

Command Number	Action (R/W)	Size	Type	Unit	Range	Description
4001	W	1	UInt16	—	—	(Reserved)
	W	1	UInt16	—	1 - 30 seconds	LCD cycle time

Communication

Command Number	Action (R/W)	Size	Type	Unit	Range	Description
5000	W	1	UInt16	—	—	(Reserved)
	W	1	UInt16	—	—	(Reserved)
	W	1	UInt16	—	—	(Reserved)
	W	1	UInt16	—	1 – 247	Modbus ID
	W	1	UInt16	—	0 – 5	Baud Rate 0 = 9600 1 = 19200 (default) 2 = 38400 3 = 4800 4 = 2400 5 = 1200
	W	1	UInt16	—	0 – 2	Parity 0 = Even 1 = Odd 2 = None
	W	1	UInt16	—	—	(Reserved)
5100	R	1	UInt16	—	0 – 1	Register Map Selection 0 = rFt 1 = SE

Read device identification

Object ID	Name / Description	Size	Type	Value	Notes
0x00	Vendor name	18	UTF8	Schneider Electric	—
0x01	Product Code	9	UTF8	A9MEM2455	The Product code value is identical to the catalog number of each device
0x02	Firmware revision	4	UTF8	X.Y	Equivalent to register 1638

The read device ID codes 01 and 04 are supported:

- 01 = request to get basic device identification (stream access)
- 04 = request to get one specific identification object (individual access)

Communication via M-Bus (iEM2435)

Overview

M-Bus is a master / slave communication protocol (EN13757-3) where the master initiates transactions and the slave(s) respond with the requested information or action. Data is transferred using hexadecimal telegrams.

The meter can communicate with your PC. In order to read out the meter registers first install and configure the PC software. Use an M-bus level converter to connect the PC and the meter.

The cable should be connected to terminals 10 and 11. The default communication address of the meter is 00.

The default M-Bus communication settings are as follows:

- Baud rate 2400
- 8 data bits
- Even parity
- 1 stop bit

The baud rate can be changed to values 9600, 4800, 1200, 600 and 300 baud. Data, parity and stop bit cannot be changed.

Key terms

Term	Definition
C-Field	The control or function field of the telegram. It provides information about the telegram, such as the direction of data flow (master to slave or slave to master), the status of the data flow and the function of the message.
CI-Field	The control information field of the telegram. It defines the type and sequence of data to be transmitted.
Fixed data header	Contains device and manufacturer identification information.
DIF	Data information field. The DIF contains information about the function of the data (for example, instantaneous versus maximum) and the data format (for example, 16-bit integer).
DIFE	Data information field extension. A DIFE contain additional information about the data, such as tariff and subunit.
Master	A device that issues commands and receives responses from slave devices. There can be only one master per serial network.
Slave	A device that provides information or performs actions in response to requests from the master.
VIF / VIFE	Value information field and value information field extension. The VIF and VIFE contain information about the value (for example, whether it is an energy or power value). The meter uses both primary VIFE (as detailed in the M-Bus protocol documentation) and manufacturer-specific VIFE.

M-Bus protocol support

The meter supports the M-Bus protocol as follows:

- Mode 1 communications (least significant bit first).

- Telegram formats:
 - Single character
 - Short frame
 - Long frame
- Function codes (C-field bits 3-0):
 - SND_NKE: Initiates of communications between the master and slave.
 - SND_UD: The master sends user data to the slave.
 - REQ_UD2: The master requests Class 2 user data from the slave.
 - RSP_UD: The slave sends requested data to the master.
- Secondary addressing in accordance with the M-Bus standard.
- Broadcast telegrams.

M-Bus protocol implementation

M-Bus tool for viewing data and configuring the meter

The M-Bus tool provides a graphical user interface where you can view meter data and configure meter settings. To obtain the tool, go to www.se.com and search for your meter model then select Downloads or contact your local Schneider Electric representative.

Communications indicator

A symbol appears on the display when the meter is communicating. You can use this indicator to assist in communications troubleshooting.

Variable data structure telegram information

Fixed data header

Byte 1 – 4 Identification No.	Byte 5 – 6 Manufacturer	Byte 7 Version	Byte 8 Medium	Byte 9 Access No.	Byte 8 Status	Byte 11 – 12 Signature
Serial number of the meter in an 8-digit, BCD coded format The serial number can also be found on the meter front panel	4CA3 hex = Schneider Electric	Firmware version of the communications board 10 = version 1.0	02 hex (electricity)	Counter of successful access attempts	Indicates M-Bus application errors	Not used

Data record header information

Data formats used by the meter (DIF bits 3 – 0)

NOTE: x in the hex value is determined by bits 7 – 4 of the DIF.

Format	bin	hex
No data	0000	x0
8-bit integer	0001	x1
16-bit integer	0010	x2

Format	bin	hex
24-bit integer	0011	x3
32-bit integer	0100	x4
32-bit real	0101	x5
48-bit integer	0110	x6
64-bit integer	0111	x7
Variable length	1101	xD

Data function types used by the meter (DIF bits 5 - 4)

Function type	bin
Instantaneous	00

Primary VIF used by the meter

NOTE: E denotes the extension bit; x in the hex value is determined by bits 7 – 4 of the VIF.

Primary VIF	bin	hex	Description
Energy	E000 0011	x3	Wh with a resolution of 10 ⁰
Power	E000 1110	xE	kW with a resolution of 10 ³
Bus address	E111 1010	xD	Data type C (unsigned integer), as detailed in the M-Bus protocol documentation
Primary VIFE	1111 1101	FD	Indicates that the first VIFE is a primary VIF extension
Manufacturer-specific VIFE	1111 1111	FF	Indicates that the next VIFE is manufacturer specific

Primary VIFE codes used by the meter

The primary VIFE codes in the table below are used by the meter when the VIF equals FD hex (1111 1101 bin).

NOTE: E denotes the extension bit; x in the hex value is determined by bits 7-4 of the VIFE.

Primary VIFE codes	bin	hex	Additional information
Manufacturer	E000 1010	xA	–
Model	E000 1100	xC	–
Voltage	E100 1001	x9	Volts with a resolution of 10 ⁰
Current	E101 1100	xC	Amps with a resolution of 10 ⁰
Error flag	E001 0111	x7	—

Manufacturer-specific VIFE codes

The manufacturer-specific VIFE codes in the table below are used by the meter when the VIF equals FF hex (1111 1111 bin).

NOTE: E denotes the extension bit; the hex value assumes E = 0.

Description	bin	hex
Export energy value	E000 1001	09
Partial energy value	E000 1101	0D
Current	E000 0000	00

Description	bin	hex
Voltage L-N	E000 0100	04
Power Factor	E000 1010	0A
Frequency	E000 1011	0B
Active tariff	E001 0000	10
Tariff control mode	E001 0001	11
Number of phases	E010 0001	21
Number of wires	E010 0010	22
Power system configuration	E010 0011	23

Telegram information for data records

The following sections outline the telegram information used in data records. The tables contain the following information (if applicable):

- Data format in hex (for example, 16-bit integer)
- Primary VIF in hex
- Primary VIFE codes in bin and hex
- Manufacturer-specific VIFE codes in bin and hex

Meter information

NOTE: E denotes the extension bit; the hex value assumes E = 0.

Data format	Primary VIF Extension		Description
	bin	hex	
0D	E000 1010	0A	Manufacturer "Schneider Electric" in 18-byte ASCII format
0D	E000 1100	0C	Model in ASCII format
03	E0001 0111	17	Meter error codes: 0 = Code 101: error in executable firmware code 1 = Code 102: calibration data is missing or has errors

Energy and energy by tariff measurements

The energy and energy by tariff measurements listed below are preserved through power failures.

NOTE: E denotes the extension bit; the hex value assumes E = 0.

Data format	DIFE	Primary VIF	Primary VIFE		Manufacturer-specific VIFE		Description
			bin	hex	bin	hex	
07	—	03	—	—	—	—	Total active energy import
07	—	83	—	—	E000 1001	09	Total active energy export
87	40	03	—	—	—	—	Total reactive energy import
87	40	83	—	—	E000 1001	09	Total reactive energy export
07	—	83	—	—	E000 1101	0D	Partial active energy import
87	40	83	—	—	E000 1101	0D	Partial reactive energy import
03	—	—	—	—	E001 0000	10	Active tariff

Data format	DIFE	Primary VIF	Primary VIFE		Manufacturer-specific VIFE		Description
			bin	hex	bin	hex	
							1 = rate A (tariff 1) active 2 = rate B (tariff 2) active
87	10	03	—	—	—	—	Rate A (tariff 1) active energy import
87	20	03	—	—	—	—	Rate B (tariff 2) active energy import

Instantaneous measurements

NOTE: E denotes the extension bit; the hex value assumes E = 0.

Data format	DIFE	Primary VIF	Primary VIFE		Manufacturer-specific VIFE		Description
			bin	hex	bin	hex	
05	—	2E	—	—	—	—	Active power
85	40	2E	—	—	—	—	Reactive power
85	80 40	2E	—	—	—	—	Apparent power
05	—	—	E100 1001	C9	E000 0100	04	Voltage L-N
05	—	—	E101 1100	DC	E000 0000	00	Current
05	—	—	—	—	E000 1010	0A	Power factor
05	—	—	—	—	E000 1011	0B	Frequency

Meter status information

Use the following information to read system and status information from the meter. See the section regarding telegram information for meter configuration for more information on writing to the meter.

Power system configuration information

NOTE: E denotes the extension bit; the hex value assumes E = 0.

Data format	Manufacturer specific VIFE		Description
	bin	hex	
03	E010 0011	23	Power system configuration (always 0 = 1PH2W L-N)
03	E010 0010	22	Number of wires (always 2)
03	E010 0001	21	Number of phases (always 1)
03	E010 0100	24	Nominal frequency (always 50)

Telegram information for meter configuration

You can use the information provided in this section to write to the meter using a SND_UD function.

You can also configure the meter using the M-Bus tool available from www.se.com.

Supported VIFE codes for meter configuration

NOTE: E denotes the extension bit; the hex value assumes E = 0.

VIFE code		Action	Description
bin	hex		
E000 0000	00	Write and replace	Replaces the old value with the new value
E000 0111	07	Clear	Resets an accumulated value to 0 (zero)

Example configuration telegram

This example shows the telegram for a command to reset partial energy on a slave with the primary address of 4

hex	Description
68	Start character
07	L-field
07	L-field repetition
68	Start character
53	C-field (control field) SND_UD = Send user data to slave
04	A-field (address field) Slave address of the meter you want to reset
51	CI-field (control information field) Data send to slave
00	Indicates no data is sent (because this is a reset)
FF	VIF indicating the next field is manufacturer specific
8D	Manufacturer-specific VIFE: Reset partial energy
07	Action = Reset
xx	Automatically generated Checksum
16	Stop character

Communications setup

Setting the primary address

SND_UD code	Data format	Primary VIF	Range/Options	Description
00	01	7A	0 – 250	Primary address

Setting the baud rate

To change the baud rate via communications, send a telegram to the meter with the appropriate value in the CI-field:

Baud rate	Hex value for CI-field
300	B8
600	B9
1200	BA
2400	BB

Baud rate	Hex value for CI-field
4800	BC
9600	BD

Resets

NOTE: E denotes the extension bit; the hex value assumes E = 1.

SND_UD code	Data format	Primary VIF		Manufacturer specific VIFE		Description
		bin	hex	bin	hex	
07	00	—	—	E000 1101	8D	Resets partial energy accumulation to 0 (imported / exported active and reactive energy)

M-Bus tool for data display and meter configuration

The M-Bus tool provides a graphical user interface where you can view meter data and configure meter settings. To obtain the tool, go to www.se.com and search for your meter model then select Downloads or contact your local Schneider Electric representative.

If you access a different meter without closing and re-opening the M-Bus tool, the fields displayed in the tool may not match the device you are accessing. The M-Bus tool may indicate a setting was changed without the setting on the meter actually changing.

NOTICE

INACCURATE DEVICE SETTINGS

Do not rely on the configuration information displayed in the M-Bus tool to determine if the associated device is correctly configured.

Failure to follow these instructions can result in inaccurate device settings and data results.

Installing the M-Bus tool

Before you install the tool, you need to download it from www.se.com or obtain it from your sales representative.

1. Navigate to the location where you saved the installation files.
2. Double-click setup.exe. A welcome screen appears. Click **Next**.
3. Confirm the installation location for the tool. Click **Browse** if you want to select a different location. Click **Next**. A confirmation screen appears.
4. Click **Next** to begin the installation. A screen appears when the installation is complete.
5. Click **Close**.

Accessing the meter using the tool

Before you access the meter using the M-Bus tool, make sure that you:

- Connect the meter to a level converter (for a direct serial connection) or a level converter and gateway (for connection via a serial or Ethernet network).
- Set the address of the device to a value other than 0 (zero) using the HMI.

- Install the M-Bus tool on your computer.
- 1. Select **Start > Programs > Schneider Electric > Mbus config tool** (or navigate to the location where you installed the program) and click **Mbus config tool** to open the tool. The login screen appears.
- 2. Select the port on your computer that you are using to connect to the meter and select the baud rate that matches the meter's configuration.
- 3. Click **Test Com** to open the communications port.
- 4. Type the device address in the **Address** field.
- 5. Select the communications mode that you want the tool to start in:
 - **Monitor(Automatic)**: The tool automatically sends read requests to and receives data from the meter. You can set the interval at which these read requests are sent.
 - **Monitor(Manual)**: You must manually send a read request to get data from the meter.
 - **Config**: The tool opens in configuration mode.

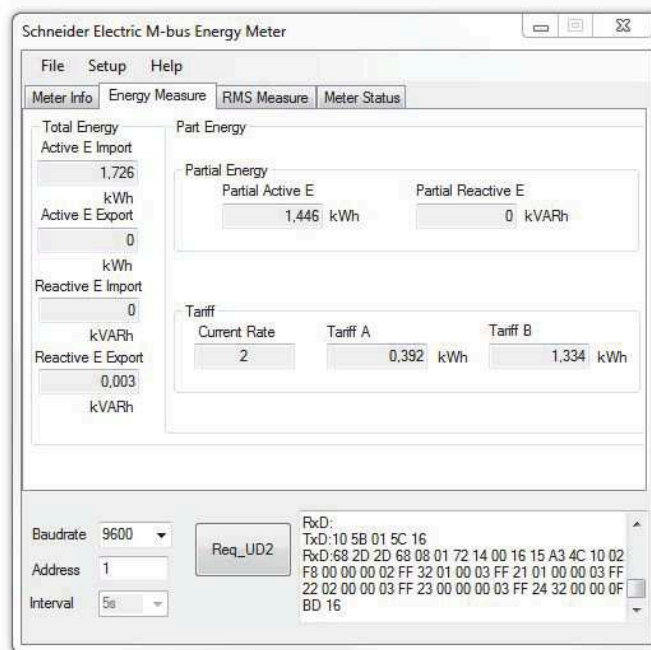
You can change the mode from within the tool, if needed.
- 6. Click **OK** to start the M-Bus tool and access the meter.

Viewing meter data using the M-Bus tool

You can use two modes to view data from the device: automatic or manual.

- Automatic mode: Select the update interval from the **Interval** drop-down list.
- Manual mode: Select **Req_UD2** to request data from the meter.

To switch modes, select **Setup > Monitor** then select the mode you want to use.



The tool has the following tabs for viewing meter information:

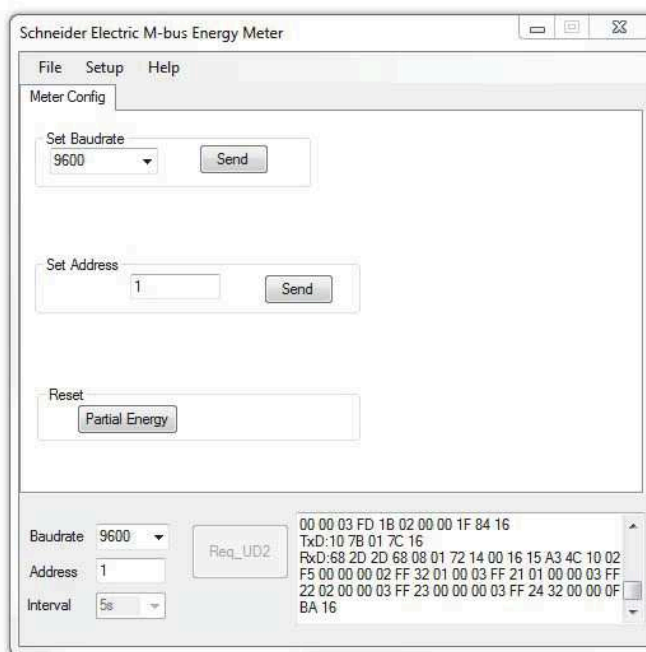
Tab name	Description
Meter Info	This tab provides basic information about the meter (for example, model and serial number) and any active error codes. Click Clear to remove the error codes from the display. This does not resolve the errors.
Energy Measure	tab provides total and partial energy and energy by tariff information.

Tab name	Description
RMS Measure	This tab provides power, current, and voltage values as well as frequency and power factor information.
Meter Status	This tab provides information on the status of the tariff inputs and existing power system settings.

Configuring the meter using the M-Bus tool

You can use the M-Bus tool to configure basic meter settings.

1. Select **Setup > Config** to switch to configuration mode.



2. Set the values that you want to change, then click **Send** for that value or section.

Some values may be unavailable based on existing settings.

The configuration screen has the following sections:

Section	Description
Set Baudrate	Set the baud rate.
Set Address	Set the meter address.
Reset	Reset partial energy and input metering accumulations.

Specifications

The specifications contained in this section are subject to change without notice.

Mechanical characteristics

IP degree of protection (IEC 60529-1)	Front display: IP51
Mounting position	Vertical
Display type	Blue backlight with 7-digit LCD
Keypad	Down-arrow and up-arrow buttons
Front panel LED indicators	Reactive energy consumption LED (A=10000 imp/kVARh) Active energy consumption LED (B=10000 imp/kWh)
Dimensions W x H x D	35.8 x 96.7 x 63 mm (1.41 x 3.81 x 2.48 in)

Electrical characteristics

Measurement accuracy

Measurement type	Class of accuracy as per standard	% Error of reading
Active energy	Class B as per EN 50470-1/3 Class 1 as per IEC 62053-21	±1%
Reactive energy	Class 2 as per IEC 62053-23	±2%
Active power	–	±1%
Apparent power	–	±1%
Reactive power	–	±2%
Current	–	±0.5%
Voltage	–	±0.5%
Frequency	–	±0.05%
Power factor	–	±0.01 count

Voltage inputs

Nominal voltage (U)	230 V L-N AC
Operational voltage	195 to 253 V L-N AC
Insulation capabilities	AC voltage withstand: 4 kV for 1 minute Impulse voltage withstand: 6 kV for 1.2 μS waveform (UC2, IEC 62052-31)
Operational frequency	50/60 Hz ± 10%

Current inputs

Basic current (I_b)	5 A
Maximum rated current (I_{max})	100 A
Operational current	$0.4\%I_b - I_{max}$
Over current withstand	$30 I_{max}$ for 0.01 s
Operational frequency	50/60 Hz ± 10%

Power consumption

Internal power consumption	≤ 1 W/Phase - ≤ 10 VA/Phase
----------------------------	---------------------------------------

Pulse characteristics

Pulse output rate	10000 / 2000 / 1000 / 100 / 10 / 1 / 0.1 / 0.01 imp/kWh
Pulse width	1000 / 100 / 10 / 1 / 0.1 / 0.01 imp/kWh: 31 ms 2000 imp/kWh < 30 kW: 31 ms 2000 imp/kWh > 30 kW: 15 ms 10000 imp/kWh < 6 kW: 31 ms 10000 imp/kWh > 6 kW: 15 ms 10000 imp/kWh > 12 kW: 5 ms

Environmental characteristics

Operating temperature	-40 °C to +70 °C (-40 °F to +158 °F)
Storage temperature	-40 °C to +80 °C (-40 °F to +176 °F)
Operating humidity	$\leq 75\%$
Storage humidity	$\leq 95\%$
Altitude	≤ 2000 m (6561 ft) above sea level
Electromagnetic environmental class	E2
Mechanical environmental class	M1
Mounting location	For indoor use only

Safety

Insulated encased meter of protective class II
Double insulation

Basic errors

$0.05I_b$	$\text{Cos}\varphi = 1 \pm 1.5\%$
$0.1I_b$	$\text{Cos}\varphi = 0.5\text{Lag} \pm 1.5\%$ $\text{Cos}\varphi = 0.8\text{Lead} \pm 1.5\%$
$0.1I_b - I_{\max}$	$\text{Cos}\varphi = 1 \pm 1\%$
$0.2I_b - I_{\max}$	$\text{Cos}\varphi = 0.5\text{Lag} \pm 1\%$ $\text{Cos}\varphi = 0.8\text{Lead} \pm 1\%$

M-Bus communication (iEM2435 only)

Bus type	M-bus
Baud rate	300, 600, 1200, 2400 (default), 4800 and 9600
Address range	0 – 250 user configurable
Range	≤1000 m
Protocol	EN13757-3
Unit loads	±2
Maximum number of meters	64 ⁽¹⁾

RS-485 Modbus communication (iEM2455 only)

Bus type	RS-485
Protocol	Modbus RTU with 16 bit CRC
Baud rate	1200, 2400, 4800, 9600, 19200 (default) and 38400
Address range	1 – 247 user configurable
Maximum bus load	60 meters per bus
Range	1000 m

Data storage

Backup period	The data can be stored for more than 10 years without power.
---------------	--

(1) The maximum number of meters is dependent on the converter, baud rate (the higher the baud rate, less number of meters which can be used) and the circumstances under which the meters are installed.

Schneider Electric
35 rue Joseph Monier
92500 Rueil Malmaison
France

+ 33 (0) 1 41 29 70 00

www.se.com

As standards, specifications, and design change from time to time, please ask for confirmation of the information given in this publication.

© 2026 – Schneider Electric. All rights reserved.

7EN02-0468-02