

Clipsal FireTek[®] Smoke Alarms

Flush-Mount Smoke Detector
Design simplicity, superior performance.



clipsal.com/smokealarms

Iconic and Clipsal Iconic are trademarks of Schneider Electric (Australia) PTY Limited.

Life Is On

CLIPSAL
by Schneider Electric

Safety and reliability you can depend on.

Ultimate Style and Quality

- Sleek, low-profile and modern design – provides a stylish and unobtrusive smoke detector that blends into ceiling.
- The same size as a low voltage downlight fitting – and 60% smaller than the average smoke detector.
- Designed to complement existing interior décor.
- Offers maximum protection against smoke and fire danger without compromising on style.



Same size as a low-voltage downlight fitting.

Easily installed into any ceiling

- Recessed mounting base provides a fixed connection point for wiring.
- Large in-line terminals accommodate up to three 2.5mm² cables per terminal.
- Combination Phillips/slotted heads on all terminals and clamping screws.
- Ceiling hole cut-out sized to suit standard 3½" hole saw (90mm).
- Large flange on the base hides ragged edges of cut-out hole in the ceiling.
- Ceiling clamps attach base securely over a wide range of ceiling board thicknesses; from 8mm to 40mm.
- Hinged terminal cover pivots out of the way while fitting-off, allowing clear access to terminals when holding the unit with one hand.
- Terminal cover incorporates three cable entry options for a single TPS cable, as well as additional break-outs for multiple power and interconnect cables.
- Base incorporates quick-fit contacts automatically providing power to detector module.
- 755PFM4 is compatible with 755FM and 755PFM mounting bases.

Insect barrier and enclosed base, to prevent dust and bugs from the ceiling entering the detector module and creating nuisance tripping

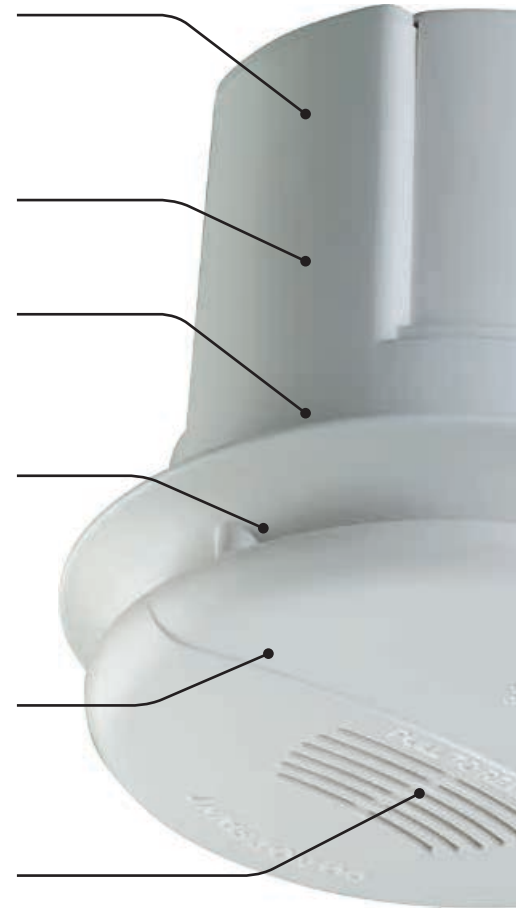
Easy installation

Interconnectable (up to 40 units)

Super low-profile, fully recessed design

Robust design for superior performance and resilience

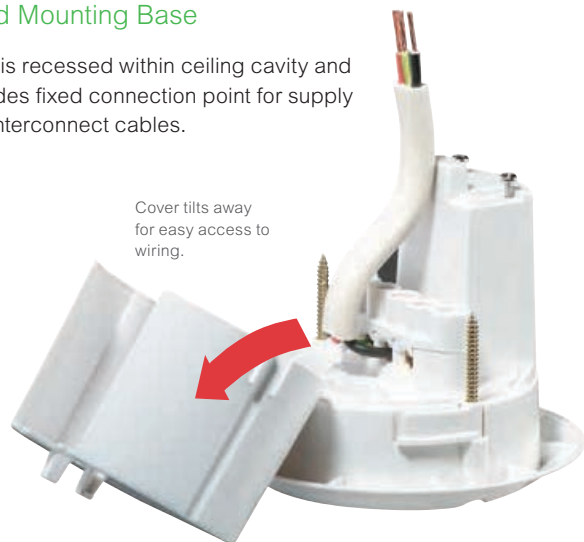
Loud alarm indication: 85dB at 3 metres

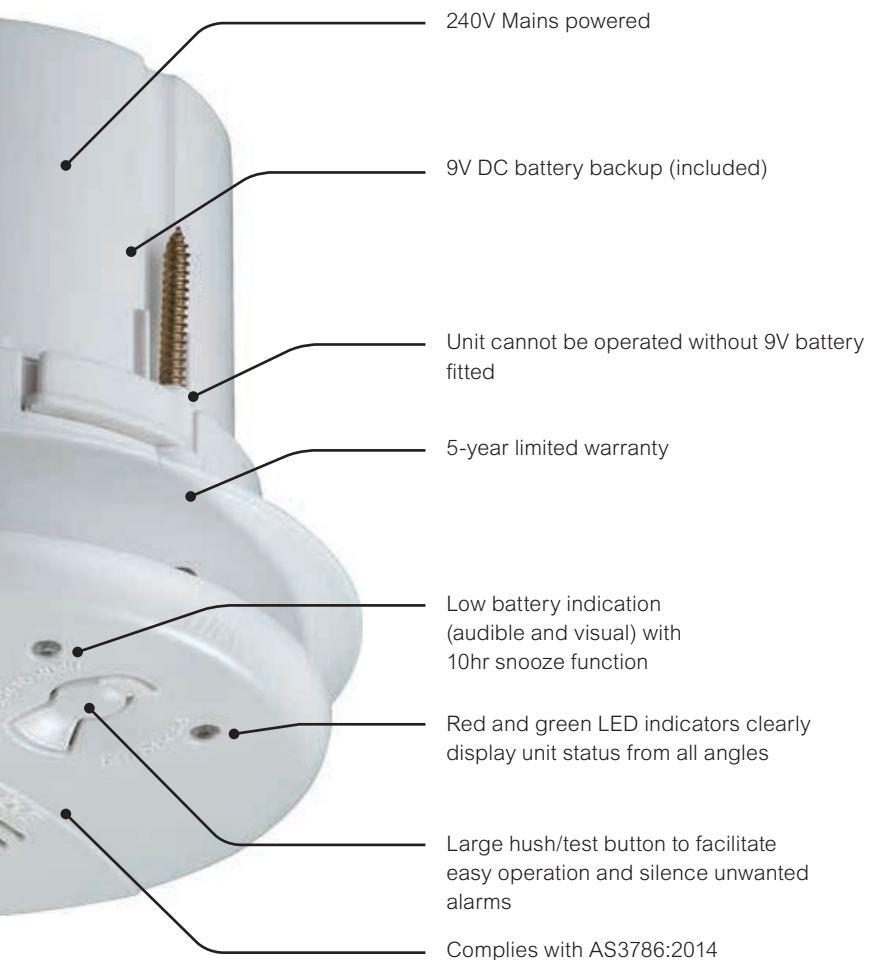


Fixed Mounting Base

Base is recessed within ceiling cavity and provides fixed connection point for supply and interconnect cables.

Cover tilts away for easy access to wiring.





Features and Benefits

- Super low-profile, fully recessed design.
- Photoelectric technology for faster response to smouldering fires.
- 240V Mains powered with 9V DC battery backup (included)
- Quick fit-off/easy installation.
- Robust design for superior performance and resilience
- Simple wiring with large terminals and ample wiring space.
- Interconnectable (up to 40 units).
- Low battery indication (audible and visual) with 10hr snooze function.
- Easy to use large test/hush button.
- Compatible with 755FM and 755PFM mounting bases.
- Optical chamber with Stainless steel insect screen to prevent insect ingress.
- Dust cover to prevent contamination during installation.
- Complies with AS3786:2014.
- ActivFire listed and SAI Global 5 Ticks certified product.
- 5-year limited warranty.

Removable Detector Module



Designed for easy replacement of the batteries

- Removable detector module snaps into recessed base.
- Simple "pull-to-remove" operation.
- Access and replacement of battery is simple and safe, and can be performed by an unskilled person without risk of electric shock. Simply pull detector module out from base to access battery compartment.
- Interlock mechanism prevents detector module from being secured to base without a battery fitted.

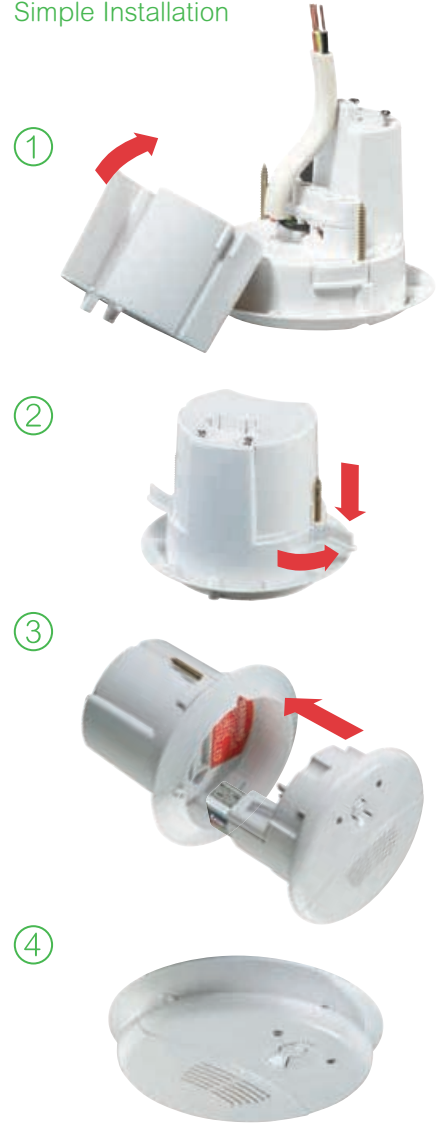
Technical specifications

Specification	Description
Primary Power Supply	220-240V AC 50Hz
Secondary Power Supply	9V DC alkaline battery backup
Operating Current	40mA (<1mW standby power)
Detector Type	Photoelectric chamber Unit contains no radioactive material
Horn Level	85dB at 3 metres minimum
Visual Indicators	Green LED for mains power ON Red LED for warning and low battery indication
Low Battery Alarm	Yes, audible and visual alert with 10hr snooze function
Hush Mode	Yes. Silences unwanted alarms, 10 minutes
Interconnect Facility	Yes. 40 alarms over 150 metres maximum
Sensing Chamber	Optical sensing chamber with 0.8mm stainless steel mesh
Overall Dimensions	ø108 x 102mm
– Visible	23mm
– Recessed	79mm
Mounting Hole Size	ø90mm cut-out (suits 3.5" holesaw)
Ceiling Clamp Range	9mm to 40mm
Terminal Provisions	4 x ø5.0mm screw terminals Active, neutral, earth/loop and interconnect
Cable Range	1.0mm ² to 2.5mm ² , with up to 3 conductors per terminal – allows daisy chaining
Approvals	ActivFire certified RCM, SAI Global 5 Ticks
Complies With	AS3786:2014, AS/NZS60065:2012 & AS/NZS60950-1

Order Numbering

Model	Description
755PFM4	Photoelectric Flush mount smoke alarm, 240V Mains powered, 9V DC battery backup, Gen 4.

Simple Installation





Fifty cents from the sale of every Clipsal Firetek smoke alarm is contributed to the Julian Burton Burns Trust, to support their work of alleviating the pain and suffering of burns patients across Australia.

Julian Burton
BurnsTrustTM

For more information on Clipsal Fire Tek Smoke Alarms, contact your local Clipsal and Schneider Electric Partner Business Representative, electrical wholesaler or visit clipsal.com/smokealarms



33-37 Port Wakefield Road
Gepps Cross, South Australia 5094
PO Box 132, Enfield Plaza
South Australia 5085
schneider-electric.com.au

National Customer Care
Enquiries: 1300 2025 25
Email: plugin@clipsal.com.au
Access this document directly:
clipsal.com/brochures