

USER MANUAL

Remote Control for 752DALIRC sensor

Art. no.
752RC/DALI



NVE51512-00 07/2016

TECHNICAL SPECIFICATIONS

- Rated Voltage: 3V DC (CR2032 battery)
- Transmission Range: Approx. 10m

1 PACKAGE CONTENTS

Drawing					
Item	IR remote controller	Bracket	Wood screw Φ4 x 25.4mm	Double-sided adhesive tape	User manual
Quantity	1	1	2	1	1

2 FEATURES

- You no longer need to climb ladders, the Presence DALI Sensor can be programmed easily and safely with this Remote Control.
- By pressing “” button the ambient light level can be recorded into the sensor as the threshold for switching on/off the sensor’s load. (Refer to function of “” button)
- A battery is included, please remove the Insulation sheet before use. The Key chain hole is designed for easy carrying. (See FIG.1).

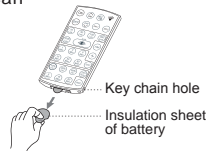


FIG.1

3 INSTALLATION

⚠ WARNING

RISK OF SUFFOCATION

- Swallowing small parts can be deadly for young children.
- Keep coin-sized button batteries and devices out of sight and out of reach.
 - Examine devices and make sure the battery compartment is secure.
 - Dispose of used button batteries immediately according to local disposal guidelines. Flat batteries can still be dangerous.

Failure to follow these instructions can result in death or serious injury.

3.1 Battery Installation and replacement

Keep the locking mechanism pressed down and pull out the battery holder, and insert a new battery (model CR2032 3V). Please make sure the battery is connected to the correct polarities, then push the battery holder back. (See FIG.2)

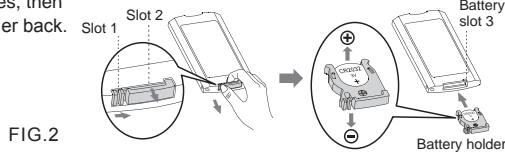


FIG.2

3.2 Wall bracket installation

3.2.1 Fix the wall bracket on the wall by attached wood screw (See FIG.3-A), then slide 752RC/DALI into it (See FIG.3-B).

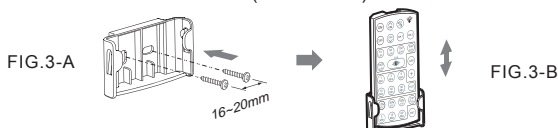


FIG.3-A

FIG.3-B

3.2.2 Stick the wall bracket on the wall by attached double-sided adhesive tape (See FIG.4-A), then slide 752RC/DALI into it (See FIG.4-B).

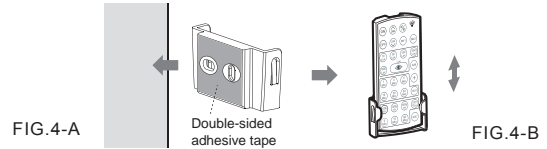


FIG.4-A

FIG.4-B

4 PUSH BUTTON FUNCTION

HINT

- Each operation on button can transmit signal for maximum 1sec. No signal will be transmitted if two or more buttons are operated simultaneously.
- Presence detector confirms the signal reception by LED flashing for 2sec.
- All the settings for II (CH2) are invalid while detector has only one load (channel).

Button	Function
	To set load on for 8hrs <ul style="list-style-type: none"> ● By pressing “” button, the load of detector will be turned on for 8hrs. Load will be turned off after 8hrs and return to auto mode. ● Or press “” button again to exit this “8hrs on mode” during this period, detector will return to auto mode. Or switching off power supply of presence detector for 5sec and re-supply it again to lead detector to auto mode. Load can be led to off mode by pressing “” button under on mode. ● Pressing “” is inactive under lock mode. Under unlocked status, by pressing “” or “” button firstly to select desired channel for value setting, then press “” button to switch load on for 8hrs. If press “” button directly without selecting channel, both DA1 and DA2 will keep on 8hrs simultaneously.
	To set load off for 8hrs <ul style="list-style-type: none"> ● By pressing “” button, the load connected to detector will be turned off for 8hrs. ● Detector will return to auto mode after 8hrs. Or press “” button again to exit this “8hrs off mode” during this period, detector will return to auto mode. Or switching off power supply of presence detector for 5sec and re-supply it again to lead detector to auto mode. ● Load can be led to on mode by pressing “” button under off mode. ● Pressing “” is inactive under lock mode. ● Under unlocked status, by pressing “” or “” button firstly to select desired channel for value setting, then press “” button to switch load off for 8hrs. If press “” button directly without selecting channel, both DA1 and DA2 will turn off for 8hrs simultaneously.
	To lock/unlock 752RC/DALI buttons <ul style="list-style-type: none"> ● Detector load on (except 8hrs on mode) : By pressing “” button, if load switches off and detector’s LED flashes quickly for 5sec, meaning the detector is unlocked and enters into IR setting mode. If load keeps on and detector’s LED keeps on 5sec, detector is locked and no adjustments of IR are workable. ● Detector load off (except 8hrs off mode) : By pressing “” button, if load switches on / off sequentially and detector’s LED flashes quickly for 5sec, meaning the detector is unlocked and enters into IR setting mode. If load keeps off and detector’s LED keeps on for 5sec, then the detector is locked. ● Detector will be locked automatically when power is re-supplied after power went off. ● When all IR settings were finished without pressing “” button, the detector will be locked automatically after 2min if no buttons were pressed. ● Under locked status, no buttons are workable (except “” & “” & “” & “” buttons).
	Test mode <ul style="list-style-type: none"> ● By pressing “” button to enter into Test mode, it is confirmed by detector’s LED flashing for 2sec. Walking through the detection coverage, both load and detector’s LED turn on 2sec once detector is triggered (Reaction is regardless of Lux value).
 	To dim the brightness of light <ul style="list-style-type: none"> ● 752RC/DALI is locked: Press “” or “” button to start dimming, then pressing “” or “” button to stop dimming while the ambient light level matches user’s desire, but the value will not be saved in detector, and it will be dimmed automatically according to last Lux setting value while the light is switched on next time. ● 752RC/DALI is unlocked: Press “” or “” button to start dimming, then pressing “” or “” button to stop dimming while the ambient light level matches user’s desire and the value will be saved in detector for pre-set Lux value, and it will be dimmed to this light level automatically while the lighting is switched on next time. ● Under unlocked status, by pressing “” or “” button firstly to select desired channel for value setting, then press “” or “” to dim the light. If press “” or “” button directly without selecting one channel, both DA1 and DA2 can dim the light simultaneously. ● Remark: “” is to increase the brightness of light. “” is to decrease the brightness of light.

Button	Function
	<p>Ex-changing auto mode and semi auto mode</p> <ul style="list-style-type: none"> Under unlocked status, by pressing “” or “” firstly to select desired channel for value setting, then press “” to select auto or semi-auto mode. If press “” button directly without selecting one channel, both DA1 and DA2 can select auto or semi-auto mode simultaneously. The first time pressing the “” button, LED will flash quickly for 2 sec. to indicate detector entering into Auto mode. Press “” button one more time, LED will keep on 2 sec. to indicate detector entering into Semi-auto mode.
	<p>To reset settings on presence detector</p> <p>By pressing “” button aiming to the detector, all settings on presence detector will go back to potentiometers' settings</p>
 ↓ 	<p>To adjust Lux value</p> <ul style="list-style-type: none"> Under unlock mode, press “” or “” firstly to select desired channel for value setting. Then, press corresponding button to set light level threshold for presence detector to switch on the connected load. User can set the desired Lux value through pressing “” button.
	<p>To read-in the actual ambient light level</p> <ul style="list-style-type: none"> Actual ambient light level can be read-in as threshold for switching the connected load, if the provided Lux values do not match user's requirement. The steps are as below: Press “” button till detector's red LED flashing to enter into learning mode, learning time is 10sec. Then the actual ambient light level is read-in confirmed by both load and LED turn on for 5sec to indicate 752RC/DALI learning successfully and then turn off. Afterwards, it returns to Auto mode. <p>Note: If the ambient light level is out of the range of 10 - 2000Lux, detector will learn for 10sec, then LED flashes quickly for 5sec, and the alternative of 10Lux or 2000Lux value will be stored depending on under 10Lux or above 2000Lux value.</p> <ul style="list-style-type: none"> “” is only valid for DA1 setting.
 	<p>DA1 or DA2 setting selection</p> <ul style="list-style-type: none"> By pressing “” under unlock mode to select DA1 for corresponding value setting. By pressing “” under unlock mode to select DA2 for corresponding value setting. The settings for “” is invalid while detector has only one channel.
 ↓ 	<p>Set delay off time of DA1 / DA2</p> <p>Under unlock mode, press “” or “” firstly to select desired channel for value setting. Then, press corresponding button to set the delay off time of DA1 or DA2.</p> <p>User can set the desired delay off time of DA1 or DA2 through pressing “” button.</p>
	<ul style="list-style-type: none"> Under unlocked status, by pressing “” button to sum the same kind value, one time only during each setting period. Take setting Lux value for example, press “” + “” + “”, the final value is 60Lux. “” is only valid for setting value of Lux / Time / STBY / STBY%. “” is invalid without pressing any values of Lux / Time / STBY / STBY% first.
 	<p>Set load on time in standby mode</p> <ul style="list-style-type: none"> Under unlock mode, press “” or “” firstly to select desired channel for value setting. Then, press corresponding button to set the desired load on time of DA1 or DA2. User can set the desired load on time of DA1 or DA2 through pressing “” button.
	<p>Switch off load in standby mode</p> <ul style="list-style-type: none"> Under unlock status, By pressing “” firstly, detector enters into standby on mode, with detector's LED flashing quickly for 2sec and load on. Then, press it again, detector enters into standby off mode, with detector's LED keeps on for 2sec. Under standby on mode, load will keep on with standby illumination (according to STBY% setting) when detector's delay time has expired. Under standby off mode, load will switch off when detector's delay time has expired. Under unlocked status, by pressing “” or “” button firstly to select desired channel for value setting, then press “” to select standby on or off mode. If press “” button directly without selecting channel, both DA1 and DA2 are set simultaneously.

Button	Function
 	<p>Set illumination of load in standby mode</p> <ul style="list-style-type: none"> Under unlock mode, press “” or “” firstly to select desired channel for value setting. Then, press corresponding button to set the desired load on illumination for standby mode of DA1 or DA2. User can set the desired load on illumination for standby mode of DA1 or DA2 through pressing “” button.

5 TROUBLE SHOOTING

When remote controller 752RC/DALI works abnormally, please check assumptive problems and suggested solutions in following chart that hopefully solve your problem.

Problem	Possible cause	Suggested solution
Detector fails to receive signal	<ol style="list-style-type: none"> Exceed the transmission range Low battery power Detector works abnormally. 	<ol style="list-style-type: none"> Operate within transmission range (<10m), and ensure 752RC/DALI aiming directly to the detector. Replace a new battery. Check the trouble of detector, then refer the TROUBLE SHOOTING of detector manual for repairing.
No signal	<ol style="list-style-type: none"> Low battery power. Press two or more buttons once. The battery insulation sheet is not took out. 	<ol style="list-style-type: none"> Replace a new battery. Press one button once. Take out the battery insulation sheet.
Fail to transmit signal	In locked mode.	Unlock 752RC/DALI

6 Warranty Statement

Schneider Electric (Australia) Pty Ltd, (Clipsal by Schneider Electric), warrants this product to be free from defects in materials and workmanship for a period of three years from the date of installation. The benefits conferred herein are in addition to any other rights and remedies you may have at law in respect to this product. Australian and New Zealand customers please see the notes below.

Australia: Australian Consumer Law specifies that our goods come with guarantees that cannot be excluded. You are entitled to a replacement or refund for a major failure and compensation for any other reasonably foreseeable loss or damage. You are also entitled to have the goods repaired or replaced if the goods fail to be of acceptable quality and the failure does not amount to a major failure.

New Zealand: This guarantee is in addition to and does not affect your rights under applicable law, except where that law expressly provides otherwise. The Consumer Guarantee Act 1993 (NZ) will not apply if this product is purchased for the purpose of business.

This warranty is expressly subject to the Schneider Electric product being installed, wired, tested, operated and used in accordance with our instructions and specifications. Any alterations or modifications made to the product without our permission will void the warranty. Schneider Electric will at its option repair, replace or refund any defective product. The cost of replacement or repair of a defective product is limited to the price of the product only. Schneider Electric will not be responsible for the cost of retrieving, removing, reinstalling, transporting (including return of the defective product to us) or re-testing a product.

How to make a claim: Contact your electrical wholesaler or local supplier of Schneider Electric, PDL or Clipsal branded products and provide the details of the date of purchase, description of load or connections and the circumstances of the failure. Please provide adequate particulars of the defect within 28 days of the fault occurring.

Australia
Schneider Electric (Australia) Pty Ltd
 Customer Care Australia: 1300 369 233
 Email: customercare.au@schneider-electric.com
 www.schneider-electric.com.au

New Zealand
Schneider Electric (NZ) Ltd
 38 Business Parade South, Highbrook,
 East Tamaki, Manukau 2013
 P.O. Box 259370 Botany, Manukau 2163
 Tel. +64 9-829 0490, Fax +64 9-829 0491
 After hours service hotline:
 0800 735 4357 (New Zealand only)
 Customer Care: 0800 652 999
 Email: sales@nz.schneider-electric.com
 www.schneider-electric.com



Technical and Sales Support

For assistance with technical problems, contact your nearest Schneider Electric sales representative.

Schneider Electric reserves the right to change specifications, modify designs and discontinue items without incurring obligation and whilst every effort is made to ensure that descriptions, specifications and other information in this catalogue are correct, no warranty is given in respect thereof and the company shall not be liable for any error therein.

© Schneider Electric 2016

This material is copyright under Australian and international laws. Except as permitted under the relevant law, no part of this work may be reproduced by any process without the prior written permission of and acknowledgment of Schneider Electric