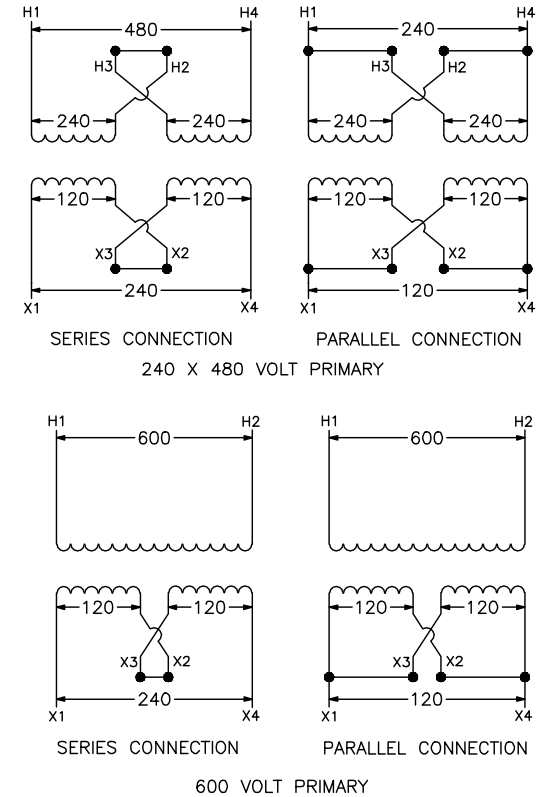


SEISMIC QUALIFICATION:
 TO BE COMPLIANT WITH THE SEISMIC REQUIREMENTS OF ASCE/SEI7, THIS UNIT HAS BEEN QUALIFIED BY SHAKE TABLE TESTING THROUGH SELF CERTIFICATION TO ICC ES AC156. THE ENCLOSURE SHOWN ABOVE IS 2A. CONTACT YOUR LOCAL SCHNEIDER ELECTRIC/SQUARE D REPRESENTATIVE FOR RELATED QUESTIONS.

NOTES:
 UL/CUL LISTED
 NEMA 3R NON-VENTILATED ENCLOSURE
 COPPER WOUND
 105°C INSULATION SYSTEM FOR 55°C RISE
 EPOXY-RESIN ENCAPSULATED

GENERAL-PURPOSE TRANSFORMER
 .100 KVA 1Ø 60HZ
 120/240V SECONDARY



DUAL DIMENSIONS: INCHES
 MILLIMETERS

KVA	CATALOG NUMBERS		TEMP. RISE	SOUND LEVEL	WGT LBS
	240 X 480 PRIMARY	600 PRIMARY			
.100	100SV1A	100SV51A	55°C	40 DB	4.5

GENERAL-PURPOSE TRANSFORMER .100 KVA 1PH 60HZ 120/240 SECONDARY	 Schneider Electric
DWG# 3574 No.	