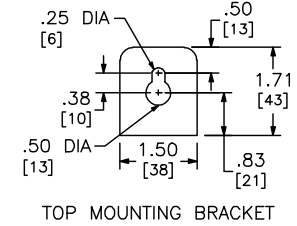


STANDARD BRANCH UNIT SUPPLIED WITH HORIZONTAL CROSS BUS RATED 800A CONTINUOUS (WITH ALUMINUM BUSSING).

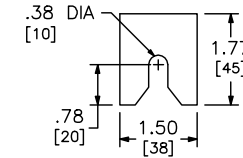
OPTIONAL BRANCH UNIT WITH SUFFIX "X" SUPPLIED WITH HORIZONTAL CROSS BUS RATED 1200A CONTINUOUS (WITH ALUMINUM BUSSING).

OPTIONAL BRANCH UNIT WITH SUFFIX "CUX" SUPPLIED WITH HORIZONTAL CROSS BUS RATED 1200A CONTINUOUS (WITH COPPER BUSSING).

KNOCKOUTS		
SYMBOL	CONDUIT SIZE	
	IN	MM
A	.50	13
B	.75	19
C	1.00	25
D	1.25	32
E	1.50	38



TOP MOUNTING BRACKET



BOTTOM MOUNTING BRACKET

DUAL DIMENSIONS: INCHES
MILLIMETERS

NOTES:
FINISH - GRAY BAKED ENAMEL POWDER COAT PAINT OVER CLEANED GALVANNEALED STEEL.
UL LISTED AS A MODULAR-PANELBOARD - FILE E131840, VOL. M SUITABLE FOR USE AS SERVICE EQUIPMENT.
UNMETERED COMPARTMENTS ARE SEALABLE BY UTILITY.
SEE MARKINGS ON TENANT CIRCUIT BREAKER FOR WIRE RANGES.
GANGABLE MULTI-METERING EQUIPMENT IS DESIGNED FOR WALL MOUNTING ONLY (NOT SUITABLE FOR USE AS FLOOR STANDING EQUIPMENT).

SYSTEM TYPE (IN)	SERVICE PROVIDED (OUT)	CATALOG NUMBER	METER SOCKET TYPE	NUMBER OF POSITIONS	TENANT CIRCUIT BREAKER (ORDER SEPARATELY)	LOAD NEUTRAL WIRE RANGE	EQUIPMENT GROUND WIRE RANGE
1Ø 3W 120/240VAC	1Ø 3W 120/240VAC	EZMR115125 EZMR115125X EZMR115125CUX	5-JAW RINGLESS TYPE WITHOUT BYPASS	5	Q0,Q0-VH,OR QOH 125A MAX 2-POLE	(5) #14-2/0 AWG CU (5) #12-2/0 AWG AL	(5) #14-2/0 AWG CU (5) #12-2/0 AWG AL
		EZMH115125 EZMH115125X EZMH115125CUX	5-JAW RINGLESS TYPE WITH HORN BYPASS				

EZ METER-PAK GANGABLE
MULTI-METERING EQUIPMENT
125A MAX 1PH 3W METER SOCKET/CIRCUIT BREAKER
5-GANG BRANCH UNITS
RAINFOOF NEMA TYPE 3R ENCLOSURES



DWG# 3403
NO.