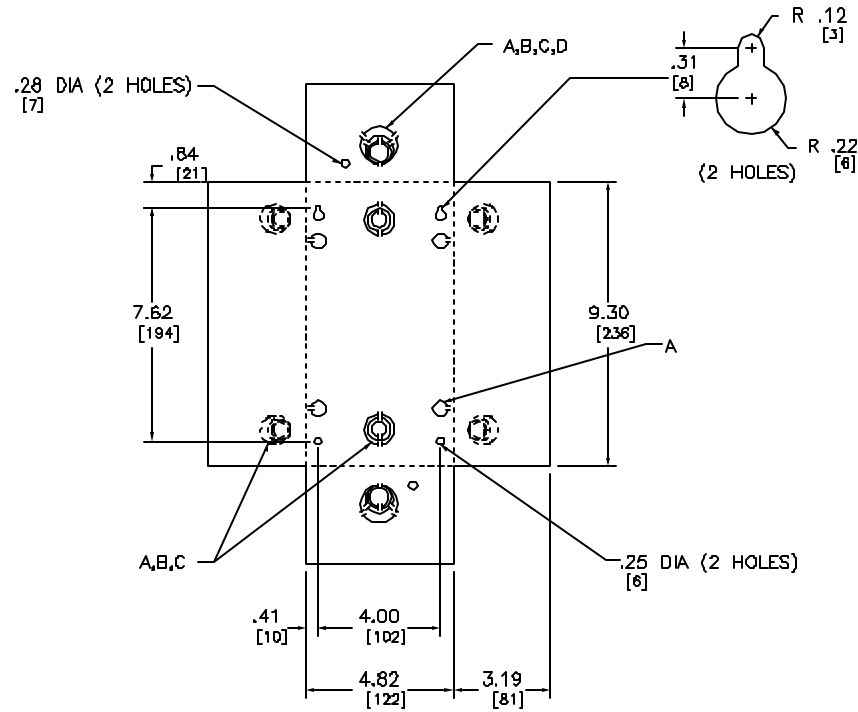



KNOCKOUTS				
SYMBOL	A	B	C	D
N	.50	.75	1.00	1.25
MM	13	19	25	32



DUAL DIMENSIONS: INCHES
MILLIMETERS

SERVICE	AMPERE RATING	GENERAL PURPOSE NEMA TYPE 1	MOLDED CASE SWITCH		TERMINAL LUG WIRE SIZE AWG
			CATALOG NUMBER	TERMINAL LUG WIRE SIZE AWG AL/CU	GROUNDING TERMINALS
 240VAC	80A MOLDED CASE SWITCH	QO2BONATS	QD2D0 (INCLUDED)	#14-4	#4-#8 AL/CU

NOTES:
FINISH - GRAY BAKED ENAMEL ELECTRODEPOSITED OVER CLEANED PHOSPHATIZED STEEL.
UL LISTED - FILE E-58921
▲ LOAD TERMINALS - USE #8 MAX.
◆ MAXIMUM 10 HP, 240VAC
● NOT SUITABLE FOR SERVICE EQUIPMENT.

QO LOAD CENTERS
GENERAL PURPOSE ENCLOSURE
ENCLOSED MOLDED CASE SWITCH DEVICES

 **SQUARE D COMPANY**

DWG# 3289
NO.