

Power Quality Advisor

Improve your power quality for greater plant reliability and efficiency

The Power Quality Advisor Module helps you understand and reduce the impact of power quality on your business, identify power quality status and leverage power quality asset management.

Simple identification of power quality status

- Quickly see your facility's power quality status in a single dashboard
- Simply identify the rating of your facility's electrical health with the main contributors
- Easy-to-identify color code indicators to help you to quickly focus on the most urgent issues
- Get the first level of root cause analysis within three clicks

Protect your assets

- Identify the origin and number of events that are impacting your equipment
- Monitor the impact of your actions following the evolution of your facility's electrical health
- Leverage pro-active maintenance with color coded warnings that allow you to identify issues early and reduce business risks

Identify how power quality is impacting your business

- Determine the origin, estimated downtime and revenue losses due to power quality events
- Identify how much the grid is impacting your business and produce a simple report that can be used to negotiate with your utility
- Monitor the impact of power factor surcharges on your energy bill
- Use our analytical dashboard to decrease costs related to Power Quality and increase your production uptime

up to **40%**

of unplanned industry segment outages caused by power quality disturbances

(European Copper Institute 2012)

4%

of lost annual revenue in the industry segment can be attributed to power quality issues

(European Copper Institute 2012)



schneider-electric.us/powermonitoring

Life Is On

Schneider
Electric

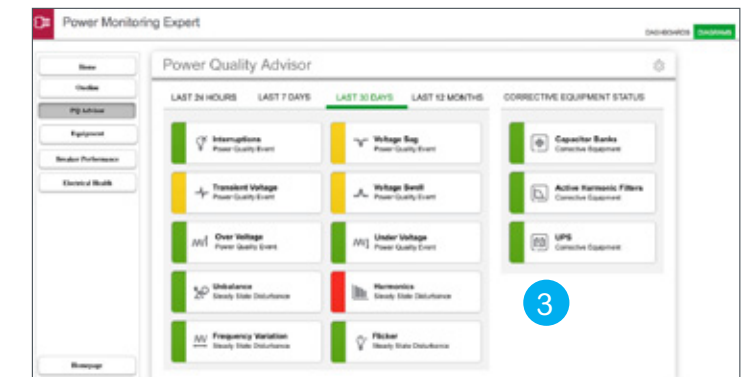
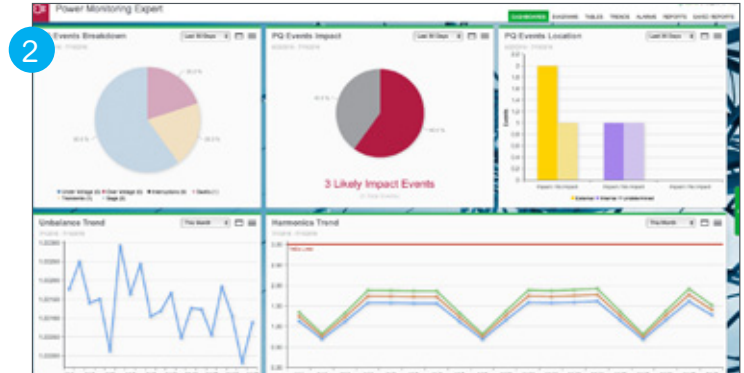
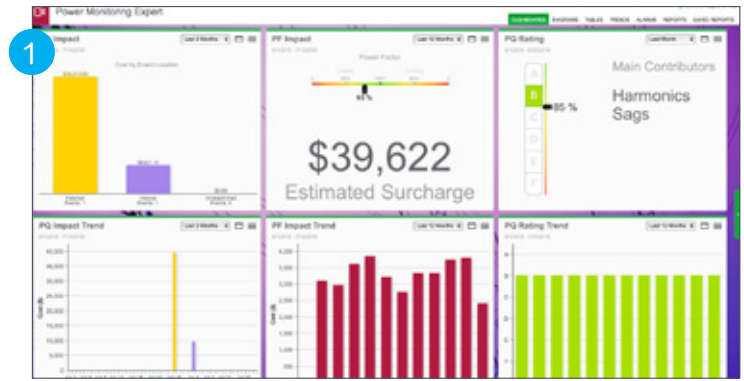
Power Quality Advisor Module Features

Dashboards

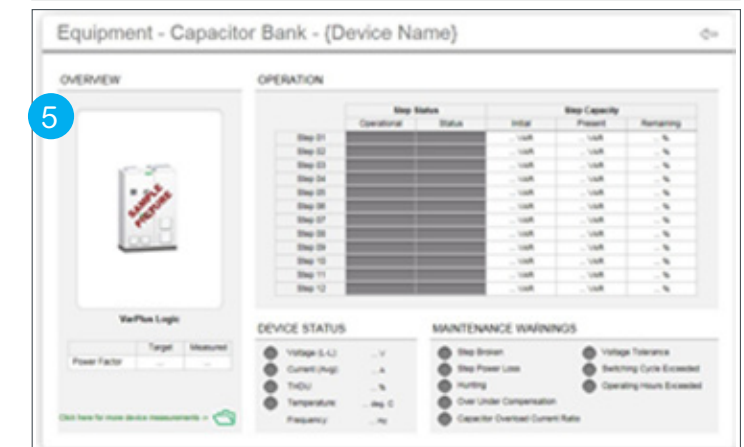
1. Easy-to-understand business impacts of your power quality
2. Overview dashboard provides a comprehensive and simple overview of the power quality within your facility
3. Simple color codes provide the status of each event, disturbance and correction equipment
4. Guided root cause analysis drills down in just a few clicks to see what issues are happening and where
5. Determine where maintenance activities are needed with warnings and equipment diagrams that provide operating status and maintenance warnings of your asset

Reports

1. Detailed information and analysis on downtime and estimated costs in easy to read reports that can be used to negotiate with your facility
2. Pinpoint focus areas for improving plant reliability



Duration	Magnitude	Timestamp	Node	Classification	Impact	Severity	Worst Phase	Location
0:00:00	49,203	09/10/2018 01:45:44,242	Victoria_Headrig-main_7650	Seg	Yes	4,626	V1	Internal
0:00:00	50,800	09/10/2018 01:46:44,522	Victoria_Headrig-PH_X	Seg	Yes	4,155	V1	Internal
0:30:00	51,442	01/10/2018 14:57:57,463	OH-40507_BA_247	Seg	Yes	52,789	V3	Undetermined
0:00:00	49,838	04/10/2018 08:46:48,819	OH-40507_BA_247	Seg	Yes	1,793	V2	Undetermined
1:47:00	49,493	03/10/2018 12:04:59,140	PQ_R2	Seg	Yes	83,348	V1	External
1:47:00	75,392	03/10/2018 09:53:45,824	PQ_R2	Seg	Yes	44,969	V1	External
0:13:00	51,442	25/12/2018 13:03:06,901	OH-40507_BA_247	Seg	Yes	6,507	V2	Undetermined



Power Quality Advisor available for Power Monitoring Expert and PowerSCADA Expert



Schneider Electric

295 Tech Park Drive
LaVergne, TN 37086
Tel: 615-287-3500

www.schneider-electric.us/powermonitoring

September 2016
Document Number 3080HO1604