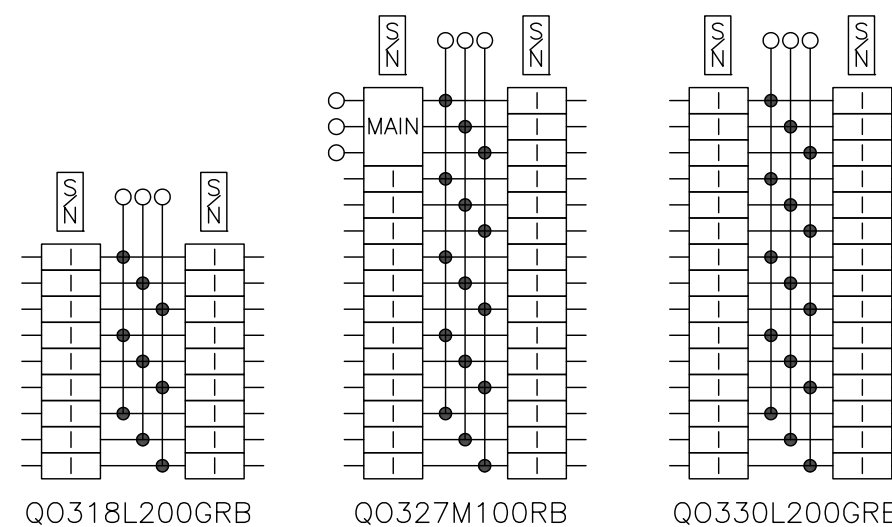
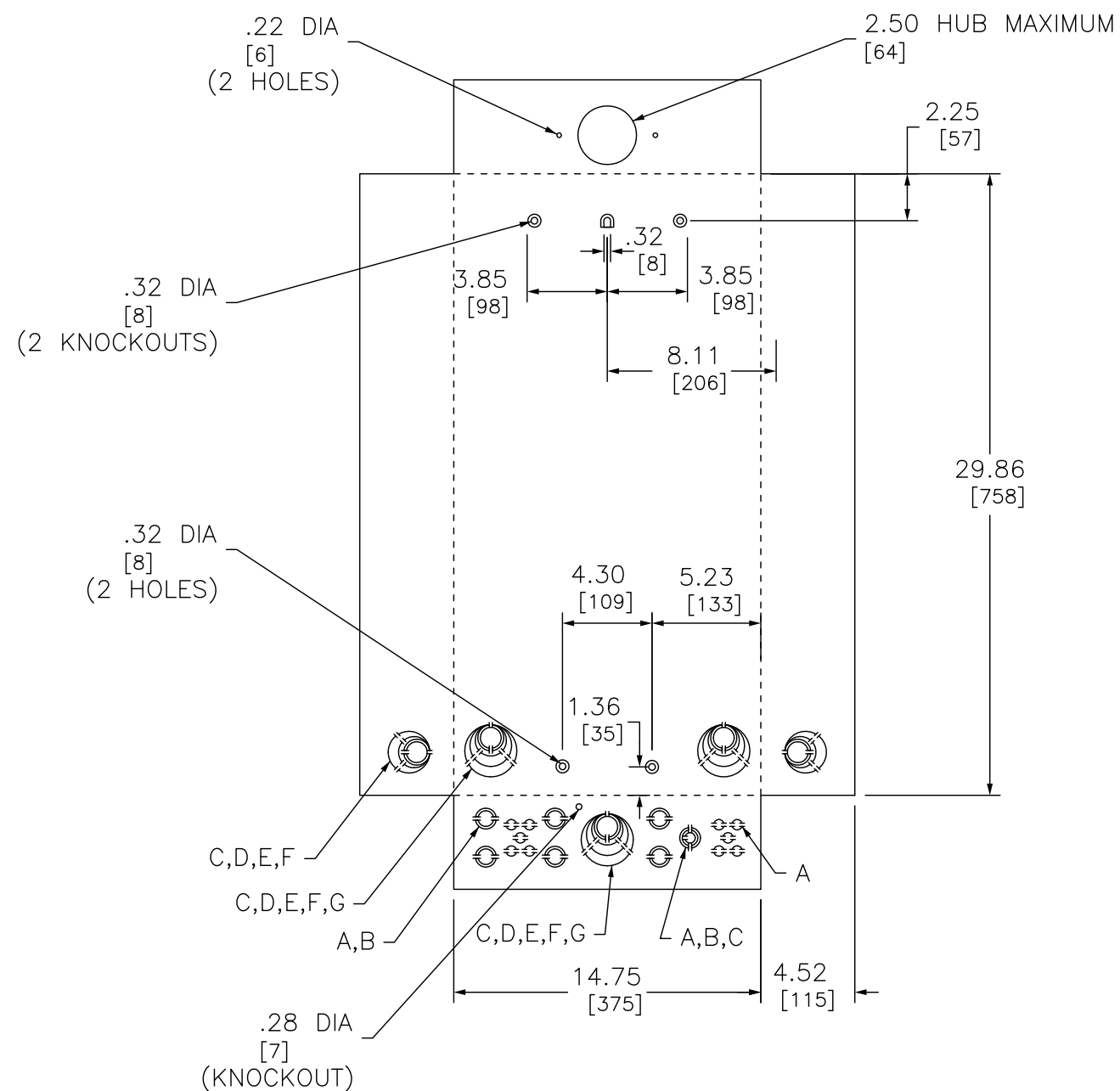


KNOCKOUTS		
SYMBOL	CONDUIT SIZE	
	IN	MM
A	.50	13
B	.75	19
C	1.00	25
D	1.25	32
E	1.50	38
F	2.00	51
G	2.50	64



DUAL DIMENSIONS: INCHES
MILLIMETERS

CATALOG NUMBER	MAXIMUM SYSTEM VOLTAGE	MAINS AMPERE RATING	SPACES	MAXIMUM NUMBER OF SINGLE POLE CIRCUITS	MAIN WIRE SIZE AWG AL/CU
QO318L200GRB	208Y/120VAC 3Ø 4W	200	18	18	#4-250
QO327M100RB	240/120VAC 3Ø 4W	100	27	27	#6-2/0
QO330L200GRB	240VAC 3Ø 3W	200	30	30	#4-250

NOTES:
 FINISH - GRAY BAKED ENAMEL ELECTRODEPOSITED OVER CLEANED PHOSPHATIZED STEEL.
 UL LISTED - FILE E-6294
 NEUTRALS - INSULATED GROUNDABLE.
 LOAD CENTERS WITH "G" IN CATALOG NUMBER INCLUDE A FIELD INSTALLABLE EQUIPMENT GROUND BAR KIT.
 WHEN MOUNTING THESE LOAD CENTERS, ALLOW 1.25 [32] OF CLEARANCE ON HINGED SIDE FOR THE DOOR TO OPEN

3 PHASE QO LOAD CENTERS
 RAINPROOF NEMA TYPE 3R ENCLOSURES
 SIDE HINGED OUTDOOR



DWG# 3040
NO.