

CLASS 9999, TYPE SC-22 SELECTOR SWITCH KIT

Instruction Sheet
30072-001-36-H
September, 1990

For NEMA Sizes 00, 0, 1, 2, 3 and 4, Type S Starters and Contactors
in NEMA 1 Enclosures

INSTALLATION IN REMOVABLE-COVER ENCLOSURE Common Control

(Motor and starter coil at same voltage)

1. Remove lead from left hand coil terminal to terminal 3 on controller.
2. Discard lugged red connector in kit.
3. Connect harness end with red wire stripped 1" to starter or contactor as follows:
 - A. Connect yellow lead to left hand coil terminal.
 - B. **Sizes 00, 0 and 1 only:** Loop red wire and connect to terminal screw of terminal 1, located behind pressure-wire connector of terminal L1.
 - C. **Size 2, 3 and 4:** Trim stripped portion of red wire to convenient length and connect to terminal 1 located at left side of terminal L1.
4. Slide tubing along harness as far as it will go toward connected end.
5. Thread yellow and red leads through the pair of horizontally aligned holes in the selector-switch bracket as shown in Fig. 2.
6. Connect leads to selector-switch unit as follows:
 - A. Connect yellow lead to terminal 3A.
 - B. Connect red lead to terminal 2A.
7. Press selector-switch unit into place on contactor or starter (see Fig. 1).
8. Remove large rectangular knockout from enclosure cover.

Separate Control

(Motor and starter coil not at same voltage)

Remove lead from left hand coil terminal to terminal 3 on controller.

Remove red lead from harness and discard with lugged red connector. Connect yellow lead from terminal 3A on selector switch to left hand coil terminal. Connect separate-control voltage source to terminal 2A on selector-switch unit, and terminal X2 (on overload relay of starter or coil of contactor). Attach Warning Label to outside surface of removable cover.

CONTENTS OF KIT

Quantity	Description
1	Selector-Switch Unit
1	Wire Harness
1	Red Connector Wire
1	Terminal Block (No. 31033-046-50)
*1	Wire Clip
▲1	Terminal Block Adapter (No. 31033-091-01)
1	Warning Label (No. 70031-455-01)

* For Hinged Door Enclosure Only.

▲ For Size 3 and 4 Only.

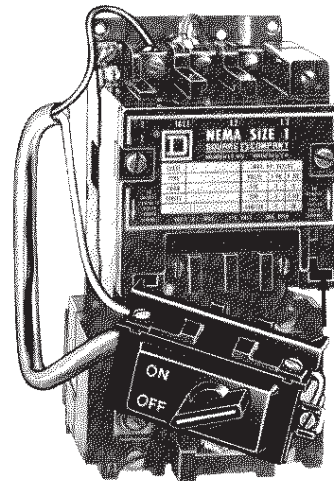


Figure 1

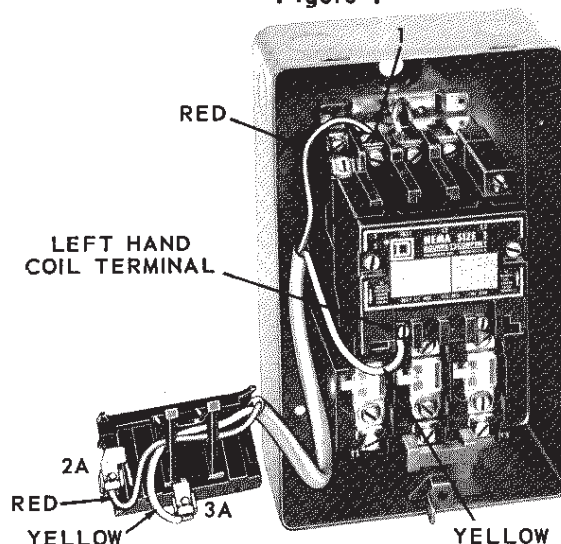


Figure 2
Removable-Cover
Enclosure

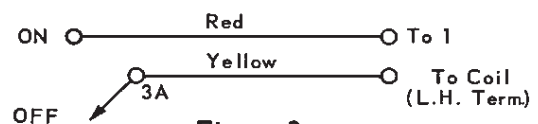


Figure 3
Common-Control Diagram
(Removable-Cover Enclosure)

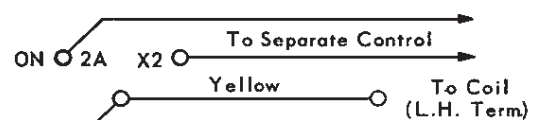


Figure 4
Separate-Control Diagram
(Removable-Cover Enclosure)

SQUARE D

INSTALLATION IN HINGED-DOOR ENCLOSURE

Common Control

(Motor and starter coil at same voltage)

- Remove lead from left hand coil terminal to terminal 3 on controller.
- Fasten terminal block to front of controller as follows:
 - Sizes 00, 0, 1 and 2 only:**
 - Remove left hand coil terminal screw.
 - Press terminal block into place (see Fig. 5).
 - Insert and tighten screw to secure terminal block to left hand coil terminal.
 - Size 3 and 4 only:**
 - Connect terminal block adapter to terminal block.

NOTE: — Size 4 Only — 1/2 inch must be cut from terminal block adapter as shown in Fig. 6.
 - Loosen left hand coil terminal screw and slide fork end of adapter under screw (see Fig. 6).
 - Press terminal block into place and secure screw.
- Connect harness to terminal block as follows:
 - Connect red lead to terminal 1A.
 - Connect yellow lead to terminal 3A.
- Connect lugged red connector as follows:
 - Sizes 00, 0 and 1 only:** Connect lugged end to terminal 1 on controller, located behind pressure-wire connector terminal L1.
 - Size 2, 3 and 4:** Connect lugged end to terminal 1 on controller, located at left side of terminal L1.
 - Connect stripped end to terminal 1A on terminal block.
- Connect free end of harness to selector-switch unit as follows:
 - Connect red lead to terminal 2A.
 - Connect yellow lead to terminal 3A.
- Remove large rectangular knockout from cover.
- Remove and discard plastic bracket from selector-switch unit but save screws. Use screws to secure selector-switch unit to bracket welded directly above selector-switch knockout.
- The wire clip should be mounted with flat portion located on inside of left cabinet wall. The clip should be against the front inside wall, with opening facing rear wall. The clip should be at the same height as the center of the selector-switch. Remove backing and press clip in place. Route harness through clip (see Fig. 5). **NOTE:** Adjust harness wires in tubing so they do not interfere with operation of reset button.

Separate Control

(Motor and starter coil not at same voltage)

Discard lugged red connector. Repeat steps 1, 2, 3, 5, 6, 7, and 8 from Common-Control, Hinged-Door Instructions. Connect separate-control voltage source to terminal 1A on terminal block, and terminal X2 (on overload relay of starter or coil of contactor). Attach Warning Label to outside surface of hinged-door.

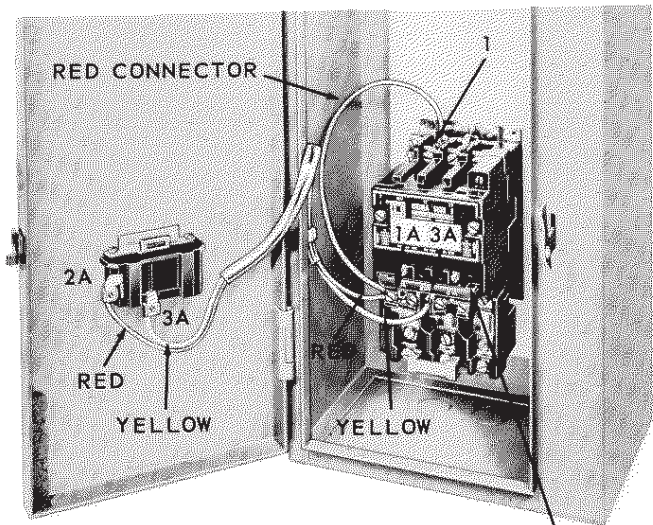


Figure 5
Hinged-Door Enclosure
TERMINAL BLOCK

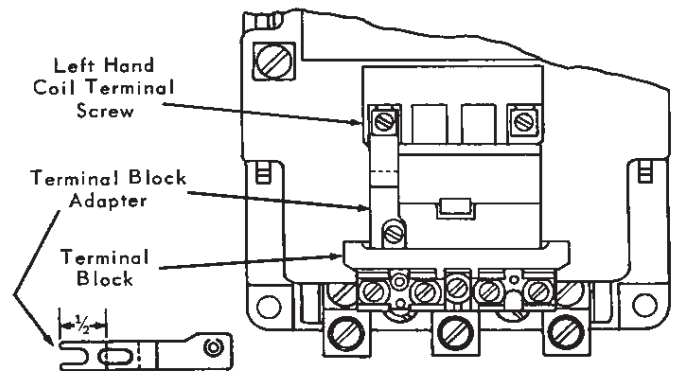


Figure 6

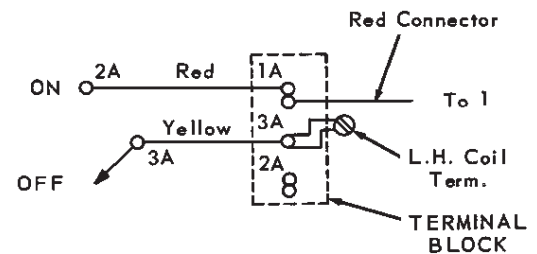


Figure 7
Common-Control Diagram
(Hinged-Door Enclosure)

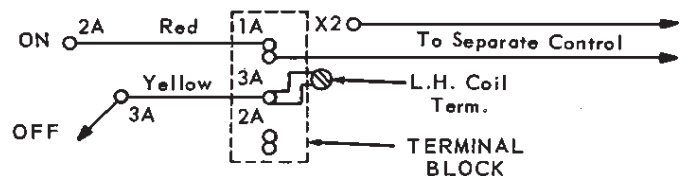


Figure 8
Separate-Control Diagram
(Hinged-Door Enclosure)