

Room Controllers

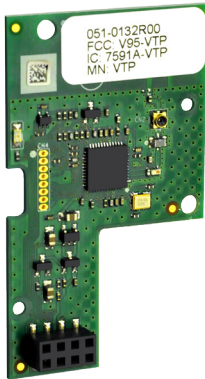
Communication Modules

VCM7000 Series

Accessory communication modules that allow the upgrade of all network-ready SE7000 Series room controllers to support networking communication over BACnet®, ZigBee® or Echelon®.



VCM7000 Series Communication Modules Features



AT A GLANCE

Communication options

- BACnet (B)
- Echelon (E)
- ZigBee Pro extended profile (P)
- ZigBee Pro (P)
- ZigBee proprietary wireless (W)

Overview

Accessory communication modules allow the upgrade of all network-ready SE7000 Series room controllers to support communication.

All current network-ready Schneider Electric™ SE7000 Series room controllers are capable of being retrofitted in the field with accessory communication modules. This enables the controllers to be integrated into virtually all leading building automation systems.

This approach provides the flexibility to add network communication strategies as budgets allow, or as building management needs change.

VCM7000 Series communication modules offer BACnet (B), Echelon (E) and two different types of wireless options.

Wireless Options

ZigBee Pro extended profile (P)

- Current generation of ZigBee Pro
- Makes SE7000 Series products compatible with SmartStruxure™ Lite solution's StruxureWare™ Building Expert
- Building Expert versions 2.5 and 2.6 offer a fixed Home Automation profile view of the controller and its' objects. Building Expert 2.7 and subsequent versions offer an extended object profile view of the controller and its' objects
- Building Expert 2.7 and subsequent versions can be integrated into SmartStruxure solution and other Schneider Electric building management systems

ZigBee proprietary wireless (W)

- Proprietary version of ZigBee not compatible with SmartStruxure Lite solution
- Used for wireless communication with SE7682S central managers and SEZ7000 zoning systems
- Combined with VWG50 BACnet, the SE7000 Series room controllers can be wirelessly integrated to SmartStruxure solution and other Schneider Electric building management systems
- Combined with the VWG-APP-1045 communication card, the SE7000 Series room controllers can be wirelessly integrated to an Niagara powered Jace2, Jace6, or Jace7 systems

All brand names, trademarks and registered trademarks are the property of their respective owners. Information contained within this document is subject to change without notice.

VCM7000 Series Communication Modules Features

Easy Installation

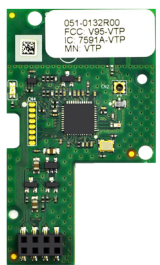
VCM7000 Series communication modules are easy to install. Network-ready SE7000 Series room controllers are specifically designed to enable upgrades to their communication capabilities.

Adding or changing communication modules only takes a few minutes but provide a big advantage to existing installations that require new networking and integration functionality.

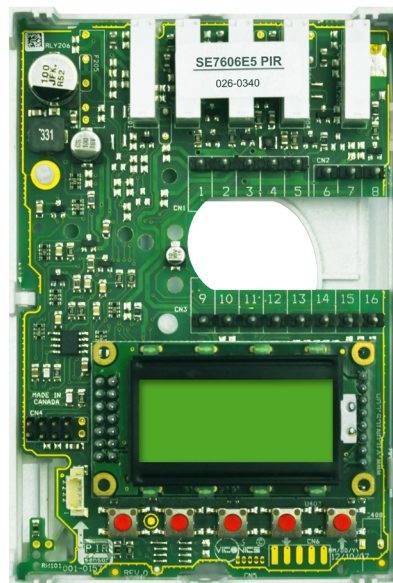


WHERE COMMUNICATION MODULES FIT

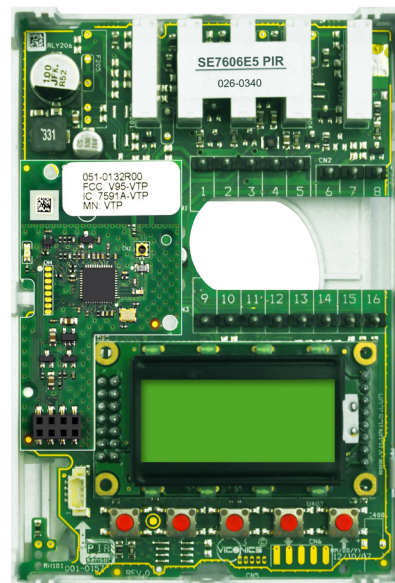
Wireless network module



Network-ready controller



Wireless network controller



All brand names, trademarks and registered trademarks are the property of their respective owners. Information contained within this document is subject to change without notice.

VCM7000 Series Communication Modules

Specifications

Operating Conditions

0 °C to 50 °C (32 °F to 122 °F)

0% to 95% R.H. non-condensing

Storage Conditions

-30 °C to 50 °C (-22 °F to 122 °F)

0% to 95% R.H. non-condensing

Approximate shipping weight

0.34kg (0.75lb)

Agency approvals all models

UL: UL 873 (US) and CSA C22.2 No. 24 (Canada), File E27734 with CCN

XAPX (US) and XAPX7 (Canada)

Industry Canada: ICES-003 (Canada)

FCC: Compliant to CFR 47, Part 15, Subpart B, Class A (US)

CE : EMC Directive 89/336/EEC (Europe Union)

C-Tick: AS/NZS CISPR 22 Compliant (Australia / New Zealand) Supplier Code Number N10696

Agency approvals wireless models

FCC: Compliant to: Part 15, Subpart C

THIS DEVICE COMPLIES WITH PART 15 OF THE FCC RULES. OPERATION IS SUBJECT TO THE FOLLOWING TWO CONDITIONS: (1) THIS DEVICE MAY NOT CAUSE HARMFUL INTERFER-

ENCE, AND (2) THIS DEVICE MUST ACCEPT ANY INTERFERENCE RECEIVED, INCLUDING INTERFERENCE THAT MAY CAUSE UNDESIRE OPERATION.

NOTE: THE MANUFACTURER IS NOT RESPONSIBLE FOR ANY RADIO OR TV INTERFERENCE CAUSED BY UNAUTHORIZED MODIFICATIONS TO THIS EQUIPMENT. SUCH MODIFICATIONS COULD VOID THE USER'S AUTHORITY TO OPERATE THE EQUIPMENT.



Check with your local government for instruction on disposal of these products.

Ordering information

BACnet (B)

VCM7300V5045B	BACnet retrofit communication module for all SE7200/SE7300 Series
VCM7300T5045B	BACnet retrofit communication module for all SER7300 Series
VCM7600V5045B	BACnet retrofit communication module for all SE7600 Series
VCM7607V5045B	BACnet retrofit communication module for all SE76x7 Series with RH

Echelon (E)

VCM7300V5045E	Echelon retrofit communication module for all SE7200/SE7300 Series
VCM7300T5045E	Echelon retrofit communication module for all SER7300 Series
VCM7600V5045E	Echelon retrofit communication module for all SE7600 Series
VCM7607V5045E	Echelon retrofit communication module for all SE76x7 Series with RH

ZigBee Pro extended profile (P)

VCM7000V5045P	ZigBee Pro extended profile retrofit communication module for all SE7000/SER7000 Series
---------------	---

ZigBee proprietary wireless (W)

VCM7000V5045W	ZigBee proprietary wireless retrofit communication module for all SE7000/SER7000 Series
---------------	---