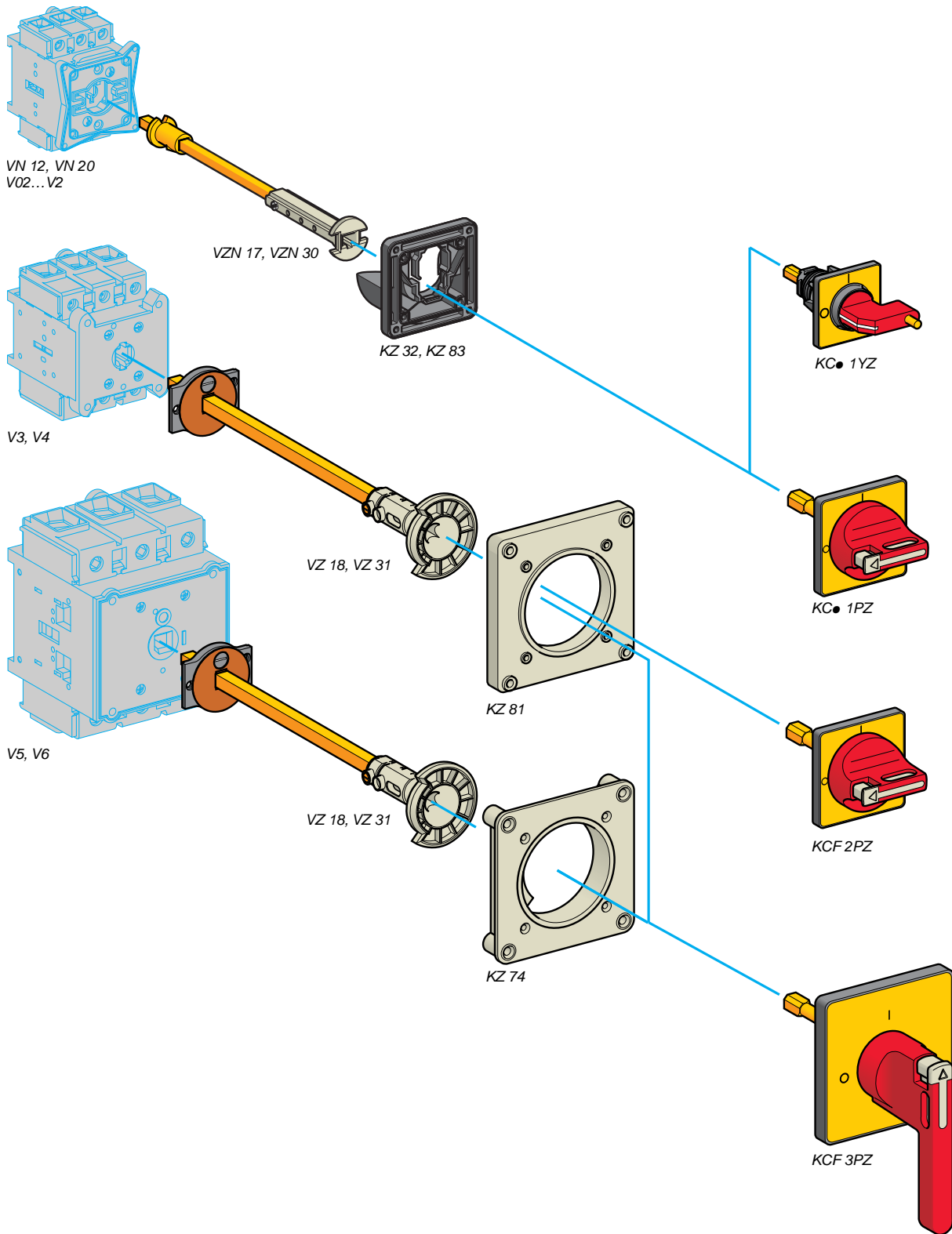


Safety control and protection solutions

Mini-VARIO and VARIO switch disconnectors



Safety control and protection solutions

Mini-VARIO and VARIO switch disconnectors
Operators, handles and front plates
(for customer assembly)

- Padlockable operating handle (padlocks not supplied).
- Degree of protection IP 65.
- Marking on operator $\circ \downarrow$.

Handles and front plates for main and Emergency stop switch disconnectors

For switch body	Operator Handle	Front plate		Reference	Weight
		Dimensions	Fixing		
		mm			
VN 12, VN 20 V02...V2	Red, padlockable with up to 1 padlock (Ø 4 to Ø 6)	Yellow 45 x 45	Ø 22.5	KCC 1YZ	0.050
			4 screws	KCE 1YZ	0.040
	Red, padlockable with up to 3 padlocks (Ø 4 to Ø 8)	Yellow 60 x 60	Ø 22.5	KCD 1PZ	0.082
4 screws			KCF 1PZ	0.075	
V3 and V4	Red, padlockable with up to 3 padlocks (Ø 4 to Ø 8)	Yellow 60 x 60	4 screws	KCF 2PZ	0.070
V5 and V6	Red, long, padlockable with up to 3 padlocks (Ø 4 to Ø 8)	Yellow 90 x 90	4 screws	KCF 3PZ (1)	0.160

(1) For door mounting of 63 and 80 A switch disconnectors, adapter plate KZ 106 must be ordered separately (see page 23052-EN/4).

Safety control and protection solutions

Mini-VARIO and VARIO switch disconnectors Accessories



VZ 8



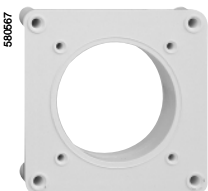
VZ 26



VZ 18



KZ 32



KZ 81

Input terminal protection shrouds

Description	For use on	Reference	Weight kg
For switch bodies (3-pole shroud)	V02...V2	VZ 8	0.015
	V3 and V4	VZ 9	0.020
	V5 and V6	VZ 10	0.060
For add-on pole modules (single-pole shroud)	VZ 02...VZ 2, VZ 11, VZ 14	VZ 26	0.005
	VZ 3, VZ 4, VZ 12, VZ 15	VZ 27	0.007
	VZ 13, VZ 16	VZ 28	0.020
For contact blocks with 2 auxiliary contacts	–	VZ 29	0.005

Components for door interlocking

For rear fixing switch disconnectors mounted at the back of an enclosure, in addition to a direct operator

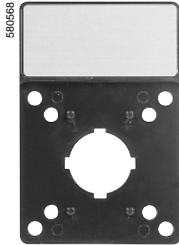
Description	For use on	Distance enc.back/door mm	Sold in lots of	Unit reference	Weight kg
Shaft extensions	VN 12, VN 20 V02...V2	300...330	1	VZN 17 (1)	0.100
		400...430	1	VZN 30 (1)	0.130
	V02...V2	300...330	1	VZ 17	0.075
		400...430	1	VZ 30	0.125
	V3 and V4	300...320	1	VZ 18	0.170
		400...420	1	VZ 31	0.215
V5 and V6	330...350	1	VZ 18	0.170	
	430...450	1	VZ 31	0.215	
Door interlock plates	VN 12, VN 20 V02...V2	–	5	KZ 32	0.177
	V3...V6	–	5	KZ 74	0.020

Description	For use on	Front plate dimensions mm	Sold in lots of	Unit reference	Weight kg
Plates for door mounting of handles with 4 screw fixing	VN 12, VN 20 V02...V2	45 x 45 or 60 x 60	5	KZ 83	0.205
	V3...V6	60 x 60 or 90 x 90	5	KZ 81	0.010
Adapter plate for switch disconnectors	V3 and V4	90 x 90	5	KZ 106	0.075

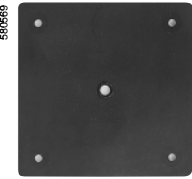
(1) Can be used with V02 to V2 switches.

Safety control and protection solutions

Mini-VARIO and VARIO switch disconnectors Accessories



KZ 15



KZ 67



Z01

Accessories for operators

Description	For use on	Front plate dimensions mm	Sold in lots of	Unit reference	Weight kg	
Legend holder with silver coloured blank legend plate	Front plate	45 x 45	5	KZ 13	0,060	
		60 x 60	5	KZ 15	0,065	
		90 x 90	5	KZ 103	0,070	
Legend holders without legend plate	Front plate	45 x 45	20	KZ 14	0,060	
		60 x 60	10	KZ 16	0,065	
		90 x 90	5	KZ 101	0,070	
Silver coloured blank legend plates for engraving by customer	KZ 14	–	20	KZ 76	0,020	
	KZ 16	–	10	KZ 77	0,010	
	KZ 101	–	5	KZ 100	0,005	
Seals	VN 12, VN 20	45 x 45	5	KZ 65	0,037	
		V02...V2	60 x 60	5	KZ 66	0,033
		V3 and V4	60 x 60	5	KZ 62	0,033
		V3...V6	90 x 90	5	KZ 67	0,064
Tightening tool	For operators with Ø 22.5 fixing	–	5	Z01	0,050	