

A sustainable energy efficient building is within your reach

EcoStruxure™ Energy Hub

Owning and operating a building is complex. Building energy management can be simple and effective to help you achieve your goals.



Comply to building energy codes

Energy Hub supports common building energy code requirements.



Achieve up to 30% energy savings

Energy Hub enables you to analyze energy usage by load type, building, floor, zone, and time period so you can identify waste and take action.

Generate tenant billing reports to create energy accountability to make sustainability a building-wide responsibility.



Ensure business continuity

Energy Hub enables you to improve reliability and availability of building energy with faster response time to electrical issues.



Reach your sustainability goals

Energy Hub helps to increase building value by differentiating your brand and making progress towards sustainability.

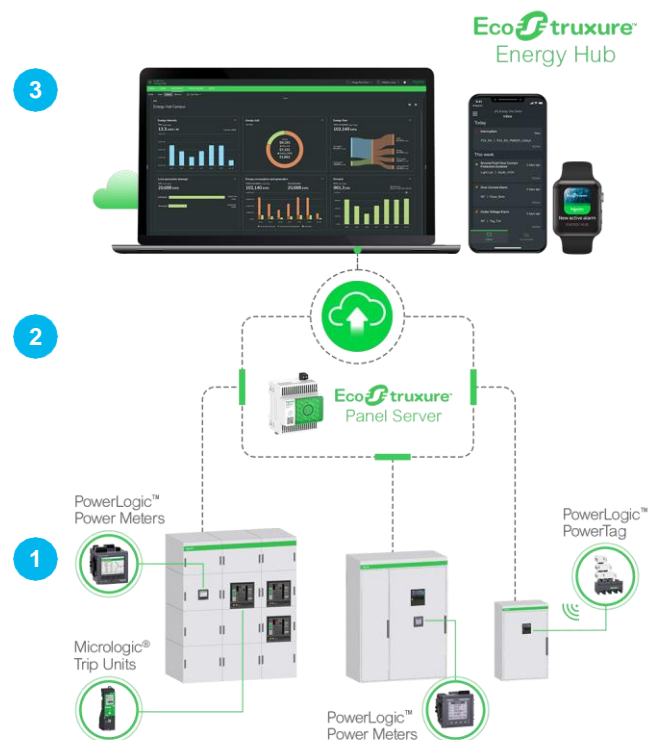
Energy insight at your fingertips

Getting started with EcoStruxure Energy Hub is simple and fast. It's as simple as 1-2-3.

- 1 Install smart meters, intelligent circuit breakers such as **PowerLogic** or **MicroLogic** – even 3rd party devices.
- 2 Connect through our simple and secure cloud gateways such as **EcoStruxure Panel Server**.
- 3 Login and setup your **EcoStruxure Energy Hub** application in minutes with intuitive drag-and-drop configuration.

Energy Hub web or mobile app

Connect one or multiple sites



EcoStruxure Energy Hub subscription plans

Subscription plan pricing is determined by the feature plan you choose number of IoT devices you connect, and the duration (one- or three-year terms) - regardless of the number of sites. Contact your local Schneider Electric sales representative or partner for pricing, or reach out to our Customer Care Center.



Feature plan details

	ADVANCED
Platform	
Secure cloud hosting (ISO27001 compliant)	•
Schneider Electric and 3rd party device support	•
Historical data storage (with active subscription)	•
Number of users	Unlimited
Email and mobile push notifications (100 per device credit/month)	•
Technical support and online user community	•
Available with iOS and Android mobile app	•
Mobile site manager experience	•
Mobile operations and maintenance experience	•
Web browser portal	•
Multi-site views and data aggregation	•
Energy and sustainability	
Water, gas, and electricity monitoring	•
Peak demand monitoring and alerts	•
Energy over-consumption threshold alerts	•
Basic on-off load control and scheduling	•
Refrigeration temperature and status monitoring	•
HACCP* reporting	•
Building energy code compliance (monitoring and reporting)**	•
Building area usage ranking	•
Multi-site comparison and ranking	•
Energy intensity and weather normalization	•
Energy usage during/outside business hours	•
Energy usage insights homepage	•
Utility and renewables energy flow	•
Co ₂ equivalent monitoring and tracking	•
Tenant energy billing	
Tenant bill-run configuration with simple rates	•
Tenant bill history	•
Export tenant bills to PDF	•
Electrical power monitoring	
Basic electrical alerts (interruption, overcurrent)	•
Power quality alarms (sag/swell, transient, over/under voltage, THD)	•
Circuit breaker trip alarms	•
Electrical cable over-heating alarms	•
Live electrical measurement monitoring and trending	•
Digital electrical one-line diagram	•
Integrations	
Data API (available data according to active subscription)	Option

*HACCP - Hazard Analysis Critical Control Point

**Monitor energy by load type, report on energy usage vs target according to applicable requirements of supported energy regulations (ASHRAE 90.1, IECC, CA Title 24, LEED, NABERS AU, and other local code requirements may be supported. Verify above features with code requirements.)

Compatible gateways and devices

Connected devices are accounted for in your Energy Hub subscription through device credits. A device in Energy Hub refers to a physical, standalone data measuring device such as a sensor, power, water or gas meter, or intelligent circuit breaker. Each of these individual devices count towards one device credit, purchased as quantities of your subscription feature plan. Default compatibility of devices and gateways are listed in the table below.

Additional device support continues to grow — consult our [official device support list here](#).

Supported devices

Category	Device type	Panel Server Entry (PAS 400)	Panel Server Universal (PAS600 / PAS800)	Site server
Wireless Sensors	PowerTag Energy (M63, P63, F63, F160, M250, M630)	●	●	●*
	PowerTag Energy Rope (120A, 200A, 600A, 1000A, 2000A)	●	●	●*
	PowerLogic Tag (QO, E-Frame)	●	●	●*
	PowerLogic Tag Rope (120, 600, 1000, 2000A)	●	●	●*
Environmental Sensors	NT935 Temperature Relay	●	●	●
	TH110	●	●	●*
	CL110	●	●	●*
	PowerLogic PowerTag Ambient	●	●	●
	PowerLogic HeatTag	●	●	●*
Energy Meters	EasyLogic series (Hexa, EM1xxx,2xxx, DM6xxx, PM1xxxH, PM2xxx, etc)	●	●	●
	PowerLogic PM3000 series (PM3250, PM3255)	●	●	●
	PowerLogic EM64xx (EM64xxH, EM6400NG)	●	●	●
	PowerLogic EM3500 series (3550/3555)	●	●	●
	PowerLogic EM4200	●	●	●
	Acti-9 iEM series (2050, 2055, 2150, 2155, 3150, 3155, 3250, 3255, 3350, 3355, 3455, 3555)	●	●	●
Embedded Metering	Micrologic X (MasterPacT MTZ)	●	●	●
	Micrologic P, H, E, A (ComPacT NSX, legacy MasterPacT)	●	●	●
Power Meters	PowerLogic PM3000 series (3200, 3210, 3250, 3255)	●	●	●
	PowerLogic PM5000 series (5110, 5310, 5320, 5330, 5340, 5350, 5360, 5560, 5563)	●	●	●
	PowerLogic EM7200 series (7230, 7280, 7290)	●	●	●
	PowerLogic PM8000 series (8210, 8213, 8214, 8240, 8243, 8244)	●	●**	●
	PowerLogic ION9000 series	●	●**	●
	Legacy Powerlogic (PM2xx/6xx/7xx/8xx, CM2xxx/3xxx/4xxx, ION7xxx)	●	●	●
Branch Circuit Meters	PowerLogic HDPM6000	●	●	●
	PowerLogic BCPM	●	●	●
	PowerLogic EM4900	●	●	●
3rd Party Devices	3rd Party Water, Gas and Electricity Meters via Pulse inputs	●	●	●
	3rd Party Modbus Water, Gas and Electricity Meters (with custom model using EPC Web)	●	●	●

Support in this table refers to compatibility of device with Energy Hub via supported gateways. Device compatibility with the gateways alone may vary.

● Supported ●* Requires downstream gateway ●** Limited support for Modbus data only ● Not supported

How do I get it?

Energy Hub can be ordered through the mySchneider™ portal, Schneider Electric Sales Representative or an authorized distributor. [Find distributor](#)

List of commercial references:

Plan	Part number	Description	
Advanced	PSWEOADVPLT12A	Energy Hub Advanced Subscription	1 Device Credit - 1 Year
	PSWEOADVPLT36A	Energy Hub Advanced Subscription	1 Device Credit - 3 Years
API (option)	PSWEOAPIOLT12A	Energy Hub API Add-On Subscription	1 Device Credit - 1 Year
	PSWEOAPIOLT36A	Energy Hub API Add-On Subscription	1 Device Credit - 3 Years

Visit the website to learn more, request a demo or contact us.

se.com/EcoStruxure-Energy-Hub

Life Is On



Schneider Electric Industries
35, rue Joseph Monier – CS 30323
F92506 Rueil-Malmaison Cedex