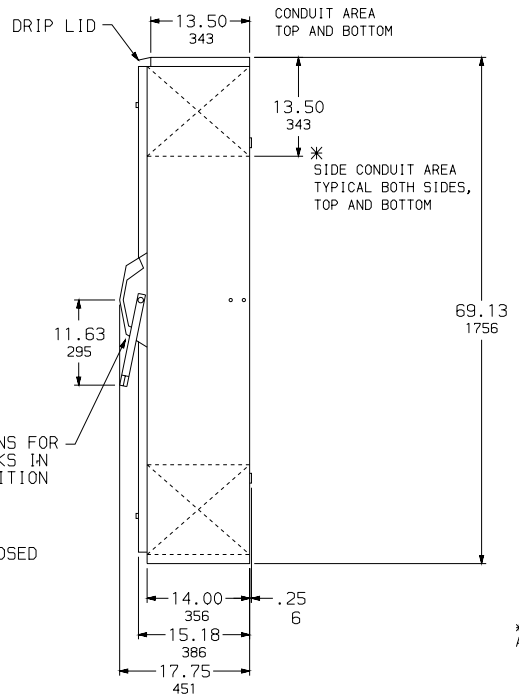
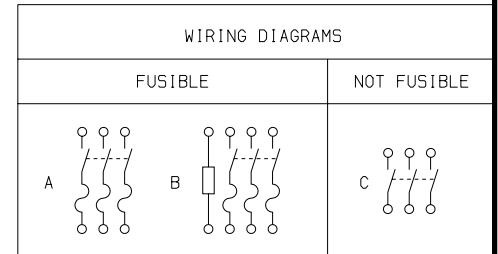


FRONT VIEW



RIGHT SIDE VIEW



TERMINAL LUGS

AMPERES	MAX. WIRE	MIN. WIRE	TYPE
800	(3) 750 KCMIL	(3) #3/0 AWG	75°C AL OR CU

FUSE PROVISIONS

AMPERES	TYPE	AMPERES	TYPE
800	CLASS "L"	600	CLASS "L"

* SIDE ENTRY/EXIT MUST MEET ALL APPLICABLE STANDARDS & CODES.

NOTES: FINISH - GRAY BAKED ENAMEL-ANSI #49
 CSA CERTIFIED - FILE LL-97406-3
 UL LISTED - FILE E-154828
 ALL NEUTRALS - INSULATED GROUNDABLE (SHIPPED CARTONED FOR FIELD INSTALLATION)
 SUITABLE FOR USE AS SERVICE EQUIPMENT
 SHORT CIRCUIT RATING:
 200,000 AMPERES WHEN USED WITH OR PROTECTED BY CLASS L FUSES.
 75 LBS. MAX. FORCE REQUIRED TO OPERATE HANDLE.
 FOR NEMA TYPE 3R APPLICATIONS 1/4-20 DRAIN SCREW MUST BE REMOVED FROM BOTTOM ENDWALL.

DUAL DIMENSIONS: INCHES MILLIMETERS

CATALOG NUMBER	VOLTAGE RATINGS	WIRING DIAG.	3 PHASE HORSEPOWER RATINGS						DC HORSEPOWER RATINGS	
			240VAC		480VAC		600VAC		250VDC	600VDC
			STD.	MAX.	STD.	MAX.	STD.	MAX.		
H327AWK	240VAC; 250VDC	A	100	250	-	-	-	-	50	-
H327NAWK	240VAC; 250VDC	B	100	250	-	-	-	50	-	
H367AWK	600VAC; 600VDC	A	-	-	200	500	250	500	50	50
H367NAWK	600VAC; 600VDC	B	-	-	200	500	250	500	50	50
HU367AWK	600VAC; 600VDC	C	100	250	200	500	250	500	50	50

HEAVY DUTY SAFETY SWITCHES
 VISIBLE BLADE TYPE
 800 AMPERE
 ENCLOSURE - NEMA TYPE 12
 NEMA TYPE 3R RAINPROOF
 NEMA TYPE 5 DUST TIGHT (INDOOR)



DWG. NO. 2149