

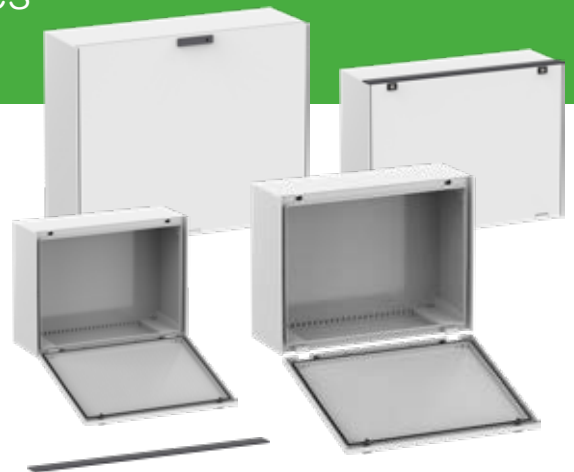


Thalassa PLM

Landscape (horizontal) enclosures

New horizontal wall mounting enclosures designed for photovoltaic applications

- Removable door without removing the hinges and pin: easy and quick access to the electric devices installed inside the enclosure.
- Wider: More space available in the bottom of the enclosure to install additional cable entries.
- Protection degree IP 66: IEC 60529
- Impact resistance IK 10: IEC 62262



Dimensions (mm)			Enclosure	Canopy	Mounting Plates		Wall Fixing lugs
Height	Width	Depth			Galvanized Steel	Polyester	
536	747	300	NSYPLM57G	NSYCSA57	NSYMM75	NSYMPP75	NSYPFPLMG* (Polyamide with fiberglass) NSYFPXPLM* (Stainless Steel)
636	847	300	NSYPLM68G	NSYCSA68	NSYMM86	NSYMPP86	
852	1056	350	NSYPLM810G	NSYCSA810	NSYMM108	NSYMPP108	
Content			1	1	1	1	4

* applicable to all references: quick and easy assembly through the inserts, without drilling the enclosure. IP guaranteed.



Customized Service
Machining service available. Please consult your Universal Enclosure sales representative.

Exclusive Canopy. ref: NSYCSA...
Self-adhesive & fixable by screws. For outdoors the canopy must be installed for protection of the door gasket against water stagnation. IP degree is maintained.

Scan for video

