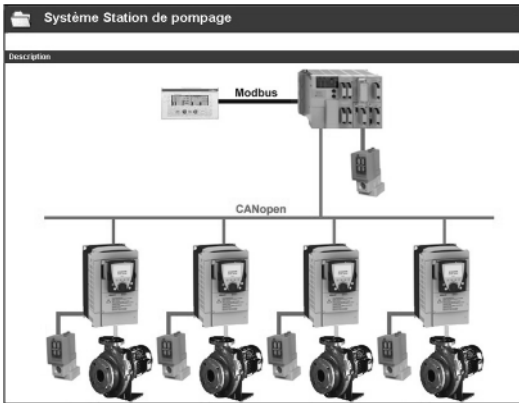


534613



PowerSuite screen on PC  
Installed base management

## Presentation

The PowerSuite software workshop for PC is a user-friendly tool designed for setting up control devices for the following Telemecanique brand motors:

- TeSys U controller-starters
  - Altistart soft start/soft stop units
  - Altivar variable speed drives
  - Lexium 05 servo drives
- It includes various functions designed for setup phases such as:
- Preparing configurations
  - Start-up
  - Maintenance

In order to simplify the start-up and maintenance phases, the PowerSuite software workshop can use the Bluetooth® wireless link.

## Functions (1)

### Preparing configurations

The PowerSuite software workshop can be used on its own to generate the device configuration. It can be saved, printed and exported to office automation software.

The PowerSuite software workshop can also be used to convert an Altivar 58 or Altivar 58F drive configuration to an Altivar 71 drive configuration.

### Start-up

When the PC is connected to the device, the PowerSuite software workshop can be used to:

- Transfer the generated configuration
- Adjust
- Monitor. This option has been enhanced with new functions such as:
  - The oscilloscope
  - The high-speed oscilloscope (minimum time base: 2 ms)
  - The FFT (*Fast Fourier Transform*) oscilloscope
  - Displaying communication parameters
- Control
- Save the final configuration

### Maintenance

In order to simplify maintenance operations, the PowerSuite software workshop can be used to:

- Compare the configuration of a device currently being used with a saved configuration
- Manage the user's installed base of equipment, in particular:
  - Organize the installed base into folders (electrical equipment, machinery, workshops, etc.)
  - Store maintenance messages
  - Simplify Ethernet connection by storing the IP address

### User interface

The PowerSuite software workshop can be used to:

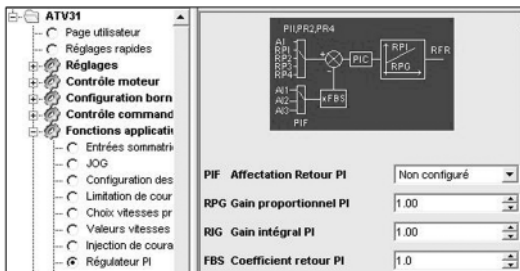
- Present the device parameters arranged by function in the form of illustrated views of diagrams or simple tables
- Customize the parameter names
- Create:
  - A user menu (choice of particular parameters)
  - Monitoring control panels with graphic elements (cursors, gauges, bar charts)
- Perform sort operations on the parameters
- Display text in five languages (English, French, German, Italian and Spanish). The language changes immediately and there is no need to restart the program.

It also has online contextual help:

- On the PowerSuite tool
- On the device functions by direct access to the user manuals

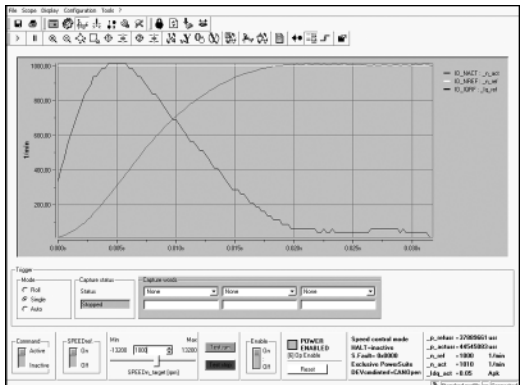
(1) Some functions are not available for all devices.  
See the table of function availability, page 60200/3.

533181



PowerSuite screen on PC  
View of PI regulator function parameters

572706



View of the FFT oscilloscope function

**Function availability for the PowerSuite software workshop**

Functions not listed in the table are available for all devices.

Function available with devices	Controller-starter	Soft start/soft stop unit					Servo drives
	TeSys U	ATS 48	ATV 11	ATV 31	ATV 61	ATV 71	LXM 05
Monitoring	■	■	■	■	■	■	■
Oscilloscope	■	■	■	■	■	■	■
High-speed oscilloscope	■	■	■	■	■	■	■
FFT oscilloscope	■	■	■	■	■	■	■
Display of communication parameters	■	■	■	■	■	■	■
Control	■	■	■	■	■	■	■
Customization of parameter names	■	■	■	■	■	■	■
Creation of a user menu	■	■	■	■	■	■	■
Creation of monitoring control panels	■	■	■	■	■	■	■
Sort operation on parameters	■	■	■	■	■	■	■

■ Functions available  
 □ Functions not available

**Connections (1)**

**Modbus serial link**

The PowerSuite software workshop can be connected directly to the device terminal port or Modbus serial link port via the serial port on the PC.

Two types of connection are possible:

- With a single device (point-to-point connection), using a VW3 A8 106 PC serial port connection kit
- With a number of devices (multidrop connection), using the XGS Z24 interface.

**Ethernet TCP/IP communication network**

The PowerSuite software workshop can be connected to an Ethernet TCP/IP network.

In this case, the devices can be accessed:

- Using a VW3 A3 310 communication card for the Altivar 61 and 71 drives
- Using a TSX ETG 100 Ethernet/Modbus bridge

**Bluetooth® wireless link**

The PowerSuite software workshop can communicate via a Bluetooth® radio link with a device equipped with a Bluetooth® - Modbus VW3 A8 114 adapter. The adapter plugs into the device connector terminal port or Modbus serial link port and has a range of 10 m (class 2).

If the PC does not have Bluetooth® technology, use the VW3 A8 115 USB-Bluetooth® adapter.

**Remote maintenance**

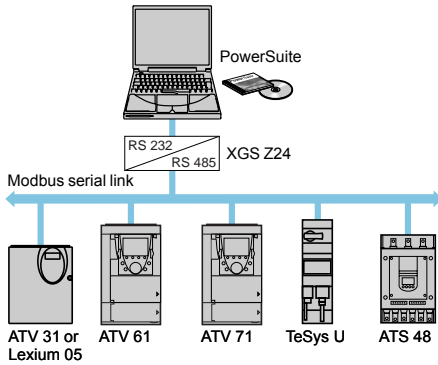
Using a simple Ethernet connection, the PowerSuite software workshop can be used for remote monitoring and diagnostics.

When devices are not connected to the Ethernet network, or it is not directly accessible, various remote transmission solutions may be possible (modem, teleprocessing gateway, etc.). Please consult your Regional Sales Office.

(1) Please refer to the compatibility table on page 60200/5.

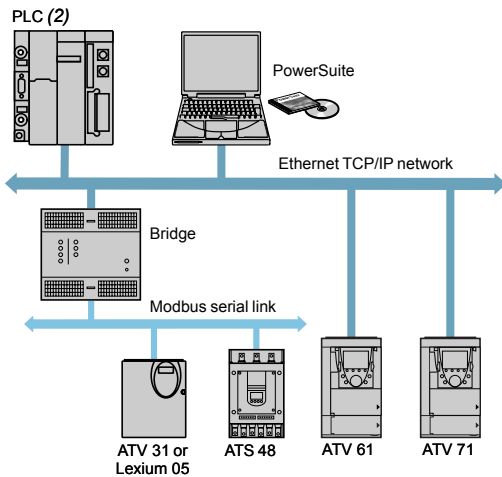
(2) Please refer to our "Automation platform Modicon Premium and Unity - PL7 software" and "Automation platform Modicon TSX Micro - PL7 software" catalogues.

522793



Modbus multidrop connection

522794



Ethernet connection

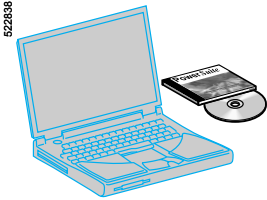
## PowerSuite software workshop

Description	Composition	Reference	Weight kg
<b>PowerSuite CD-ROM</b>	<ul style="list-style-type: none"> <li>■ 1 program for PC in English, French, German, Italian and Spanish</li> <li>■ Variable speed drive, starter and servo drive technical manuals</li> </ul>	<b>VW3 A8 104</b>	0.100
<b>PowerSuite update CD-ROM (1)</b>	<ul style="list-style-type: none"> <li>■ 1 program for PC in English, French, German, Italian and Spanish</li> <li>■ Variable speed drive and starter technical manuals</li> </ul>	<b>VW3 A8 105</b>	0.100
<b>Connection kit for PC serial port</b> for point-to-point Modbus connection	<ul style="list-style-type: none"> <li>■ 1 x 3 m cable with 2 RJ45 connectors</li> <li>■ 1 RS 232/RS 485 converter with one 9-way female SUB-D connector and 1 RJ45 connector</li> <li>■ 1 converter for the ATV 11 drive, with one 4-way male connector and one RJ45 connector</li> <li>■ 1 RJ45/9-way male SUB-D adapter for connecting ATV 38/58/58F drives</li> <li>■ 1 RJ45/9-way female SUB-D adapter for connecting ATV 68 drives.</li> </ul>	<b>VW3 A8 106</b>	0.350
<b>RS 232-RS 485 interface</b> for multidrop Modbus connection	1 multidrop Modbus converter for connection to screw terminals. Requires a 24 V $\overline{\text{---}}$ (20...30 V), 20 mA power supply (2).	<b>XGS Z24</b>	0.105
<b>Modbus-Bluetooth® adapter (3)</b>	<ul style="list-style-type: none"> <li>■ 1 Bluetooth® adapter (10 m range, class 2) with 1 RJ45 connector</li> <li>■ 1 x 0.1 m cable with 2 RJ45 connectors for PowerSuite</li> <li>■ 1 x 0.1 m cable with 1 RJ45 connector and 1 mini DIN connector for TwidoSoft</li> <li>■ 1 RJ45/9-way male SUB-D adapter for connecting ATV 38/58/58F drives.</li> </ul>	<b>VW3 A8 114</b>	0.155
<b>USB-Bluetooth® adapter for PC</b>	This adapter is required for a PC which is not equipped with Bluetooth® technology. It is connected to a USB port on the PC. Range of 10 m (class 2).	<b>VW3 A8 115</b>	0.290

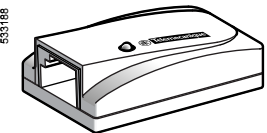
(1) Updates a version  $\geq$  V1.40 with the latest available version. For versions  $<$  V1.40, you should order the PowerSuite CD-ROM, VW3 A8 104.

(2) Please consult our specialist catalogue "Power supplies, splitter blocks and interfaces".

(3) Can also be used to communicate between a Twido PLC and the TwidoSoft software workshop.



VW3 A8 104



VW3 A8 114

**Compatibility of PowerSuite software workshop with the following devices (1)**

Connection	Controller-starter	Soft start/soft stop unit	Drives				Servo drives
	TeSys U	ATS 48	ATV 11	ATV 31	ATV 61	ATV 71	LXM 05A/B (2)
Modbus	V1.40	V1.30	V1.40	V2.0	V2.3	V2.2	V2.4
Ethernet (device equipped with an Ethernet TCP/IP card)					V2.3	V2.2	
Ethernet via Ethernet/Modbus bridge		V1.50		V2.0	V2.3	V2.2	V2.4
Bluetooth®		V2.2		V2.2	V2.3	V2.2	V2.4

Compatible software versions  
 Incompatible software versions

**Hardware and software environments**

The PowerSuite software workshop can operate in the following PC environments and configurations:

- Microsoft Windows® XP SP1, SP2,
- Pentium III, 800 MHz, hard disk with 300 MB available, 128 MB RAM
- SVGA or higher definition monitor

(1) Minimum software version

(2) For the LXM 05A●●●●● servo drives, the minimum software version is 2.2.