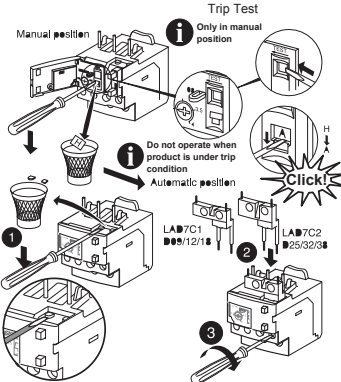


Schneider Electric Industries SAS  
35, rue Joseph Monier  
92506 Rueil Malmaison  
France



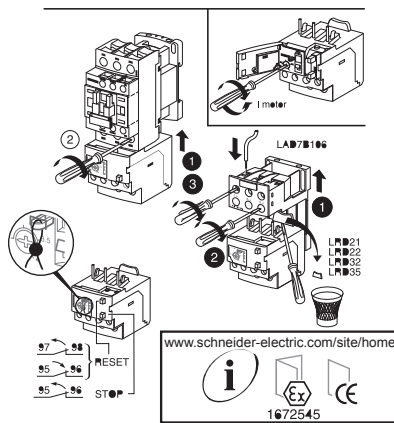
**⚠️ DANGER**  
HAZARD OF ELECTRIC SHOCK, EXPLOSION, OR ARC FLASH  
Disconnect all power before servicing equipment.  
Failure to follow these instructions will result in death or serious injury.

AWG	(mm <sup>2</sup> )	(mm)	(N.m)	(lb.in)
1...2.5	18...14	8	1.7	15
4...6	10...6	10	1.7	15
10...16	18...10	10	3/8	15
18...24	18...10	10	3/8	15

LRD01 to LRD21

AWG	(mm <sup>2</sup> )	(mm)	(N.m)	(lb.in)
1...2.5	18...14	8	1.7	15
4...6	10...6	10	2.5	20
10...16	18...10	10	3/8	20
18...24	18...10	10	3/8	20

LRD22 to LRD35



W9 1675200 0211 A08  
04 - 2016

**⚠️ WARNING**  
RISK OF FIRE OR ELECTRIC SHOCK FOR CONNECTOR WITH UL-HIGH-FREQUENCY SHORT CIRCUIT CURRENT RATINGS ONLY.  
The opening of the structural protective device may be an indication that a fault current has been detected.  
To reduce the risk of fire or electrical shock, current-carrying parts and other components of the device must be replaced by qualified personnel.  
Failure to follow these instructions can result in death, serious injury, or equipment damage.

AWG	(mm <sup>2</sup> )	(mm)	(N.m)	(lb.in)
1...2.5	18...14	8	1.7	15
4...6	10...6	10	1.7	15
10...16	18...10	10	3/8	15
18...24	18...10	10	3/8	15

LRD016 to LRD216

AWG	(mm <sup>2</sup> )	(mm)	(N.m)	(lb.in)
1...2.5	18...14	8	1.7	15
4...6	10...6	10	2.5	20
10...16	18...10	10	3/8	20
18...24	18...10	10	3/8	20

LRD226 to LRD356