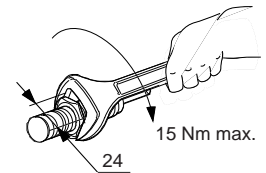
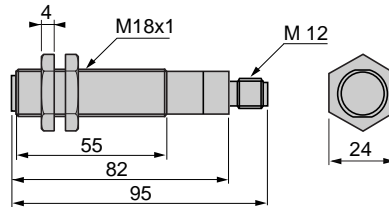
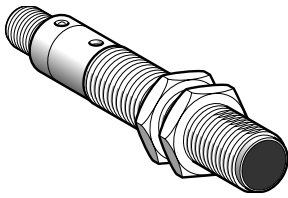




Osiris XU5-M18U1D



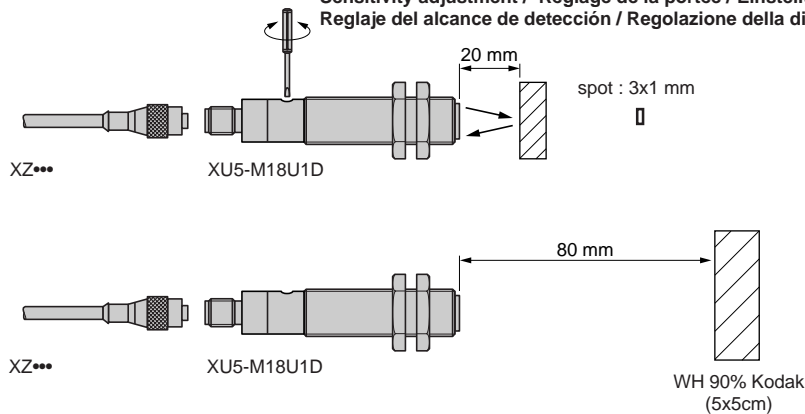
Luminescence detector / Détecteur de luminescence / Lumineszenzdetektor / Detector de luminiscencia / Sensore di luminescenza / Detector de luminescência



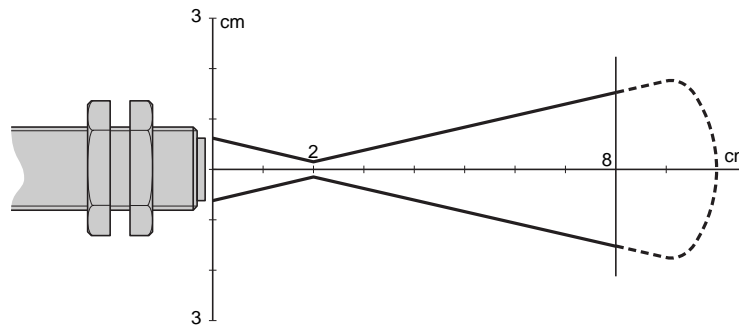
Max.tightening torque / Couple de serrage maxi. / Anzugsmoment maxi / Par de apriete máximo / Coppia di serraggio massima / Binário máximo de aperto

Mechanical installation / Mise en œuvre mécanique / Mechanische Installation / Instalación mecánica / Messa in opera meccanica / Instalação mecânica

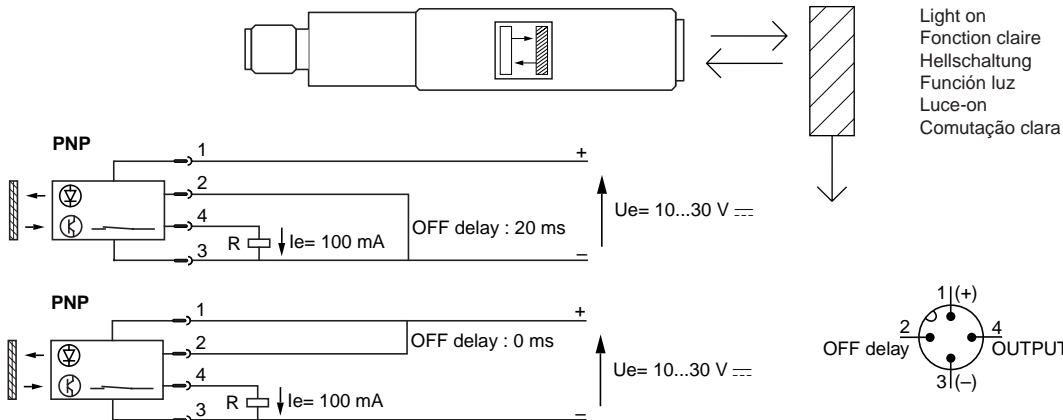
Sensitivity adjustment / Réglage de la portée / Einstellung des Nutzschaftabstand / Reglaje del alcance de detección / Regolazione della distanza / Regulação do alcance



Setting-up / Zone de détection / Erfassungsbereich / Zona de detección / Messa in opera / Curvas de detecção

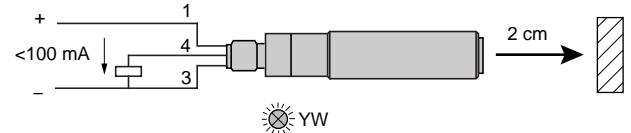
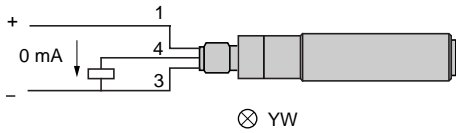


Electrical installation / Mise en œuvre électrique / Elektrische Installation / Instalación eléctrica / Messa in opera elettrica / Instalação eléctrica



W915604110111 A022/2

Indication / signalisation / Funktionsanzeige / Señalización / segnalazione / sinalização



YW

Yellow

Jaune

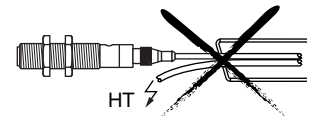
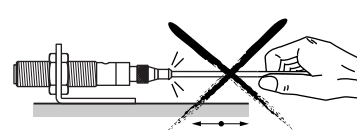
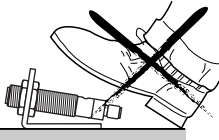
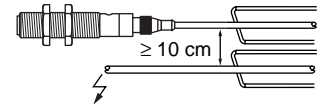
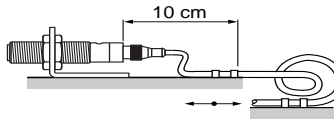
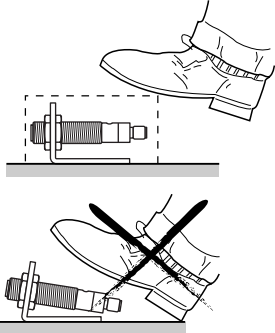
Gerb

Amarillo

Giallo

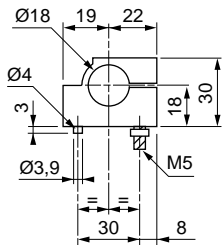
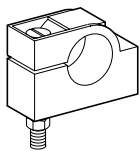
Amarelo

Installation precautions / Précautions de mise en œuvre / Vorsicht bei der Inbetriebnahme / Precauciones para la instalación / Consigli di messa in opera / Precaução de instalação

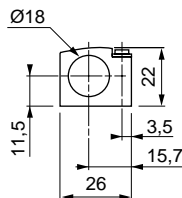
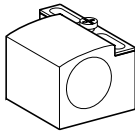


Fixing accessories / Accessoires de fixation / Befestigungszubehör / Accesorios de fijación / Accessori di fissaggio / Acessórios de fixação

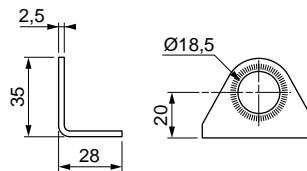
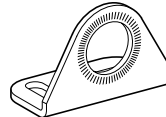
XSA-Z118



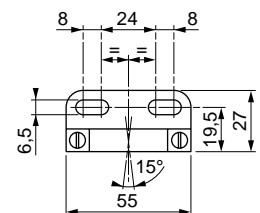
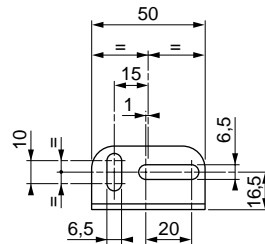
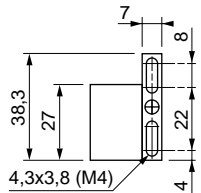
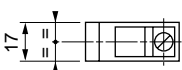
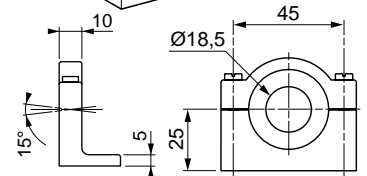
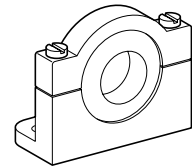
XSZ-B118



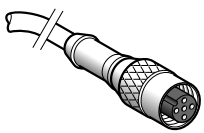
XUZ-A118



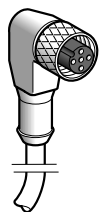
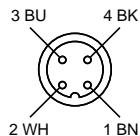
XUZ-A218



Machine cabling accessories / Constituants de câblage machines / Zuberh r f r Maschinen-Anschlu stechnik / Constituyentes de conexi nado / Accessori di cablaggio / Constituintes de cablagem

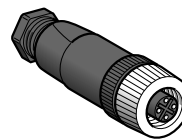


XZC-P1141L2 (2m)
XZC-P1141L5 (5m)
XZC-P1141L10 (10m)



XZC-P1241L2 (2m)
XZC-P1241L5 (5m)
XZC-P1241L10 (10m)

~~XZC-P1340L~~
~~XZC-P1440L~~



XZC-C12FDM40B metal (9)
XZC-C12FDP40B plastic (10)



XZC-C12FCM40B metal (1)
XZC-C12FCP40B plastic (2)

With screw terminals Number of wires and c.s.a. : 4 x 0,75 mm²
Raccordement par bornier Capacit  : 4 x 0,75 mm²
Anschlu  : Schraubanschlu sklemmen 4 x 0,75 mm²
Conexi n por bornas con tornillos, capacidad : 4 x 0,75 mm²
Collegamento su morsetti ra a vite, capacit  : 4 x 0,75 mm²
Liga o por terminais com parafusos, capacidade : 4 x 0,75 mm²

(1) m tal / metall / met lico / metallica / met lica
(2) plastique / Kunststoff / pl stico / plastica / pl stico

UL Listing and CE Certification :
Applicable on proximity switches bearing the UL and CSA marks only
Enclosure : Type 12,4X indoor use only.