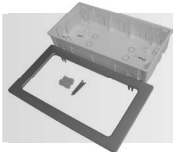


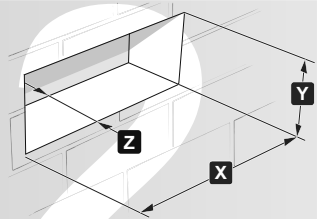
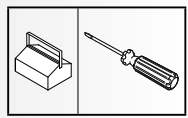
EXIWAY ONE / PLUS



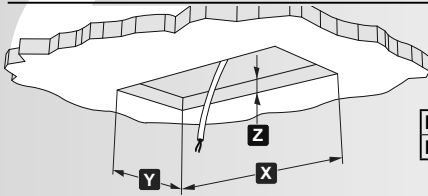
OVA53083 OVA53091
 OVA53084 OVA53092
 OVA53086 OVA53093
 OVA53087 OVA53094
 OVA53088 OVA53095
 OVA53089 OVA53096
 OVA53090 OVA53097

Schneider
Electric

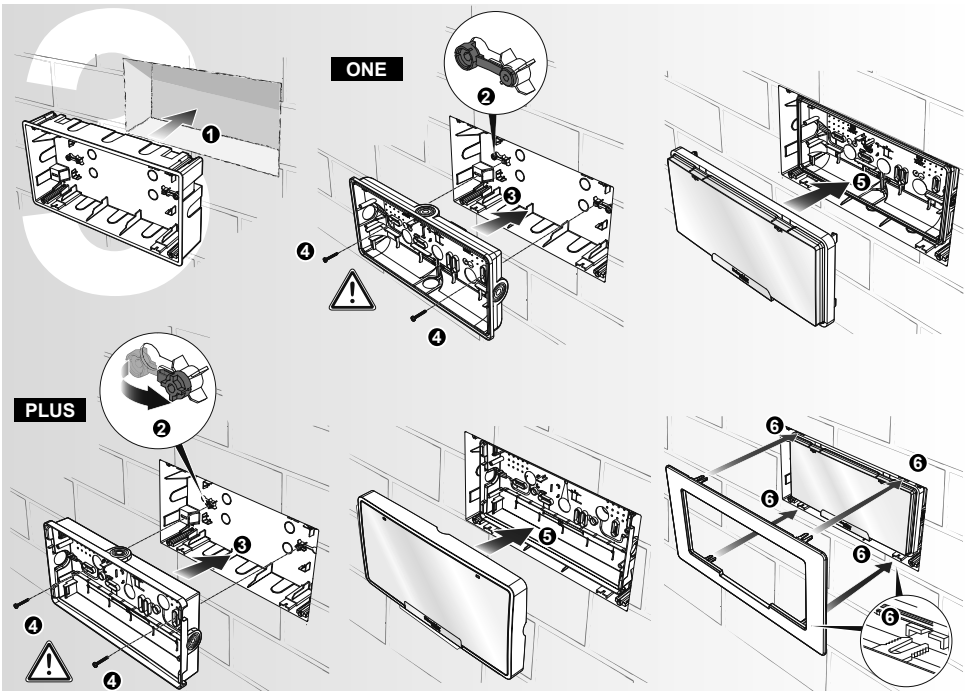
	x 1		
	x 4		
	x 4	Ø 3 mm x 50 mm	
	x 2	Ø 3,5 mm x 13 mm EXIWAY ONE	⚠
	x 2	Ø 3,5 mm x 19 mm EXIWAY PLUS	⚠
	x 1	OVA53086 OVA53089 OVA53092 OVA53095 OVA53087 OVA53090 OVA53093 OVA53096 OVA53088 OVA53091 OVA53094 OVA53097	

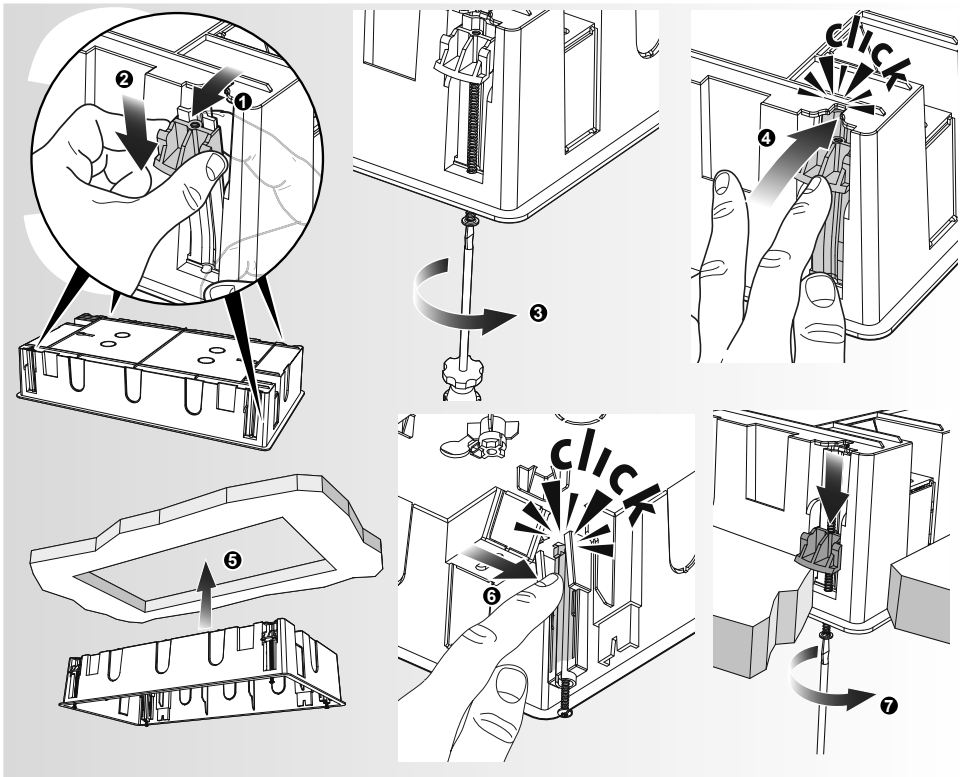


	X	Y	Z
EXIWAY ONE/PLUS 6-11W-LED	353	183	71
EXIWAY ONE/PLUS 8-18-24W	428	201	75



	X	Y	Z
EXIWAY ONE/PLUS 6-11W-LED	344	174	10-35
EXIWAY ONE/PLUS 8-18-24W	419	194	10-35





		EXIWAY ONE		EXIWAY PLUS	
		6 W 11 W	8 W 18 W 24 W	6 W 11 W LED	8 W 18 W 24 W
OVA53083		✓		✓	
OVA53084			✓		✓
	OVA53086	✓			
	OVA53087	✓			
	OVA53088	✓			
	OVA53089		✓		
	OVA53090		✓		
	OVA53091		✓		
	OVA53092			✓	
	OVA53093			✓	
	OVA53094			✓	
	OVA53095				✓
	OVA53096				✓
	OVA53097				✓

Schneider Electric Industries SAS
 35 Rue Joseph Monier
 92500 Rueil Malmaison (France)
 Tél : +33 (0)1 41 29 70 00
 Fax : +33 (0)1 41 29 71 00
<http://www.schneider-electric.com>

Questo prodotto deve essere installato, collegato ed utilizzato in conformità alle norme in vigore e/o norme di installazione.
 Per quanto riguarda le normative, specifiche e sviluppo di progetti vogliate di volta in volta chiedere sempre conferma delle informazioni riportate in questa pubblicazione.
 Este producto debe instalarse, conectarse y utilizarse de conformidad con las normas vigentes y/o las normas de instalación.
 Por lo que concierne a las normas, especificaciones y desarrollo de proyectos, se recomienda solicitar siempre una confirmación de las informaciones facilitadas en esta publicación.
 This product must be installed, connected up and used in accordance with current legislation and/or installation standards.
 The information regarding standards, specifications and design developments contained in this publication may not be up to date.
 Always contact us to obtain the latest information.