



Specifications

Construction:

Directional silicon steel is used for the flexible core. Secondary windings are of copper. Unit is encapsulated in silicone rubber which protects against moisture, dirt, oil and corona.

Insulation Level	0.72 KV. BIL 10 KV Full Wave
Frequency	50-400 Hz
Thermal Factor	1.25 at 30 °C.. 1.0 at 55 °C
Operating Temp Range	-45 °C to +55 °C
Altitude .	Up to 4000 Meters
Accuracy	200:5 thru 300:5 4 %
	400:5 thru 500:5 3 %
	600:5 thru 800:5 2 %
	1000:5 thru 6000:5 1 %
Secondary Leads	3.65 m with spade connectors
Color	Transformer (red) - Leads (yellow)
Remains flexible from -45° to +200 °C	



Round Split Core Design

Reference Number by secondary current		Maximum load (Amps)	Inside diameter (ID) mm - A	Burden Capacity (Ω)		Weight (kg)
5 Amps	1 Amp			5 Amp	1 Amp	
PCSPCTFCL50054	PCSPCTFCL50014	500	101.6	0.120	2.0	1.6
PCSPCTFCL100054	PCSPCTFCL100014	1000	101.6	0.200	10.0	1.6
PCSPCTFCL150054	PCSPCTFCL150014	1500	101.6	0.375	15.0	1.6
PCSPCTFCL160054	PCSPCTFCL160014	1600	101.6	0.375	15.0	1.6
PCSPCTFCL50056	PCSPCTFCL50016	500	152.4	0.120	2.0	1.9
PCSPCTFCL100056	PCSPCTFCL100016	1000	152.4	0.200	10.0	1.9
PCSPCTFCL120056	PCSPCTFCL120016	1200	152.4	0.200	15.0	1.9
PCSPCTFCL150056	PCSPCTFCL150016	1500	152.4	0.375	15.0	1.9
PCSPCTFCL200056	PCSPCTFCL200016	2000	152.4	1.000	18.0	1.9
PCSPCTFCL250056	PCSPCTFCL250016	2500	152.4	1.400	20.0	1.9
PCSPCTFCL300056	PCSPCTFCL300016	3000	152.4	1.800	20.0	1.9
PCSPCTFCL200058	PCSPCTFCL200018	2000	203.2	1.000	18.0	2.5
PCSPCTFCL250058	PCSPCTFCL250018	2500	203.2	1.400	20.0	2.5
PCSPCTFCL400058	PCSPCTFCL400018	4000	203.2	1.800	20.0	2.5
PCSPCTFCL500058	PCSPCTFCL500018	5000	203.2	1.800	20.0	2.5
PCSPCTFCL2500511	PCSPCTFCL2500111	2500	279.4	1.400	20.0	3.4

Note: Open split-core with a twisting motion only.



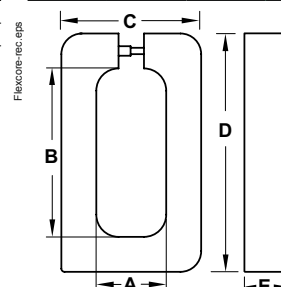
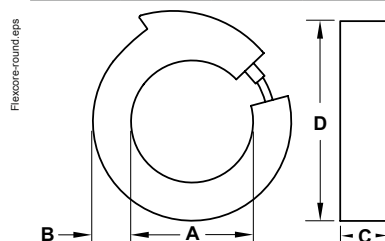
Rectangular Split Core Design

Reference Number by secondary current		Maximum load (Amps)	Inside diameter (ID) mm		Burden Capacity (Ω)		Weight (kg)
5 Amps	1 Amp		A	B	5 Amp	1 Amp	
PCSPCTFCL5005R	PCSPCTFCL5001R	500	69.8	168.2	0.12	2.0	1.9
PCSPCTFCL10005R	PCSPCTFCL10001R	1000	69.8	168.2	0.2	10.0	1.9
PCSPCTFCL12005R	PCSPCTFCL12001R	1200	69.8	168.2	0.2	15.0	1.9
PCSPCTFCL15005R	PCSPCTFCL15001R	1500	69.8	168.2	0.375	15.0	1.9
PCSPCTFCL16005R	PCSPCTFCL16001R	1600	69.8	168.2	0.375	15.0	1.9
PCSPCTFCL20005R	PCSPCTFCL20001R	2000	69.8	168.2	1	18.0	1.9
PCSPCTFCL25005R	PCSPCTFCL25001R	2500	69.8	168.2	1.4	20.0	1.9
PCSPCTFCL30005R	PCSPCTFCL30001R	3000	69.8	168.2	1.8	20.0	1.9
PCSPCTFCL25005R411	PCSPCTFCL25001R411	2500	168.3	279.4	1.4	20.0	2.8
PCSPCTFCL30005R411	PCSPCTFCL30001R411	3000	168.3	279.4	1.8	20.0	2.8
PCSPCTFCL40005R411	PCSPCTFCL40001R411	4000	168.3	279.4	1.8	20.0	2.8
PCSPCTFCL50005R411	PCSPCTFCL50001R411	5000	168.3	279.4	1.8	20.0	2.8

Dimensions

ID A	Dimensions in mm		
	B	C	D
101.6	31.75	38.1	165.1
152.4	31.75	38.1	215.9
203.2	31.75	38.1	266.7
279.4	31.75	38.1	342.9

ID A	B	Dimensions in mm		
		C	D	E
69.8	168.2	139.7	238	38.1
168.3	279.4	165.1	340	38.1





Specifications

Frequency	50-400 Hz
Class	0.6 kV, 10 kV BIL Full Wave
Flexible Leads	UL1015, 105 °C; CSA approved; 16 AWG (1.31 mm ²), 609.6 mm
Weight	Approximately 0.68 kg
Accuracy	1 %

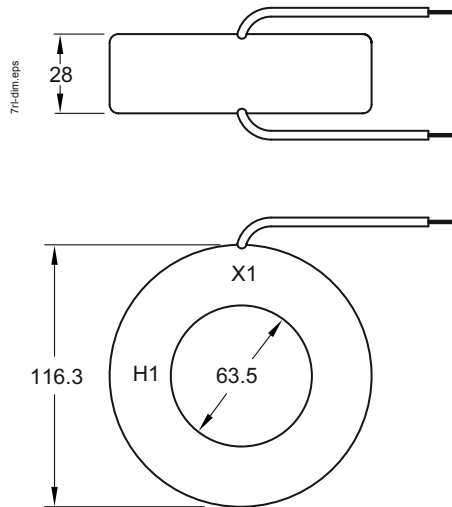
PCSPCT7RL.eps



Round Solid Core Design

Reference Number by secondary current		Maximum load (Amps)	Burden Capacity (Ω)	
5 Amps	1 Amp		5 Amp	1 Amp
PCSPCT7RL3015	PCSPCT7RL2011	200	0.5	5.0
PCSPCT7RL4015	PCSPCT7RL3011	300	0.5	5.0
PCSPCT7RL4015	PCSPCT7RL4011	400	0.6	7.5
PCSPCT7RL5015	PCSPCT7RL5011	500	1.0	10.0
PCSPCT7RL6015	PCSPCT7RL6011	600	1.2	12.5
PCSPCT7RL7515	PCSPCT7RL7511	750	1.2	12.5
PCSPCT7RL8015	PCSPCT7RL8011	800	1.4	20.0
PCSPCT7RL1025	PCSPCT7RL1021	1000	1.4	25.0
PCSPCT7RL1225	PCSPCT7RL1221	1200	1.4	15.0
PCSPCT7RL1525	PCSPCT7RL1521	1500	1.6	20.0
PCSPCT7RL1625	PCSPCT7RL1621	1600	2.0	25.0

Dimensions





Description

- The Reference 'PCSPCT190X...' is an auxiliary transformer for use in the secondary of main current transformers to change the ratio.
- The Reference 'PCSPCT190XSUM...' is a summing transformer for use when three or five current transformers need to be totalized.

Specifications

Frequency	50-400 Hz
Thermal Factor	1.33 at 30 °C, 1.0 at 55 °C
Secondary Terminals	Brass Studs No. 8-32
Weight	Approximately 1.8 kg
Insulation Class	0.6 kV, 10 kV BIL Full Wave

Note: Since these units are used in the secondary of another current transformer, they do not have a voltage rating. They are given a 2500 Volt - 60 Hz Hi Pot test. They are designed to be used on circuits not to exceed 600 volts-to-ground or between windings.



Auxiliary Transformers

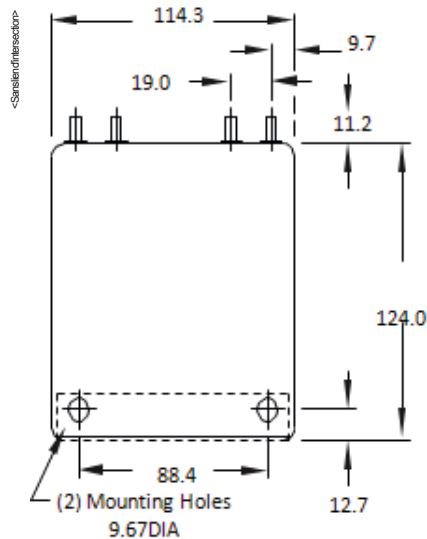
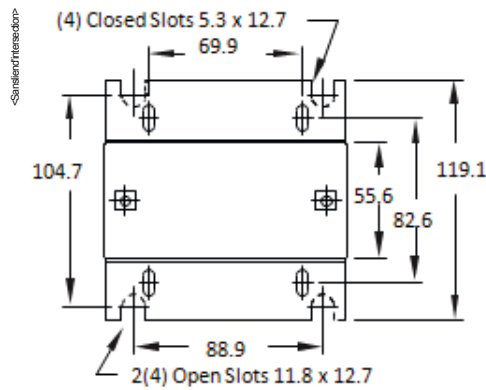
Reference number	Current ratio	Burden capacity (Ω)
PCSPCT190X1000	5:1	0.5
PCSPCT190X10005	1:5	0.5
PCSPCT190X5000	5:5	0.5

Summing Transformers ⁽¹⁾

Reference Number	Current ratio	Burden capacity (Ω)
PCSPCT190XSUM3	5+5+5:5	0.3
PCSPCT190XSUM5	5+5+5+5+5:5	0.3

⁽¹⁾ All current transformers to be totalized must have same ratio.

Dimensions (mm)





UL and cUL logos



LR19766



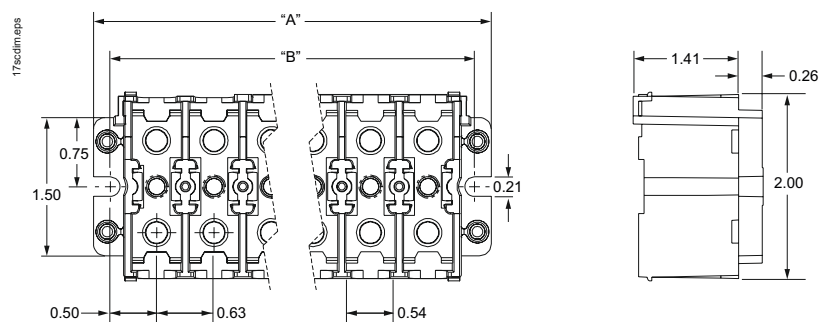
Specifications

Rating	600 V AC, 30 A
Thermal Rating	to 55°C
Humidity	to 95%
Class 1E qualified per IEEE 323-1974	
This device is not CE Certified	

Shorting Terminal Block

Reference number	Description
PCSPNHA3825	CT shorting switch 6 terminals dpst

Dimensions



- Torque wire terminals to 0.565 nm.
- Torque mounting screws to 2.26 nm.

Parallel Connection Cables

- Parallel connection cables - CAT5E type.
- Required to interconnect all units operating in parallel - need one per AccuSine+ unit.

Reference	Description	Length (m)
PCSPNHA38244	Paralleling cable CAT5E 3 m	3
PCSPNHA38245	Paralleling cable CAT5E 4.5 m	4.5
PCSPNHA38246	Paralleling cable CAT5E 6 m	6
PCSPNHA38247	Paralleling cable CAT5E 7.5 m	7.5
PCSPNHA38248	Paralleling cable CAT5E 9 m	9
PCSPNHA38249	Paralleling cable CAT5E 12 m	12
PCSPNHA38250	Paralleling cable CAT5E 15 m	15
PCSPNHA38251	Paralleling cable CAT5E 18 m	18
PCSPNHA38252	Paralleling cable CAT5E 22 m	22
PCSPNHA38253	Paralleling cable CAT5E 30 m	30



PCSPNHA3825



<Small>transsection>