



Multistandard protection for OEMs

Multi 9



schneider-electric.us/multi9

Life Is On

Schneider
Electric



Enhance Your Control Panel

The Multi 9™ line of modular DIN rail mounted devices offers superior performance with protection against electrical threats, including: short circuits, overloads, and earth leakages. This product range has been designed by Schneider Electric specifically for use by original equipment manufacturers (OEMs), meeting the major standards of industry applications with global availability. Offering a wide range of modular devices and accessories, the Multi 9 line provides the protection and signaling functions you need.

Renowned Quality

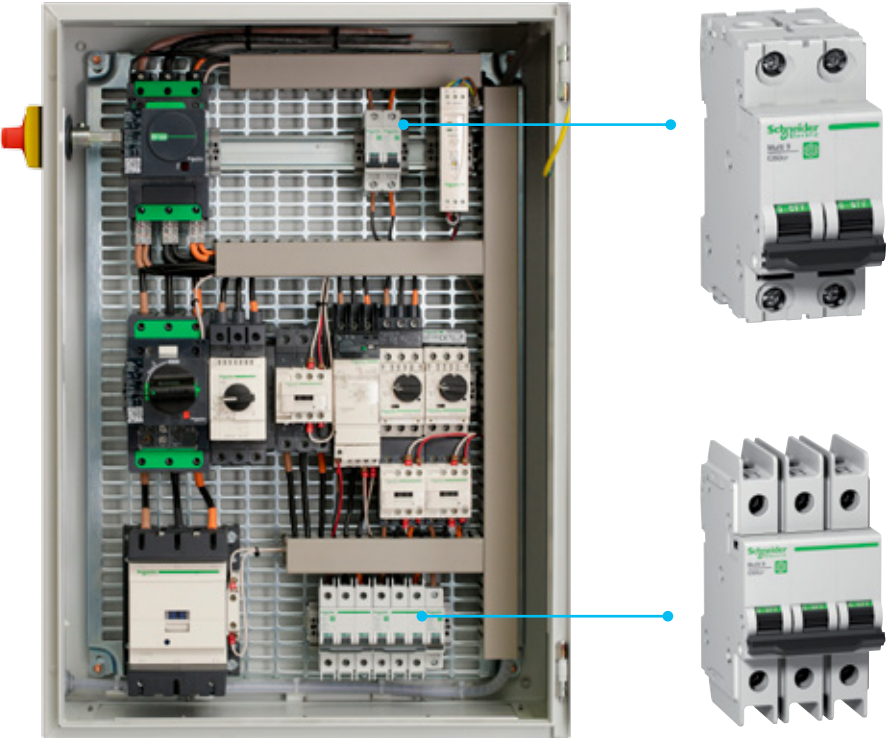
World leader's proven technology, experience, and support.

Available Worldwide

Sold under the same commercial reference, with easy, meaningful part numbering.

Optimized

Smaller footprint to reduce your panel size, cost-effective value from increased performance, and fewer commercial references.



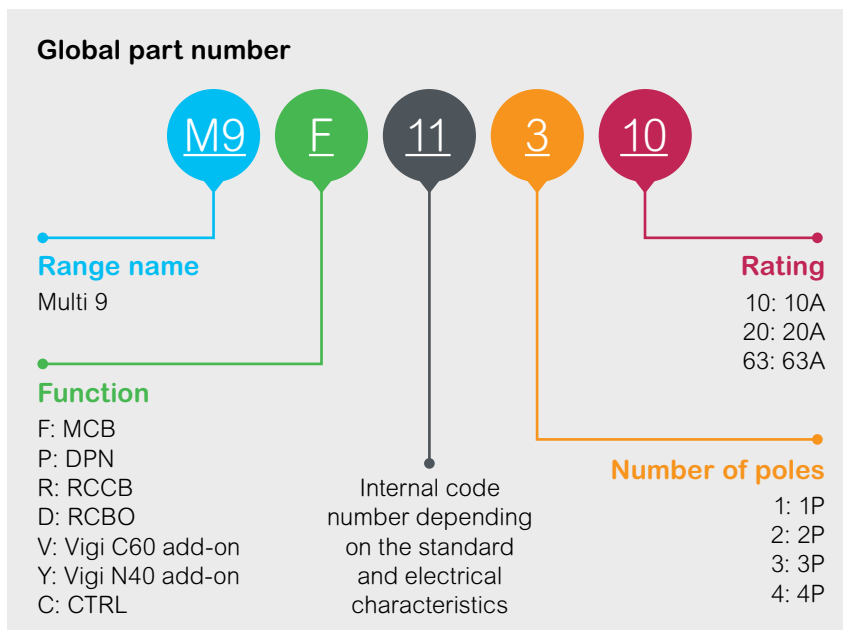


Optimized for Your Needs

Featuring new optimized designs, increased performances, smaller footprints and multiple choices of field-installable accessories, Multi 9 devices allow you to easily adapt to any configuration, any time. The range of devices fit perfectly in Schneider Electric™ solutions, allowing you to build your panel with the global specialist in energy management and automation.

Multi 9 Simplicity

The Multi 9 offer complies with UL, IEC, CCC and CSA and sets a new standard of reliability and high performance. Every product in the range has a single global part number. Simplicity starts with full availability. You order. We ship, worldwide.



Multi 9 Applications

Suitable for most industrial applications, the Multi 9 range is specifically designed for OEMs and control panel builders in the following segments:



HVAC



Elevator



Crane & Hoisting



Pumping



Genset



Semiconductor



Packaging




Conveying



Telecom

Range Highlights

C60BP	C60SP	C60H-DC	GFP	Auxiliary Contacts	Comb Busbars
					
Branch protection – UL489	Supplementary protection – UL1077	Supplementary protection – UL1077	Ground Fault protection – UL1053	Open/Closed indication	For C60BP and C60SP
Ratings up to 63A	Ratings up to 63A	Ratings up to 63A	Ratings up to 100A	Fault indication	Standard and Cutable versions
AIC up to 14kA	AIC up to 14kA	AIC up to 5kA	–	–	–
120V, 240V and 277/480V	120V, 240V and 277/480V	250VDC and 500VDC	120/240V and 277/480V	Shunt release	Multiple length options (6M, 12M...)
Z, C, D (=K) Trip curves	B, C, D (=K) Trip curves	B, C, D (=K) Trip curves	Sensitivity 26mA, 86mA, 260mA	Undervoltage release	Can be used with Aux. Contacts
1P-2P-3P	1P-2P-3P-4P	1-2P	2P-4P	–	–

Schneider Electric

800 Federal Street
Andover, MA USA
Phone: +1 978 794 0800

www.schneider-electric.us

July 2017
Document Number 1100BR1702

©2017 Schneider Electric. All Rights Reserved. Schneider Electric, Life is On Schneider Electric and Multi 9 are trademarks and the property of Schneider Electric SE, its subsidiaries and affiliated companies. All other trademarks are the property of their respective owners.

Life Is On

Schneider
Electric