

EasyLogic MP-C for Niagara Framework® Plant Room Controllers

I/A Series

Introduction

EasyLogic™ MP-C for Niagara Framework® is a multi-purpose, fully programmable, BACnet MS/TP based field controller. The MP-C models offer a flexible mix of I/O point types that suit a wide range of HVAC applications. MP-C can either be used as a standalone field controller or as part of an I/A Series Niagara BMS with a JACE or Niagara Supervisor as the parent server.

The MP-C has the following features:

- Native BACnet MS/TP support
- Full range of controller models
- Versatile onboard I/O point mix
- Advanced monitoring



- EasyLogic living space sensors
- Seamless integration with I/A Series Niagara software
- Upgrade with signed firmware

Native BACnet MS/TP support

The EasyLogic range of RP and MP controllers and RP-IO I/O modules natively communicate with JACE controllers/servers and field devices using the BACnet MS/TP protocol.

The RS-485 port with 3-pole screw terminal block is used for connection to the BACnet MS/TP network.

www.se.com/buildings

Life Is On

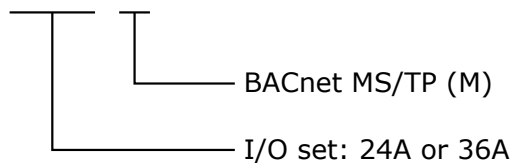
Schneider
Electric

EasyLogic MP-C for Niagara Framework®

Full range of controller models

The EasyLogic MP-C range of BACnet MS/TP based controllers includes two different models, which offer two different sets of I/O point types, named 24A and 36A. The two models support 24 VAC/DC power supply.

MP-C-24A-M



Models with a versatile mix of I/O points

The MP-C-24A and -36A models provide 24 or 36 I/O points, consisting of two different sets of I/O point types. The versatile mix of I/O point types match a wide variety of applications. The universal inputs/outputs are highly flexible and can be configured as either inputs or outputs.

I/O Point Types by MP-C Models

| I/O Point Types | MP-C-24A | MP-C-36A |
|-----------------------|----------|----------|
| Universal I/O Type Ub | 20 | 28 |
| Relay outputs Form A | 4 | 8 |

Configurations by I/O Point Types

| Configurations | Universal I/O Type Ub | Relay Outputs Form A |
|-------------------------------|-----------------------|----------------------|
| Digital inputs | yes | - |
| Counter inputs | yes | - |
| Supervised inputs | yes | - |
| Voltage inputs (0 to 10 VDC) | yes | - |
| Current inputs (0 to 20 mA) | yes | - |
| Temperature inputs | yes | - |
| Resistive inputs | yes | - |
| Voltage outputs (0 to 10 VDC) | yes | - |
| Digital outputs | - | yes |
| Digital pulsed outputs | - | yes |
| PWM outputs | - | yes |
| Tristate outputs | - | yes |
| Tristate pulsed outputs | - | yes |

EasyLogic MP-C for Niagara Framework®

Universal inputs/outputs

The universal inputs/outputs are ideal for any mix of temperature, pressure, flow, status points, and similar point types in a building control system.

As counter inputs, the universal inputs/outputs are commonly used in energy metering applications. As supervised inputs, they are used for security applications where it is critical to know whether or not a wire has been cut or shorted. These events provide a separate indication of alarms and events in the system.

For all analog inputs, maximum and minimum levels can be defined to automatically detect over-range and under-range values.

The universal inputs/outputs are capable of supporting analog outputs of type voltage outputs. Therefore, the universal inputs/outputs support a wide range of devices, such as actuators.

Only devices with safe extra low voltage equipment (SELV/PELV) inputs/outputs should be connected to the universal inputs/outputs.

Relay outputs

The relay outputs support digital Form A point types. The Form A relays are designed for direct load applications.

I/O expansion

For applications that require more I/O resources, the EasyLogic RP-IO modules provide a versatile mix of I/O points for any application. For more information, see the EasyLogic RP-IO for Niagara Framework Specification Sheet.

Advanced monitoring

The RP and MP controllers support local trends, schedules, and alarms, enabling local operation when the controller is offline or used in standalone applications.

The battery-free power backup of the memory helps prevent data loss and allows seamless and quick recovery after a power disruption.

EasyLogic living space sensors

The EasyLogic Sensor devices provide a cost-effective solution to measure, control, and communicate the temperature. The sensors are connected to analog inputs of the RP or MP controller. The EasyLogic Sensor devices are available in two models with different user interfaces, a blank cover or an LCD display with buttons for setpoint control. For more information, see the EasyLogic Sensors - Temperature Sensors – Analog - Specification Sheet.



EasyLogic Sensor devices

Seamless integration with I/A Series Niagara software

The power of the RP and MP controllers is fully realized when part of an I/A Series Niagara BMS, which provides the following benefits:

- Device discovery
- Full engineering capability from Workbench
- Graphical programming from a Wiresheet
- Support for custom Script programs
- Engineering efficiency

Device discovery

The enhanced Device Discovery in Workbench enables you to easily identify RP and MP controllers on a BACnet network and to associate the controllers with their parent server.

Full engineering capability from Workbench

Workbench provides a consistent user experience regardless of which I/A Series Niagara BMS server the user is logged on to. The user can log on to the parent Niagara BMS server to engineer, commission, supervise, and monitor the RP or MP controller and its I/O as well as its attached SpaceLogic or EasyLogic Sensor devices.

Graphical programming from a Wiresheet

The RP and MP controllers can be programmed directly using the familiar Wiresheet interface and an extensive palette of graphical program objects. Users can quickly drag, drop, and configure program objects to create full applications and download to the controllers.

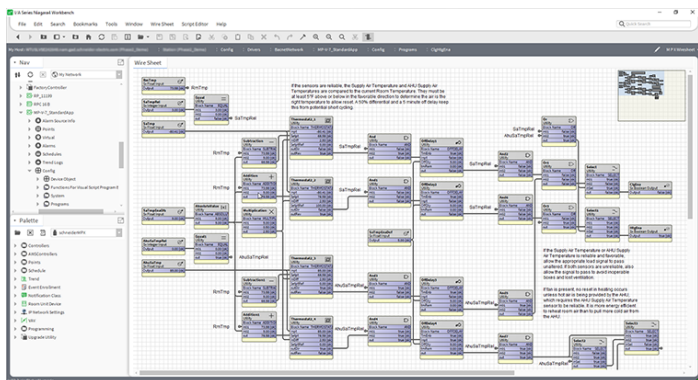
Support for custom Script programs

The RP and MP controllers also support custom Script programs. Users can write their own custom Script programs, compile, and download them to the controller. These custom Script programs will appear graphically on a Wiresheet where they can be bound with other objects.

EasyLogic MP-C for Niagara Framework®

Engineering efficiency

Workbench supports both online and offline engineering of RP and MP controllers. You can create and engineer controllers offline and then associate with an online controller when complete.



Workbench

Upgrade with signed firmware

Using digitally signed firmware provides more secure upgrading of the device. During an upgrade, the device verifies that the firmware is authentic and uncompromised. If the device detects discrepancies in the authenticity or integrity of the firmware, it will reject the upgrade. Once the device is upgraded with signed firmware, all upgrades thereafter must be with a signed firmware version.

Part Numbers for EasyLogic MP-C

| Product | Part number |
|------------|-----------------|
| MP-C-24A-M | SXWMPC24AM10001 |
| MP-C-36A-M | SXWMPC36AM10001 |

Part Numbers for MP-C Accessories

| Product | Part number |
|--|----------------|
| DIN-RAIL-CLIP, DIN-rail end clip package of 25 pieces | SXWDINEND10001 |

For more information on part numbers for Network Connectivity Accessories, see the Product Selection Guide - EcoStruxure Building.

Specifications

| EasyLogic MP-C for Niagara Framework® | |
|--|-----------------------------------|
| AC input | |
| Nominal voltage | 24 VAC |
| Operating voltage range | +/- 20 % |
| Frequency | 50/60 Hz |
| Maximum power consumption (MP-C-24A-M) | 10 VA |
| Maximum power consumption (MP-C-36A-M) | 12 VA |
| Power input protection | MOV suppression and internal fuse |

EasyLogic MP-C for Niagara Framework®

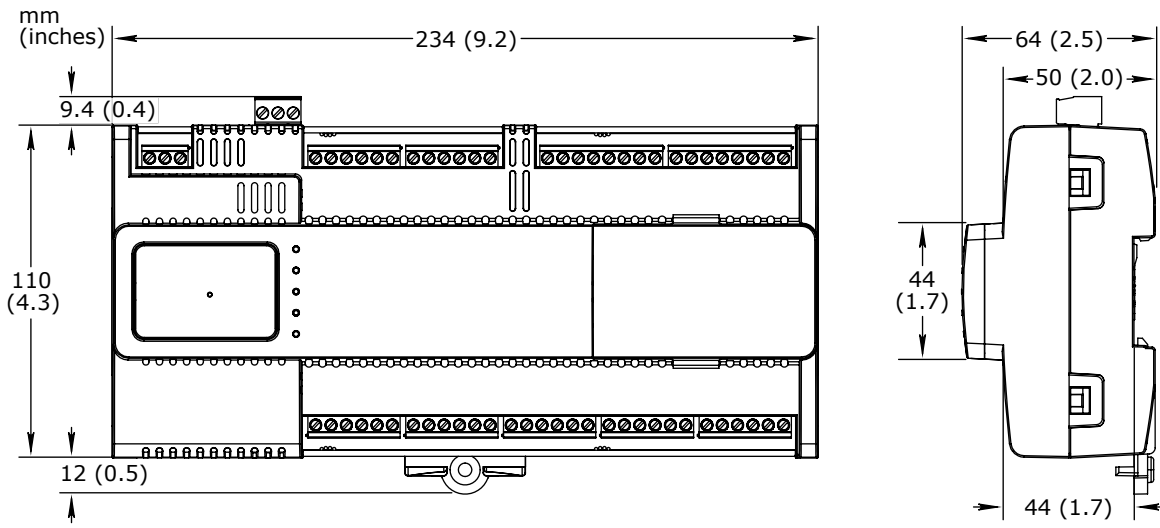
| DC input | |
|--|-----------------------------------|
| Nominal voltage | 24 to 30 VDC |
| Operating voltage range | 21 to 33 VDC |
| Maximum power consumption (MP-C-24A-M) | 5 W |
| Maximum power consumption (MP-C-36A-M) | 6 W |
| Power input protection | MOV suppression and internal fuse |

| Environment | |
|--------------------------------|--------------------------------|
| Ambient temperature, operating | 0 to 50 °C (32 to 122 °F) |
| Ambient temperature, storage | -40 to +70 °C (-40 to +158 °F) |
| Maximum humidity | 95 % RH non-condensing |

| Material | |
|---------------------------|----------|
| Plastic flame rating | UL94 V-0 |
| Ingress protection rating | IP 20 |

Mechanical

Dimensions 234 W x 110 H x 64 D mm (9.2 W x 4.3 H x 2.5 D in.)



| | |
|--------------------|---------------------|
| Weight, MP-C-24A-M | 0.446 kg (0.983 lb) |
| Weight, MP-C-36A-M | 0.488 kg (1.076 lb) |

| | |
|--|--|
| Recommended installation | DIN rail or flat surface in a cabinet ^a |
| a) It is recommended to install the device in an enclosure (cabinet), unless local regulations allow an exception. | |

| | |
|-----------------|--|
| Terminal blocks | Power and I/O: Fixed BACnet MS/TP communications: Removable |
|-----------------|--|

| Compatibility | |
|-----------------------------|------------------------|
| I/A Series Niagara software | version 4.10 and later |

EasyLogic MP-C for Niagara Framework®

Agency compliances

| | |
|------------------|--|
| Emission | RCM; BS/EN 61000-6-3; BS/EN IEC 63044-5-2; FCC Part 15, Sub-part B, Class B |
| Immunity | BS/EN 61000-6-2; BS/EN IEC 63044-5-3 |
| Safety standards | BS/EN 60730-1; BS/EN 60730-2-11; BS/EN IEC 63044-3; UL 916 C-UL US Listed ^a |

a) The MP-C-24A and -36A models are marked "Open Energy Management Equipment".

Real-time clock

| | |
|-------------------------------|-----------------------|
| Accuracy, at 25 °C (77 °F) | +/-1 minute per month |
| Backup time, at 25 °C (77 °F) | 7 days minimum |

Communication ports

| | |
|-------------|--|
| RS-485 port | RS-485 (3-pole screw terminal block) Transient voltage suppressors on communication signals |
|-------------|--|

RS-485 transceiver characteristics

| | |
|---------------------------------|--------------------------|
| Transceiver type | Failsafe Non-isolated |
| External biasing | None required |
| Total Unit Load (UL) per device | Maximum 0.5 UL |

Communications

| | |
|--------|---|
| BACnet | BACnet MS/TP, maximum bus length: 1200 m (4000 ft), maximum baud rate: 76800 BTL B-AAC (BACnet Advanced Application Controller) ^a |
|--------|---|

a) See the BTL Product Catalog for up-to-date details on BTL listed firmware revisions on BACnet International's home page.

CPU

| | |
|------------------|--|
| Frequency | 500 MHz |
| Type | ARM Cortex-A7 dual-core |
| DDR3 SDRAM | 128 MB |
| NOR flash memory | 32 MB |
| Memory backup | 128 kB ^a , FRAM, non-volatile |

a) MP-C-24A-M and MP-C-36A-M with hardware version earlier than 03/02 have a FRAM memory with a size of 8 kB. For these hardware versions, the use of Script programs is recommended to save FRAM memory space.

Universal inputs/outputs

| | |
|-----------------------------------|---|
| Channels, MP-C-24A-M | 20 Ub, Ub1 to Ub20 |
| Channels, MP-C-36A-M | 28 Ub, Ub1 to Ub28 |
| Absolute maximum ratings | -0.5 to +24 VDC |
| A/D converter resolution | 16 bits |
| Universal input/output protection | Transient voltage suppressor on each universal input/output |

Digital inputs

| | |
|-------|---|
| Range | Dry contact switch closure or open collector/open drain, 24 VDC, typical wetting current 2.4 mA |
|-------|---|

EasyLogic MP-C for Niagara Framework®

| | |
|--|---|
| Minimum pulse width | 150 ms |
| Counter inputs | |
| Range | Dry contact switch closure or open collector/open drain, 24 VDC, typical wetting current 2.4 mA |
| Minimum pulse width | 20 ms |
| Maximum frequency | 25 Hz |
| Supervised inputs | |
| 5 V circuit, 1 or 2 resistors Monitored switch combinations | Series only, parallel only, and series and parallel |
| Resistor range For a 2-resistor configuration, each resistor must have the same value +/- 5 % | 1 to 10 kohm |
| Voltage inputs | |
| Range | 0 to 10 VDC |
| Accuracy | +/- (7 mV + 0.2 % of reading) |
| Resolution | 1.0 mV |
| Impedance | 100 kohm |
| Current inputs | |
| Range | 0 to 20 mA |
| Accuracy | +/- (0.01 mA + 0.4 % of reading) |
| Resolution | 1 µA |
| Impedance | 47 ohm |
| Resistive inputs | |
| 10 ohm to 10 kohm accuracy R = Resistance in ohm | +/- (7 + 4 x 10 ⁻³ x R) ohm |
| 10 kohm to 60 kohm accuracy R = Resistance in ohm | +/- (4 x 10 ⁻³ x R + 7 x 10 ⁻⁸ x R ²) ohm |
| Temperature inputs (thermistors) | |
| Range | -50 to +150 °C (-58 to +302 °F) |
| Supported thermistors | |
| Honeywell | 20 kohm |
| Type I (Continuum) | 10 kohm |
| Type II (I/NET) | 10 kohm |
| Type III (Satchwell) | 10 kohm |
| Type IV (FD) | 10 kohm |
| Type V (FD w/ 11k shunt) | Linearized 10 kohm |

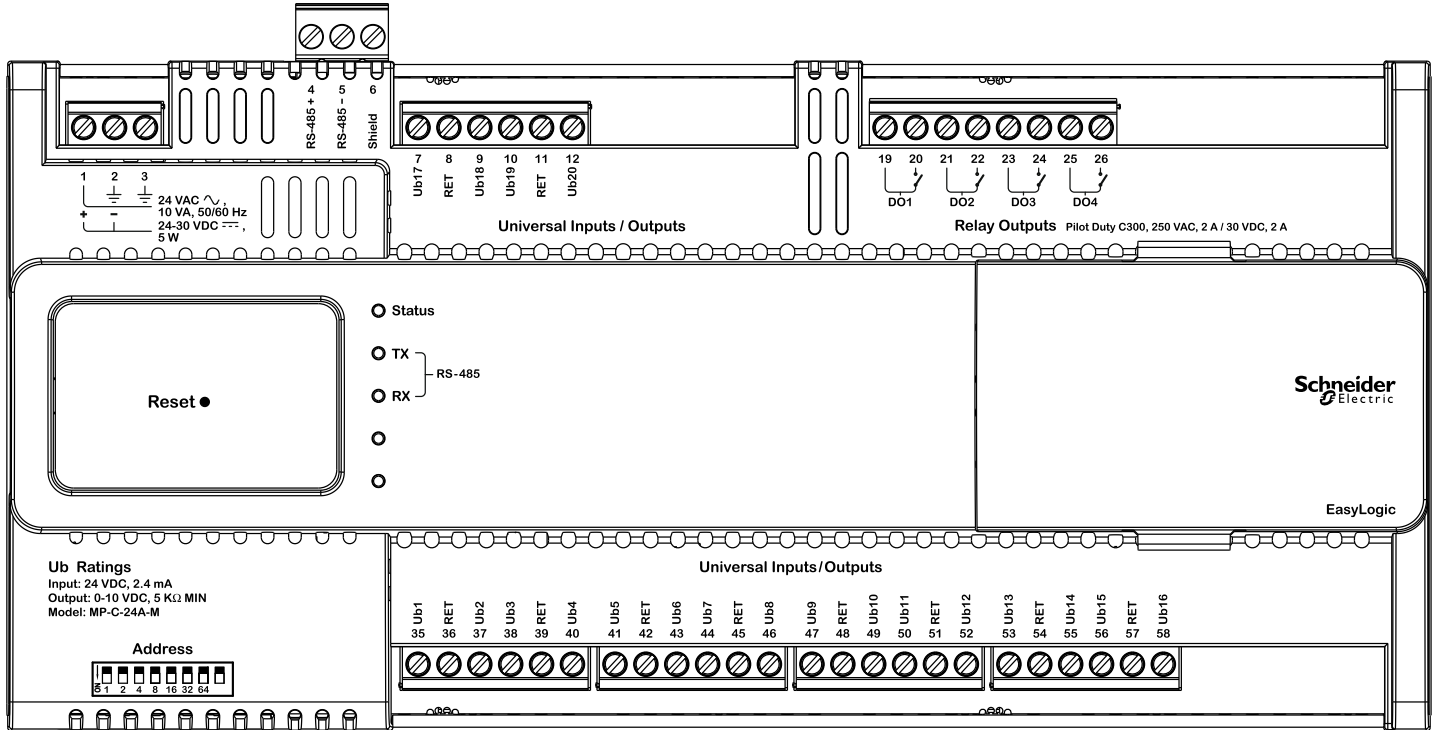
EasyLogic MP-C for Niagara Framework®

| | |
|------------------------------------|---|
| Satchwell D?T | Linearized 10 kohm |
| Johnson Controls | 2.2 kohm |
| Xenta | 1.8 kohm |
| Balco | 1 kohm |
| Measurement accuracy | |
| 20 kohm | -50 to -30 °C: +/-1.5 °C (-58 to -22 °F: +/-2.7 °F) -30 to 0 °C: +/-0.5 °C (-22 to +32 °F: +/-0.9 °F) 0 to 100 °C: +/-0.2 °C (32 to 212 °F: +/-0.4 °F) 100 to 150 °C: +/-0.5 °C (212 to 302 °F: +/-0.9 °F) |
| 10 kohm, 2.2 kohm, and 1.8 kohm | -50 to -30 °C: +/-0.75 °C (-58 to -22 °F: +/-1.35 °F) -30 to +100 °C: +/-0.2 °C (-22 to +212 °F: +/-0.4 °F) 100 to 150 °C: +/-0.5 °C (212 to 302 °F: +/-0.9 °F) |
| Linearized 10 kohm | -50 to -30 °C: +/-2.0 °C (-58 to -22 °F: +/-3.6 °F) -30 to 0 °C: +/-0.75 °C (-22 to +32 °F: +/-1.35 °F) 0 to 100 °C: +/-0.2 °C (32 to 212 °F: +/-0.4 °F) 100 to 150 °C: +/-0.5 °C (212 to 302 °F: +/-0.9 °F) |
| 1 kohm | -50 to +150 °C: +/-1.0 °C (-58 to +302° F: +/-1.8 °F) |
| Voltage outputs | |
| Range | 0 to 10 VDC |
| Accuracy | +/-60 mV |
| Resolution | 10 mV |
| Minimum load resistance | 5 kohm |
| Load range | -1 to +2 mA |
| Relay outputs, DO | |
| Channels, MP-C-24A-M | 4, DO1 to DO4 |
| Channels, MP-C-36A-M | 8, DO1 to DO8 |
| Contact rating | 250 VAC/30 VDC, 2 A, Pilot Duty (C300) |
| Switch type | Form A Relay Single Pole Single Throw Normally Open |
| Isolation contact to system ground | 3000 VAC |
| Cycle life (Resistive load) | At least 100,000 cycles |
| Minimum pulse width | 100 ms |

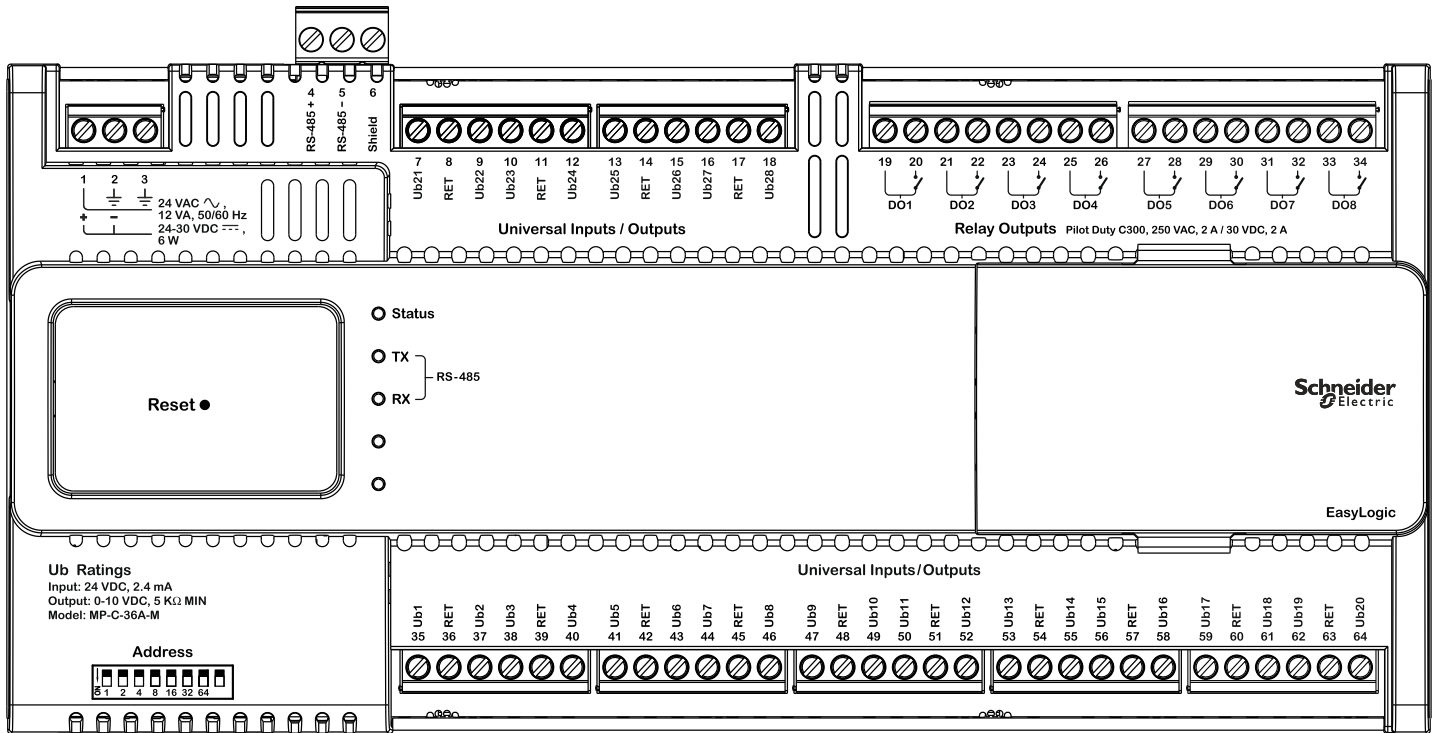
Terminals

For more information on wiring, see the SpaceLogic and EasyLogic - Hardware Installation System Guide.

EasyLogic MP-C for Niagara Framework®



MP-C-24A-M model



MP-C-36A-M model

EasyLogic MP-C for Niagara Framework®

Regulatory Notices



Federal Communications Commission

FCC Rules and Regulations CFR 47, Part 15, Class B

This device complies with part 15 of the FCC Rules. Operation is subject to the following two conditions: (1) This device may not cause harmful interference. (2) This device must accept any interference received, including interference that may cause undesired operation.

Industry Canada

This Class B digital apparatus complies with Canadian ICES-003.

Cet appareil numérique de la classe B est conforme à la norme NMB-003 du Canada.



Regulatory Compliance Mark (RCM) - Australian Communications and Media Authority (ACMA)

This equipment complies with the requirements of the relevant ACMA standards made under the Radiocommunications Act 1992 and the Telecommunications Act 1997. These standards are referenced in notices made under section 182 of the Radiocommunications Act and 407 of the Telecommunications Act.



CE - Compliance to European Union (EU)

2014/30/EU Electromagnetic Compatibility Directive

2014/35/EU Low Voltage Directive

2011/65/EU Restriction of Hazardous Substances (RoHS) Directive

2015/863/EU amending Annex II to Directive 2011/65/EU

This equipment complies with the rules, of the Official Journal of the European Union, for governing the Self Declaration of the CE Marking for the European Union as specified in the above directive(s).



WEEE - Directive of the European Union (EU)

This equipment and its packaging carry the waste of electrical and electronic equipment (WEEE) label, in compliance with European Union (EU) Directive 2012/19/EU, governing the disposal and recycling of electrical and electronic equipment in the European community.



UK Conformity Assessed

S.I. 2016/1091 - Electromagnetic Compatibility Regulations 2016

S.I. 2016/1101 - Electrical Equipment (Safety) Regulations 2016

S.I. 2012/3032 - Restriction of the Use of Certain Hazardous Substances in Electrical and Electronic Equipment Regulations 2012

S.I. 2013/3113 - Waste Electrical and Electronic Equipment Regulations 2013

This equipment complies with the rules, of the UK regulations, for governing the UKCA Marking for the United Kingdom specified in the above directive(s).



UL 916 Listed products for the United States and Canada, Open Class Energy Management Equipment. UL file E80146.

www.se.com/buildings

Life Is On

Schneider
Electric