

Technical Publications Support Tools

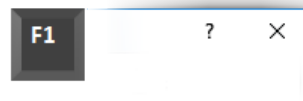
EcoStruxure™ Building



EcoStruxure Building Management WebHelp

WebHelp is a web-based help system for the EcoStruxure Building Operation software and SpaceLogic devices, the software and hardware that powers the EcoStruxure BMS.

By pressing F1 or clicking a Help button in the EcoStruxure Building Operation software your web browser opens WebHelp with the latest, up-to-date, technical documentation.



Help in EcoStruxure Building Operation software

Some EcoStruxure Building Operation software products give you context-sensitive help by opening a WebHelp page that explains the view or dialog box you have in focus. Some programs open up an overview page. From these pages, you can follow the links to get more detailed information.

WebHelp contains all the technical information that is in the guides, specification sheets, and installation sheets.

Technical Publications

Internet Access

When the computer running the EcoStruxure Building Operation software is not connected to the internet, a PDF file of the System Reference Guide is displayed instead of WebHelp. You can search the System Reference Guide in your PDF viewer.

Tip: Use your smartphone or tablet as a Wi-Fi hotspot and connect the computer to the internet to get access to the information on WebHelp.

The WebHelp site

One of the advantages with WebHelp is that you can reach Help without having the EcoStruxure Building Operation software installed on your computer. By entering the URL address <https://ecostruxure-building-help.se.com/bms> you can access WebHelp from any computer, smartphone, or tablet connected to the internet.

Finding information

The easiest way to find information on WebHelp is to search for it.



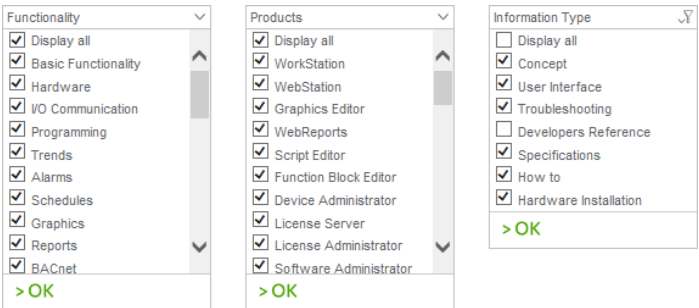
Home page search

All technical information is gathered in one place, so you do not need to know which guide, specification sheet, or installation sheet the information is in.

Filtering the information




To narrow down the search results, you can use these filters:

- Product
- Functionality
- Information type



Search filters

Information Types

Information Type	Description
 Concept	Descriptive information about how something works, acts, and its purpose.
 User Interface	Screen capture of the user interface and a table that describes each of the components of the user interface, such as properties or buttons.
 Troubleshooting	Solutions to problems that may occur in your EcoStruxure BMS.
 Developers Reference	Technical reference information intended for developers and support staff.
 Specifications	Product features and technical specifications.

Technical Publications

Continued


Information Type	Description
 How-to	Step-by-step procedure that describes how to perform tasks.
 Hardware Installation	Information about how to install the SpaceLogic devices and technical specifications needed during the installation.

Browse

Sometimes it is hard to know what terms are used in the technical documentation and thus hard to know what to search for. You can browse the WebHelp content using the Product or Functionality categories. From the Overview pages, you can link to more specific information. All the topics are related to one another using the See also links, so you can move quickly from one topic to another.

Product versions

On WebHelp, you can see information for all released versions of the EcoStruxure Building Operation software and the SpaceLogic devices. Use the Product version drop-down menu to jump between versions. If you are entering WebHelp from the EcoStruxure Building Operation software by pressing F1 or clicking a Help button, WebHelp automatically detects the version of the software installed and shows information for that version. Each page on WebHelp displays the versions of the product the information is valid for.

**Specifications**
Products: DO-FA-12 Functionalities: I/O Communication, Engineering, Hardware
Product version: 1.6, 1.7, 1.8, 1.9

Page header with version information

Privileged information

WebHelp is available to all people connected to the internet, but some information on the site is only for Schneider Electric partners and employees. To gain access to information that is privileged, you have to be logged on.

Subscriptions

As an EcoStruxure Building Operation user, you can register an account and log on to WebHelp and subscribe to information updates.

Rating

You can rate the information on WebHelp by clicking one of the stars in the upper right corner of a topic. When you click on a star, you get the option to provide feedback on the information. If you find information you think is incorrect, you can let us know by using the rating functionality.

Click to rate and give feedback ★★★★★

Give feedback on this topic. Please use English.

Characters left: 255

Send

Close

The rating feature

Community Content

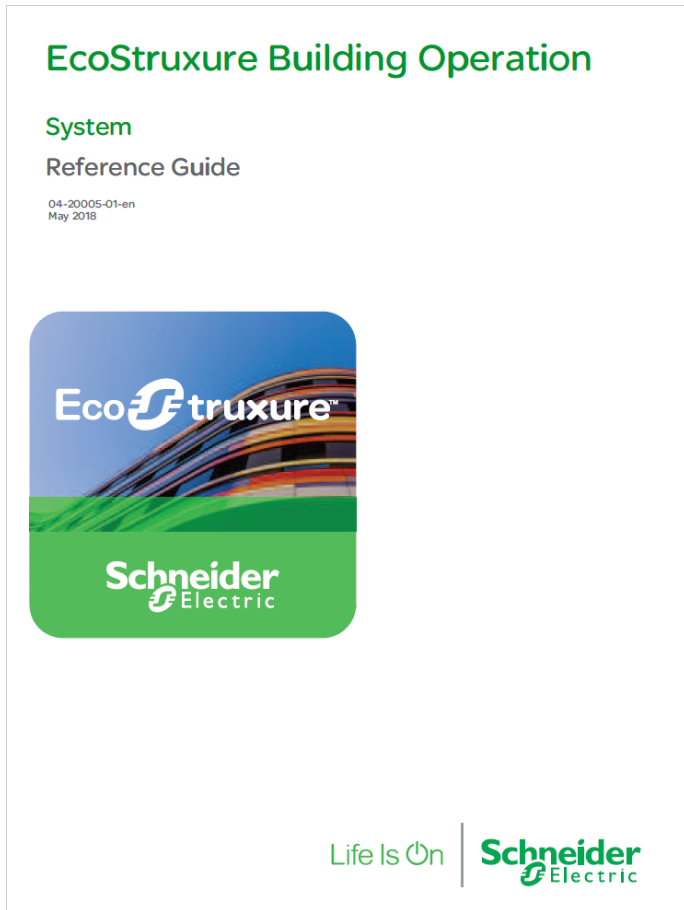
At the end of each page on WebHelp, you find the Community Content section. This section displays information from other employees, partners, and EcoStruxure Building Operation users. The comments are about the functionality described on the page, such as tips and additional information. You need to be logged on to be able to contribute to the Community Content.

PDF format

All the information on WebHelp is also available in PDF format on the Exchange Extranet. Search for the name of the guide, specification sheet, or installation sheet. You can narrow the results by setting the Offer filter to EcoStruxure Building and the Language filter to the appropriate language.

Technical Publications

Reference Guides



Example of a guide

System Reference Guide

This guide contains information on how to set up features of an EcoStruxure BMS, such as user accounts and alarms. The information is targeted towards customers or Schneider Electric partners or employees who are administrating a site. This guide does not include information about hardware.

The information in this guide is available for everyone on WebHelp.

Technical Reference Guide

This guide contains information on how to configure an EcoStruxure BMS, including information on protocols, devices, and external editors. The information is targeted towards Schneider Electric partners or employees who are engineering a site. This guide does not include information about hardware with the exception of Troubleshooting and Deep Technical information.

The information in this guide is privileged information on WebHelp.

Hardware Reference Guide

This guide contains information on the SpaceLogic devices, such as wiring, in/output characteristics, and RS-485 communications. The information is targeted towards Schneider Electric partners or employees and/or cabinet designers.

The information in this guide is available for everyone on WebHelp.

Connected Room Solution Reference Guide

This guide contains information on the Connected Room Solution, including the framework for developing control applications for lights and blinds, the segment concept for zoning and rezoning of a building, the preconfigured applications, and guidance on how to select RP controller expansion modules as well as light and blind equipment. The information is targeted towards Schneider Electric partners or employees who are engineering a site.

The information in this guide is privileged information on WebHelp.

RP-C-EXT-KNX Reference Guide

This guide contains information on how to configure the KNX Modbus gateway RP-C-EXT-KNX, including information on the hardware, the Engineering Tool Software (ETS) database, and the import tool of EcoStruxure Building Operation WorkStation. The information is targeted towards Schneider Electric partners or employees who are engineering a site.

The information in this guide is privileged information on WebHelp.

Remote Control Reference Guide

This guide contains information on the RP-C-RC-BLE remote control and how to pair this device with the RP-C-EXT-MS-BLE multi-sensor and how to use the device to control the room comfort settings. The information is targeted towards customers or Schneider Electric partners or employees who are administrating a site.

The information in this guide is available for everyone on WebHelp.

System Upgrade Reference Guide

This guide contains information on how to upgrade an EcoStruxure BMS. The information is targeted towards Schneider Electric partners or employees upgrading a site.

The information in this guide is privileged information on WebHelp.

IT Reference Guide

This guide contains information on how to administer an EcoStruxure BMS from an IT perspective, such as installation,

Technical Publications

licenses, and backups. The information is targeted towards the customers' IT departments. The information in this guide is also in the System Reference Guide.

The information in this guide is available for everyone on WebHelp.

Commission Reference Guide

This guide provides information about the Commission mobile application and its use for I/O checkout, air flow balancing, and other operations aimed at commissioning and maintaining a building system that contains SpaceLogic BACnet/IP devices. The information is targeted towards Schneider Electric partners or employees who are commissioning and maintaining a site using the Commission mobile application.

The information in this guide is privileged information on WebHelp.

Project Configuration Reference Guide

This guide provides information about Project Configuration Tool, such as project configuration, virtual EcoStruxure BMS server configuration, and deployment. The information is targeted towards Schneider Electric partners or employees who are engineering a site offline using Project Configuration Tool.

The information in this guide is privileged information on WebHelp.

TAC Vista Conversion Guide

This guide provides information about the conversion of a TAC Vista system into an EcoStruxure BMS. The information is targeted towards Schneider Electric partners or employees who are performing a conversion from a TAC Vista system using TAC Vista Conversion Tool.

The information in this guide is privileged information on WebHelp.

Operator Display Reference Guide

This guide provides information about the administration and configuration of the Operator Display touch-screen. The information is targeted towards customers or Schneider Electric partners or employees who perform common and administrative tasks using the Operator Display user interface.

The information in this guide is available for everyone on WebHelp.

Operating Guides

WorkStation Operating Guide

This guide contains information on WorkStation, such as logging on, monitoring alarms, and editing schedules. The information is targeted towards customers operating a site.

The information in this guide is available for everyone on WebHelp.

WebStation Operating Guide

This guide contains information on WebStation, such as logging on, monitoring alarms, and editing schedules. The information is targeted towards customers operating a site.

The information in this guide is available for everyone on WebHelp.

Remote Control Operating Guide

This guide contains information on the RP-C-RC-BLE remote control, such as adjusting the setpoint for room temperature, fan speed, light level, position and rotation of the blinds, or selecting from a set of predefined scenes. The information is targeted towards building occupants who want to control the comfort level of a room, open space, or functional zone.

The information in this guide is available for everyone on WebHelp.

Operator Display Operating Guide

This guide provides information on the Operator Display touch-screen, such as logging on, monitoring alarms, and editing schedules. The information is targeted towards system integrators and service engineers, as well as non-technical users (notably facility managers and janitors) using the Operator Display user interface.

The information in this guide is available for everyone on WebHelp.

Difference Guides

Function Block Editor and Menta Editor Difference Guide

This guide describes the differences between using the Function Block Editor and the Menta Editor. The information is targeted towards Schneider Electric partners or employees who are familiar with Menta Editor. The Function Block Editor information is also available in the Technical Reference Guide.

The information in this guide is privileged information on WebHelp.

Plain English and Script Difference Guide

This guide describes the differences between using the Plain English Editor and the Script Editor. The information is targeted towards Schneider Electric partners or employees who are familiar with Plain English. The Script information is also available in the Technical Reference Guide.

The information in this guide is privileged information on WebHelp.

Technical Publications

Guidelines and Planning Guides

Architectural Guidelines

This guide contains information about important considerations that need to be taken when designing an EcoStruxure BMS, such as maximum number of devices per EcoStruxure BMS server. This guide also includes reference architectures and planning guidance for the secure deployment and configuration of an EcoStruxure BMS. The information is targeted towards Schneider Electric partners or employees who are planning a site.

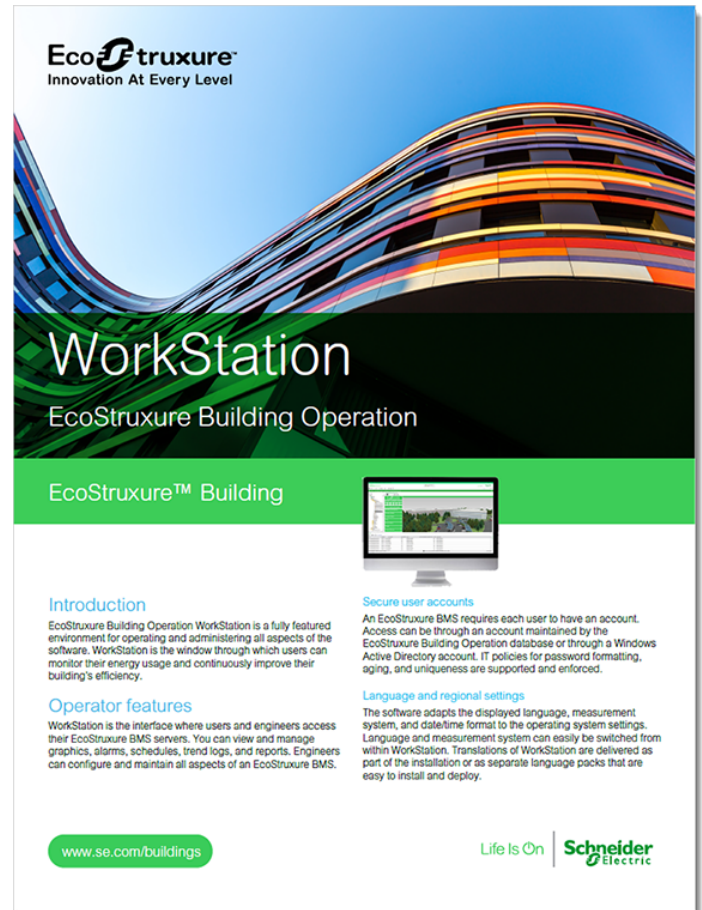
The information in this guide is privileged information on WebHelp.

Information Technology System Planning Guide

This guide contains information on how to provide our customers an IT-friendly and secure EcoStruxure BMS, such as port numbers and software requirements. The information is targeted towards IT professionals who need to review the system design and provide support for the system installation.

The information in this guide is privileged information on WebHelp.

Specification Sheets



Example of a specification sheet

Specification sheets contain information on product features and technical specifications. There is typically one specification sheet for each product:

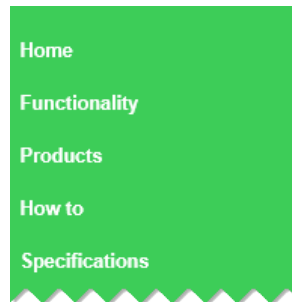
- WebStation
- WorkStation
- Operator Display
- Advanced Display
- Engage
- Enterprise Central
- Enterprise Server
- Compliance Pack
- Sustainability Pack
- Edge Server
- AS-P
- AS-B
- MP-C Pro

Technical Publications

- EasyLogic MP-C
- MP-V
- RP-C Advanced
- RP-C Pro
- RP-C Pro Plus
- EasyLogic RP-C
- RP-V Advanced
- EasyLogic RP-V
- RP-C-EXT-0-10V-4-PD
- RP-C-EXT-0-10V-4
- RP-C-EXT-DALI-M-PD
- RP-C-EXT-DALI
- RP-C-EXT-BL-2-LV-PD
- RP-C-EXT-BL-4-HV-PD
- RP-C-EXT-BL-SMI-2-LV-PD
- RP-C-EXT-BL-SMI-4-HV-PD
- RP-C-EXT-ZB-0-10V
- RP-C-EXT-ZB-DALI
- RP-C-EXT-REL-4
- CRS-HH-REL-10
- RP-C-EXT-KNX
- RP-C-EXT-IS-BLE
- RP-C-EXT-MS-BLE
- RP-C-RC-BLE
- PS-24V
- Wireless Adapter - Advanced
- RS-485 Adapters
- IP-IO
- EasyLogic RP-IO
- DI-16
- RTD-DI-16
- UI-16
- AO-8 and AO-8-H
- AO-V-8 and AO-V-8-H
- DO-FA-12 and DO-FA-12-H
- DO-FC-8 and DO-FC-8-H
- UI-8/AO-4 and UI-8/AO-4-H
- UI-8/AO-V-4 and UI-8/AO-V-4-H
- UI-8/DO-FC-4 and UI-8/DO-FC-4-H
- Commission

- Project Configuration Tool
- Automated Engineering Tool
- Expert Tool

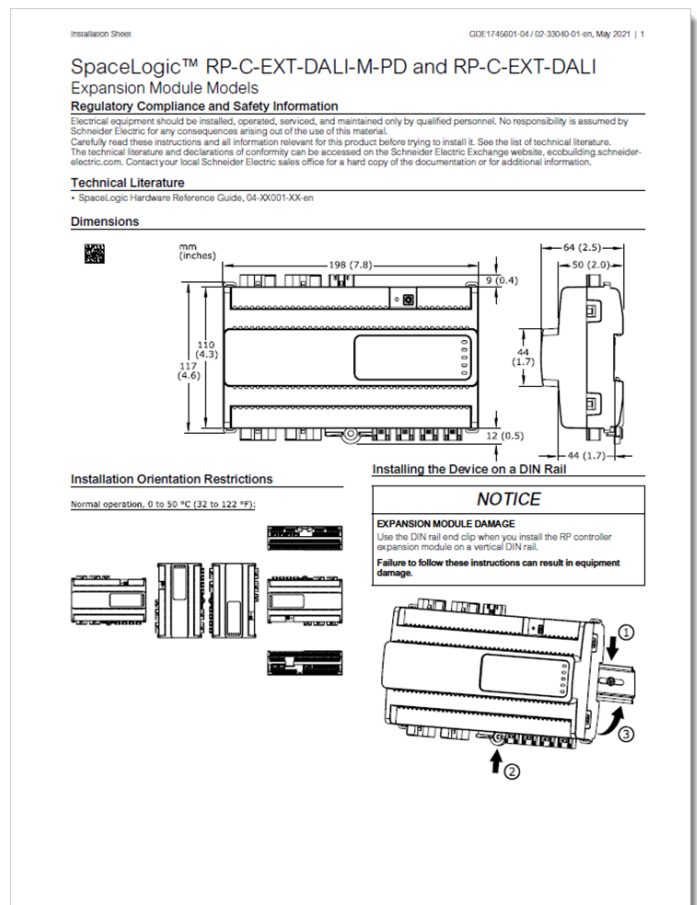
The specification sheets are available from the main menu on WebHelp.



WebHelp main menu

The information in the specification sheets is available to everyone on WebHelp.

Installation Sheets



Example of an installation sheet

Technical Publications

Installation sheets contain information on how to physically install our SpaceLogic devices. These documents are shipped with the product to support the panel builder or the technician mounting the device:

For more detailed information on the SpaceLogic devices, refer to the SpaceLogic Hardware Reference Guide.

The information in the installation sheets is available to everyone on WebHelp.

- Operator Display
- AD v3
- AS-P and AS-P-S
- AS-P-NLS
- TB-ASP-W1
- AS-B
- MP-C
- EasyLogic MP-C
- MP-C Display
- MP-V
- RP-C 24 V
- RP-C 230 V
- RP-C-16C-F-230V
- EasyLogic RP-C
- RP-V
- EasyLogic RP-V-5C-M
- RP-C-EXT-0-10V-4-PD and RP-C-EXT-0-10V-4
- RP-C-EXT-DALI-M-PD and RP-C-EXT-DALI
- RP-C-EXT-BL-2-LV-PD and RP-C-EXT-BL-4-HV-PD
- RP-C-EXT-BL-SMI-2-LV-PD and RP-C-EXT-BL-SMI-4-HV-PD
- RP-C-EXT-ZB-DALI and RP-C-EXT-ZB-0-10V
- RP-C-EXT-REL-4
- CRS-HH-REL-10
- RP-C-EXT-KNX
- RP-C-EXT-IS-BLE
- RP-C-EXT-MS-BLE
- Wireless Adapter - Advanced
- Bluetooth Adapter
- RS-485 Adapters
- RS-485 Power Adapter
- IP-IO
- EasyLogic RP-IO
- Central IO
- TB-IO-W1
- PS-24V
- TB-PS-W1
- Xenta to AS-P Adapter

www.se.com/buildings

Life Is On

Schneider
Electric