

# SpaceLogic™ RP-V

## Controller Models

Part numbers: SXWRPV4A10001 and SXWRPV5A10001

### Safety Information

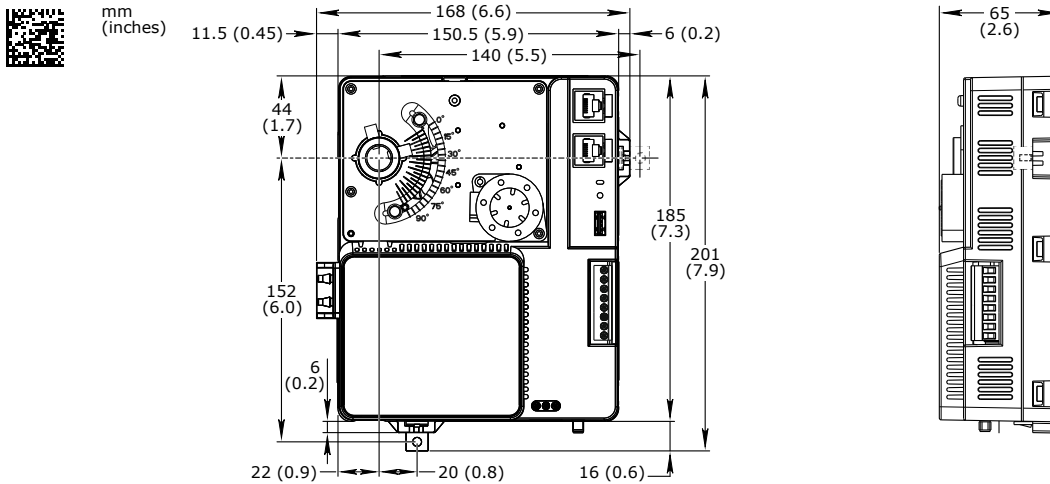
Electrical equipment should be installed, operated, serviced, and maintained only by qualified personnel. No responsibility is assumed by Schneider Electric for any consequences arising out of the use of this material. Carefully read these instructions and all information relevant for this product before trying to install it. See the list of technical literature.

### Technical Literature

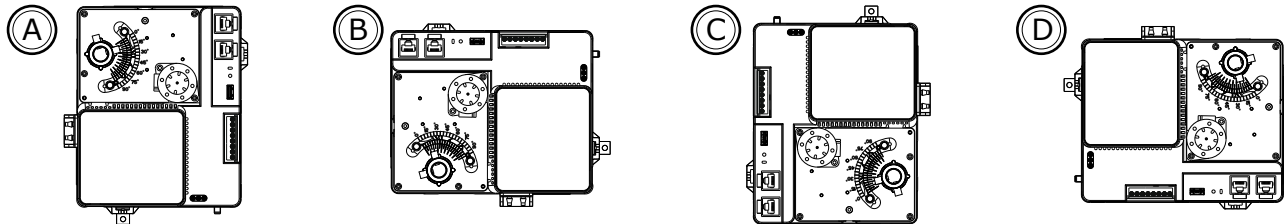
- SpaceLogic and EasyLogic - Hardware Installation System Guide, 04-XX001-XX-en

The technical literature and declarations of conformity can be accessed on the Schneider Electric extranet, [ecoxpert.se.com](http://ecoxpert.se.com). Contact your local Schneider Electric sales office for a hard copy of the documentation or for additional information.

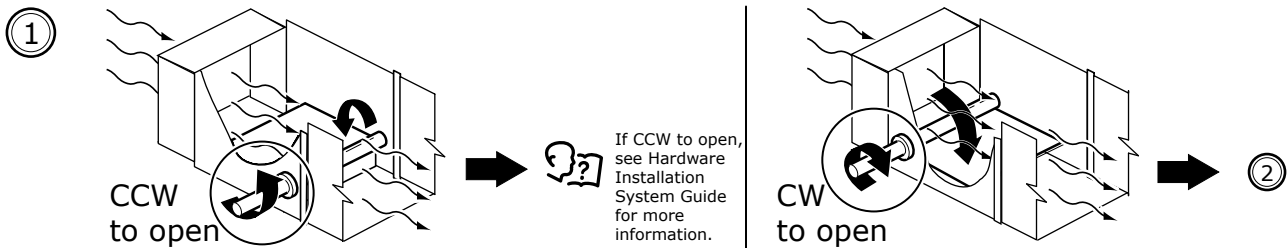
### Dimensions



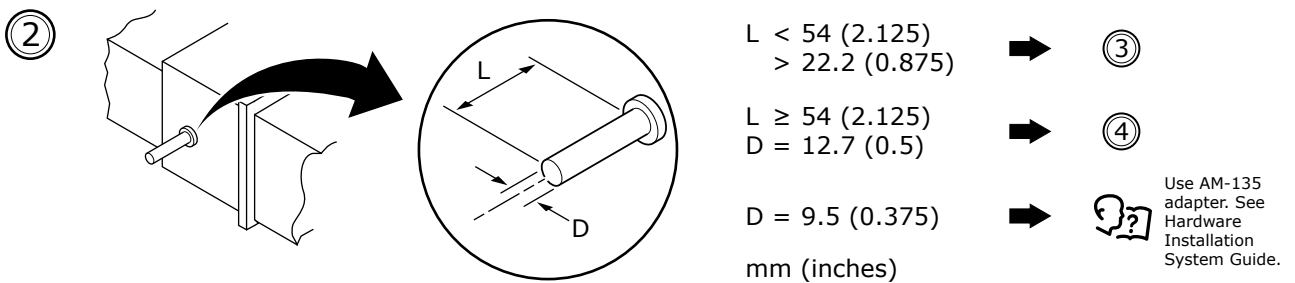
### Installation Orientations



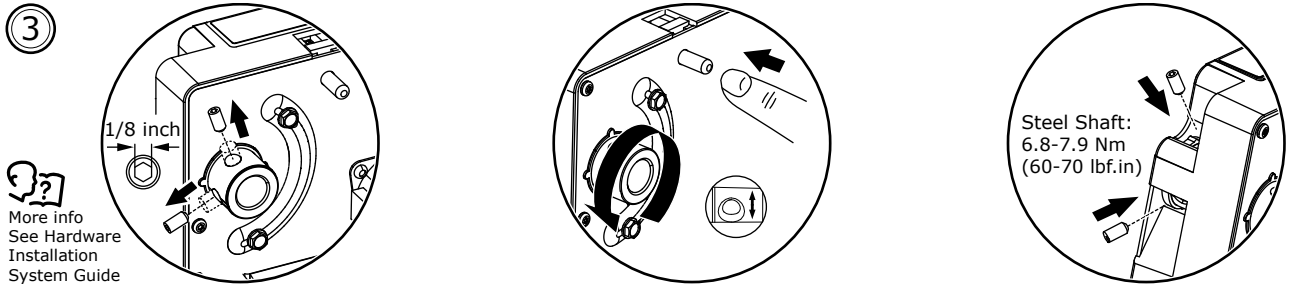
### Determining the Shaft Rotation Direction that Opens the Damper



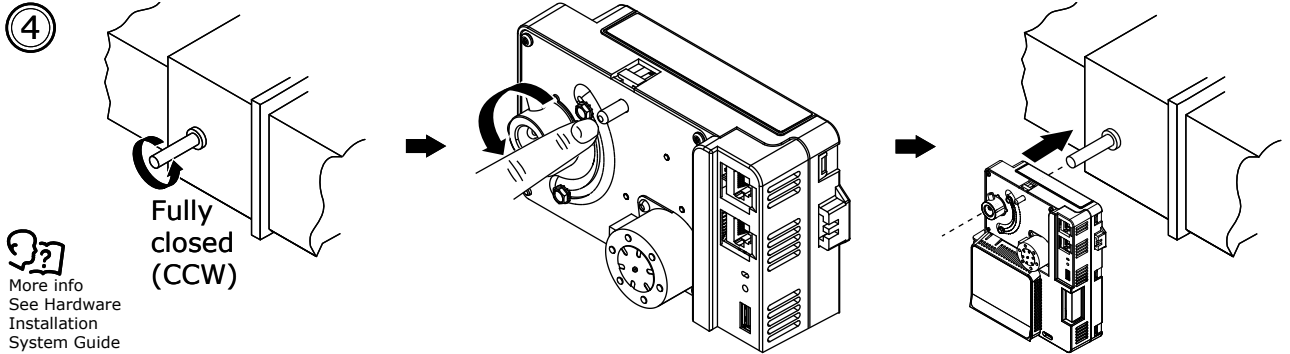
### Determining the Damper Shaft Length and Diameter



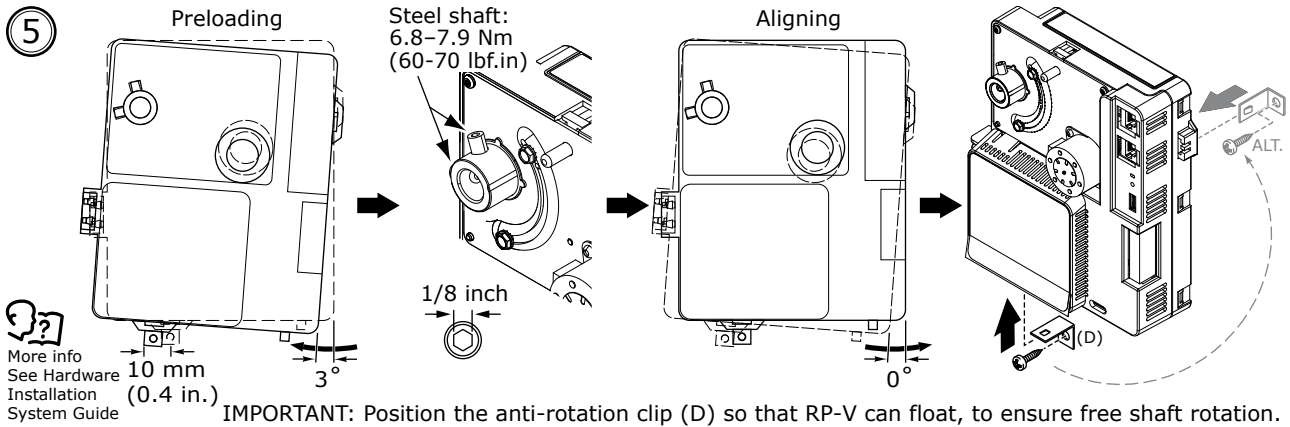
## Moving the Damper Shaft Mounting Screws to the Alternative Positions for Short Shafts Only



## Installing the RP-V over the Damper Shaft



## Securing the RP-V to the Damper Shaft and the VAV Box



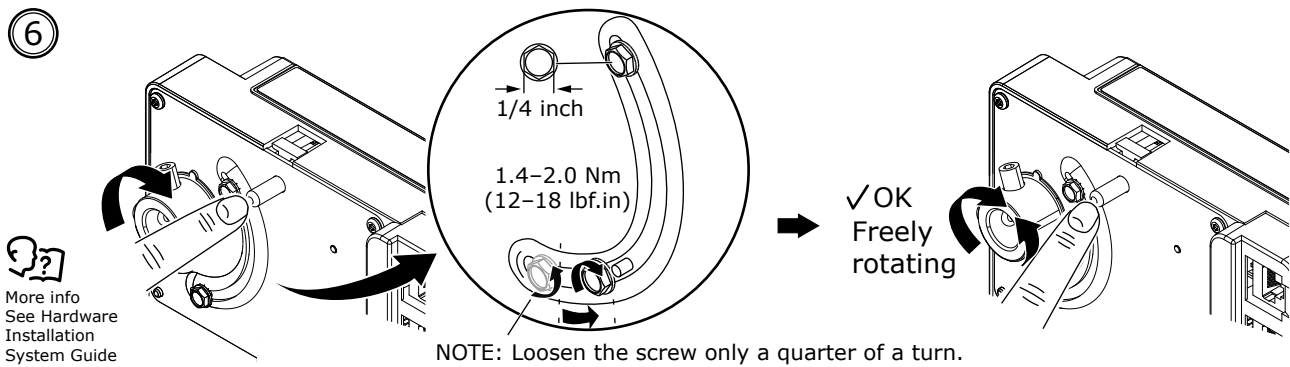
## Adjusting the Position of the CW Travel Adjustment Screw (Open CW Stop)

### NOTICE

#### VAV DAMPER NOT PROPERLY CONTROLLED

Ensure that the VAV controller damper actuator can rotate freely between the fully open and fully closed positions.

Failure to follow these instructions can result in the VAV damper not being properly controlled by the controller.



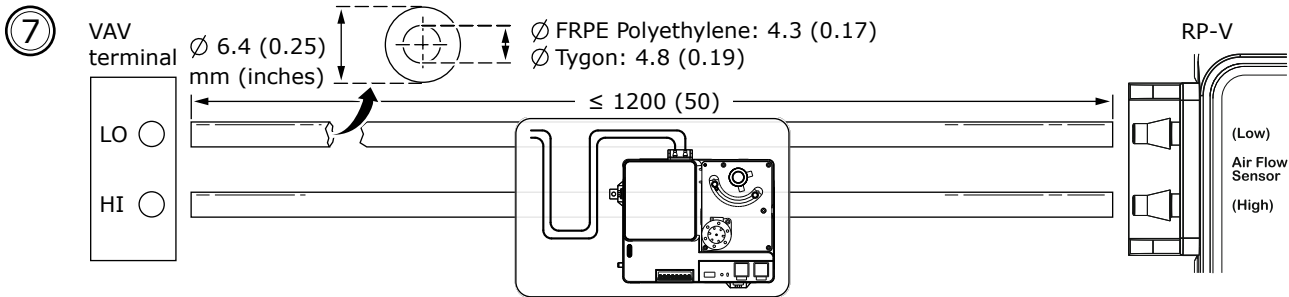
Connecting the Air Flow Sensor

**NOTICE**

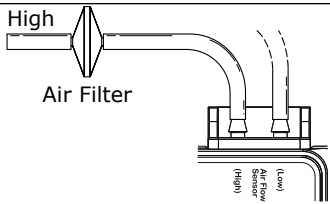
**AIR FLOW SENSOR DAMAGE**

Create a tubing dip that extends below the elevation of the barbed fittings to help prevent moisture from entering the VAV controller. This applies to all controller orientations.

**Failure to follow these instructions can result in equipment damage.**



**NOTE:** When operating in an unusually dusty environment, connect an in-line air filter on the high side pressure tube from the VAV box with the filter positioned close to the VAV box. The filter helps prevent dust from entering the velocity measurement tube.



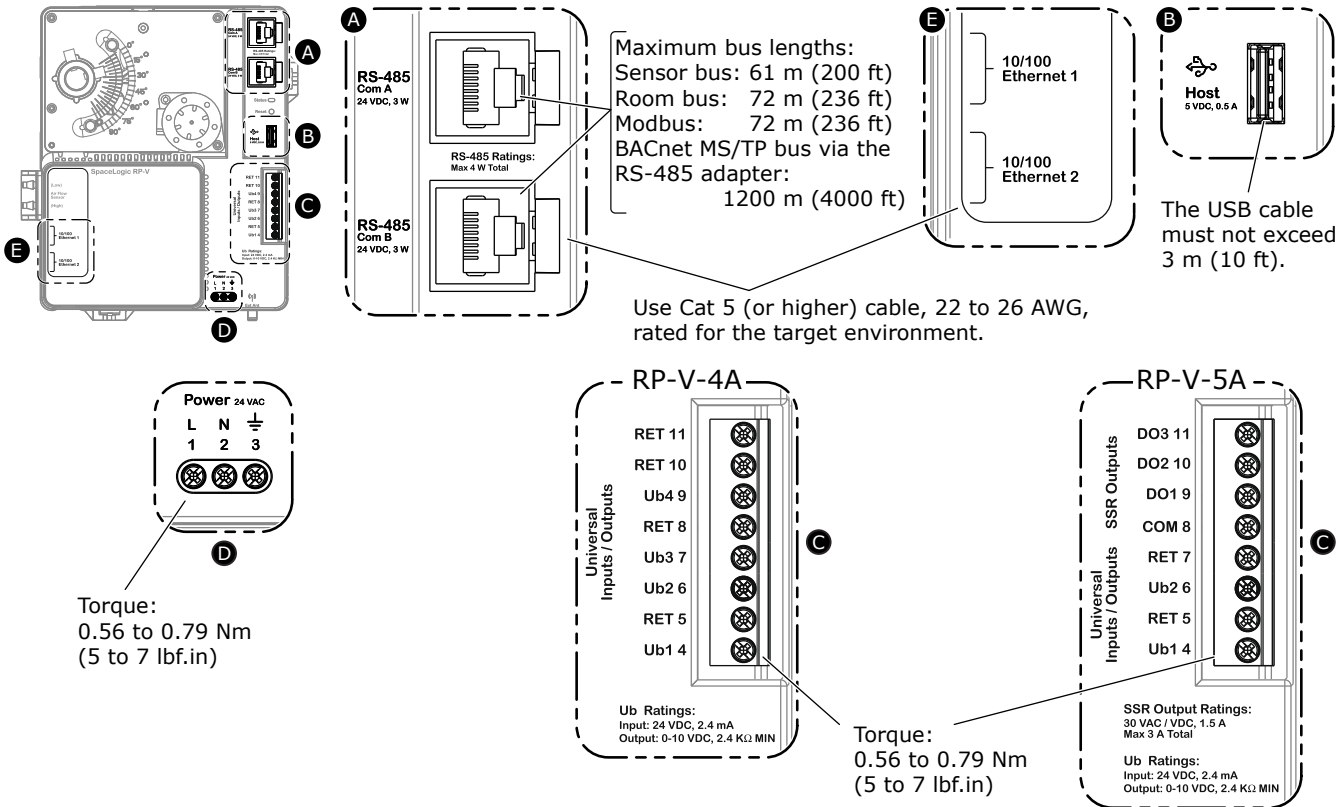
Connections

**NOTICE**

**CONTROLLER DAMAGE OR VAV DAMPER NOT PROPERLY CONTROLLED**

- Before powering up the controller, ensure that the input power polarity is correct and that the voltage level meets the specifications of the controller.
- Ensure that the controller is properly installed and secured before the application of 24 VAC power and the damper position calibration that starts automatically with it.

**Failure to follow these instructions can result in equipment damage or the VAV damper not being properly controlled by the controller.**



## Wiring

Recommended screw tightening torque: 0.56 to 0.79 Nm (5 to 7 lbf.in)

For information on wiring, see the SpaceLogic and EasyLogic - Hardware Installation System Guide.

## Part Numbers

Product	Part number
RP-V-4A	SXWRPV4A10001
RP-V-5A	SXWRPV5A10001
Adapter for damper shaft diameter 9.5 mm (3/8 inch)	AM-135
Isolated RS-485 adapter (cable not included)	SXWISORS48510001
Non-isolated RS-485 adapter (cable not included)	SXWNISORS48510001
RS-485 power adapter (cable not included)	SXWNISORS485P10001

For more information on the RS-485 adapters and the cable required, see the RS-485 Adapter and RS-485 Power Adapter Installation Sheets.

## Specifications

<b>AC input</b> <b>Nominal voltage</b> 24 VAC $\sim$ 50/60 Hz <b>Power consumption</b> 18 VA	<b>Approved external antenna (optional)</b> Manufacturer: Linx Technologies, Model: ANT-2.4-WRT-MON-SMA, Gain: 0.8 dBi, Type: Monopole, Impedance: 50 ohm, Connector: SMA	IP networking <b>IP address assignment methods</b> Static, DHCP (default), Auto-IP (address range 169.254.0.1 to 169.254.255.254, subnet mask 255.255.0.0)
<b>Port types</b> <b>USB host port</b> Type-A, 5 VDC, 0.5 A <b>Ethernet port 1 and 2</b> 10/100BASE-TX (RJ45), IEEE 802.3 compliant <b>RS-485 Com A and Com B</b> 24 VDC, 3 W, RS-485 (RJ45) Max. 4 W total load	<b>Operation environment</b> <b>Ambient temperature, operating</b> 0 to 50 °C (32 to 122 °F) <b>Humidity</b> Maximum 95 % RH non-condensing	Ub – Universal I/O <b>Input rating</b> 24 VDC $\text{---}$ , 2.4 mA <b>Voltage output rating</b> 0 to 10 VDC $\text{---}$ , 2.4 kohm (min.) <b>Channels</b> RP-V-4A: 4; RP-V-5A: 2
<b>Wireless connectivity</b> <b>Bluetooth® Low Energy (Bluetooth® 5)</b> 2.402 to 2.480 GHz, max. 10 dBm output power, 100 m (328 ft) line-of-sight range <b>Antenna</b> Integrated antenna	<b>Mechanical</b> <b>Ingress protection rating</b> IP 20 <b>Plastic flame rating</b> UL94 V-0 <b>Plenum rating</b> UL 2043 (Approved for plenum installations)	DO – Solid-state relay outputs <b>Output rating</b> 30 VAC $\sim$ / 30 VDC $\text{---}$ , 1.5 A Max. 3 A total load <b>Output rating for UL applications</b> 24 VAC $\sim$ , Class 2, 1.5 A Max. 3 A total load <b>Channels</b> RP-V-4A: 0; RP-V-5A: 3

## Addendum - California Proposition 65 Warning Statement for California Residents

**⚠ WARNING:** This product can expose you to chemicals including lead which is known to the State of California to cause cancer and which is known to the State of California to cause birth defects or other reproductive harm. For more information go to [www.P65Warnings.ca.gov](http://www.P65Warnings.ca.gov)

部件名称 (Part Name)	有害物质 (Hazardous Substances)					
	铅 (Pb)	汞 (Hg)	镉 (Cd)	六价铬 (Cr (VI))	多溴联苯 (PBB)	多溴二苯醚 (PBDE)
塑料部件 (Plastic Parts)	○	○	○	○	○	○
电子件 (Electronics)	X	○	○	○	○	○

本表格依据 SJ/T11364 的规定编制。(This table is made according to SJ/T 11364.)

○: 表示该有害物质在该部件所有均质材料中的含量均在 GB/T 26572 规定的限量要求以下。  
 (Indicates that the concentration of hazardous substance in all of the homogeneous materials for this part is below the limit as stipulated in GB/T 26572.)

X: 表示该有害物质至少在该部件的某一均质材料中的含量超出 GB/T 26572 规定的限量要求。  
 (Indicates that the concentration of hazardous substance in at least one of the homogeneous materials used for this part is above the limit as stipulated in GB/T 26572.)

