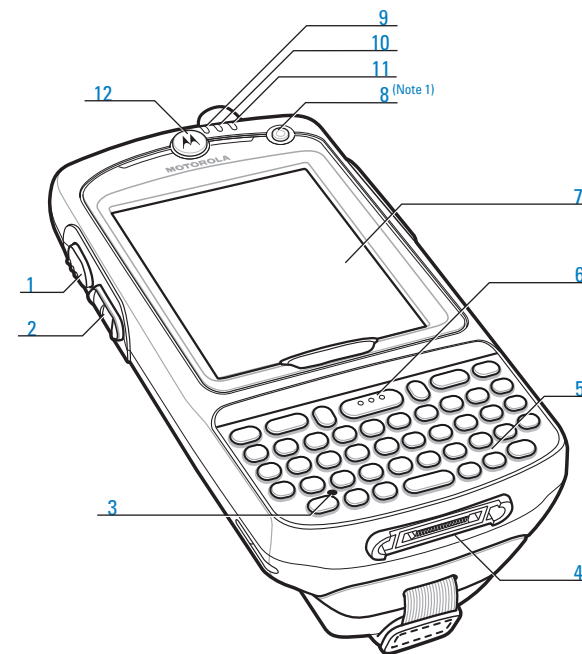
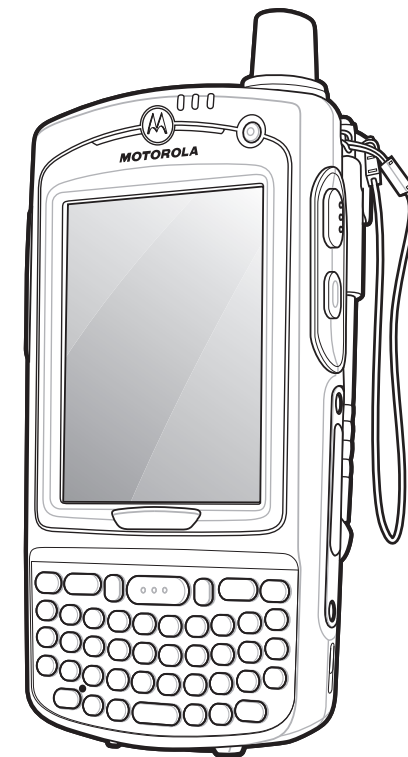




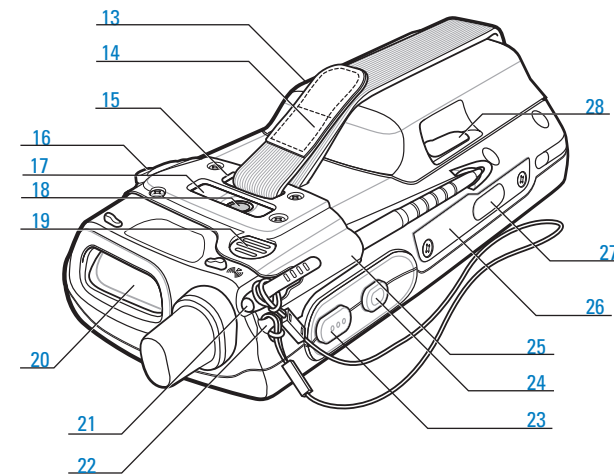
FEATURES



- | | | |
|----------------------|-------------------------|--------------------------------|
| 1 Scan/Action Button | 5 Keypad | 9 Scan/Decode LED |
| 2 Up/Down Button | 6 Scan/Action Button | 10 Charging/Battery Status LED |
| 3 Microphone | 7 Touch Screen | 11 Radio Status LED |
| 4 I/O Connector | (with screen protector) | 12 Phone Speaker |
| | 8 Power Button | |

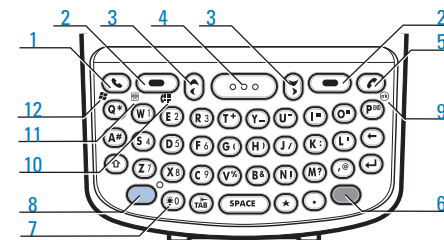
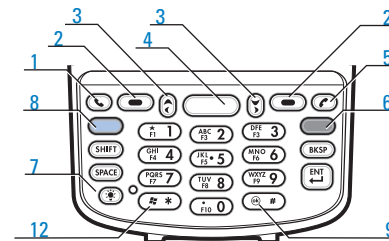
Note 1: To reset the MC75, press and hold the Power button for five (5) seconds.

- | | | |
|-------------------|----------------------------|-------------------------|
| 13 Battery Door | 17 Camera Flash | 23 Scan/Action Button |
| 14 Handstrap | 18 Camera | 24 Action Button |
| 15 Handstrap Slot | 19 Speaker | 25 Back Housing Bracket |
| 16 Headset Jack | 20 Exit Window | 26 Memory Card Cover |
| | (see Data Capture Options) | 27 IrDA Window |
| | 21 Stylus | 28 Battery Door Latch |
| | 22 Tether Point | |



KEYPADS

- 1 Talk
- 2 Soft Key
- 3 Navigation
- 4 Scan/Action Button
- 5 End
- 6 Orange Key
- 7 Backlight
- 8 Blue Key
- 9 OK
- 10 Phonepad*
- 11 Menu*
- 12 Start Menu



* Alpha-numeric keypad only.

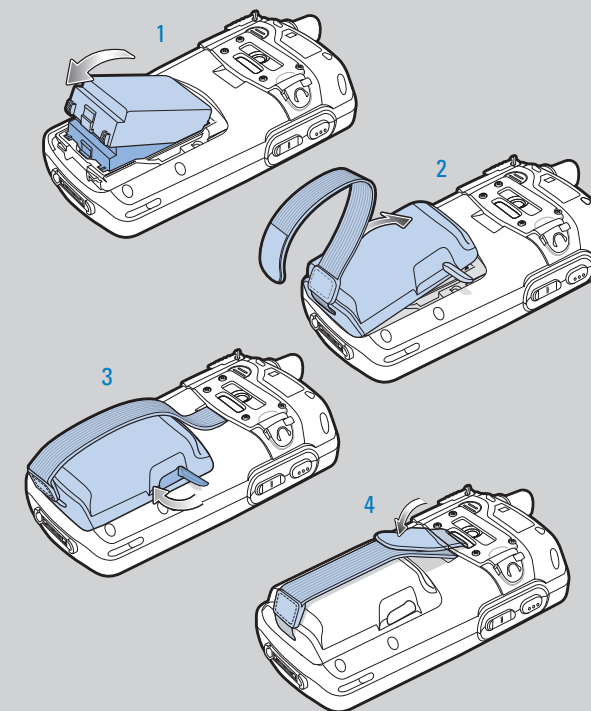
Blue Key

Use this key to launch applications and select items (shown on the keypad in blue).
 > Press the key once to activate this mode followed by another key.

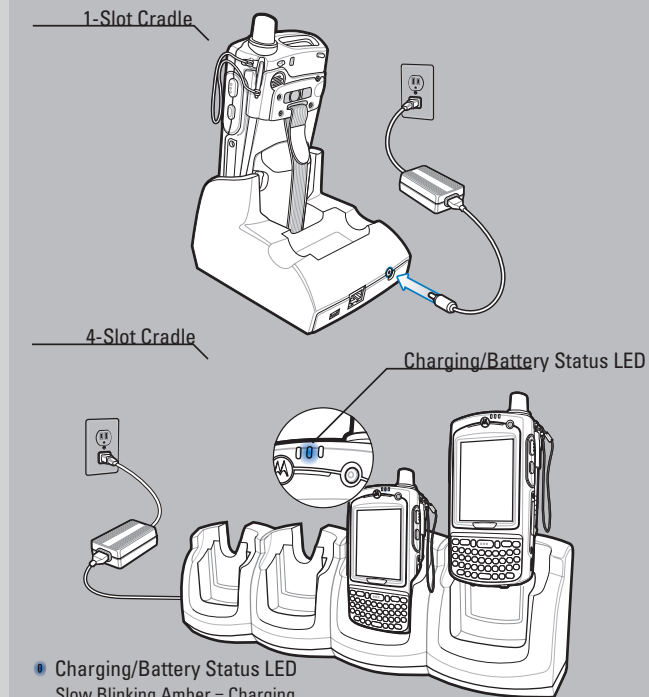
Orange Key

Use this key to access the secondary layer of characters and actions.
 > Press the key once to lock the keypad in the Alpha state.
 > Press the key a second time to return to the normal state.

GETTING STARTED

1 Insert the Battery

Note 2: 3600 mAh capacity battery and door shown.

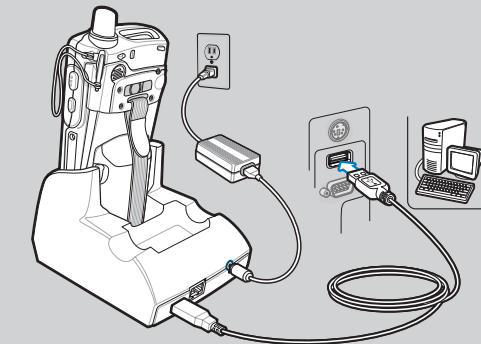
2 Charge the MC75 24hr***Charging/Battery Status LED**

Slow Blinking Amber = Charging
 Solid Amber = Fully Charged
 Fast Blinking Amber = Charging Error

* It is recommended that this product be charged for 24 hours before the first use to ensure that the internal battery is fully charged.

3 Install ActiveSync®

Download ActiveSync® 4.5 or higher from <http://www.microsoft.com> and follow the instructions to install ActiveSync onto the host computer.

4 Communicate with Host**5 Create a Partnership**

Follow the on-screen ActiveSync instructions to establish a connection between the MC75 and the host computer.

SUPPORT INFORMATION

More Information on the MC75

Visit the Motorola Web site at <http://www.motorola.com/mc75>

Setting up, using and troubleshooting the MC75

MC75 User Guide

MC75 Integrator Guide

Available at: <http://www.motorola.com/mc75>

Additional Software

Check Motorola web site for approved applications.

<http://www.motorola.com/mc75>

Connecting and synchronizing with the host computer

ActiveSync® Help on the host computer. To view help, start ActiveSync®, Click Help - Microsoft ActiveSync Help.

Information on using programs on the MC75

Tap Start - Help within the specific program.

Service and Warranty

MC75 Regulatory Guide



MOTOROLA

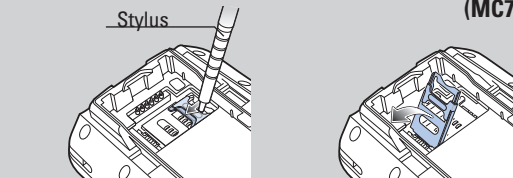
Motorola, Inc.
One Motorola Plaza
Holtsville, New York 11742-1300, USA
MOTOROLA and the Stylized M Logo and Symbol and the Symbol logo are registered in the U.S. Patent and Trademark Office. All other product or service names are the property of their respective owners.
© Motorola, Inc. 2008



72-103079-02 Rev. A — August 2008

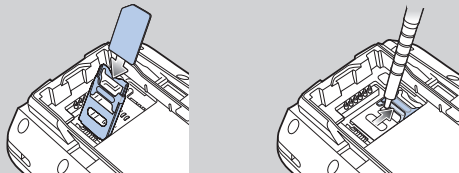
ACCESSORIES

SIM Card Installation (Located Under Battery) (MC75X6 only)



1 Use stylus to open door

2 Lift door



3 Place SIM card with contacts facing down

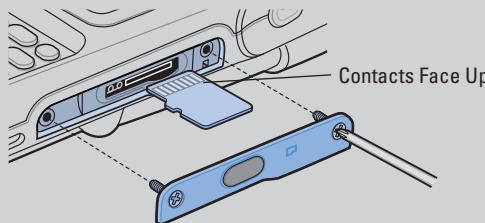
4 Snap door closed

5 Replace battery and door

6 Ensure Phone is turned on.

7 Press red Power button for five seconds to warm boot

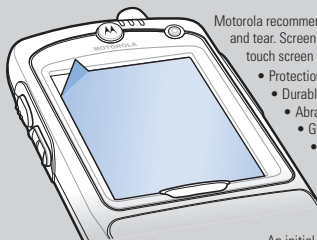
MicroSD Card Installation



Contacts Face Up

<http://www.motorola.com/mc75>

Screen Protector



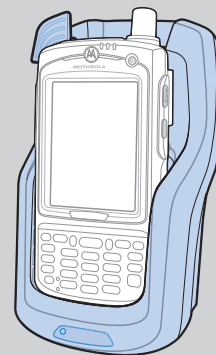
Motorola recommends the use of a screen protector to minimize wear and tear. Screen protectors enhance the usability and durability of touch screen displays. Benefits include:

- Protection from scratches and gouges
- Durable writing and touch surface with tactile feel
- Abrasion and chemical resistance
- Glare reduction
- Keeping the device's screen looking like new
- Quick and easy installation.

Not using a screen protector can affect your warranty coverage.

An initial screen protector is already applied to your MC75. Contact your local account manager or Motorola, Inc. for more information and purchasing details. Part number: KT-67525-01R Screen Protector 3/pk.

Vehicle Cradle

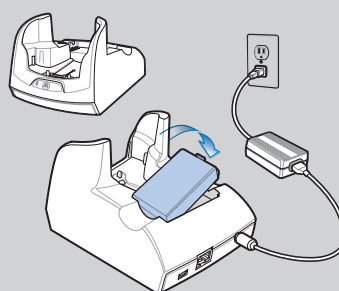


3600 mAh Capacity Battery: ~ 5 hours

4800 mAh Capacity Battery: ~ 7 hours

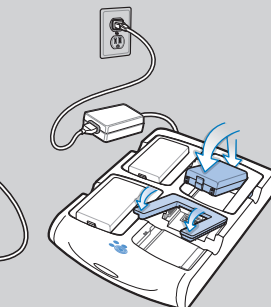
Charge in Cradle

Flashing Amber: Battery charging
Solid Amber: Battery fully charged



Spare Battery Charger

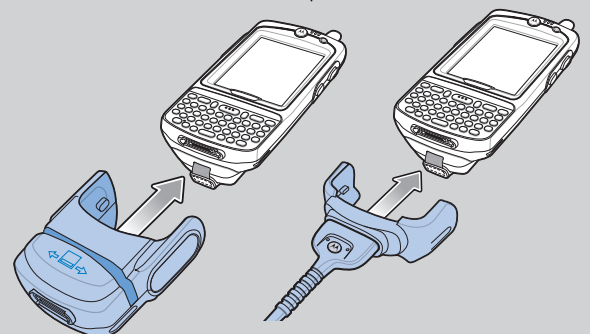
Flashing Amber: Battery charging
Solid Amber: Battery fully charged



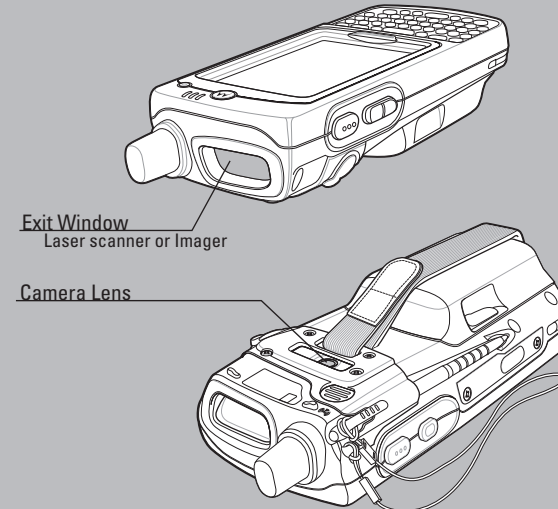
Snap-On Accessories

Magnetic Stripe Reader

Cables



DATA CAPTURE OPTIONS



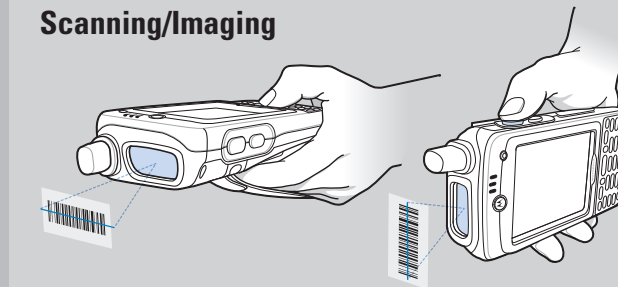
GPS INFORMATION

When using the GPS feature of the MC75:

- Acquiring satellite signals may take a few minutes. It is best to be outside and have a clear, unobstructed view of the sky.
- Without a clear view, acquisition takes much longer and could result in the MC75 being unable to compute the initial position quickly.
- Obtain a satellite fix before moving.
- Shutdown GPS application when not in use.

OPTIMUM SCANNING AND IMAGING

Scanning/Imaging



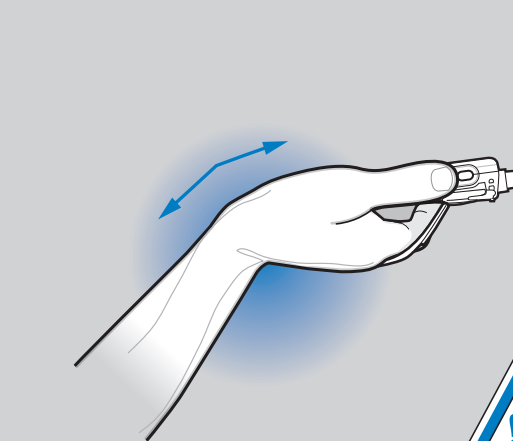
Scanning



Imaging



AVOID EXTREME WRIST ANGLES



AVOID EXTREME WRIST ANGLES

