



# Step into a new low-carbon and digital reality

## EcoFit™ Circularity & Repairability Services

### Greater sustainability

- Efficient use of natural resources by replacing active components
- Recycling of obsolete equipment
- Enabled energy efficiency monitoring

### Improved efficiency

- Lifetime extension for existing switchboards
- Unleash the power of connectivity with smart sensors
- Reduced plant shutdown time from days to hours
- No change of cables and no civil work
- Improved safety of people and surrounding equipment

### Resiliency with digital capabilities

- Continuous asset condition monitoring
- Remote operation ability
- Access to digital energy management solutions and connected service plans

### Benefits

- Maximizing your resiliency, efficiency and safety while minimizing waste for the Planet
- Digitization giving access to energy management
- Enhanced process dependability
- Optimized maintenance service costs
- Spare parts availability to help your repairability program

### Expert help from Schneider Electric

- Worldwide support with Schneider Electric's warranty
- Skilled installation and commissioning experts available locally
- Access to the expertise of a global leader in energy management solutions

[se.com/ecofitselector](https://se.com/ecofitselector)

Life Is On

**Schneider**  
Electric

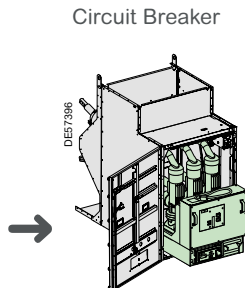
# Cradle to Cradle / All breaker types Withdrawable CB with F400 cassette

## Original brand: all brands

### EcoFit™ Life Extension Advanced for Electrical Distribution, a true extended life time

#### All breaker types

Compatible with all open Air Insulated Switchgear legacy and no legacy cubicles with minimum inside panel width  $\geq 1105$  mm



This solution consists in fitting a cradle inside an existing panel:

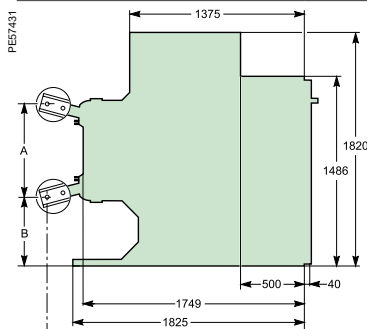
- It is particularly adapted for non Schneider Installed Base.
- EcoFit™ Life Extension Advanced solution with shutters and mechanical interlocks embedded.
- Only the fixed connections (between the cradle and existing busbar) are customized.
- No age condition of the existing equipment.
- Only the width of the existing panel has to be considered.

### Main technical characteristics

	All types	
Rated current (Ir)	1250-2500 A	1250 A
Short circuit current (Isc)	Up to 40 kA	Up to 31.5 kA
Rated voltage Un (50/60 Hz)	24-36 kV	40.5 kV

	F400 - EvoPact SF	F400 cassette
Technology	SF6	SF6
Rated voltage Ur (kV)	24-36	40.5
Surge withstand voltage Up (kV)	125-170	185
Nominal frequency (Hz)	50-60	50-60
Rated current Ir (A)	1250-2500	630-1250
Short circuit current Isc (kA)	25-40	31.5
Short circuit duration Tk (s)	3	3

	MC1	MC2
Switching sequence	O-3 min-CO-3 min-CO O-0.3 s-CO-3 min-CO O-0.3 s-CO-15 s-CO	
Closing time (ms)	< 65	< 65
Opening time (ms)	< 50	< 50
Number of switching operations	10000	10000
Service temperature (°C)	-25/+40	-25/+40



Cassette	1250 A	2500 A - 3000 A
Dimensions (mm)		
A	748	752
B	540	533
C	2030	2030
Weight (kg)	750	850

### Make the most of your equipment with available add-ons



Protection relays  
PowerLogic, Sepam, MiCom  
Arc Flash

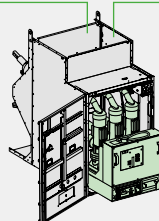


PROTECTION

SUSTAINABILITY



EcoFit™ Recover  
SF6, raw material recovery



TECHNOLOGY



Vacuum vs SF6, Oil, Air  
Vacuum solutions may require overvoltage protections



Schneider Electric Industries SAS  
35 rue Joseph Monier  
92500 Rueil-Malmaison, France  
Phone: + 00 (0) 1 41 29 70 00  
[www.se.com/services](http://www.se.com/services)

Life Is On

**Schneider**  
Electric