



# Actassi PL

Performance focused system

The Permanent Link system  
Catalogue | 12/2015

[schneider-electric.com](http://schneider-electric.com)

Life Is On

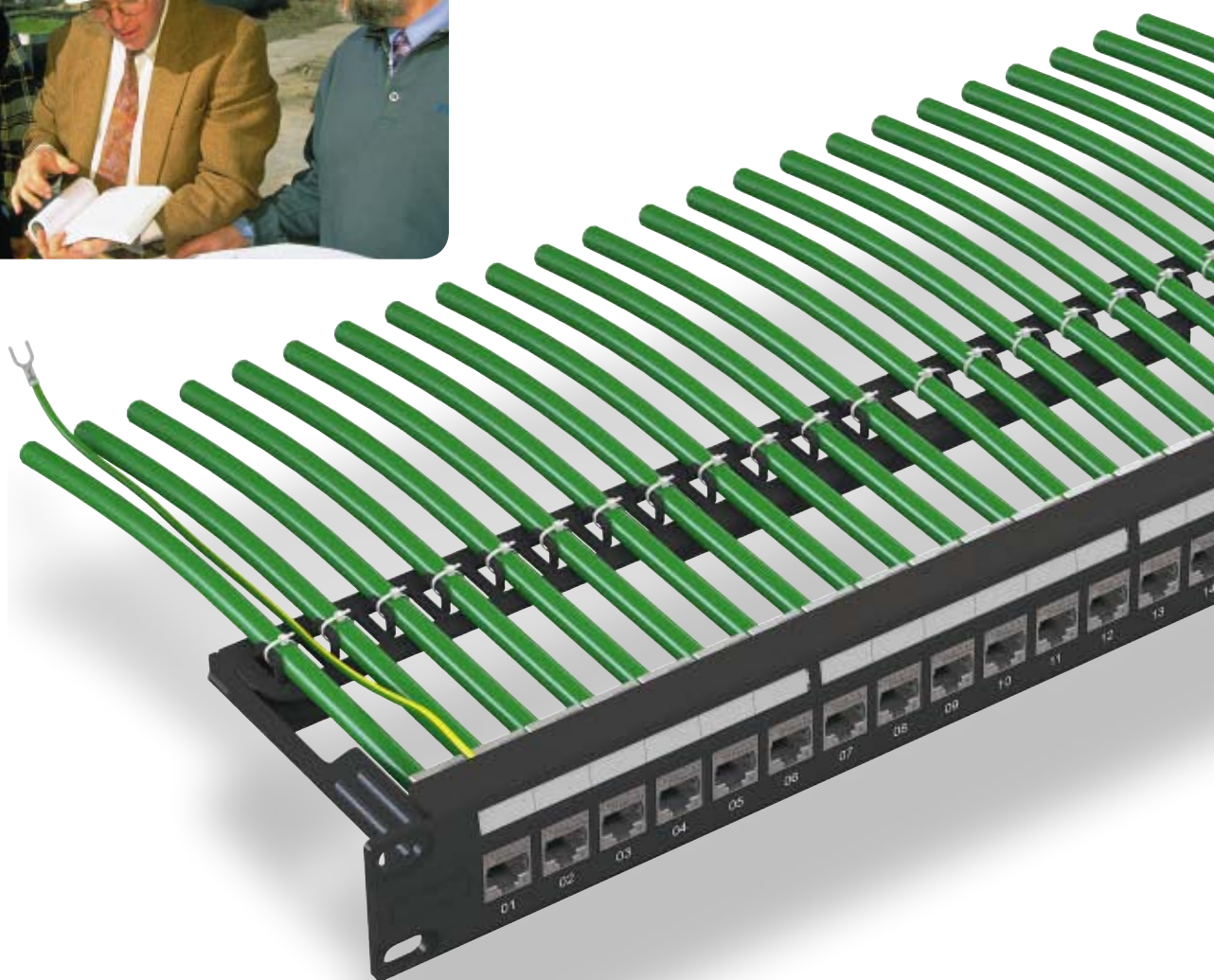
**Schneider**  
Electric

Life is so much diversified, why you



## Actassi PL

completes the diversity of the Actassi range with a performance focused system for short life-cycle and ultra-fast return-on-investments projects.



Actassi PL certified by Delta



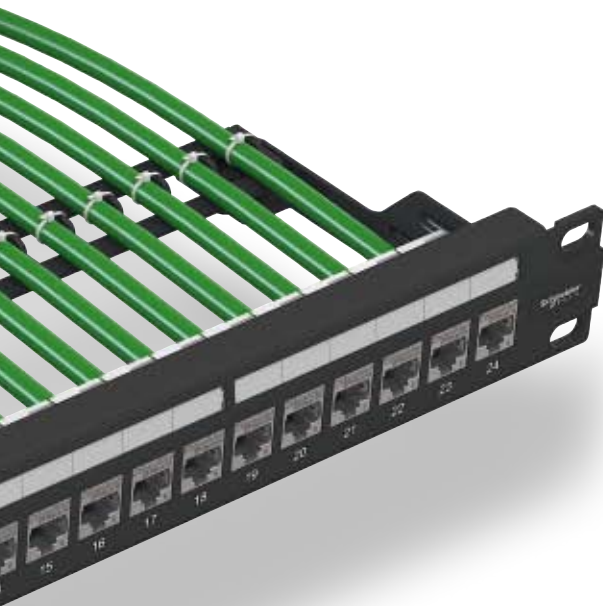
# or LAN network wouldn't be ?

Now with **Actassi PL**, you also have a solution for less demanding network infrastructures.

## What are the **Actassi PL** usage scenarios?

**Actassi PL** is particularly appropriate for installations such as:

- + exhibitions, from simple showrooms to international trade fairs, and often reconfigured,
- + temporary buildings, for example, prefabricated buildings,
- + or any other building, whose user knows that the network infrastructure will have a relatively short life cycle,
- + or when a network with a longer life cycle will not have to be upgraded and will therefore never serve a more significant purpose than the one for which it was designed (for example, a dedicated network for an application that is not intended to be developed much further).



## How are the criteria for selecting **Actassi PL** recognised?

**Actassi PL** is designed for infrastructure networks that

- + have a very short lifetime,
- + or are not long-term critical, not subject to malfunction penalties or to a restoration guarantee contract, etc,
- + or not intended to carry PoE on a long-term basis, or in all cases, always less than 13 W,
- + or have an installation configuration that is relatively stable over time (very little patching/reconfiguration),
- + or have a standard density of 24 U connectors with no other optimisation requirement,
- + have a simple product guarantee,
- + need a high transmission performance level. Performance certificate delivered by Delta, LAN network specialist, independent and worldwide recognised,
- + do not save on safety (earthing).

## **Actassi PL** on your worksites, as fast and efficient as **Actassi**

With **Actassi PL**:

- + you keep your order and delivery flows from your usual distributor,
- + you reuse your existing processes,
- + you keep your contacts,
- + your deliveries arrive on time and on schedule.

Consequently, with **Actassi PL**, you can depend on the recognised market leader to further widen the range of VDI network infrastructure solutions you offer your customers, while giving yourself the same procurement and delivery flexibility as with **Actassi** solutions.

The following system (Connector, panel and cable) is provided with a third party permanent link certificate.

## Modular Jack tool-less RJ45 keystone connector

- Performance categories: Cat 6 shielded
- Body and metal flap material: Zinc Alloy, Ni plated
- Size: height 24 mm, width 17 mm, depth 37 mm
- Applicable standards:
  - ISO/IEC 11801: 2011 Ed2.2, class E permanent link and channel
  - IEC 60603-7-5 Cat 6 connecting hardware
  - IEC 60603-7 Annex D: keystone footprint
- Two-piece design
- Tool-less IDC termination
- Earthing drain wire contact
- Operational temperature range: -40°C to +66°C
- Voltage proof contact-contact: > 1000 V DC
- Voltage proof contact-shell: > 1500 V DC
- Box of 24 connectors individually packed.

P122477

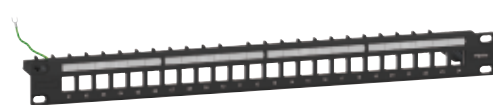


Description	Qty/pack	Reference
Modular Jack tool-less RJ45 keystone connector Cat 6 shielded	24	VDIB17776B24

## Empty fixed panel for Modular Jack RJ45 connector 1U 24 ports

- Empty fixed 19" copper panel (without connectors)
- 1U height
- 24 RJ45 ports for Keystone footprint (IEC 60603-7 Annex D)
- Panels equipped with 4 label holders
- Rear metal cable manager
- Steel metal sheet: thickness 1.8 mm
- Automatic connector grounding
- Grounding wire included: 18 AWG
- Cage nuts provided
- Plastic parts in ABS/PC, FC FR, AS
- Simple clicking connectors for mounting.

P122478



Description	Qty/pack	Reference
Empty panel 1U FTP 24 ports keystone	1	VDIG017241B

## CL-C Cat 6 Copper LAN cables

### CL-C Cat 6 F/UTP

#### Specifications

- 100 ohms, 250 MHz, AWG24, 4 pairs or 2x4 pairs with overall screen. Cross filler to organize the pairs
- Compatible with PoE (Power over Ethernet) and PoEP (Power over Ethernet Plus) which allow to supply equipments (IP phone, camera, WIFI hotspot...) until 13 W or 25 W.

#### Performances

- Compliant to EN 50173-1, ISO/IEC 11801: 2011 Ed2.2, IEC 61156-5 Ed2 and EN 50288-5-1 standards.

#### Use

- Network cabling systems for category 6 voice & data applications. Data rates transmission: Gigabit Ethernet, 10/100 BaseT.

Type	Weight	Diameter	Sheath	Cond/Length	Ref. No
4 pair cable	48.8 kg/km	7.1 mm	LSZH	500 m	VDIC136218
2x4 pair cable	98.5 kg/km	7.1x14.4 mm	LSZH	500 m	VDIC136228

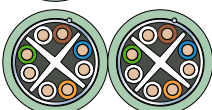
P119667



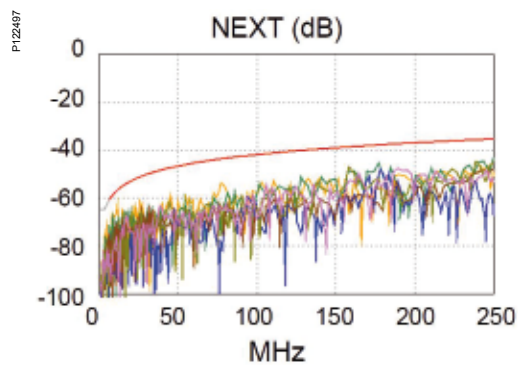
P120018



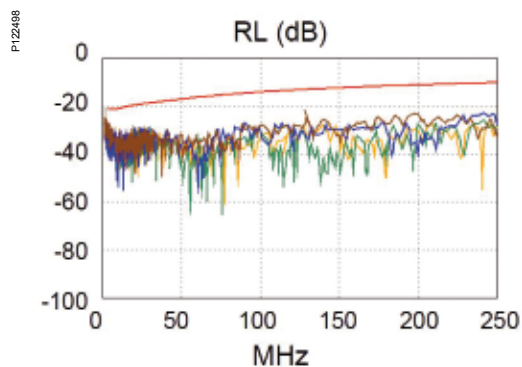
P120019



The Actassi PL link, made of a cable and 2 connectors, possesses excellent characteristics, measured and certified by the independent Delta organization. Here are the NEXT and RL characteristics of a complete link (92,1 m).



Security margin: 6 dB



Security margin: 7.2 dB

Schneider Electric Industries SAS

35, rue Joseph Monier - CS 30323  
F-92506 Rueil-Malmaison - FRANCE  
Phone: + 33 (0) 1 41 29 70 00  
Fax: + 33 (0) 1 41 29 71 00  
[www.schneider-electric.com](http://www.schneider-electric.com)

12-2015

Document Number LSB03141EN

©2015 Schneider Electric. All Rights Reserved.

All trademarks are owned by Schneider Electric Industries SAS or its affiliated companies.

This document has been  
printed on recycled paper

