




EVlink Residential, easy installation and guaranteed customer satisfaction.

EVlink Residential charging stations are designed so users can have a dedicated charging point for their electric vehicle in their garage.

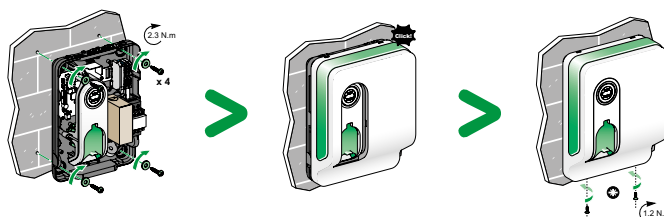


Faster charge time than a generic socket-outlet

Method used	Domestic socket	Wallbox	Wallbox
230V ~ power	2 kW	3.7 kW	7 kW
Time to fully charge the battery	 12h	 8h	 5h

+ Ease of installation

Mounting the charging station



+ Optimized cost of charging

- > 3 charging modes: Plug and charge, delayed, and override
- > Reduction in energy costs due to load shedding, charging during off-peak times



CB Scheme certified
by LOIE in accordance with standards IEC 61851-1 and IEC 61851-22



Green
Premium
Product



For more information

EVlink Residential



Cable holder

This is used to wind up the cable for ease of storage. It is fitted to the wall.

Catalog number: **NCA00100**



ZE Ready from Renault

EVlink Residential can be used to create a "ZE Ready" installation provided that it is set up in accordance with Renault's instructions and the work is conducted by an approved professional.

Schneider Electric Industries SAS

35, rue Joseph Monier
CS 30323
F- 92506 Rueil Malmaison Cedex

RCS Nanterre 954 503 439
Share capital: €896,313,776
www.schneider-electric.com

Characteristics of each catalog number

Catalog numbers	NCA11130	NCA11230	NCA19130	NCA19330	NCA11100	NCA19310
Charging station without attached cable	x	x	x	x		
Charging station with attached cable					x	x
Connector type	T3	T3	T3	T3	T1	T2
Protection included	x	x				
Countries	FR	FR	INT*	INT*	INT*	INT*
Maximum charging current	16A	32A	16A	32A	16A	16A
Line supply	1-phase	1-phase	1-phase	1-phase	1-phase	3-phases
Line supply frequency	50Hz or 60Hz	50Hz or 60Hz	50Hz or 60Hz	50Hz or 60Hz	50Hz or 60Hz	50Hz or 60Hz
Neutral point connection	TT or TN	TT or TN	TT or TN	TT or TN	TT or TN	TT or TN
Power circuit voltage	230V~	230V~	230V~	230V~	230V~	400V~
Power	3,7kW	7,4kW	3,7kW	7,4kW	3,7kW	11kW
Control circuit voltage	230V~	230V~	230V~	230V~	230V~	230V~
Weight	2,5kg	2,5kg	2,5kg	2,5kg	5kg	5kg

Characteristics for all catalog numbers

Mounting	Wall mounted
Casing dimensions (HxWxD)	323x242x100mm
Degree of protection	IP41
Mechanical degree of protection	IK08
Usage temperature	-25°C / +50°C
Storage temperature	-50°C / +80°C
Relative humidity (Rh)	<93%
Predominant material	Polycarbonate
Standard	IEC61851-1, IEC61851-22, IEC62196

* International excluding North America

Safety:

- > Vehicle grounded during charging
- > Charging current limited according to the lowest capacity of components in the charging system (vehicle, charging cable, charging station)
- > Charging station switches to fault mode if there is a problem on the charging cable or the line supply

Owing to changes in standards and equipment, the characteristics given in the text and images in this document are not binding until they have been confirmed with us.



This document is printed on eco-friendly paper

Photo credits: Schneider Electric
Design and production: Schneider Electric