

Seven ways to modernize your GIS

Make the most of your investment

1 Perform a GIS self-evaluation

- > Does your GIS do what you want?
- > Does it leverage the cloud, imagery, smartphones, and tablets?
- > Can you streamline your editing processes?

If you answered no, it's time for a change.

2 Solve business problems with it

Pair it with data and other programs to:

- > Identify unsafe areas for crews
- > Map unhappy customers' tweets
- > Improve your planning and response

3 Think about it as a platform

Easily integrate your GIS with other systems:

- > Support business systems with location-based data
- > Quickly and securely share information
- > Elevate and simplify your information technology architecture

4 Stop building custom applications

GIS is about configuration, not customization:

- > Spatial and location analytics come out of the box
- > Templates and applications are available for many workflows
- > Use built-in configuration tools to make it your own

5 Simplify your asset data model

Avoid data duplication:

- > Keep your data in one system
- > If you need it in an application, reference it from elsewhere
- > Use your GIS to display data; it doesn't have to live there

6 Stop creating your own basemaps

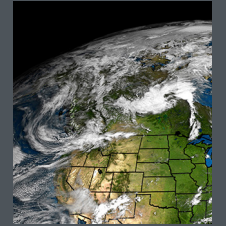
Put an end to inaccuracy:

- > Many maps use pre-GPS data and are inaccurate
- > Save time and aggravation with free basemaps from Esri
- > Ensures you won't have to store, manage, or edit the data

7 Implement relevant, accessible solutions

Make sure they work inside and outside:

- > Make your GIS content ubiquitous
- > Quickly and easily implement new functions via Web services
- > Be certain they work outside of your company walls



Utility GISs have been around since the mid-1970s — that's 40 years worth of maturity. That's the good news. The bad news is that many utilities have become so comfortable with their legacy GISs that they don't think about the considerable benefits of a modern GIS. Here are seven ways to modernize your own GIS.



For more information download our white paper "Unleash the Power of Your GIS" at: tvt.schneider-electric.com/go/7ways_GIS.

Schneider
Electric