



Keeping homes and businesses powered up with a APC UPS

It's easy to take energy for granted. It helps keep us warm, safe, productive, clean, fulfilled, and healthy. However, the latest indicators show that Europe is preparing itself for a winter of uncertainty as the region strives to guarantee sufficient levels of energy to power itself through this coming winter. The European media has been covering this worrying scenario on an almost daily basis, with sources like Bloomberg Europe* predicting that power outages are 'the next threat for the continent'.

As a leading APC UPS manufacturer, Schneider Electric is helping to protect critical IT applications within homes and businesses across Europe. So, even if we experience power fluctuations or blackouts over these coming months, rest assured we can keep you powered up and productive through this uncertain period.

*Bloomberg Article « [Europe Prepares Blackout Plans to Head Off Winter Energy Chaos](#) », September 15, 2022

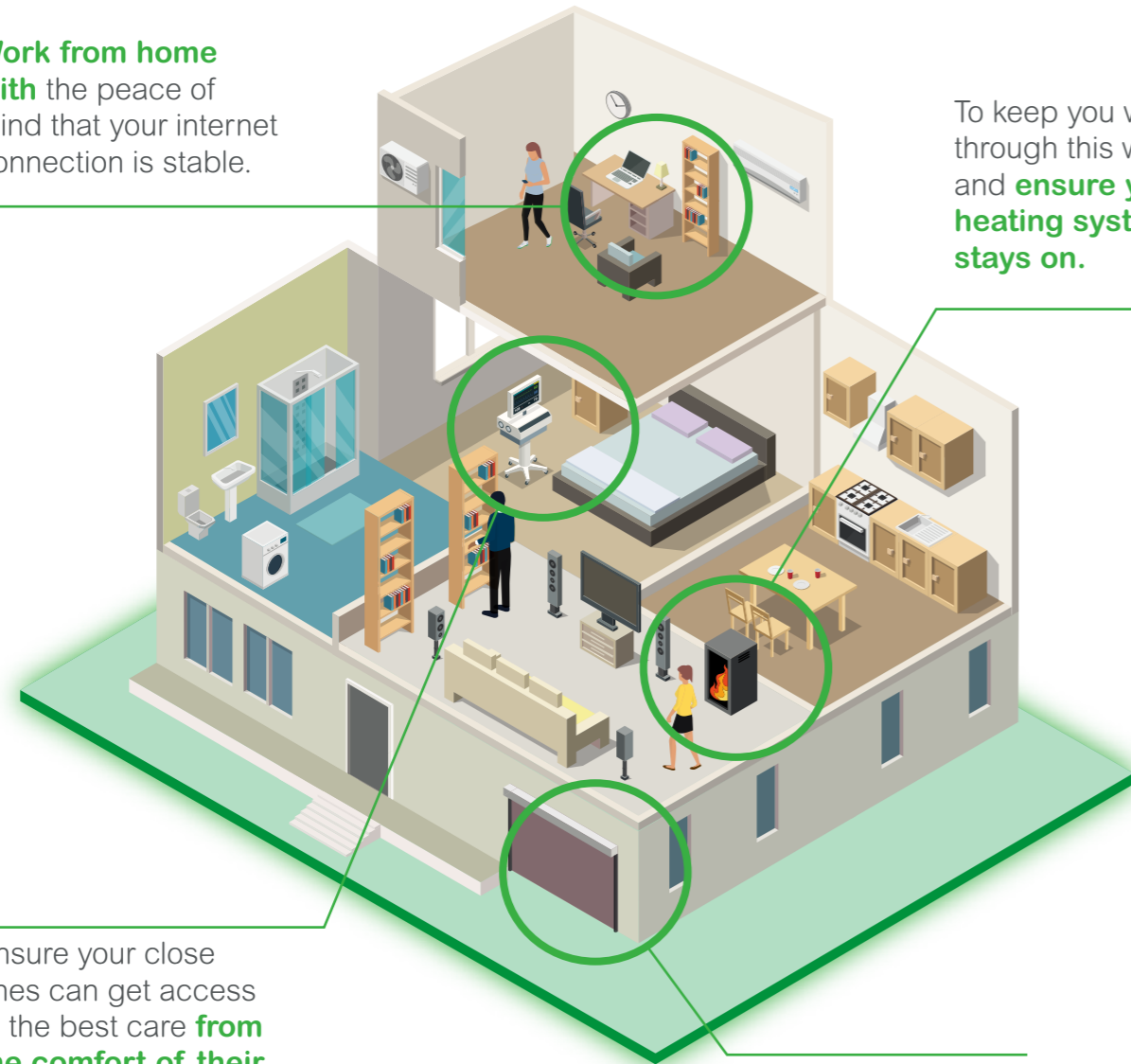
apc.com

Life Is On

Schneider
Electric

Uninterrupted power in the home

Work from home with the peace of mind that your internet connection is stable.



To keep you warm through this winter and **ensure your heating system stays on.**

Ensure your close ones can get access to the best care **from the comfort of their home.**

And ensure you have 24/7 access in and around your house: including for your garage door and electric blinds.



Reliable access management



	Estimated power (watts)	Autonomy*	Reference**
Automatic blinds (less than 5 windows)	150W	Circa 10x open and close	BX1600MI-GR
Automatic blinds (more than 5 windows)	150W	Circa 10x open and close	BX2200MI-GR
Lighting	10W	1h	BX1600MI-GR
Electric gate	150W	Circa 5x open and close	BX1600MI-GR
Garage door	500W	Circa 5x open and close	BX1600MI-GR



Ensure home-office connectivity



	Estimated power (watts)	Autonomy*	Reference**
ADSL Router	17W	2h30	BX750MI-GR
Laptop	40W	1h	
Printer	50 W	1h	



Protect your heating equipment



	Estimated power (watts)	Autonomy*	Reference**
Pellets or fuel Boiler	100W	1h30	BX2200MI-GR
Pellets burning stove	30W	2h30	



Protect your medical devices***



	Estimated power (watts)	Autonomy*	Reference**
Medical Bed	90W	60 movements	BX1600MI-GR
CPAP Machine	45W	2h	BX1600MI-GR

*The autonomy values given are an indication. This depends on the power of the equipment to be protected and how it is used. The power of the device to be protected should be checked by a qualified electrician if necessary. Schneider Electric cannot be held liable in the event of a malfunction or lack of autonomy.

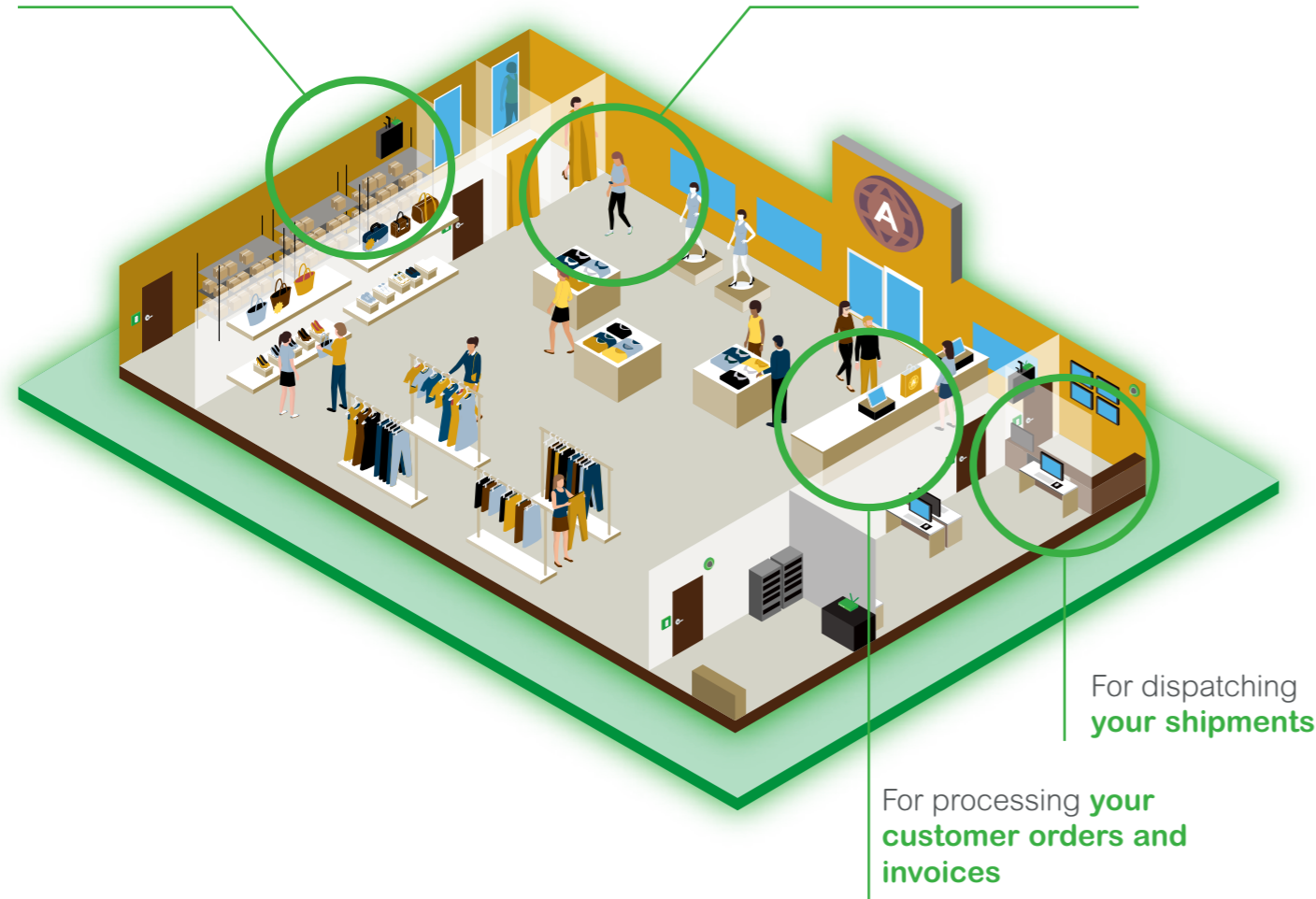
**Also available with French outlets (FR)

***To comply with the EMC standard: IEC/EN 60601-1-2, the UPS should be installed more than 2 meters from the patient.

Uninterrupted power for the workplace

To manage and access **your stock**

To avoid disruption to **your business calls**



For dispatching **your shipments**

For processing **your customer orders and invoices**



Process customer orders and invoices



	Estimated power (watts)	Autonomy*	Reference
Cashier and Payment Terminal	100 W	2h	SMT1000IC
VOIP Phone	15 W	2h	SMV750CAI
Wifi repeater	17 W	1h30	SMV750CAI
Router	15 W	2h	SMV750CAI
PC + Screen	120 W	2h30	SMX750I



Protect your assets



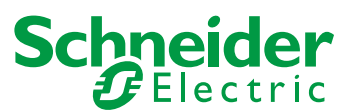
	Estimated power (watts)	Autonomy*	Reference
Security and CCTV	330W	1h30	SMT2200IC
Sliding doors	150W	Circa 300 open & close (1kVA) Circa 600 open & close (2kVA)	SRV1KI / SRV2KI

*The autonomy values given are an indication. This depends on the power of the equipment to be protected and how it is used. The power of the device to be protected should be checked by a qualified electrician if necessary. Schneider Electric cannot be held liable in the event of a malfunction or lack of autonomy.



To find out more and select your UPS, go to the online selector:
https://www.apc.com/shop/uk/en/tools/ups_selector

Life Is On



se.com

Schneider Electric
35, rue Joseph Monier - CS30323
F92506 Rueil Malmaison Cedex

Conseils : 0825 012 999
Services : 0810 102 424

© 2021 Schneider Electric. All rights reserved. Life Is On Schneider Electric is a commercial trademark owned by Schneider Electric SE, its subsidiaries and its affiliated companies. Owing to changes in the standards and equipment, the characteristics given in the text and images of this document are only binding after confirmation by us.

Life is On - Design: Stéphane Desprez - Photos: Shutterstock / Rawpixel.com

12/2022