

GENERAL NOTES

- TYPE 3R/3RX, FREE STANDING, FLOOR MOUNTED ENCLOSURE.
 - TYPE 3R MANUFACTURED FROM CODE GAUGE STEEL.
 - TYPE 3RX EXTERIOR MANUFACTURED FROM CODE GAUGE TYPE 304 STAINLESS STEEL.
- ALL DOORS HAVE LOCKABLE HANDLES WITH COMMON KEYING AND CAPTIVE SCREWS AS REQUIRED.
- FINISH: TYPE 3R - ANSI 61 GRAY POLYESTER SEMI GLOSS ELECTROSTATIC POWDER.
TYPE 3RX - STAINLESS STEEL EXTERIOR HAS A 2B FINISH.
- RECOMMENDED CLEARANCES:
FRONT: 38 INCHES, REAR: NONE
- ALL BUS IS SILVER-PLATED COPPER, BASED ON 1000A PER SQ. IN. DENSITY.
- A FULL RATED NEUTRAL CONNECTION FOR EACH SOURCE AND THE LOAD IS OPTIONAL.
WHEN PROVIDED IT IS IN ONE OF THE FOLLOWING FORMATS AS SPECIFIED BY THE CATALOG NO.
 - SOLID (COPPER BUS) NEUTRAL (SHOWN) (PROVIDED STANDARD ON H3AUS)
 - SWITCHED NEUTRAL POLE
- DESIGNED FOR FRONT ACCESS.
- FOR SPECIFIED TRANSFER SWITCH, REFER TO OPERATOR'S MANUAL PROVIDED WITH UNIT.
- SECTION 1 & SECTION 2 SHIP AS 1 UNIT (NO SHIPPING SPLIT).
SECTION 1 & SECTION 2 ARE MOUNTED INSIDE TYPE 3R/3RX ENCLOSURE.
- LIFTING PLATES: SECTIONS ARE SUPPLIED WITH LIFTING PLATES. INSPECT PLATES FOR DAMAGE AND TORQUE BOLTS TO 45 FT LBS BEFORE USE. REFER TO ANSI/NEMA PB 2.1 FOR PROPER HANDLING OF EQUIPMENT. AFTER INSTALLATION OF SECTION, REMOVE LIFTING PLATES. REINSTALL BOLTS INTO EXTERIOR HOLES AND TORQUE TO APPROXIMATELY 20 FT LBS.

SPECIFICATIONS

- SERVICE VOLTAGE:
SYSTEM RATING: 450 AMPS, 500 AMPS, 600 AMPS, 3 ϕ , 4W OR 1 ϕ , 3W.
GROUND BUS- 20% RATED BUS IS PROVIDED.
SHORT CIRCUIT RATING- 50,000 RMS SYM AMPERES @ 480V (LOWEST RATED DEVICE)
SHORT CIRCUIT RATING- 65,000 RMS SYM AMPERES @ 240V (LOWEST RATED DEVICE)
THE EMERGENCY SOURCE INPUT MUST BE PROTECTED BY A REMOTE OVERCURRENT PROTECTION DEVICE AS LISTED ON THE MARKINGS ON THE TRANSFER SWITCH.
- NEUTRAL BUS: 100% RATED
- APPLICABLE LABELS: U.L. 891- SUITABLE ONLY FOR USE AS SERVICE EQUIPMENT.

CABLING NOTES

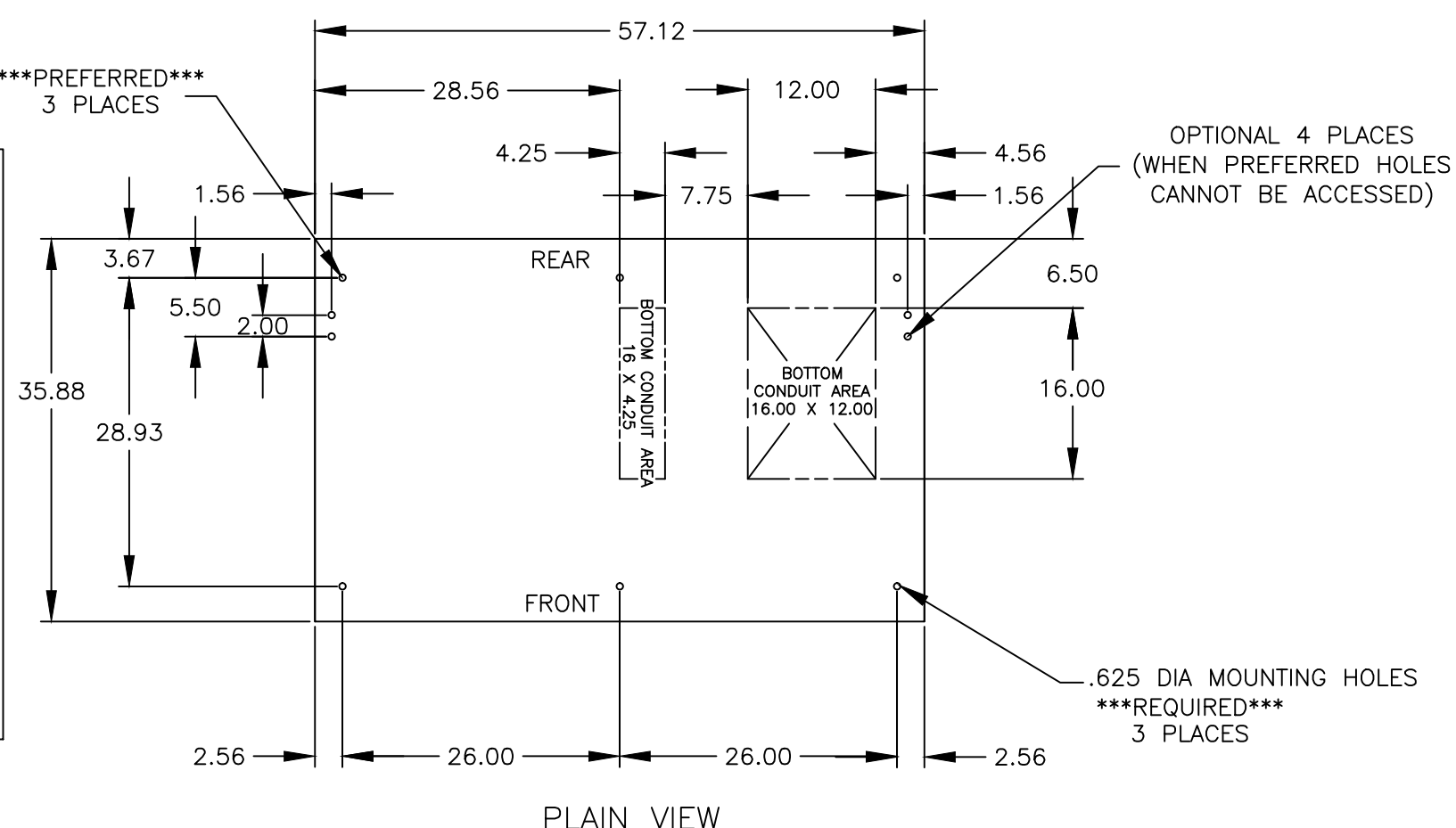
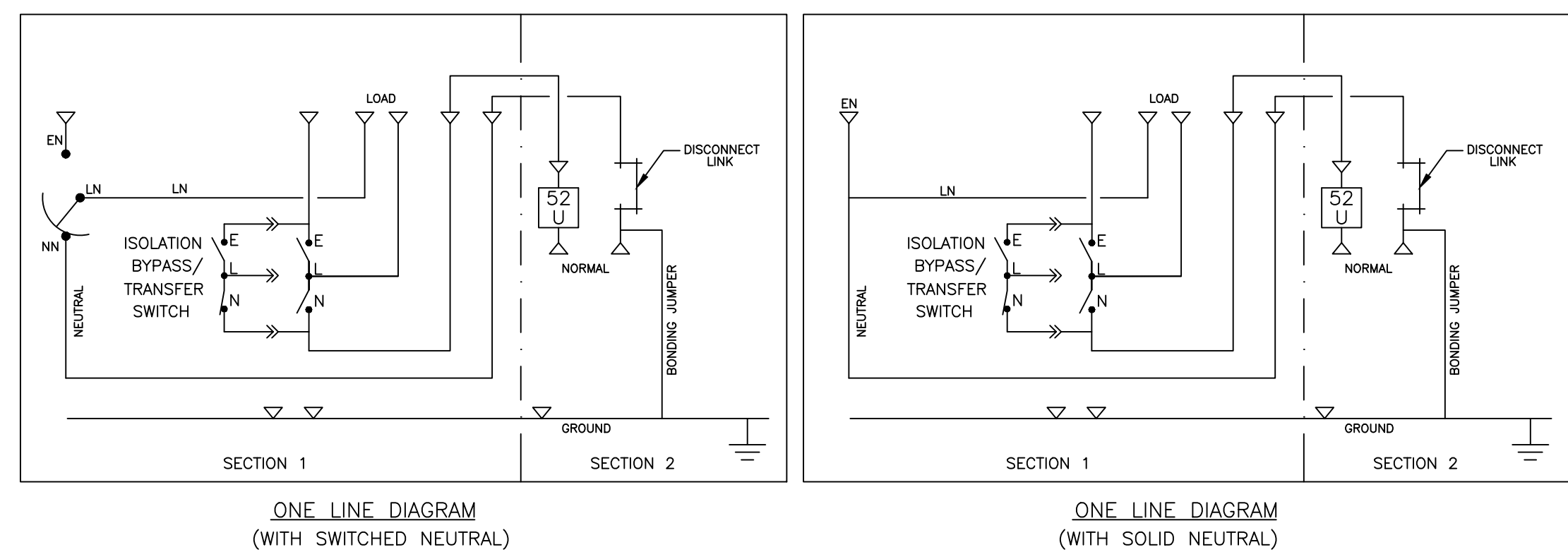
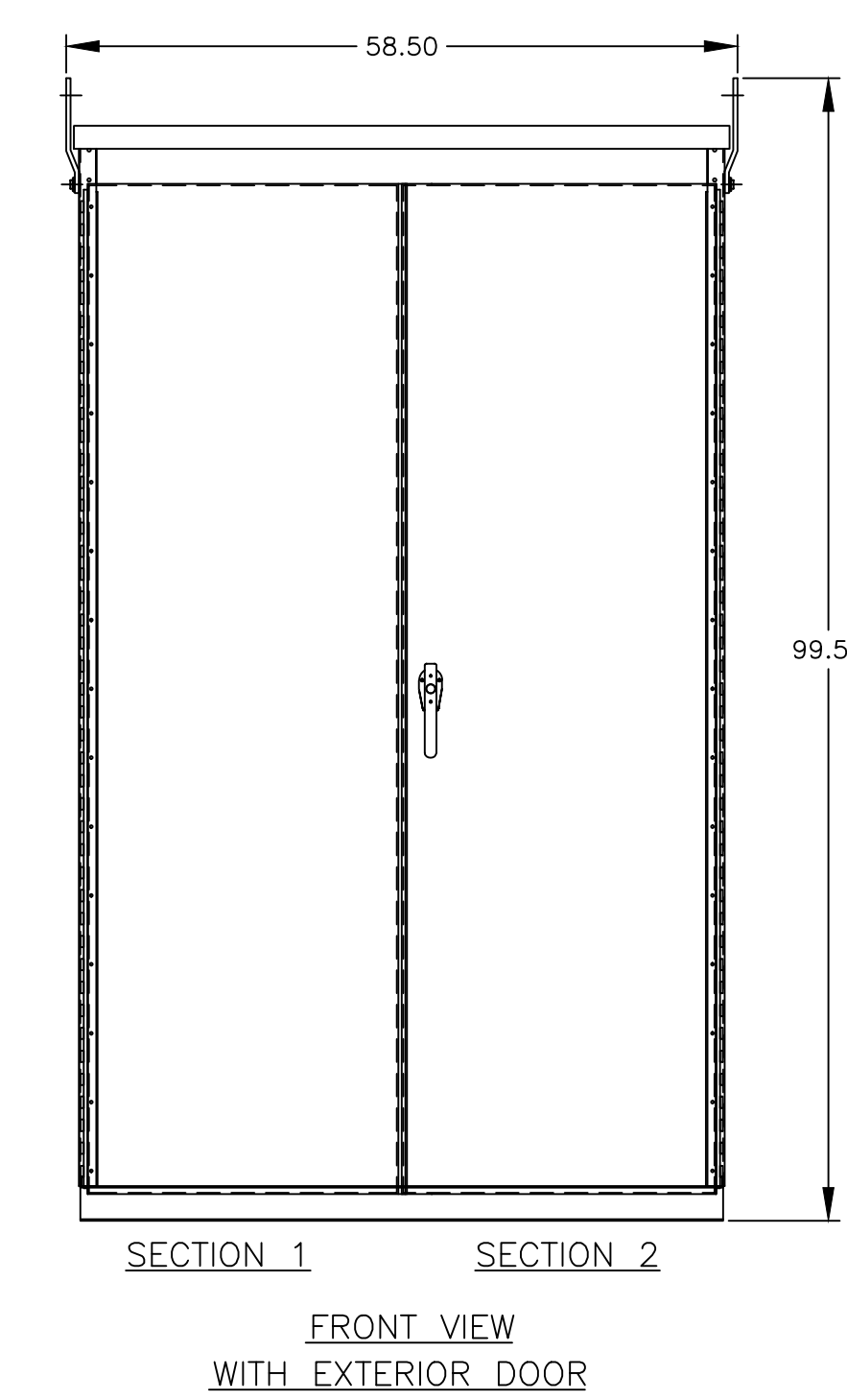
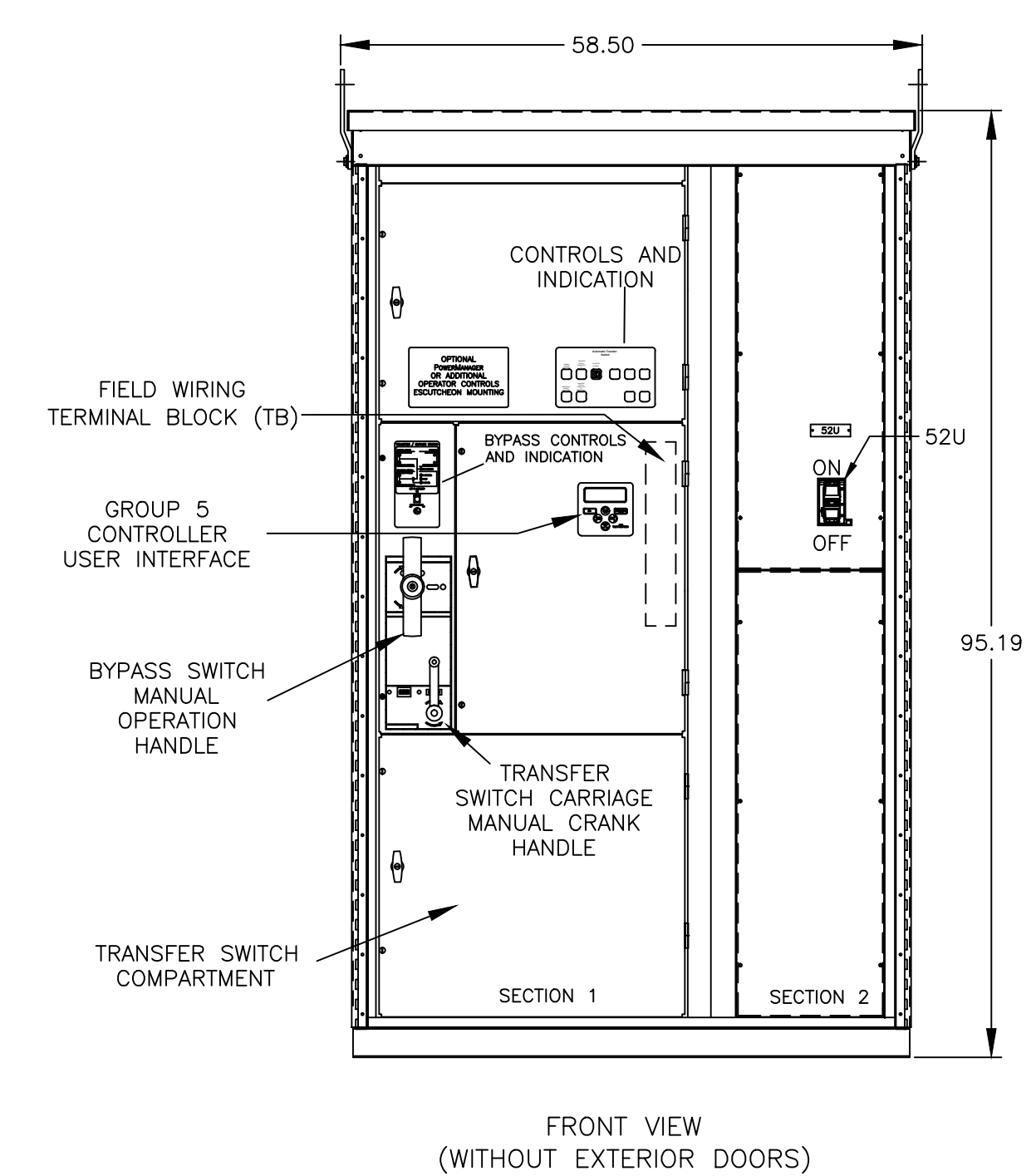
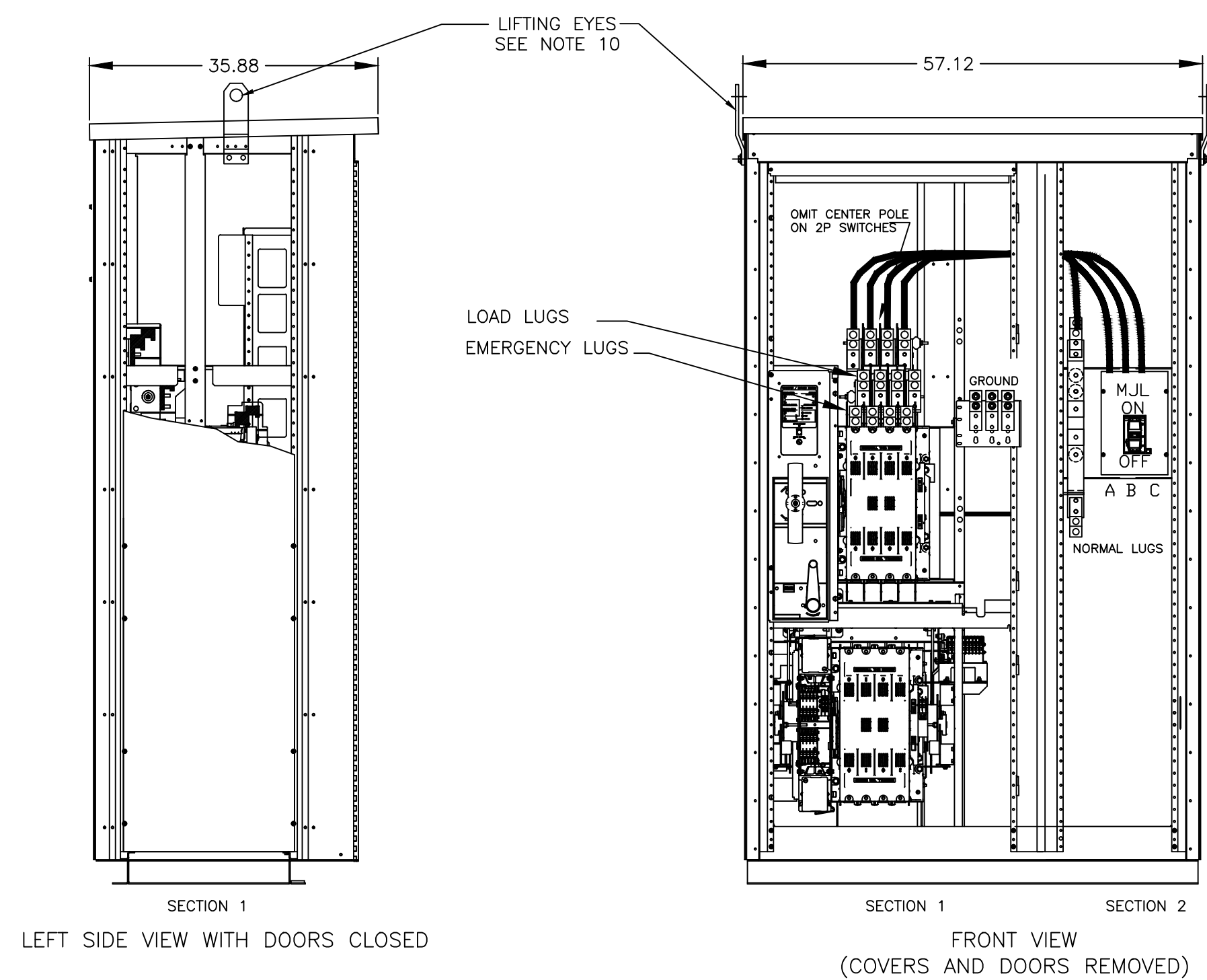
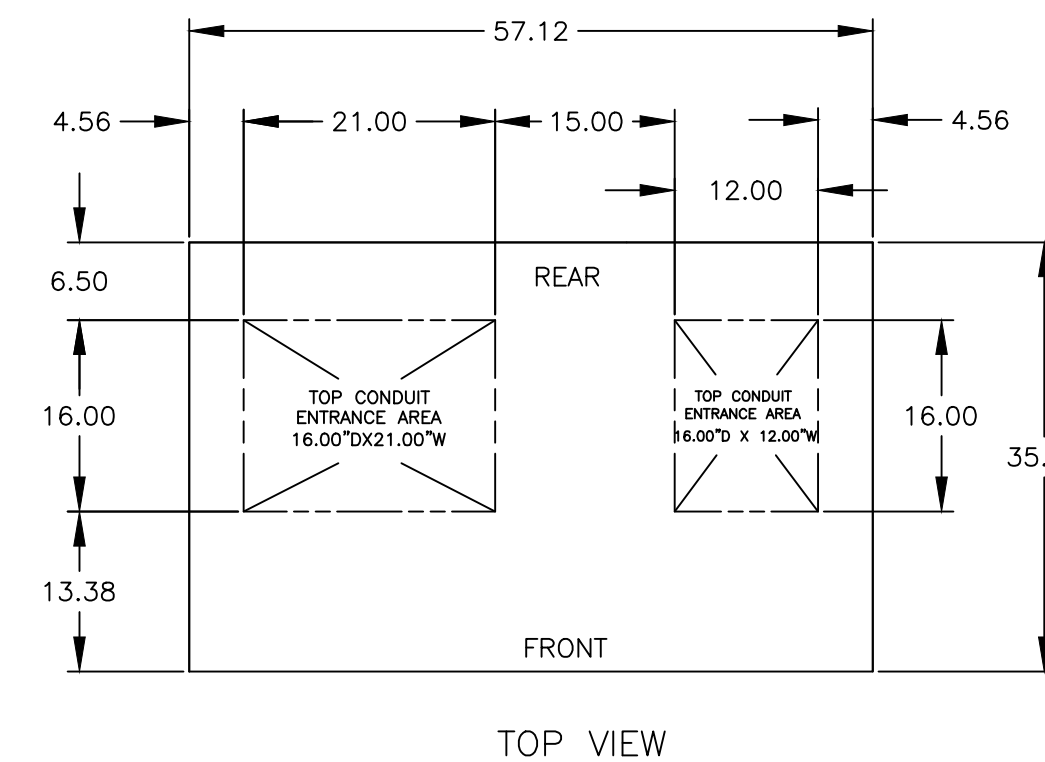
- ALL SIZES SUPPLIED STANDARD WITH MECHANICAL (SCREW TYPE) LUGS. (SEE AMP SIZE BELOW)
 - LUG MATERIAL: ALUMINUM ALLOY 6061-T6 WITH ELECTRO TIN PLATED FINISH.
 - SCREW MATERIAL: ALUMINUM ALLOY 6262-T9 WITH ELECTRO TIN PLATED FINISH.
 - UL LISTED, CSA CERTIFIED.
 - LUG SCREW TIGHTENING TORQUE PER UL 486B: 19 FT-LBS.
 - SUITABLE WIRE BENDING SPACE IS PROVIDED. (AS PER NEC)
- OPTIONAL COPPER CRIMP LUGS MAY BE SUPPLIED. (SEE AMP SIZE BELOW)
 - LUG MATERIAL: HIGH CONDUCTIVITY WROUGHT COPPER FINISH, ELECTRO TIN PLATED.
 - UL LISTED, CSA CERTIFIED.
 - LUG MOUNTING HARDWARE TIGHTENING TORQUE: (REFER TO WITHSTAND CURRENT RATING LABEL PROVIDED ON EACH TRANSFER SWITCH).
 - SUITABLE WIRE BENDING SPACE IS PROVIDED. (AS PER NEC)
- CONSULT FACTORY FOR OTHER TERMINATION REQUIREMENTS.

NOTES 450A-600A

- SUPPLIED WITH STANDARD MECHANICAL (SCREW TYPE) LUGS ON THE LOAD & EMERGENCY.
ONE (1) LUG PER PHASE AND NEUTRAL EACH SUITABLE FOR CONNECTION OF (2) #2-600MCM CU/AL CABLE.
- SUPPLIED WITH STANDARD MECHANICAL (SCREW TYPE) LUGS ON THE NORMAL.
ONE (1) LUG PER PHASE AND NEUTRAL EACH SUITABLE FOR CONNECTION OF (3) #3/0-500MCM CU/AL CABLE.
 - SUITABLE WIRE BENDING SPACE IS PROVIDED AS PER NEC.
- GROUND LUGS ARE PROVIDED STANDARD AS BELLOW :-
THREE (3) LUGS, EACH SUITABLE FOR CONNECTION OF (3) #4-600MCM CU/AL CABLE

CIRCUIT BREAKER: ITEM 52U

SQUARE "D" 80% RATED TYPE "MJL", 800AF/450AT, 800AF/500AT, 800AF/600AT, MOLDED CASE CIRCUIT BREAKER, ELECTRONIC TRIP.



REV. NO.	SY	RN	12/12/16
A	249723	SG	RN
B	248282	BG	RN
-			
NEW ISSUE			
REV. TO SHEET	ECN NO.	BY	APP. DATE
PROJECT NAME:		MOUNTING	
JAUB 450A-600A, MJL SERVICE ENTRANCE BREAKER ON NORMAL TYPE 3R/3RX, 96 x 57 x 36, FRONT CONNECTED			
DRAWN BY	BG	DATE	11-13-13
CHECKED	RN		
PROJECT APPROVAL			
FINAL APPROVAL			
MANUFACTURING TOLERANCES TO BE IN ACCORDANCE WITH ASCO PROCEDURE MP-1-003. FOR PLASTIC PARTS SEE MP-1-005.		ASSEM. REF. NO.	
PROPERTY OF ASCO POWER TECHNOLOGIES. USE PERMITTED FOR OUR WORK ONLY. ALL RIGHTS OF DESIGN OR INVENTION ARE RESERVED.		SCALE	1/8" = 1" SIZE DS
ASCO POWER TECHNOLOGIES, L.P. FLORHAM PARK, NEW JERSEY 07932 U.S.A.		DWG. NO.	882340-023
DRAWING B	ECN NO.	264587	SHEET 1 OF 1