

GENERAL NOTES

- TYPE 3R/3RX, FREE STANDING, FLOOR MOUNTED ENCLOSURE.
 - TYPE 3R MANUFACTURED FROM CODE GAUGE STEEL.
 - TYPE 3RX EXTERIOR MANUFACTURED FROM CODE GAUGE TYPE 304 STAINLESS STEEL.
- ALL DOORS HAVE LOCKABLE HANDLES WITH COMMON KEYING AND CAPTIVE SCREWS AS REQUIRED.
- FINISH: TYPE 3R - ANSI 61 GRAY POLYESTER SEMI GLOSS ELECTROSTATIC POWDER.
TYPE 3RX - STAINLESS STEEL EXTERIOR HAS A 2B FINISH.
- RECOMMENDED CLEARANCES:
FRONT: 38 INCHES, REAR: NONE
- ALL BUS IS SILVER-PLATED COPPER, BASED ON 1000A PER SQ. IN. DENSITY.
- A FULL RATED NEUTRAL CONNECTION FOR EACH SOURCE AND THE LOAD IS OPTIONAL.
WHEN PROVIDED IT IS IN ONE OF THE FOLLOWING FORMATS AS SPECIFIED BY THE CATALOG NO.
 - SOLID (COPPER BUS) NEUTRAL (SHOWN) (PROVIDED STANDARD ON H3AUS)
 - SWITCHED NEUTRAL POLE
- DESIGNED FOR FRONT ACCESS.
- FOR SPECIFIED TRANSFER SWITCH, REFER TO OPERATOR'S MANUAL PROVIDED WITH UNIT.
- SECTION 1 & SECTION 2 SHIP AS 1 UNIT (NO SHIPPING SPLIT).
SECTION 1 & SECTION 2 ARE MOUNTED INSIDE TYPE 3R/3RX ENCLOSURE.
- LIFTING PLATES: SECTIONS ARE SUPPLIED WITH LIFTING PLATES. INSPECT PLATES FOR DAMAGE AND TORQUE BOLTS TO 45 FT LBS BEFORE USE. REFER TO ANSI/NEMA PB 2.1 FOR PROPER HANDLING OF EQUIPMENT. AFTER INSTALLATION OF SECTION, REMOVE LIFTING PLATES. REINSTALL BOLTS INTO EXTERIOR HOLES AND TORQUE TO APPROXIMATELY 20 FT LBS.

SPECIFICATIONS

- SERVICE VOLTAGE:
SYSTEM RATING: 150 AMPS, 175 AMPS, 200 AMPS, 225 AMPS, 250 AMPS,
300 AMPS, 350 AMPS, 400 AMPS, 3Ø, 4W OR 1Ø, 3W.
GROUND BUS- 20% RATED BUS IS PROVIDED.
SHORT CIRCUIT RATING- 35,000 RMS SYM AMPERES @ 480V (LOWEST RATED DEVICE)
SHORT CIRCUIT RATING- 65,000 RMS SYM AMPERES @ 240V (LOWEST RATED DEVICE)
THE EMERGENCY SOURCE INPUT MUST BE PROTECTED BY A REMOTE OVERCURRENT PROTECTION DEVICE AS LISTED ON THE MARKINGS ON THE TRANSFER SWITCH.
- NEUTRAL BUS: 100 % RATED.
- APPLICABLE LABELS: U.L. 891- SUITABLE ONLY FOR USE AS SERVICE EQUIPMENT.

CABLING NOTES

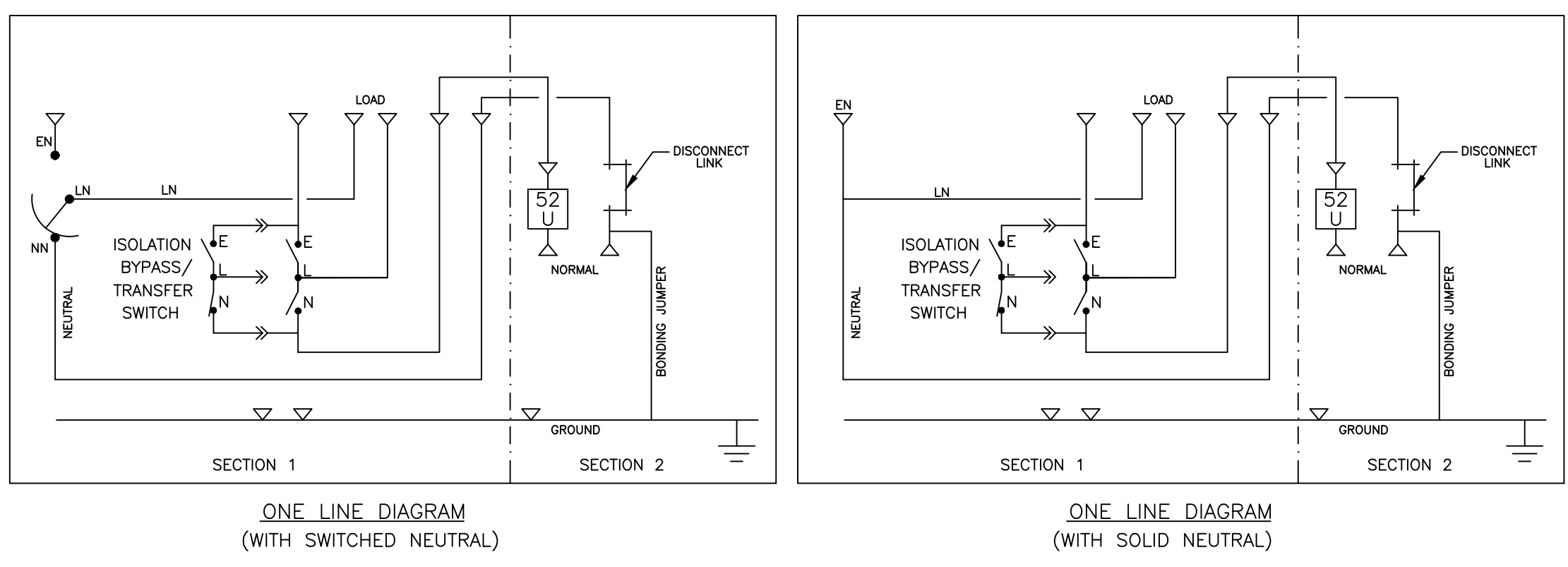
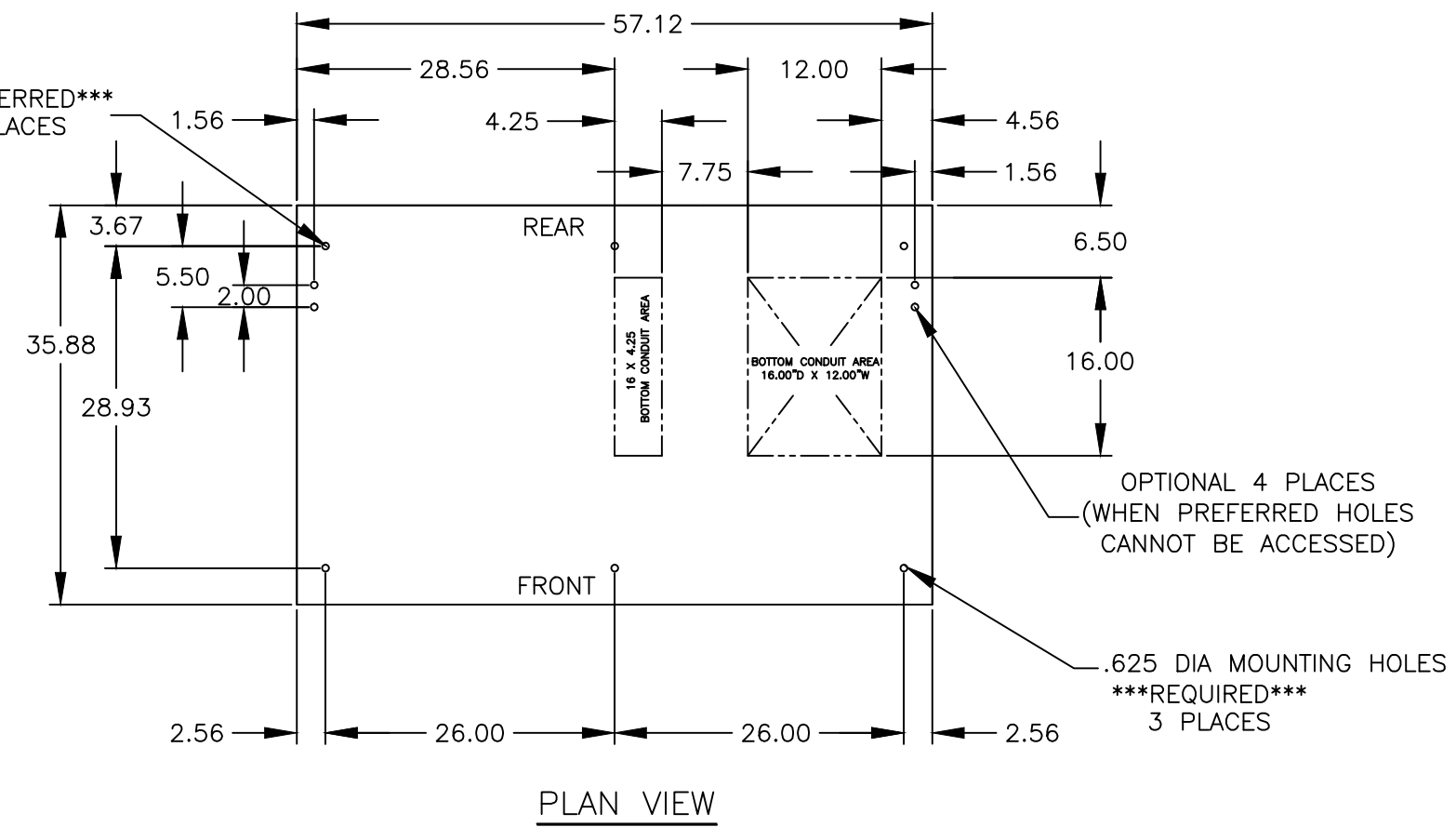
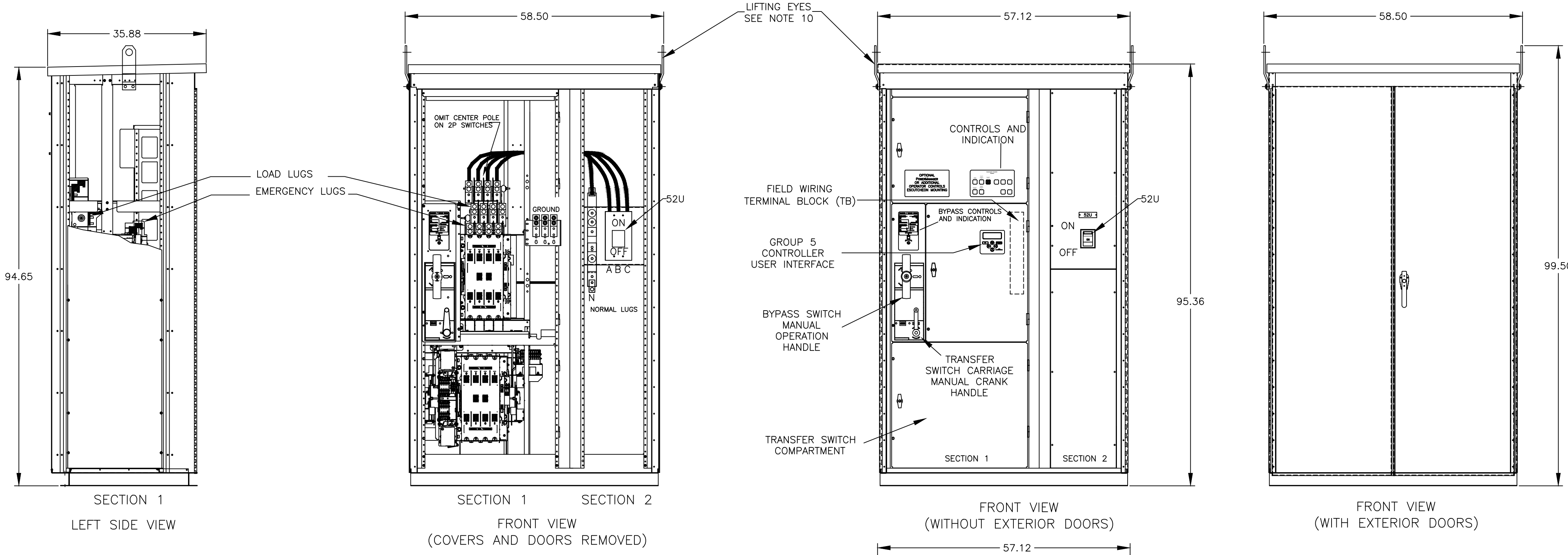
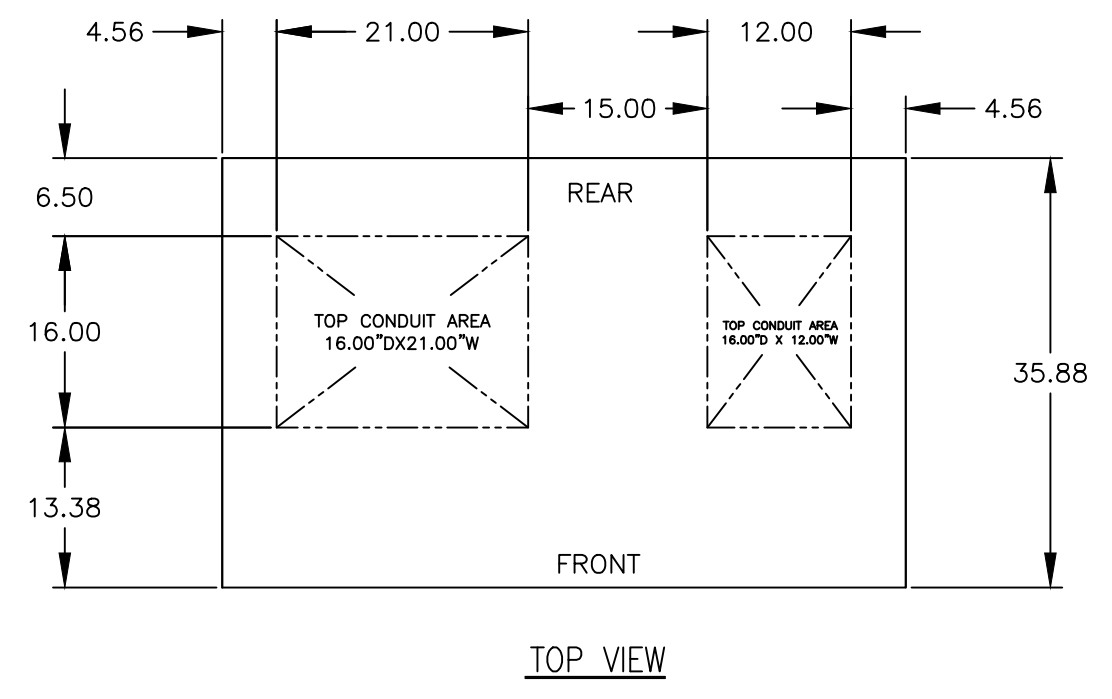
- ALL SIZES SUPPLIED STANDARD WITH MECHANICAL (SCREW TYPE) LUGS. (SEE AMP SIZE BELOW)
 - LUG MATERIAL: ALUMINUM ALLOY 6061-T6 WITH ELECTRO TIN PLATED FINISH.
 - SCREW MATERIAL: ALUMINUM ALLOY 6262-T9 WITH ELECTRO TIN PLATED FINISH.
 - UL LISTED, CSA CERTIFIED.
 - LUG SCREW TIGHTENING TORQUE PER UL 486B: 19 FT-LBS.
 - SUITABLE WIRE BENDING SPACE IS PROVIDED AS PER NEC.
- OPTIONAL COPPER CRIMP LUGS MAY BE SUPPLIED. (SEE AMP SIZE BELOW)
 - LUG MATERIAL: HIGH CONDUCTIVITY WROUGHT COPPER FINISH, ELECTRO TIN PLATED.
 - UL LISTED, CSA CERTIFIED.
 - LUG MOUNTING HARDWARE TIGHTENING TORQUE: (REFER TO WITHSTAND CURRENT RATING LABEL PROVIDED ON EACH TRANSFER SWITCH).
 - SUITABLE WIRE BENDING SPACE IS PROVIDED AS PER NEC.
- CONSULT FACTORY FOR OTHER TERMINATION REQUIREMENTS.

NOTES 150A - 400A

- SUPPLIED WITH STANDARD MECHANICAL (SCREW TYPE) LUGS ON THE EMERGENCY & LOAD.
ONE (1) LUG PER PHASE AND NEUTRAL EACH SUITABLE FOR CONNECTION OF
(1) #4-600MCM OR (2) 1/0 - 250MCM CU/AL CABLE
- SUPPLIED WITH STANDARD MECHANICAL (SCREW TYPE) LUGS ON THE NORMAL.
ONE (1) LUG PER PHASE AND NEUTRAL EACH SUITABLE FOR CONNECTION OF
(1) #1-600MCM OR (2) #1-250MCM CU/AL CABLE
 - SUITABLE WIRE BENDING SPACE IS PROVIDED AS PER NEC.
- GROUND LUGS ARE PROVIDED STANDARD AS BELLOWS :-
THREE (3) LUGS, EACH SUITABLE FOR CONNECTION OF
TWO (2) 1/0 AWG-250 MCM CU/AL CABLE OR ONE (1) #4-600MCM CU/AL CABLE.

CIRCUIT BREAKER: ITEM 52U

SQUARE "D" 80% RATED TYPE "LHL", 400AF/150AT, 400AF/175AT, 400AF/200AT, 400AF/225AT, 400AF/250AT, 400AF/300AT, 400AF/350AT, 400AF/400AT, MOLDED CASE CIRCUIT BREAKER, THERMAL MAGNETIC, TRIP SETTINGS.



PROJECT NAME:		REV. TO SHEET		ECN NO.	BY	APP.	DATE
OUTLINE		MOUNTING					
JAUB 150A-400A, LHL SERVICE ENTRANCE BREAKER, TYPE 3R/3RX, 96 x 57 x 36, FRONT CONNECTED							
DRAWN BY	SV	DATE	02-04-11	MANUFACTURING TOLERANCES TO BE IN ACCORDANCE WITH ASCO PROCEDURE MP-1-003. FOR PLASTIC PARTS SEE MP-1-005	ASSEM. REF. NO.	COMPUTER GENERATED DRAWING	
CHECKED	RN			PROPERTY OF ASCO POWER TECHNOLOGIES. USE PERMITTED FOR OUR WORK ONLY. ALL RIGHTS OF DESIGN OR INVENTION ARE RESERVED.		SCALE	1/16" = 1" SIZE DS
APPROVAL				843062-028		DWG. NO.	
FINAL APPROVAL				ASCO® ASCO POWER TECHNOLOGIES, L.P. FLOHAM PARK, NEW JERSEY 07932 U.S.A.		ECON 249723 SHEET 10F1	