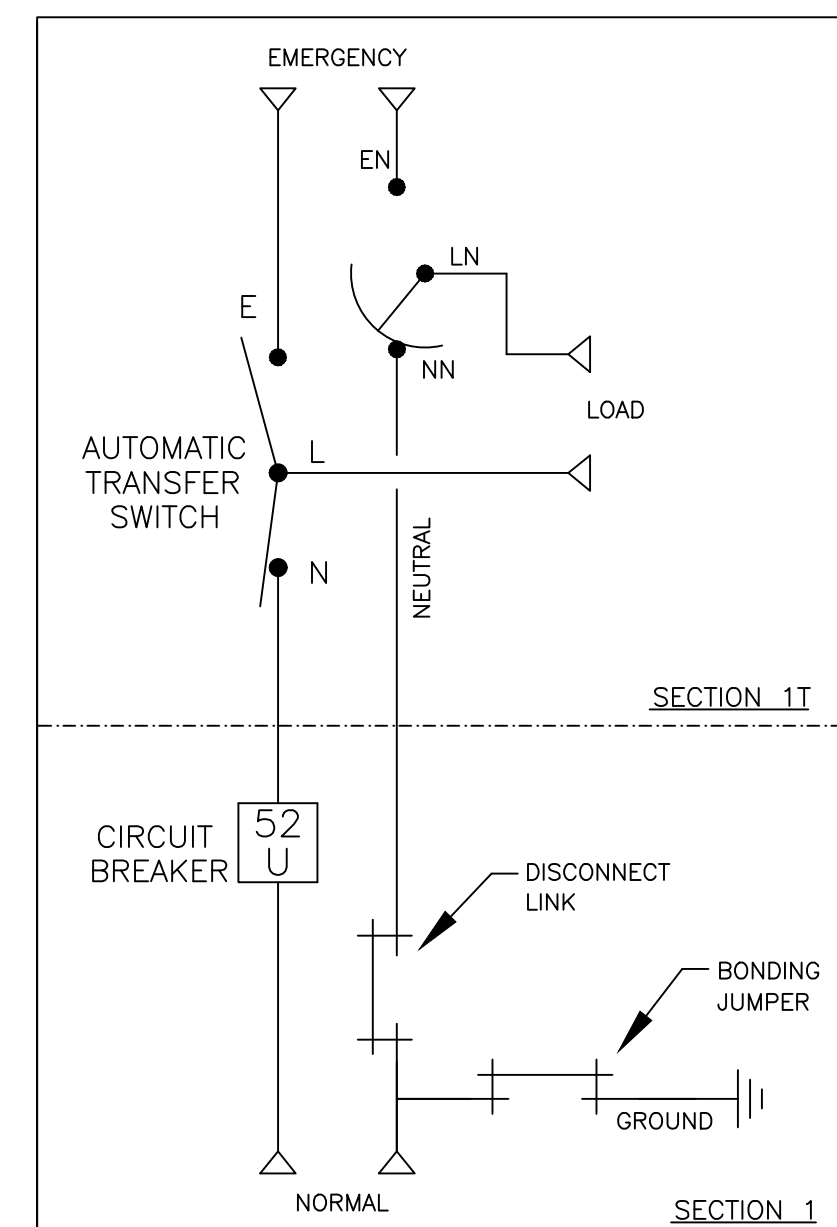
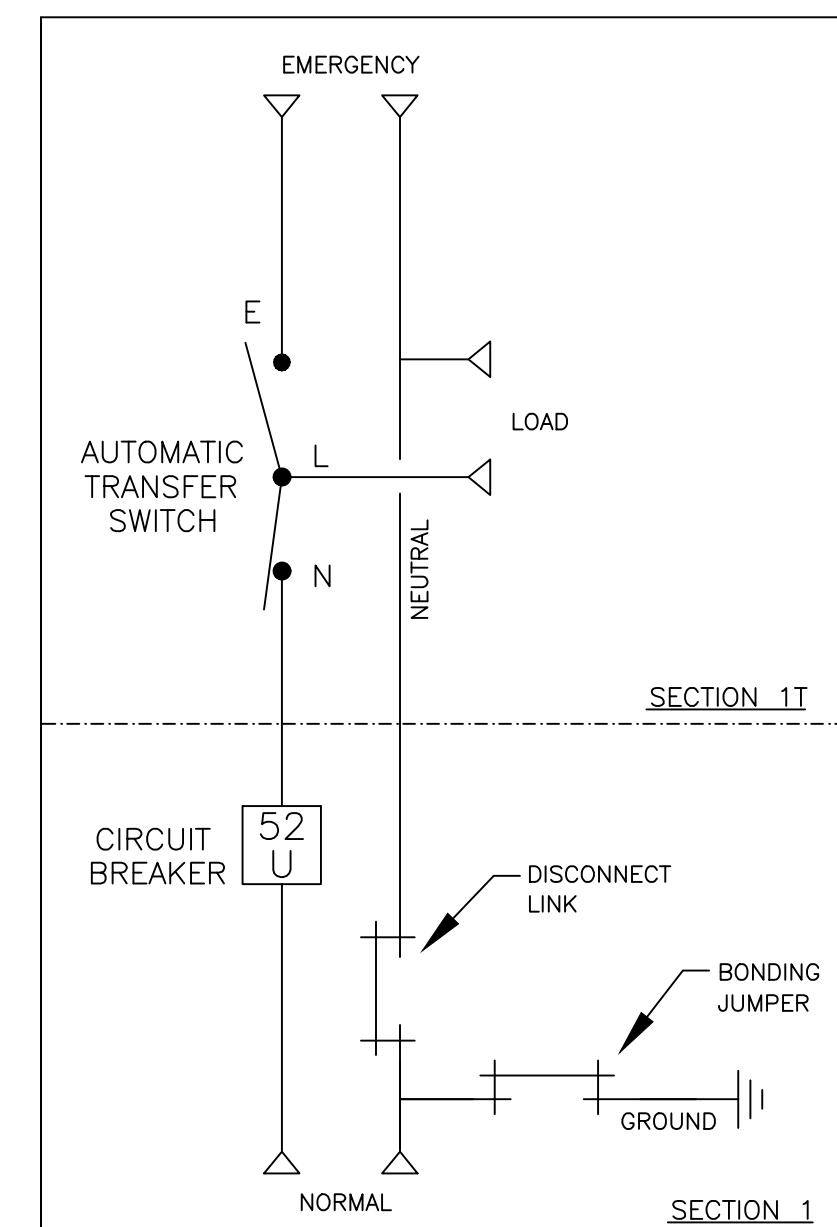


ONE LINE DIAGRAMS



(WITH SOLID NEUTRAL)

(WITH SWITCHED/OVERLAPPING NEUTRAL)

GENERAL NOTES

- FLOOR MOUNTED ENCLOSURE.
TYPE 1 CONSTRUCTED FROM CODE GAUGE STEEL.
FINISH: ANSI 61 GRAY POLYESTER SEMI GLOSS ELECTROSTATIC POWDER.
- DOORS EQUIPPED WITH KEY LOCKABLE HANDLE AND CAPTIVE SCREWS.
- DESIGNED FOR FRONT ACCESS.
- RECOMMENDED CLEARANCES: FRONT: 36" REAR: NONE
- SECTION 1 & SECTION 1T SHIP AS 1 UNIT.

SYSTEM NOTES

- SYSTEM RATING: 800 AMPS.
SHORT CIRCUIT RATING: 65,000 RMS SYM @ 480V.
THE EMERGENCY SOURCE INPUT MUST BE PROTECTED BY A REMOTE OVERCURRENT PROTECTION DEVICE AS LISTED ON THE MARKINGS ON THE TRANSFER SWITCH.
- ALL BUS IS SILVER-PLATED COPPER, BASED ON 1000A PER SQ. IN. DENSITY.
- GROUND: 20% RATED.
- NEUTRAL: 100% RATED.
- APPLICABLE LABEL(S): U.L. 891, SUITABLE ONLY FOR USE AS SERVICE EQUIPMENT.

TRANSFER SWITCH

- H FRAME AUTOMATIC TRANSFER SWITCH 800A.
- TRANSFER SWITCH RATING: 800 AMPS.
SHORT CIRCUIT RATING WHEN PROTECTED BY A CIRCUIT BREAKER
TIME RESPONSE, MAXIMUM 0.05 SECONDS: 50,000 RMS SYM @ 480V.
SPECIFIC BREAKER RATING: 65,000 RMS SYM @ 480V.
- A FULL RATED NEUTRAL CONNECTION FOR EACH SOURCE AND THE LOAD IS OPTIONAL. WHEN PROVIDED IT IS IN ONE OF THE FOLLOWING FORMATS.
 - SOLID NEUTRAL
 - SWITCHED NEUTRAL POLE
 - OVERLAPPING NEUTRAL POLE
- UL 1008

TERMINATIONS 800A

- SUPPLIED WITH MECHANICAL (SCREW TYPE) LUGS FOR CU/AL CABLE.
NORMAL(52U): (3) 3/0 - 500MCM PER PHASE & NEUTRAL
LOAD: (4) 1/0 - 600MCM PER PHASE & NEUTRAL
EMERGENCY: (4) 1/0 - 600MCM PER PHASE & NEUTRAL
GROUND: (12) 1/0 - 600MCM
 - SUITABLE WIRE BENDING SPACE IS PROVIDED AS PER NEC.
- OPTIONAL LUGS MAY BE SUPPLIED.

CIRCUIT BREAKER: ITEM 52U

- SQUARE "D" 80% RATED TYPE 'MJL' MOLDED CASE CIRCUIT BREAKER 800AF/800AT.
ELECTRONIC TRIP UNIT WITH LONG DELAY AND INSTANTENOUS TRIP SETTINGS.
SHORT CIRCUIT RATING: AIC 65,000 RMS SYM @ 480V.
- U.L. 489

B	293045	CHS	RN	12/27/21
SEE ECN				
A	248043	RN		
SEE ECN				
-	225441	SV	RN	12/11/09
REV. TO SHEET	ECN NO.	BY	APP.	DATE

PROJECT NAME:		COMPUTER GENERATED DRAWING	
OUTLINE		MOUNTING	
HAUS 800A, MJL SERVICE ENTRANCE BREAKER			
TYPE 1 91 X 38 X 28			
SCALE	1:1	SIZE	DS
DWG. NO.	882322-001		SHEET
PROJECT APPROVAL	REV.	ECN NO.	293045
FINAL APPROVAL	REV.	ECN NO.	293045
MANUFACTURING TOLERANCES TO BE IN ACCORDANCE WITH ASCO PROCEDURE MP-1-003. FOR PLASTIC PARTS SEE MP-1-055		ASSEM. REF. NO.	
PROPERTY OF ASCO POWER TECHNOLOGIES. USE PERMITTED FOR OUR WORK ONLY. ALL RIGHTS OF DESIGN OR INVENTION ARE RESERVED.			
ASCO		ASCO POWER TECHNOLOGIES, LP. FLORHAM PARK, NEW JERSEY 07932 U.S.A.	