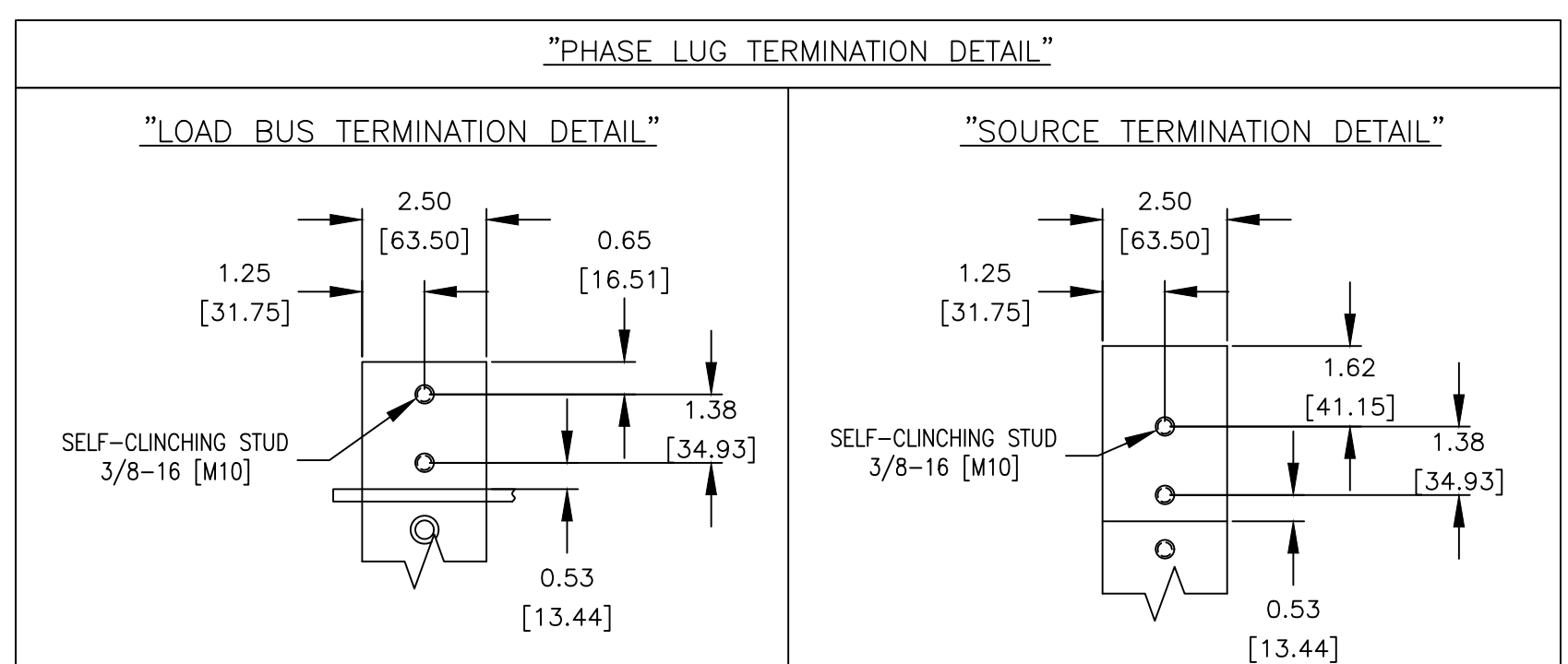
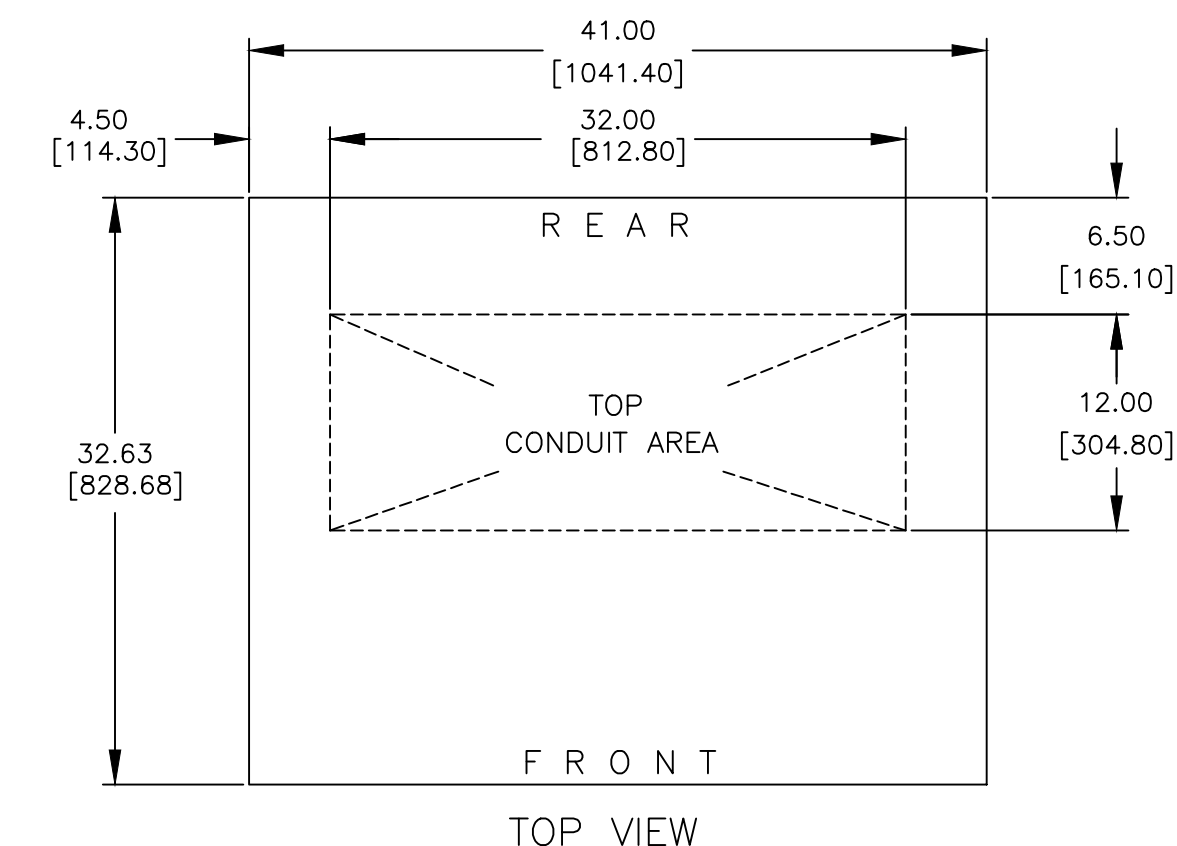


D

C

B

A



GENERAL NOTES

- FLOOR MOUNTED ENCLOSURE.
TYPE 3R (M) CONSTRUCTED FROM CODE GAUGE STEEL.
FINISH TYPE: ANSI 61 GRAY POLYESTER SEMI GLOSS ELECTROSTATIC POWDER.
TYPE 3R (R) EXTERIOR CONSTRUCTED FROM CODE GAUGE TYPE 304 STAINLESS STEEL.
TYPE 3RX (S) EXTERIOR CONSTRUCTED FROM CODE GAUGE TYPE 316 STAINLESS STEEL.
- EXTERIOR DOOR HAVE PADLOCKABLE HANDLES WITH 3-POINT LATCH
- DESIGNED FOR FRONT ACCESS.
- RECOMMENDED CLEARANCES: FRONT: 36 [914.40] REAR: NONE.
- EXTERIOR VENTS ARE SUPPLIED WITH POLYESTER DUST FILTERS.
- LIFTING PLATES: SECTIONS ARE SUPPLIED WITH LIFTING PLATES. INSPECT PLATES FOR DAMAGE AND TORQUE BOLTS TO 45 FT LBS [61 N m] BEFORE USE. REFER TO ANSI/NEMA PB 2.1 FOR PROPER HANDLING OF EQUIPMENT. AFTER INSTALLATION OF SECTION, REMOVE LIFTING PLATES. REINSTALL BOLTS INTO EXTERIOR HOLES AND TORQUE TO APPROXIMATELY 20 FT LBS [27 N m].
- ⊙ CENTER OF GRAVITY
- APPROXIMATE SHIPPING WEIGHT: 1290 LB [585 KG].
- ACCESSORY 40, OPTIONAL LOAD AND SOURCE LOCATIONS IS AVAILABLE ON SERIES 7000 ONLY.

TRANSFER SWITCH

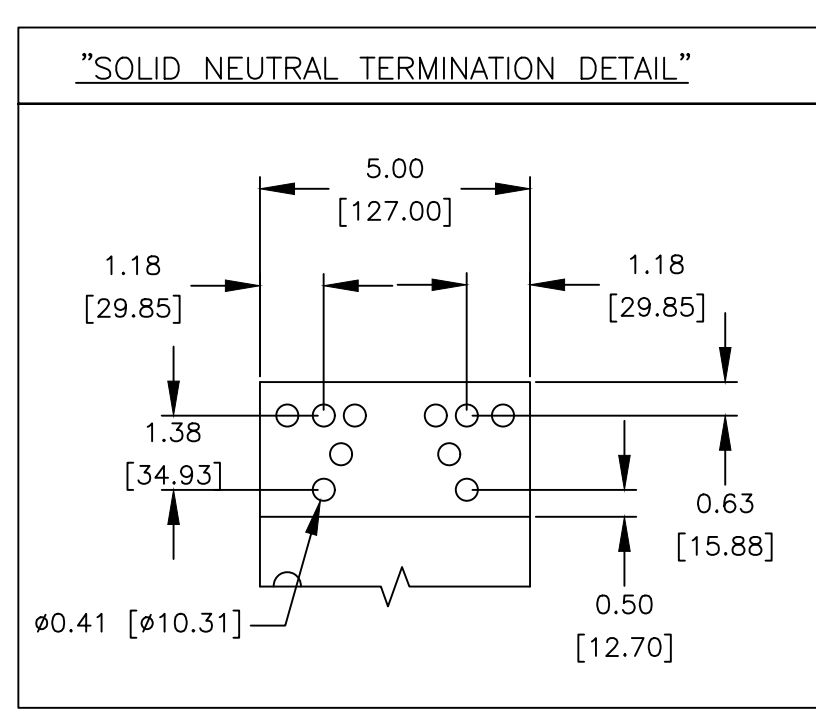
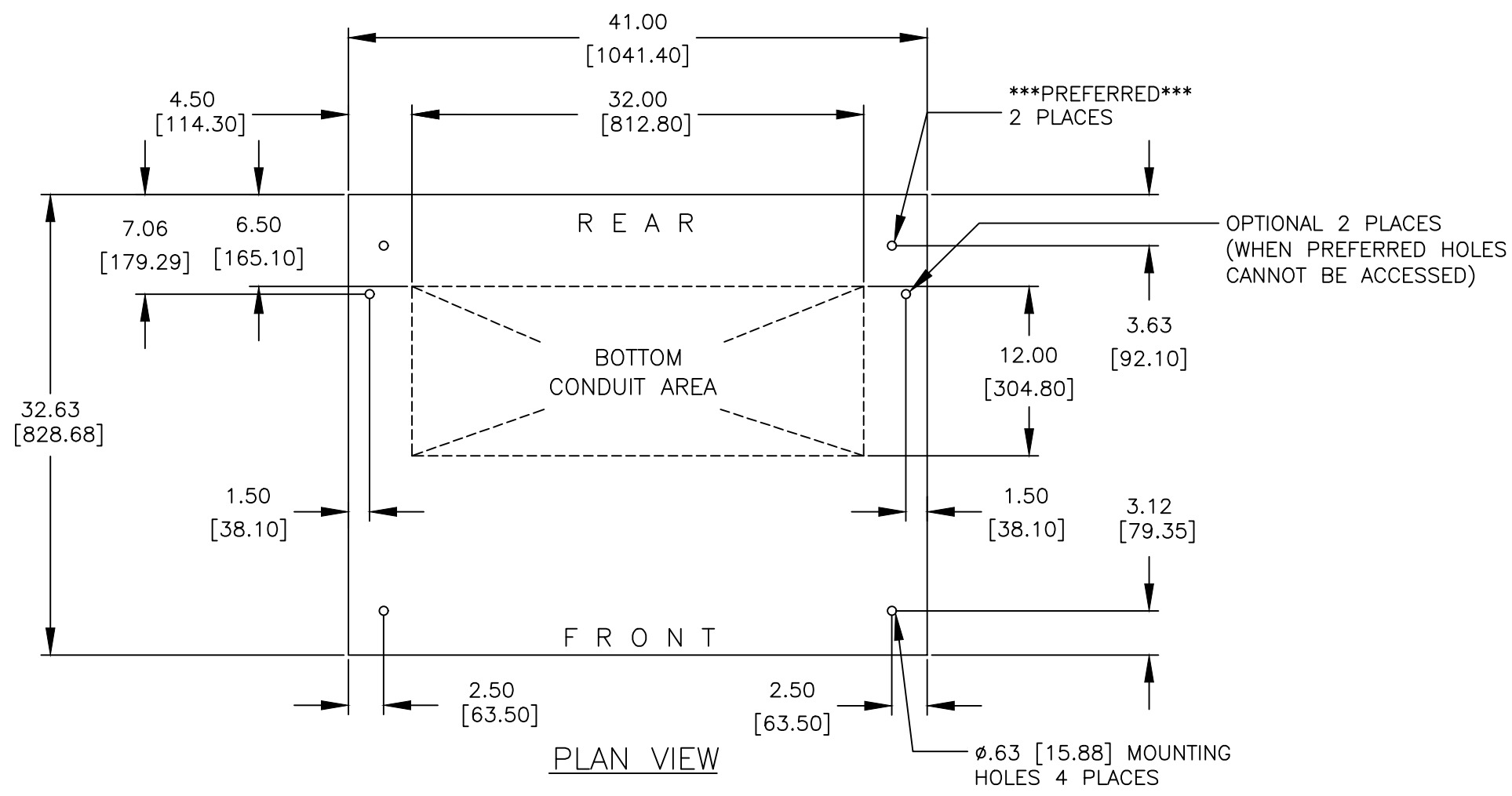
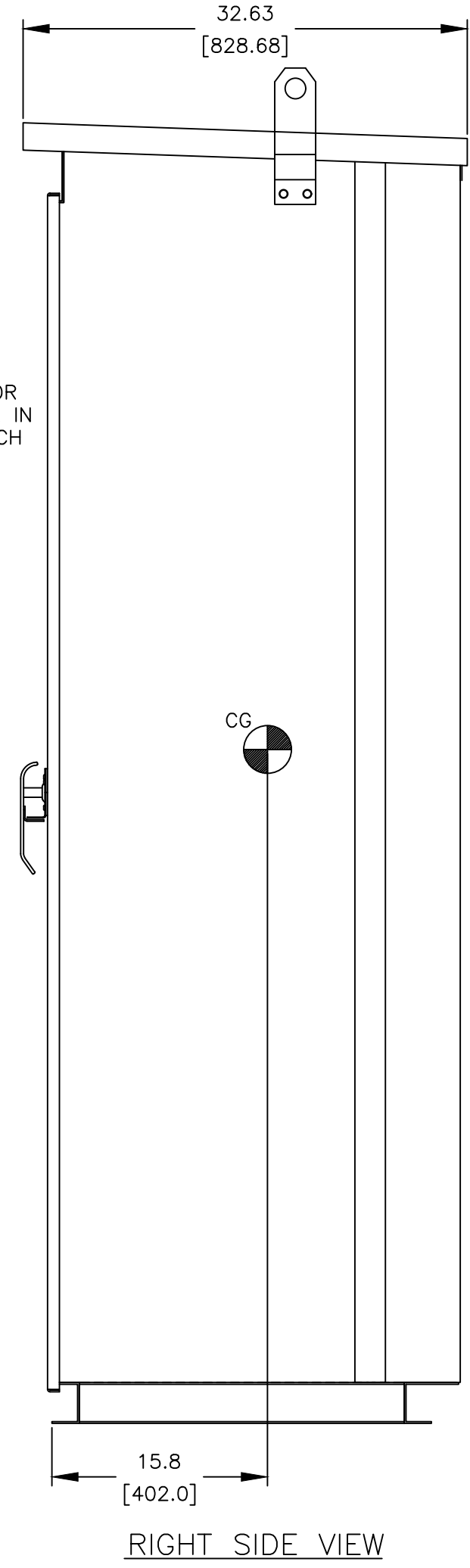
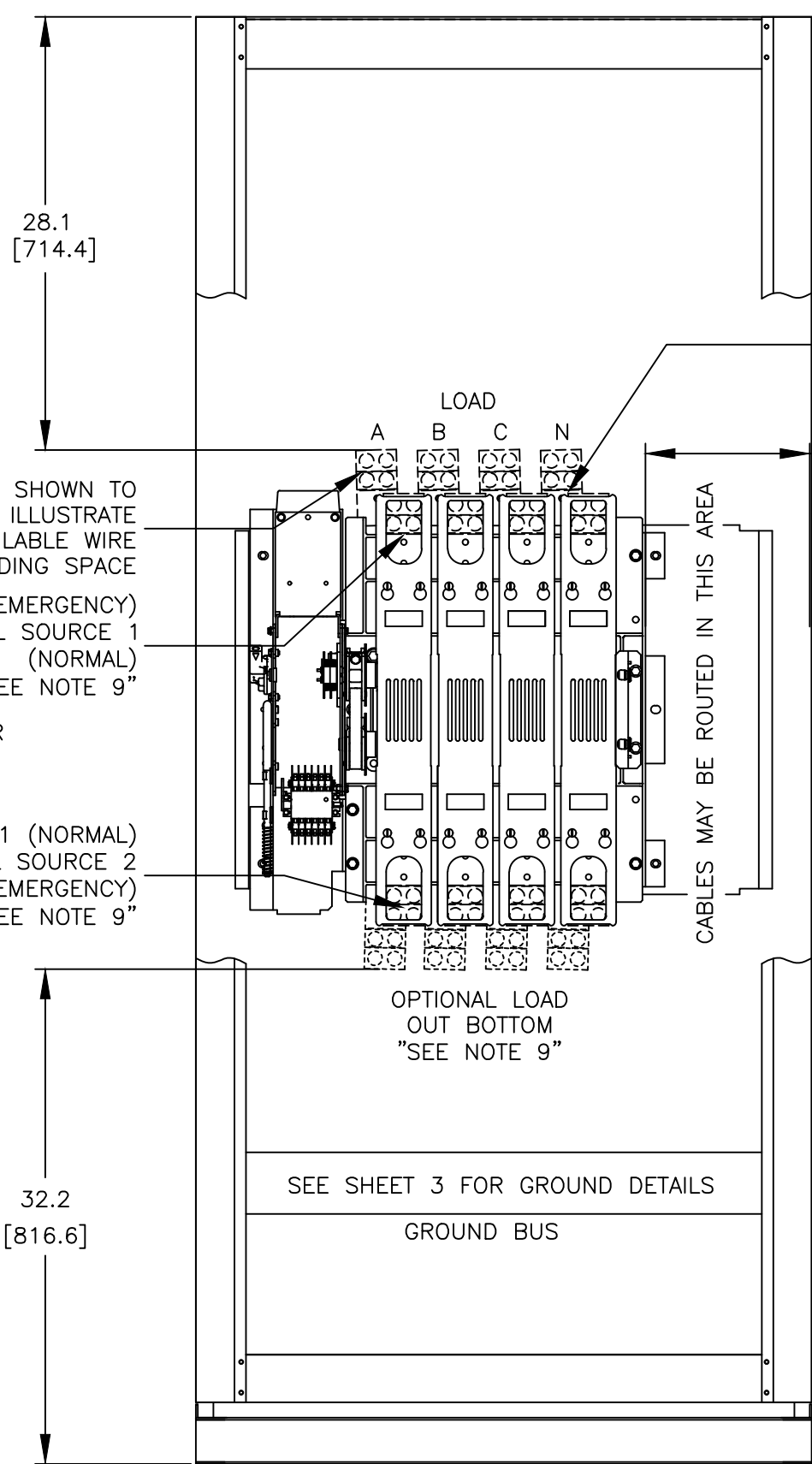
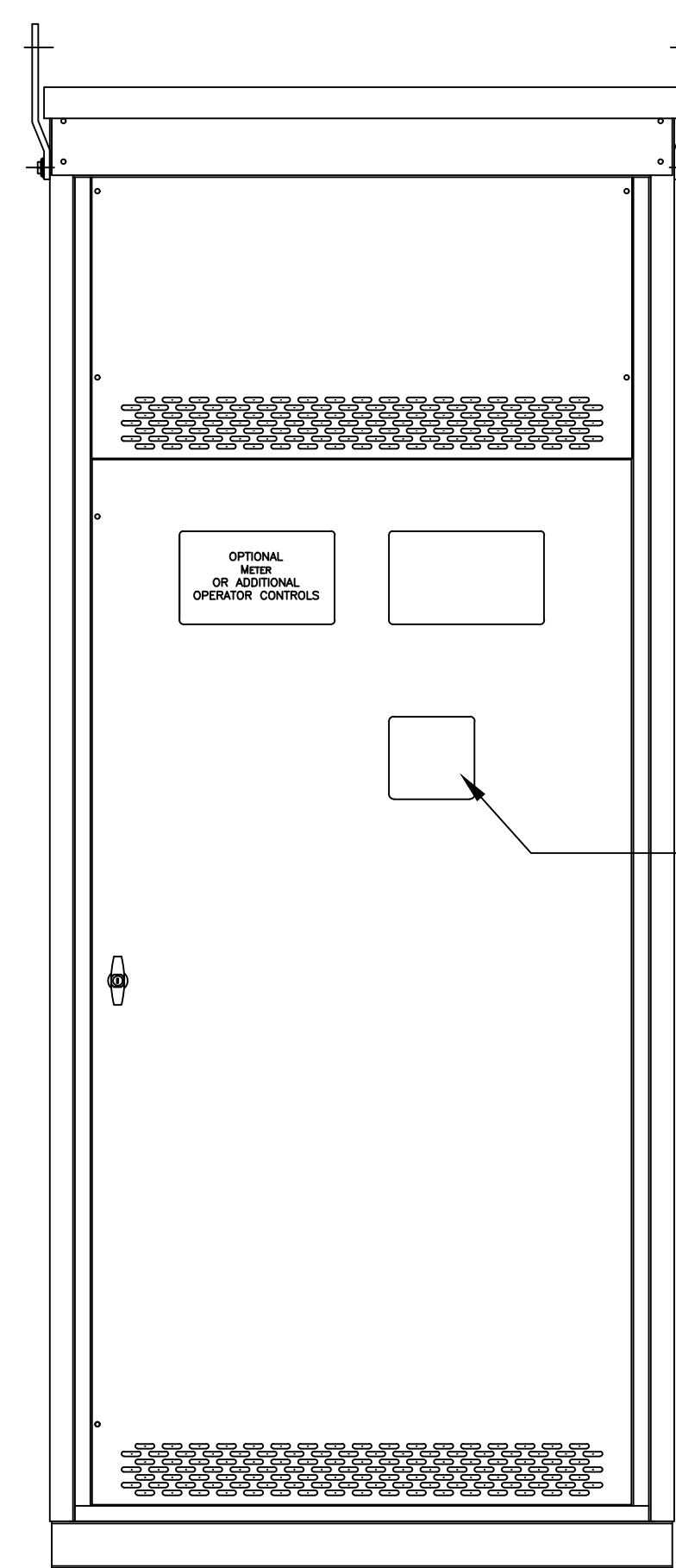
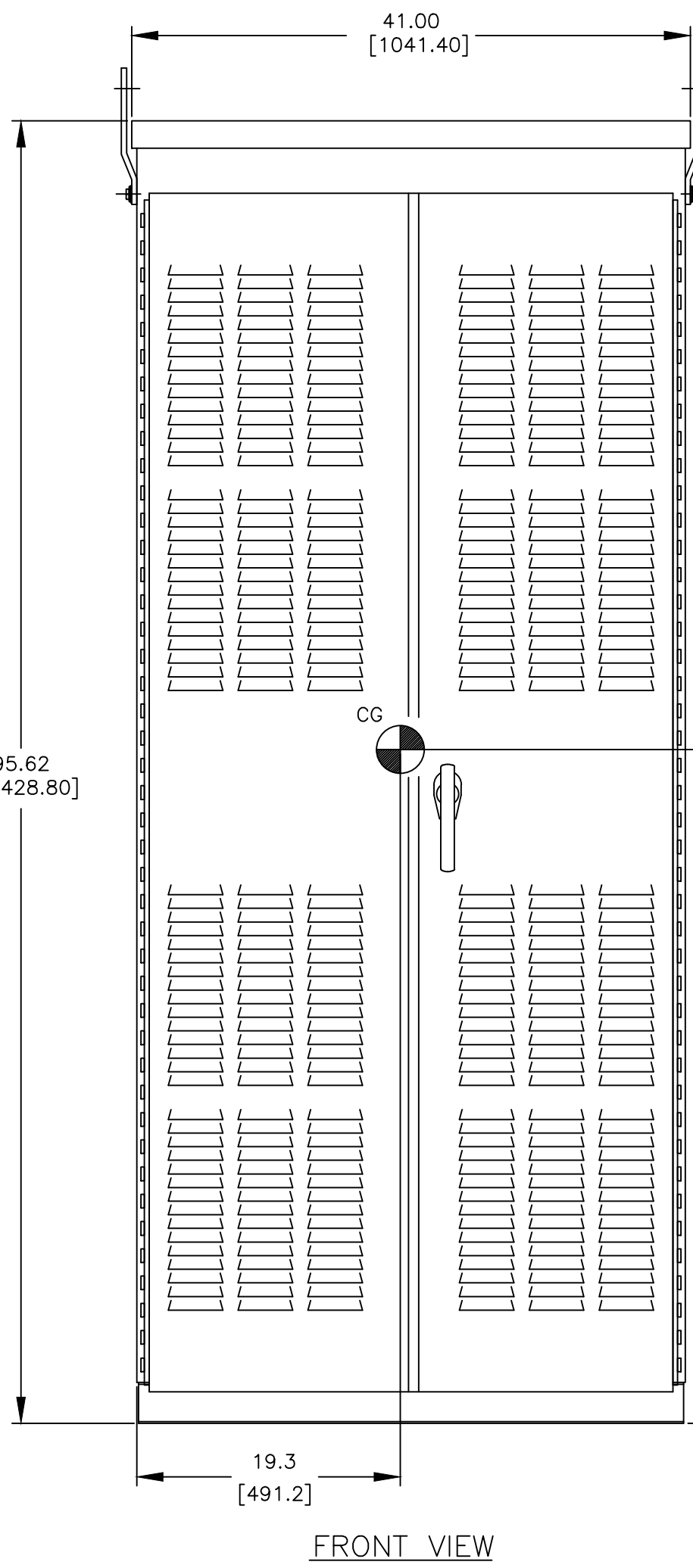
- H FRAME AUTOMATIC/NON-AUTOMATIC TRANSFER SWITCH.
- TRANSFER SWITCH RATING: 1200 AMPS.
WITHSTAND AND CLOSING RATING WHEN PROTECTED BY A CIRCUIT BREAKER WITHOUT AN ADJUSTABLE SHORT TIME RESPONSE,
MAXIMUM 0.05 SECONDS: 50,000 RMS SYM @ 240V, 480V, 600V.
WITHSTAND AND CLOSING RATING WHEN PROTECTED BY A CIRCUIT BREAKER WITH AN ADJUSTABLE SHORT TIME RESPONSE,
MAXIMUM 0.30 SECONDS: 36,000 RMS SYM @ 240V, 480V, 600V.
- A FULL RATED NEUTRAL CONNECTION FOR EACH SOURCE AND THE LOAD IS OPTIONAL. WHEN PROVIDED IT IS IN ONE OF THE FOLLOWING FORMATS.
 - SOLID NEUTRAL (SEE DETAIL B FOR TERMINATION)
 - SWITCHED NEUTRAL POLE (SEE DETAIL A FOR TERMINATION)
 - OVERLAPPING NEUTRAL POLE (NOT AVAILABLE ON ADTS, ACTS, NDTs & NCTS UNITS) (SEE DETAIL A FOR TERMINATION)
- UL 1008 OR CSA C22.2 No. 178.1

TERMINATIONS 1200A

- SWITCH CAN BE SUPPLIED WITHOUT LUGS (SEE SHEET 2).
 - SOURCES, LOAD AND GROUND LUG KITS ARE ORDERED SEPARATELY.
- MECHANICAL (SCREW TYPE) LUGS FOR COPPER (CU) OR ALUMINUM (AL) CABLE WHEN ORDERED WITH SWITCH.
 - SOURCE 1 (NORMAL): (4) 1/0-600MCM [50-300mm²] PER PHASE & NEUTRAL
 - LOAD: (4) 1/0-600MCM [50-300mm²] PER PHASE & NEUTRAL
 - SOURCE 2 (EMERGENCY): (4) 1/0-600MCM [50-300mm²] PER PHASE & NEUTRAL
 - GROUND: (12) 1/0-600MCM [50-300mm²]
 - SUITABLE WIRE BENDING SPACE IS PROVIDED AS PER NEC.

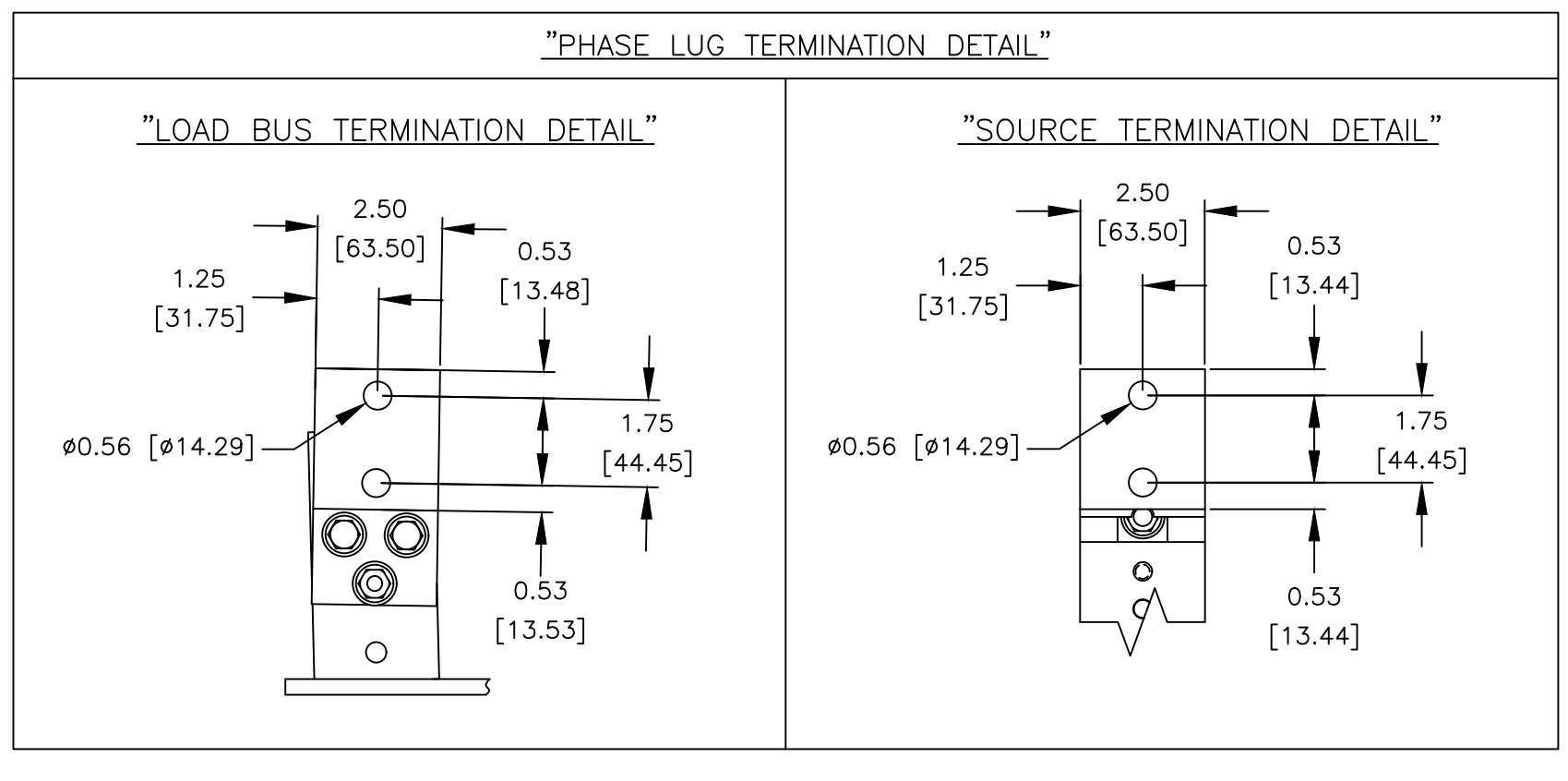
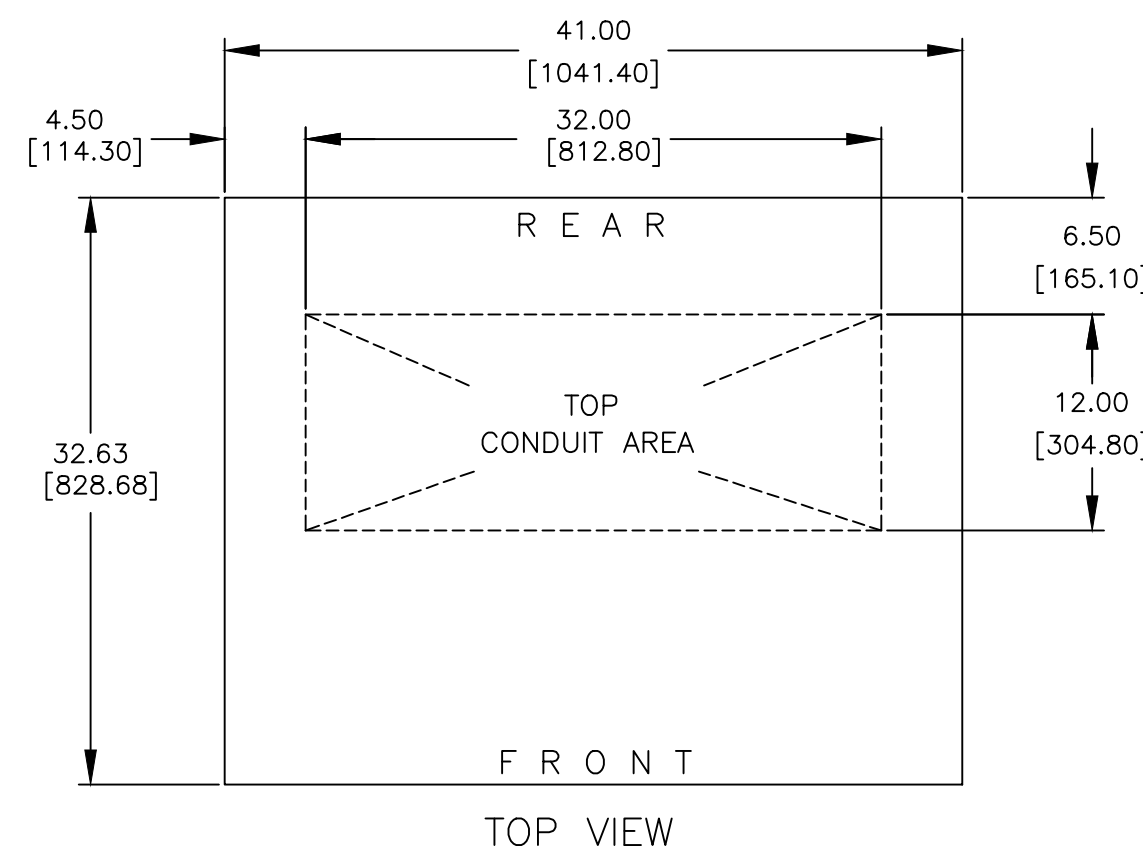
WIRING/CABLING

- USE 90°C MINIMUM CU/AL WIRE FOR POWER CABLES.
- WIRE SIZE TO BE BASED ON AMPACITY OF 75°C WIRE.
- USE 60°C MINIMUM CU WIRE FOR CONTROLS.



DIMENSION ARE IN INCHES [MILLIMETERS]

PROJECT NAME:		REV. TO SHEET	ECN NO.	BY	APP.	DATE
OUTLINE		MOUNTING				
HATS 1200A, PROVISION FOR MECHANICAL LUG						
TYPE 3R/3RX 96 X 41 X 33						
DRAWN BY	SV	DATE	03-17-23	MANUFACTURING TOLERANCES TO BE IN ACCORDANCE WITH ASCO PROCEDURE MP-1-003. FOR PLASTIC PARTS SEE MP-1-055	ASSEM. REF. NO.	COMPUTER GENERATED DRAWING
CHECKED	RN	DATE	03-17-23	PROPERTY OF ASCO POWER TECHNOLOGIES. USE PERMITTED FOR OUR WORK ONLY. ALL RIGHTS OF DESIGN OR INVENTION ARE RESERVED.		SCALE 1/32" = 1" SIZE DS
PROJECT APPROVAL						DWG. NO. 713201-025
FINAL APPROVAL	RN	DATE	09-04-23	ASCO	ASCO POWER TECHNOLOGIES, L.P.	DRAWING F 308222
	JPB	DATE	09-04-23	FLORHAM PARK, NEW JERSEY 07932 U.S.A.		SHEET 1 OF 3



GENERAL NOTES

- FLOOR MOUNTED ENCLOSURE.
TYPE 3R (M) CONSTRUCTED FROM CODE GAUGE STEEL.
FINISH TYPE: ANSI 61 GRAY POLYESTER SEMI GLOSS ELECTROSTATIC POWDER.
TYPE 3RX (R) EXTERIOR CONSTRUCTED FROM CODE GAUGE TYPE 304 STAINLESS STEEL.
TYPE 3RX (S) EXTERIOR CONSTRUCTED FROM CODE GAUGE TYPE 316 STAINLESS STEEL.
- EXTERIOR DOOR HAVE PADLOCKABLE HANDLES WITH 3-POINT LATCH
- DESIGNED FOR FRONT ACCESS.
- RECOMMENDED CLEARANCES: FRONT: 36 [914.40] REAR: NONE.
- EXTERIOR VENTS ARE SUPPLIED WITH POLYESTER DUST FILTERS.
- LIFTING PLATES: SECTIONS ARE SUPPLIED WITH LIFTING PLATES. INSPECT PLATES FOR DAMAGE AND TORQUE BOLTS TO 45 FT LBS [61 N m] BEFORE USE. REFER TO ANSI/NEMA PB 2.1 FOR PROPER HANDLING OF EQUIPMENT. AFTER INSTALLATION OF SECTION, REMOVE LIFTING PLATES. REINSTALL BOLTS INTO EXTERIOR HOLES AND TORQUE TO APPROXIMATELY 20 FT LBS [27 N m].
- CENTER OF GRAVITY
- APPROXIMATE SHIPPING WEIGHT: 1290 LB [585 KG].
- ACCESSORY 40, OPTIONAL LOAD AND SOURCE LOCATIONS IS AVAILABLE ON SERIES 7000 ONLY.

TRANSFER SWITCH

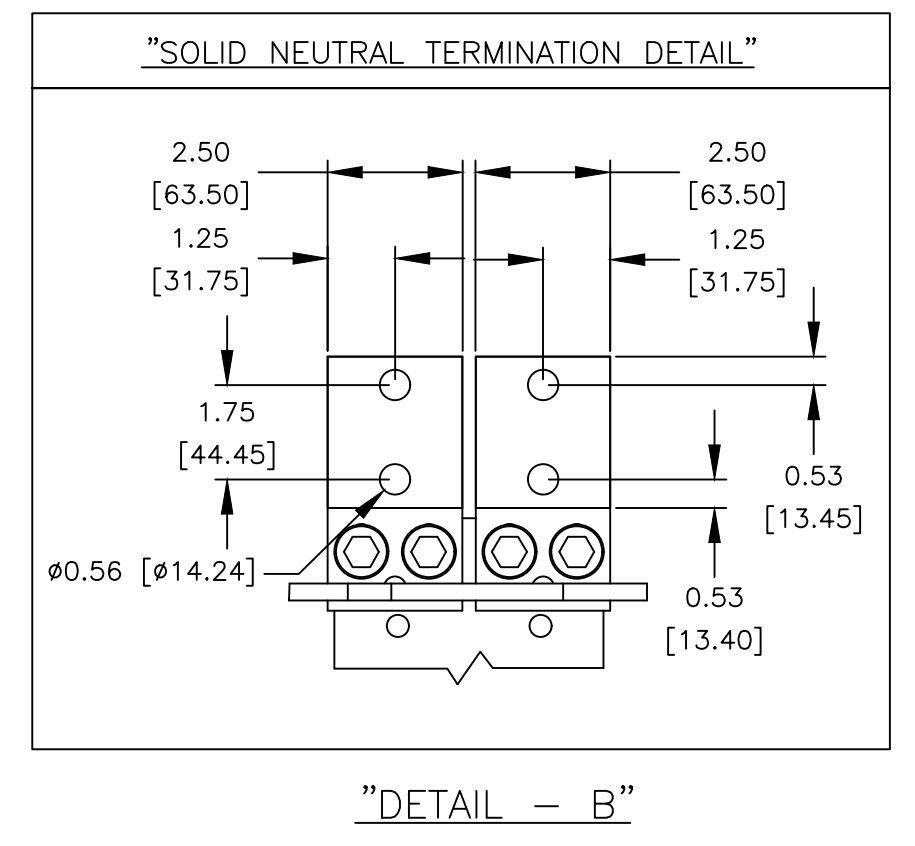
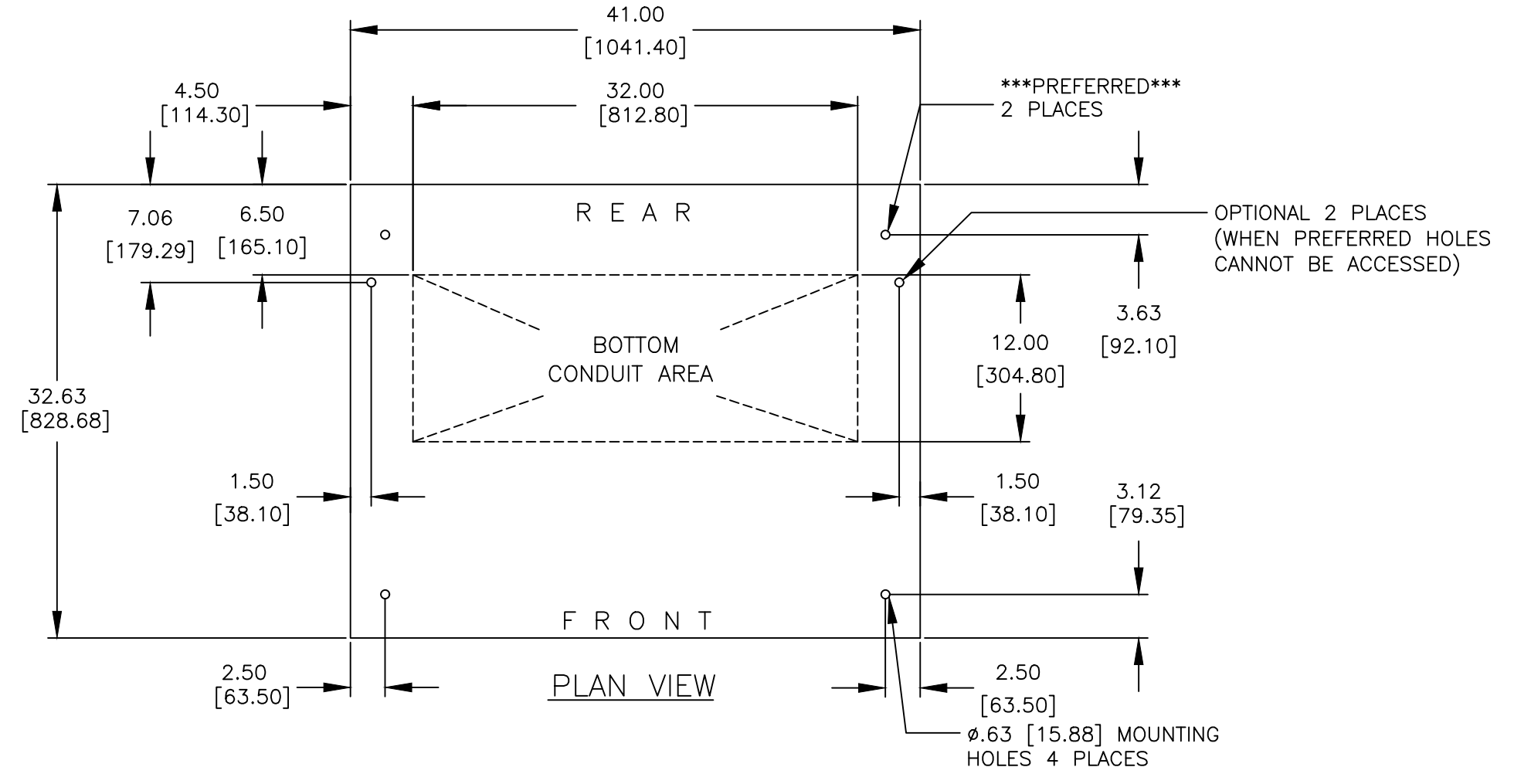
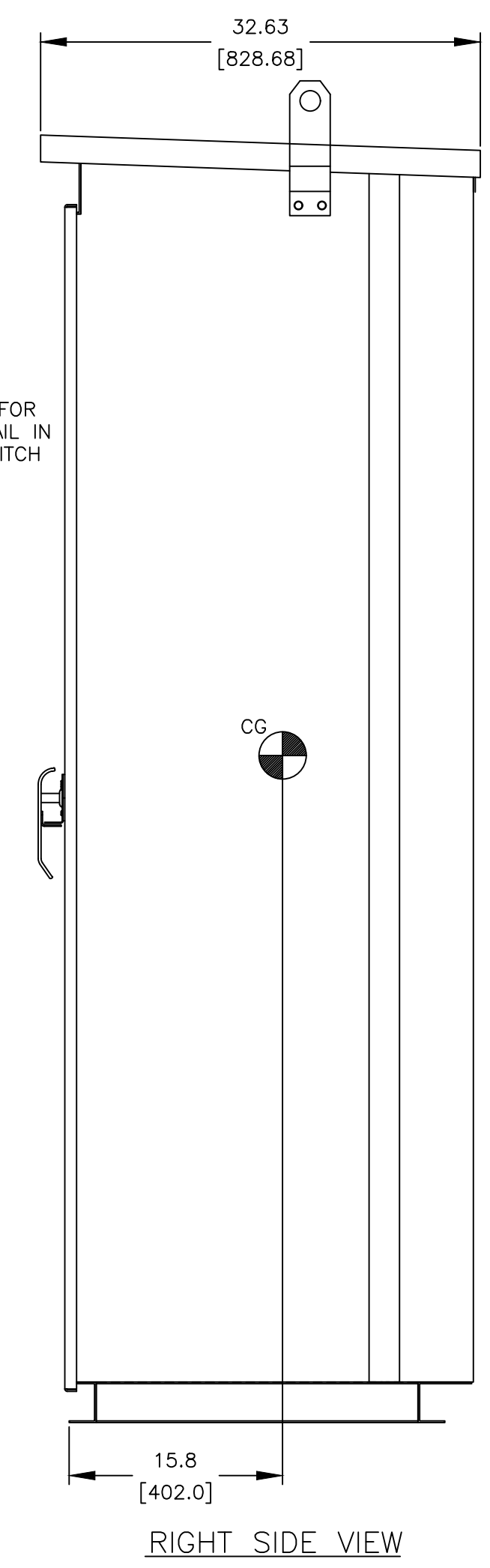
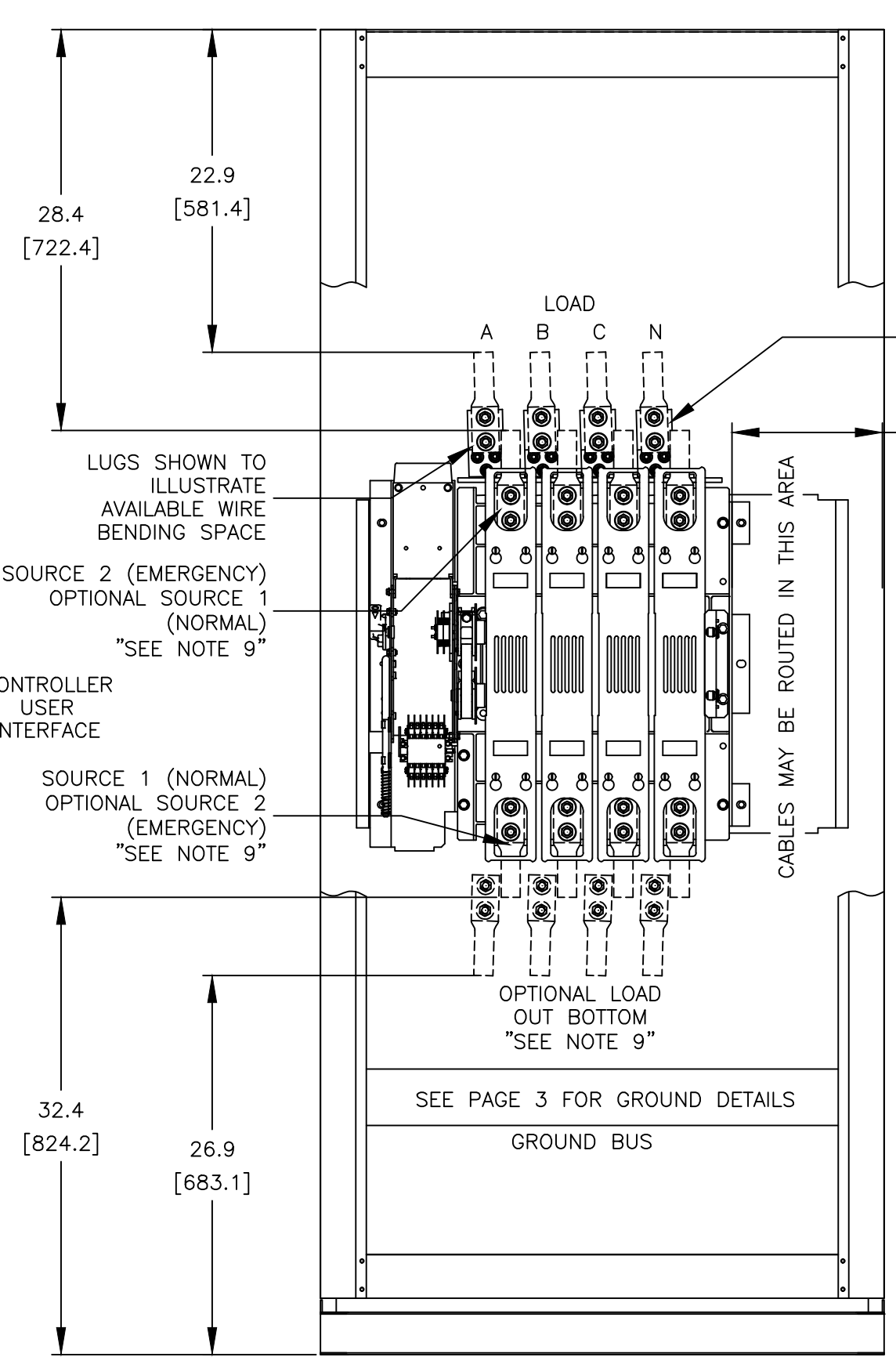
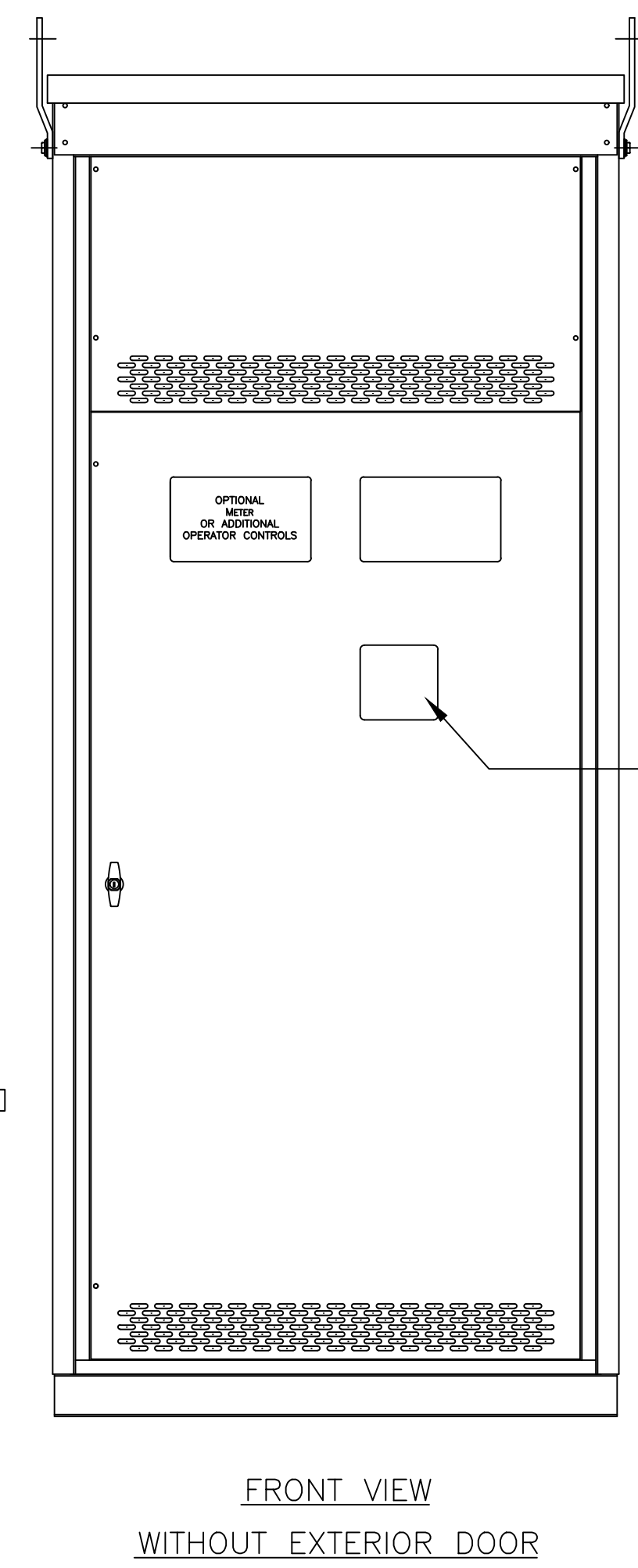
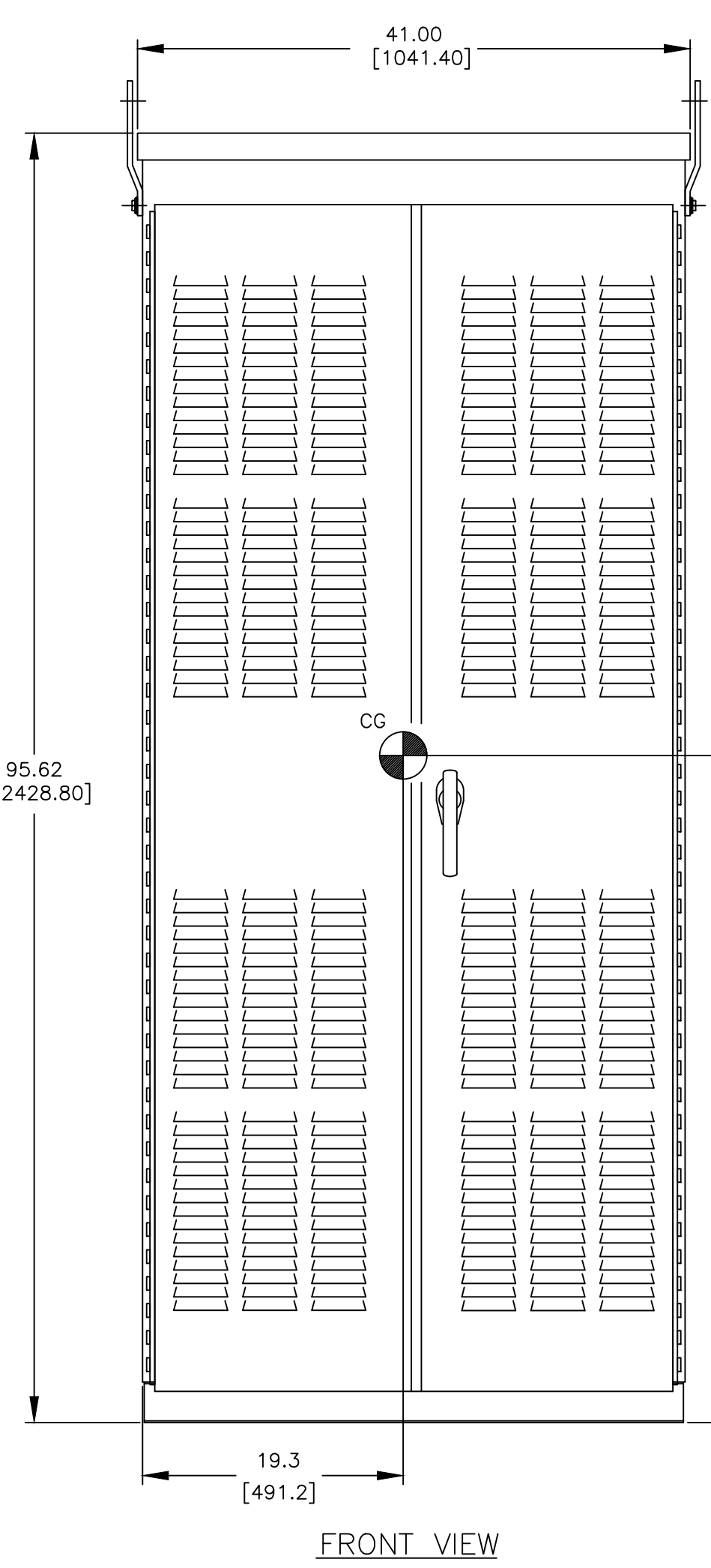
- H FRAME 7000 SERIES AUTOMATIC/NON-AUTOMATIC TRANSFER SWITCH ONLY.
- TRANSFER SWITCH RATING: 1200 AMPS.
WITHSTAND AND CLOSING RATING WHEN PROTECTED BY A CIRCUIT BREAKER WITHOUT AN ADJUSTABLE SHORT TIME RESPONSE,
MAXIMUM 0.05 SECONDS: 50,000 RMS SYM @ 240V, 480V, 600V.
WITHSTAND AND CLOSING RATING WHEN PROTECTED BY A CIRCUIT BREAKER WITH AN ADJUSTABLE SHORT TIME RESPONSE,
MAXIMUM 0.30 SECONDS: 36,000 RMS SYM @ 240V, 480V, 600V.
- A FULL RATED NEUTRAL CONNECTION FOR EACH SOURCE AND THE LOAD IS OPTIONAL. WHEN PROVIDED IT IS IN ONE OF THE FOLLOWING FORMATS.
A. SOLID NEUTRAL (SEE DETAIL B FOR TERMINATION)
B. SWITCHED NEUTRAL POLE (SEE DETAIL A FOR TERMINATION)
C. OVERLAPPING NEUTRAL POLE (NOT AVAILABLE ON ADTS, ACTS, NDTs & NCTS UNITS) (SEE DETAIL A FOR TERMINATION)
- UL 1008 OR CSA C22.2 No. 178.1

TERMINATIONS 1200A

- SWITCH SUPPLIED WITHOUT LUGS.
A. SOURCES, LOAD AND GROUND LUG KITS ARE ORDERED SEPARATELY.
- COPPER CRIMP LUGS FOR COPPER CABLE.
SOURCE 1 (NORMAL): (4) 600MCM [300mm²] PER PHASE & NEUTRAL
LOAD: (4) 600MCM [300mm²] PER PHASE & NEUTRAL
SOURCE 2 (EMERGENCY): (4) 600MCM [300mm²] PER PHASE & NEUTRAL
A. SUITABLE WIRE BENDING SPACE IS PROVIDED AS PER NEC.
B. OPTIONAL LUGS MAY BE SUPPLIED (MAY AFFECT ENCLOSURE SIZE).

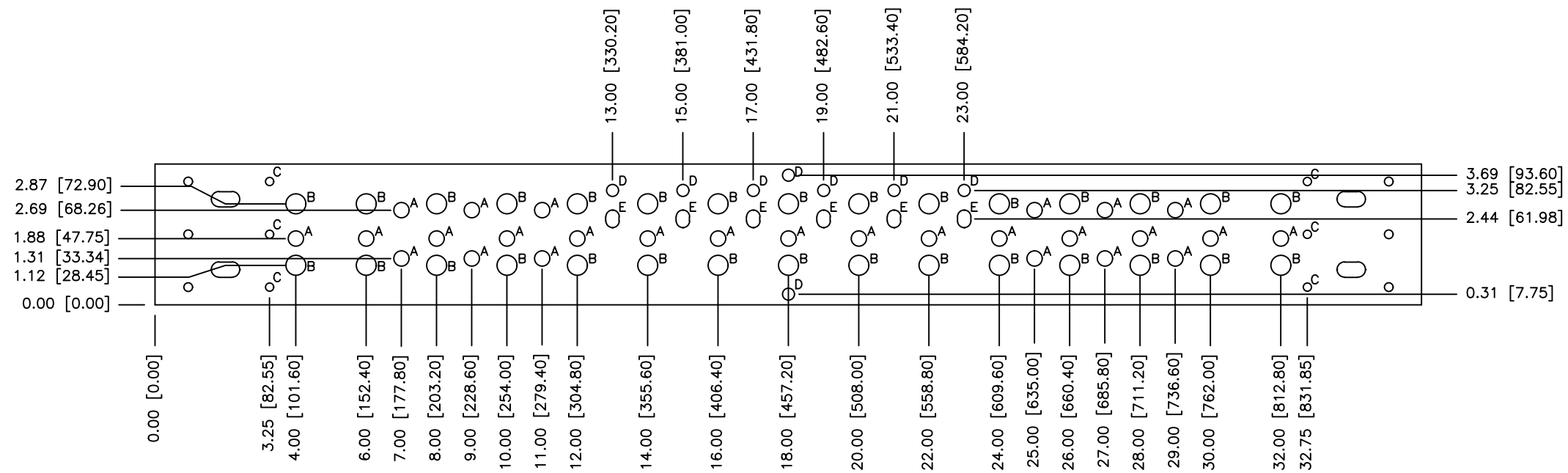
WIRING/CABLING

- USE 90°C MINIMUM CU/AL WIRE FOR POWER CABLES.
- WIRE SIZE TO BE BASED ON AMPACITY OF 75°C WIRE.
- USE 60°C MINIMUM CU WIRE FOR CONTROLS.



DIMENSION ARE IN INCHES [MILLIMETERS]

PROJECT NAME:		REV. TO SHEET		BY	APP.	DATE
OUTLINE		MOUNTING				
HATS 1200A, PROVISION FOR CRIMP LUG						
TYPE 3R/3RX 96 X 41 X 33, 7000 SERIES TRANSFER SWITCH ONLY						
BY	DATE	MANUFACTURING TOLERANCES TO BE IN ACCORDANCE WITH ASCO PROCEDURE MP-1-003. FOR PLASTIC PARTS SEE MP-1-055		ASSEM. REF. NO.	COMPUTER GENERATED DRAWING	
DRAWN BY	SV	03-17-23			SCALE	3/32" = 1" SIZE DS
CHECKED	RN	03-17-23	PROPERTY OF ASCO POWER TECHNOLOGIES. USE PERMITTED FOR OUR WORK ONLY. ALL RIGHTS OF DESIGN OR INVENTION ARE RESERVED.		DWG. NO.	713201-025
PROJECT APPROVAL					REV.	F
FINAL APPROVAL	RN	09-04-23	ASCO POWER TECHNOLOGIES, LP.		DRAWING NO.	308222
	JPB	09-04-23	FLORHAM PARK, NEW JERSEY 07932 U.S.A.		SHEET	2 OF 3



HOLE DATA	
E	0.375 [9.525] WIDE X 0.50 [12.70] SLOT
D	0.340 [8.636] DIA.
C	0.228 [5.791] DIA.
B	0.562 [14.275] DIA.
A	0.437 [11.099] DIA.

DIMENSION ARE IN INCHES [MILLIMETERS]

PROJECT NAME:		REV. TO SHEET		ECN NO.	BY	APP.	DATE
		F		308222	SV	JPB	03-22-24
		E		302562	SV		09-05-23
				SEE ECN			
HATS 1200A		COMPUTER GENERATED DRAWING		SCALE 1/4" = 1" SIZE BS			
GROUND TERMINATION DETAILS		DRAWN BY		DATE	ASSEM. REF. NO.		
		SV		03-17-23			
		CHECKED		DATE	MANUFACTURING TOLERANCES TO BE IN ACCORDANCE WITH ASCO PROCEDURE MP-1-003. FOR PLASTIC PARTS SEE MP-1-055		
		RN		03-17-23	PROPERTY OF ASCO POWER TECHNOLOGIES. USE PERMITTED FOR OUR WORK ONLY. ALL RIGHTS OF DESIGN OR INVENTION ARE RESERVED.		
		PROJECT APPROVAL					
		FINAL APPROVAL		RN	09-04-23	ASCO® ASCO POWER TECHNOLOGIES, L.P. FLORHAM PARK, NEW JERSEY 07932 U.S.A.	
		JPB		09-04-23	DRAWING REV. F		
				NO.	308222	SHEET 3 OF 3	

