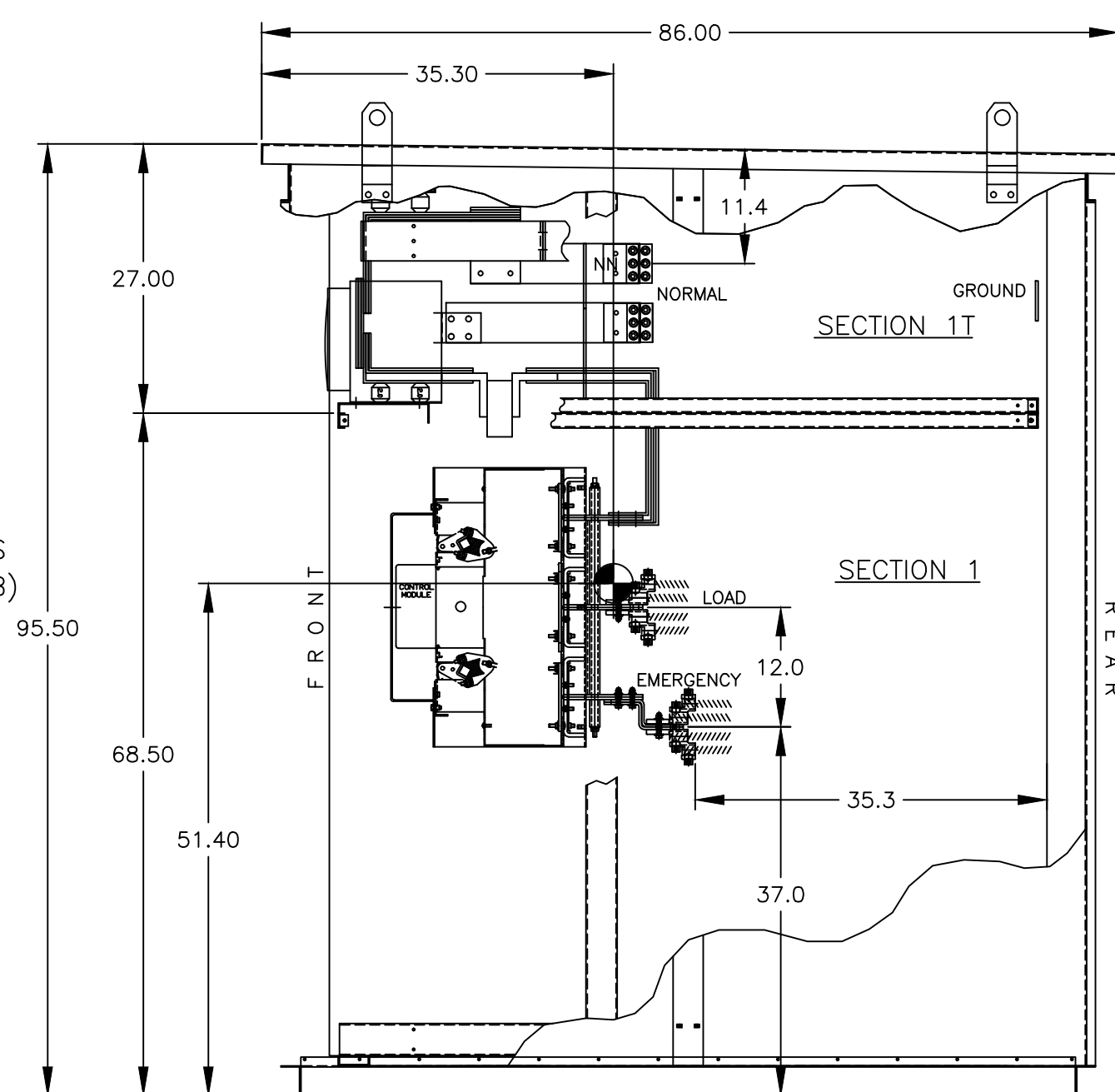
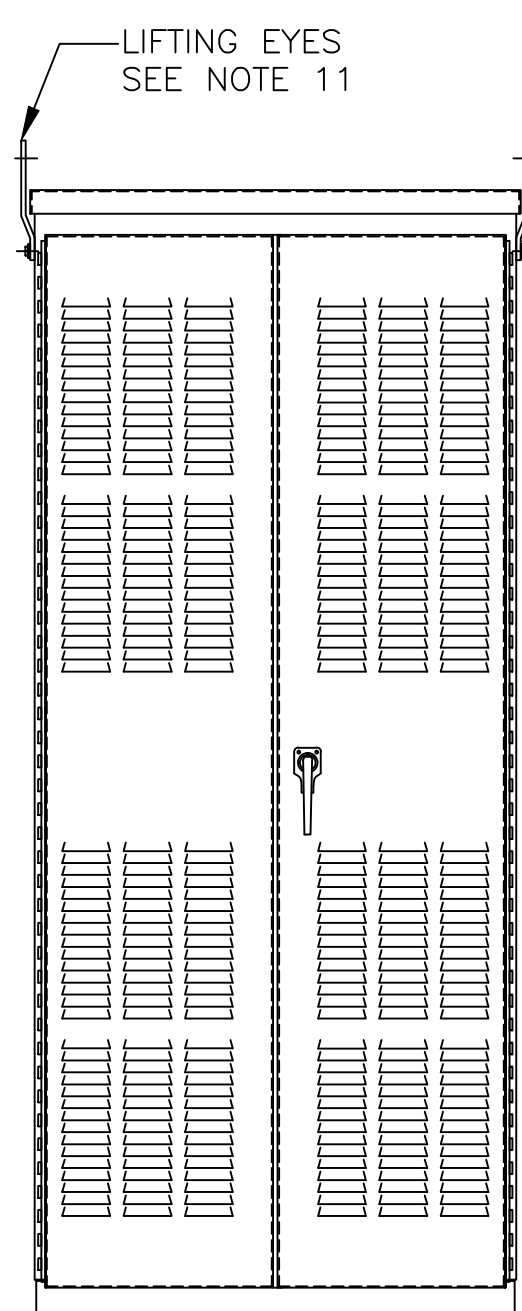


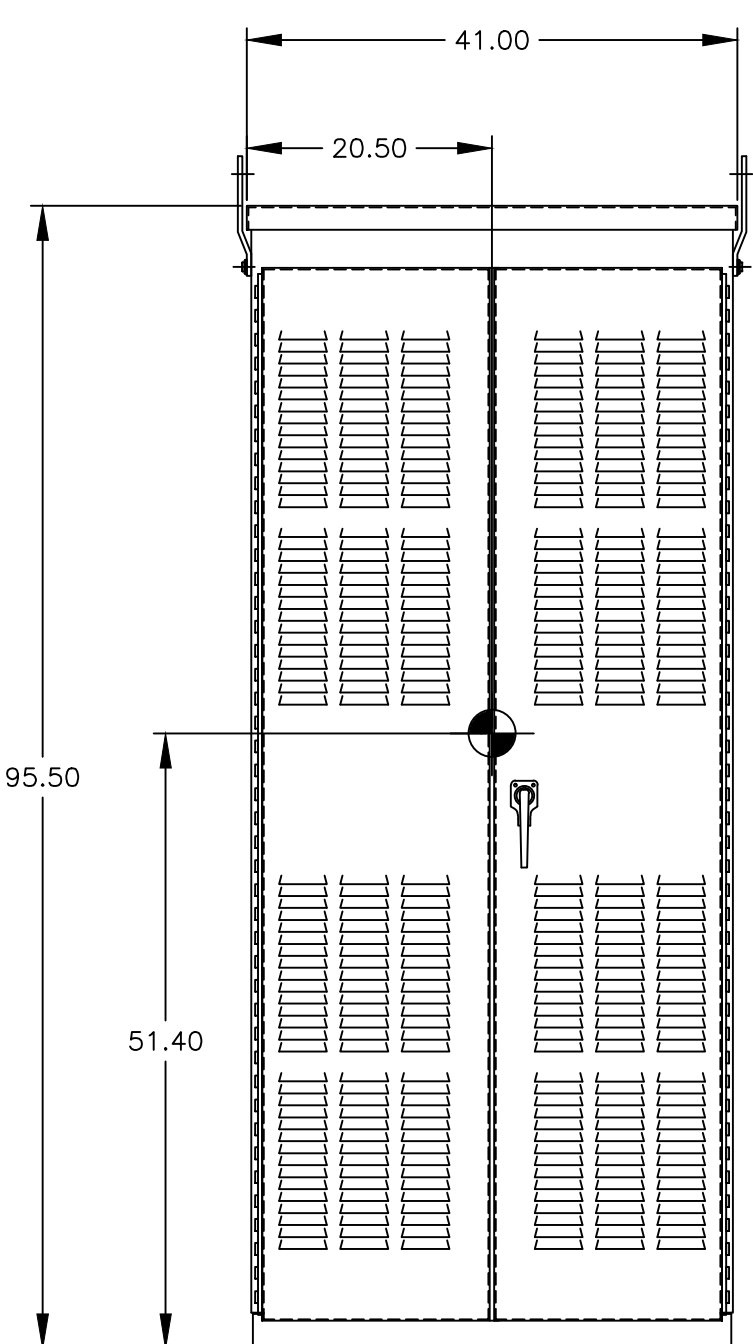
TOP VIEW



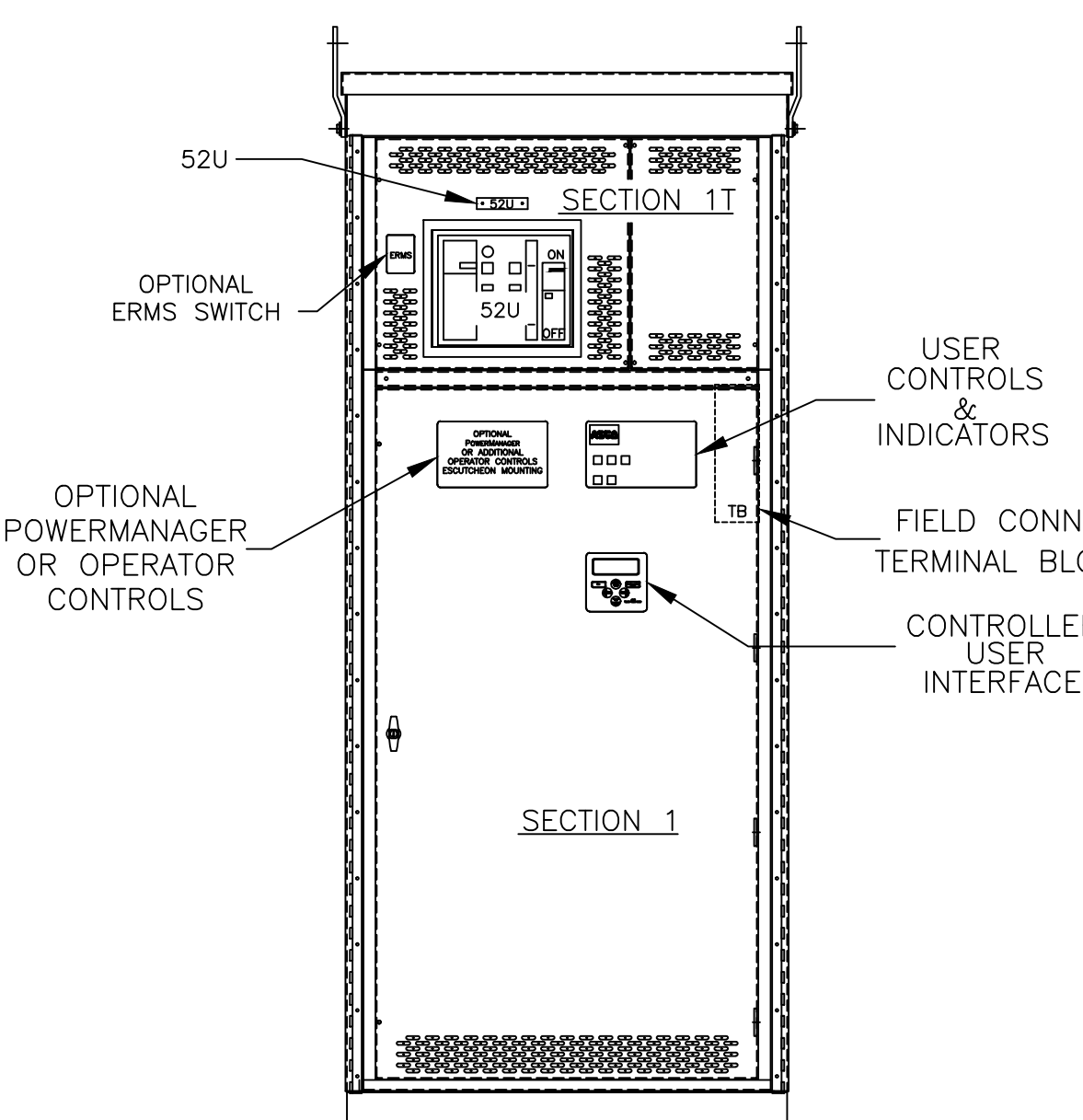
SIDE VIEW



REAR VIEW



FRONT VIEW



FRONT VIEW WITHOUT EXTERIOR DOORS

GENERAL NOTES

- FLOOR MOUNTED ENCLOSURE.  
TYPE 3R CONSTRUCTED FROM CODE GAUGE STEEL.  
FINISH: TYPE 3R, ANSI 61 GRAY POLYESTER SEMI GLOSS ELECTROSTATIC POWDER.  
TYPE 3RX EXTERIOR CONSTRUCTED FROM CODE GAUGE STAINLESS STEEL.  
(R) EXTERIOR CONSTRUCTED FROM TYPE 304 STAINLESS STEEL.  
(S) EXTERIOR CONSTRUCTED FROM TYPE 316 STAINLESS STEEL.
- EXTERIOR DOORS HAVE PADLOCKABLE HANDLES WITH 3-POINT LATCH
- DESIGNED FOR FRONT & REAR ACCESS.
- RECOMMENDED CLEARANCES: FRONT: 38" REAR: 36"
- EXTERIOR VENTS ARE SUPPLIED WITH POLYESTER DUST FILTERS.
- LIFTING PLATES: SECTIONS ARE SUPPLIED WITH LIFTING PLATES. INSPECT PLATES FOR DAMAGE AND TORQUE BOLTS TO 45 FT LBS BEFORE USE. REFER TO ANSI/NEMA PB 2.1 FOR PROPER HANDLING OF EQUIPMENT. AFTER INSTALLATION OF SECTION, REMOVE LIFTING PLATES. REINSTALL BOLTS INTO EXTERIOR HOLES AND TORQUE TO APPROXIMATELY 20 FT LBS.
- SECTION 1 AND SECTION 1T SHIP AS ONE UNIT.
- CENTER OF GRAVITY
- APPROXIMATE WEIGHT: 2267LB.

SYSTEM NOTES

- SYSTEM RATING: 2500 AMPS, 3000 AMPS, 3Ø, 4W.  
SHORT CIRCUIT RATING- 100,000 RMS SYM AMPERES @ 480V.  
THE EMERGENCY SOURCE MUST BE PROTECTED BY A REMOTE OVERCURRENT PROTECTION DEVICE AS LISTED ON THE MARKINGS ON THE TRANSFER SWITCH.
- ALL BUS IS SILVER-PLATED COPPER, BASED ON 800A PER SQ. IN. DENSITY.
- GROUND BUS: 20% RATED.
- NEUTRAL BUS: 100% RATED.
- APPLICABLE LABELS: U.L. 891- SUITABLE ONLY FOR USE AS SERVICE EQUIPMENT.

TRANSFER SWITCH

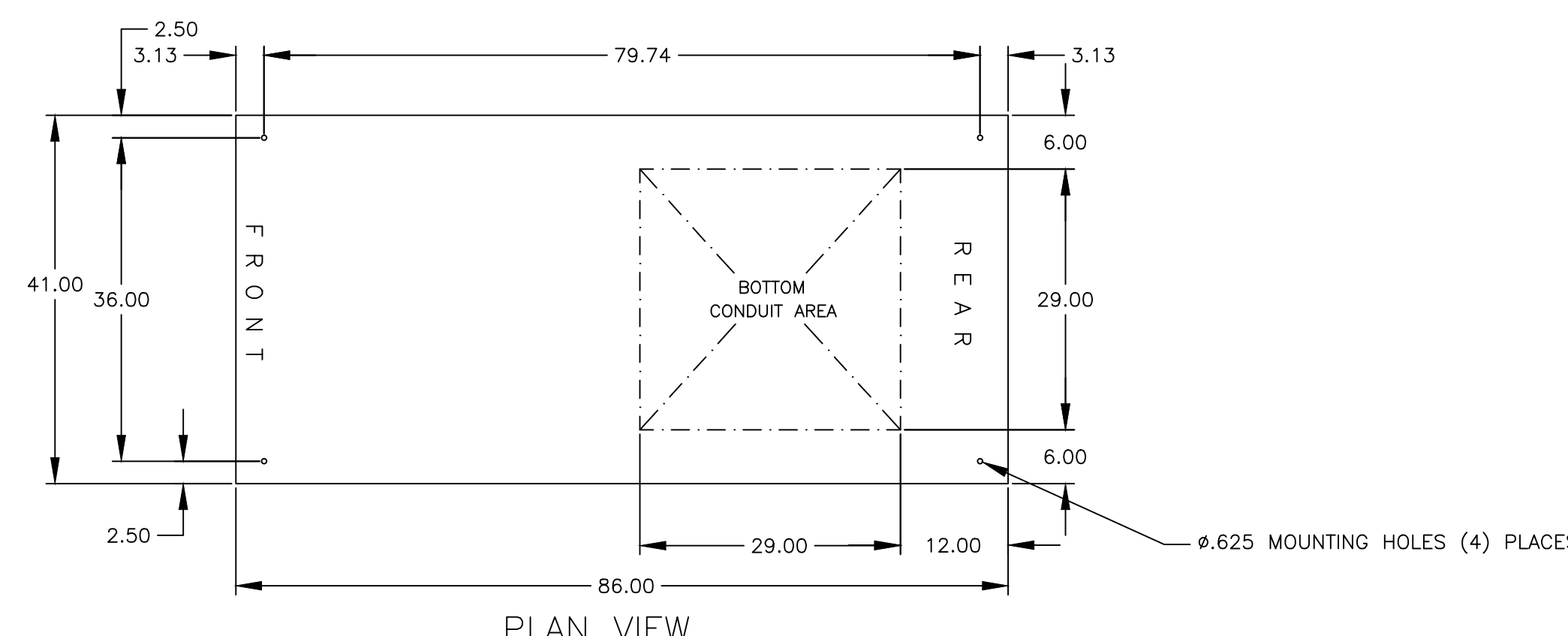
- G FRAME AUTOMATIC TRANSFER SWITCH 2500A - 3000A.
- TRANSFER SWITCH RATING: 2600 AMPS, 3000 AMPS,  
SHORT CIRCUIT RATING WHEN PROTECTED BY A CIRCUIT BREAKER  
TIME RESPONSE, MAXIMUM 0.05 SECONDS: 100,000 RMS SYM @ 480V
- A FULL RATED NEUTRAL CONNECTION FOR EACH SOURCE AND THE LOAD IS OPTIONAL.  
WHEN PROVIDED IT IS IN ONE OF THE FOLLOWING FORMATS.  
A. SOLID NEUTRAL  
B. SWITCHED NEUTRAL POLE  
C. OVERLAPPING NEUTRAL POLE
- UL 1008

TERMINATIONS 2500-3000 AMPS

- SUPPLIED WITH MECHANICAL (SCREW TYPE) LUGS FOR CU/AL CABLE.  
NORMAL: (12) 1/0 - 600MCM PER PHASE & NEUTRAL  
LOAD: (12) 1/0 - 600MCM PER PHASE & NEUTRAL  
EMERGENCY: (12) 1/0 - 600MCM PER PHASE & NEUTRAL  
GROUND: (36) 1/0 - 600MCM  
A. SUITABLE WIRE BENDING SPACE IS PROVIDED AS PER NEC.
- OPTIONAL LUGS MAY BE SUPPLIED.

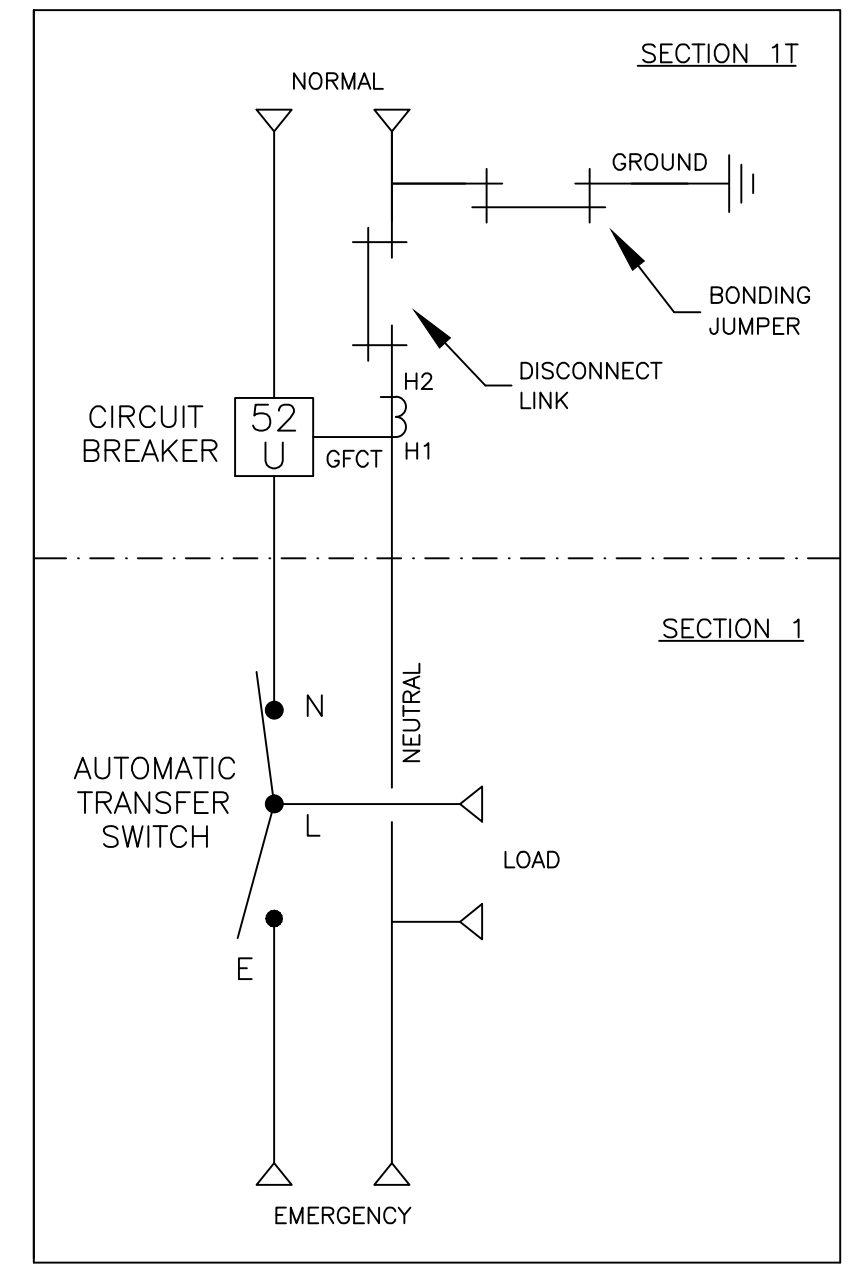
SERVICE ENTRANCE BREAKER: ITEM 52U

- SQUARE "D" 100% RATED, TYPE "NW", 3000AF/3000AT OR 2500AF/2500AT STATIONARY MOUNTED MANUALLY OPERATED, WITH LONG DELAY, SHORT DELAY, INSTANTANEOUS AND GROUND FAULT TRIP SETTINGS
- OPTIONAL ENERGY REDUCTION MAINTENANCE SETTING (ERMS) SYSTEM MAY BE SUPPLIED.
- U.L. 489

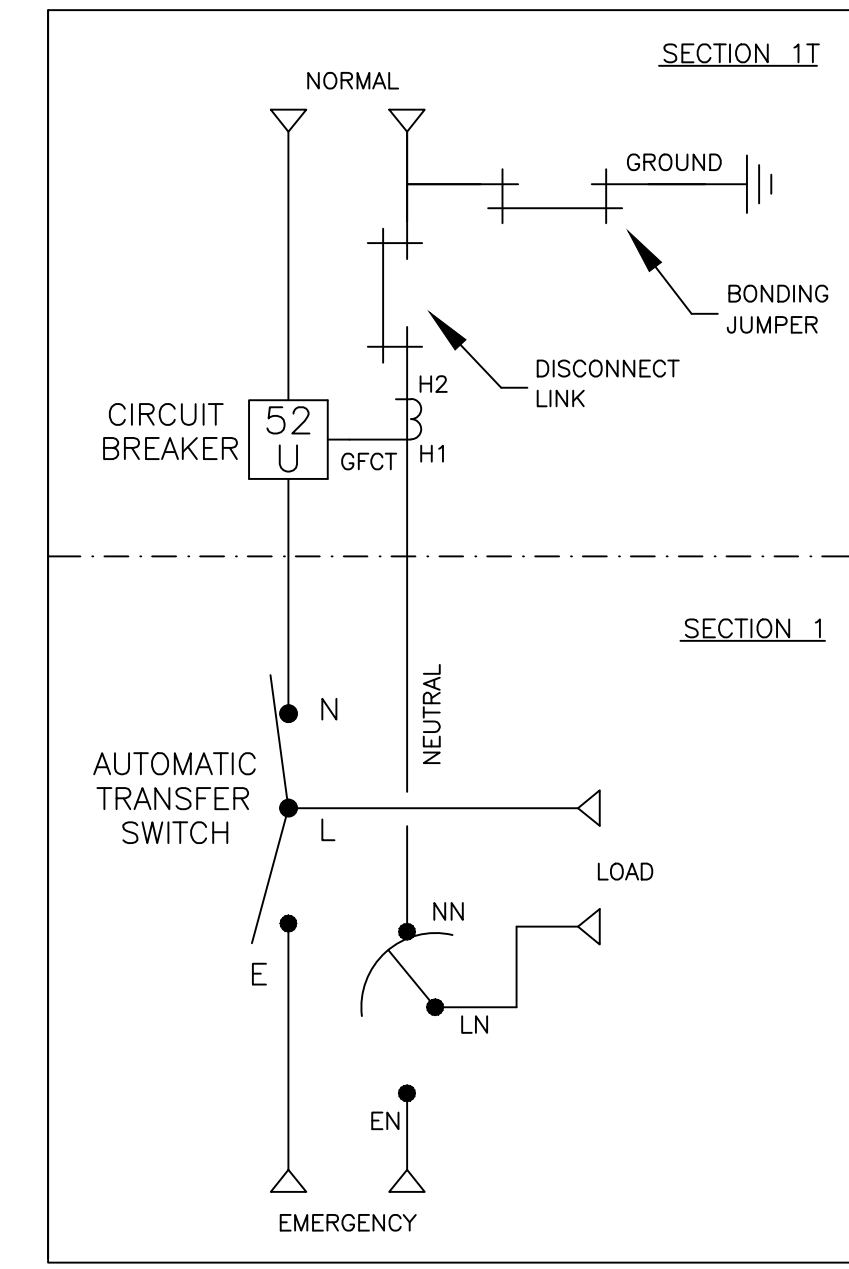


PLAN VIEW

ONE LINE DIAGRAMS



(WITH SOLID NEUTRAL)



(WITH SWITCHED/OVERLAPPING NEUTRAL)

|   |        |     |    |          |                    |
|---|--------|-----|----|----------|--------------------|
| F | 279158 | VAK | RN | 06-06-19 | SEE ECN            |
| E | 255505 | BC  | RN | 06/24/15 | SEE ECN            |
| D | 231836 | LK  | RN | 05/03/11 | SEE ECN            |
| C | 221423 | DP  | RN | 1/15/09  | ADDED "100% RATED" |
| B | 218103 | AE  | WK | 04/23/08 | SEE ECN            |
| A | 214574 | TR  | WK | 8/3/07   | SEE ECN            |

|  |      |   |   |                 |                            |                             |
|--|------|---|---|-----------------|----------------------------|-----------------------------|
| PROJECT NAME:  |      | REV. TO SHEET   | ECN NO.   | BY              | APP.                       | DATE                        |
| OUTLINE  |      | MOUNTING  |   |                 |                            |                             |
| GAUS 2500A - 3000A, NW SERVICE ENTRANCE BREAKER ON NORMAL. |      |   |   |                 |                            |                             |
| TYPE 3R/3RX 96 X 41 X 86                                   |      |   |   |                 |                            |                             |
| BY   | DATE | MANUFACTURING TOLERANCES TO BE IN ACCORDANCE WITH ASCO PROCEDURE MP-1-003. FOR PLASTIC PARTS SEE MP-1-005 |   | ASSEM. REF. NO. | COMPUTER GENERATED DRAWING |                             |
| DRAWN BY   | RN   | 8-21-07   |   |                 | SCALE 1/16" = 1" SIZE DS   |                             |
| CHECKED  |      |   | PROPERTY OF ASCO POWER TECHNOLOGIES. USE PERMITTED FOR OUR WORK ONLY. ALL RIGHTS OF DESIGN OR INVENTION ARE RESERVED. |                 | DWG. NO.                   |                             |
| PROJECT APPROVAL   |      |   |   |                 | 754577-053                 |                             |
| FINAL APPROVAL   |      |   | ASCO® ASCO POWER TECHNOLOGIES, L.P. FLOHAM PARK, NEW JERSEY 07932 U.S.A.  |                 | DRAWING F REV.             | ECN NO. 279158 SHEET 1 OF 1 |