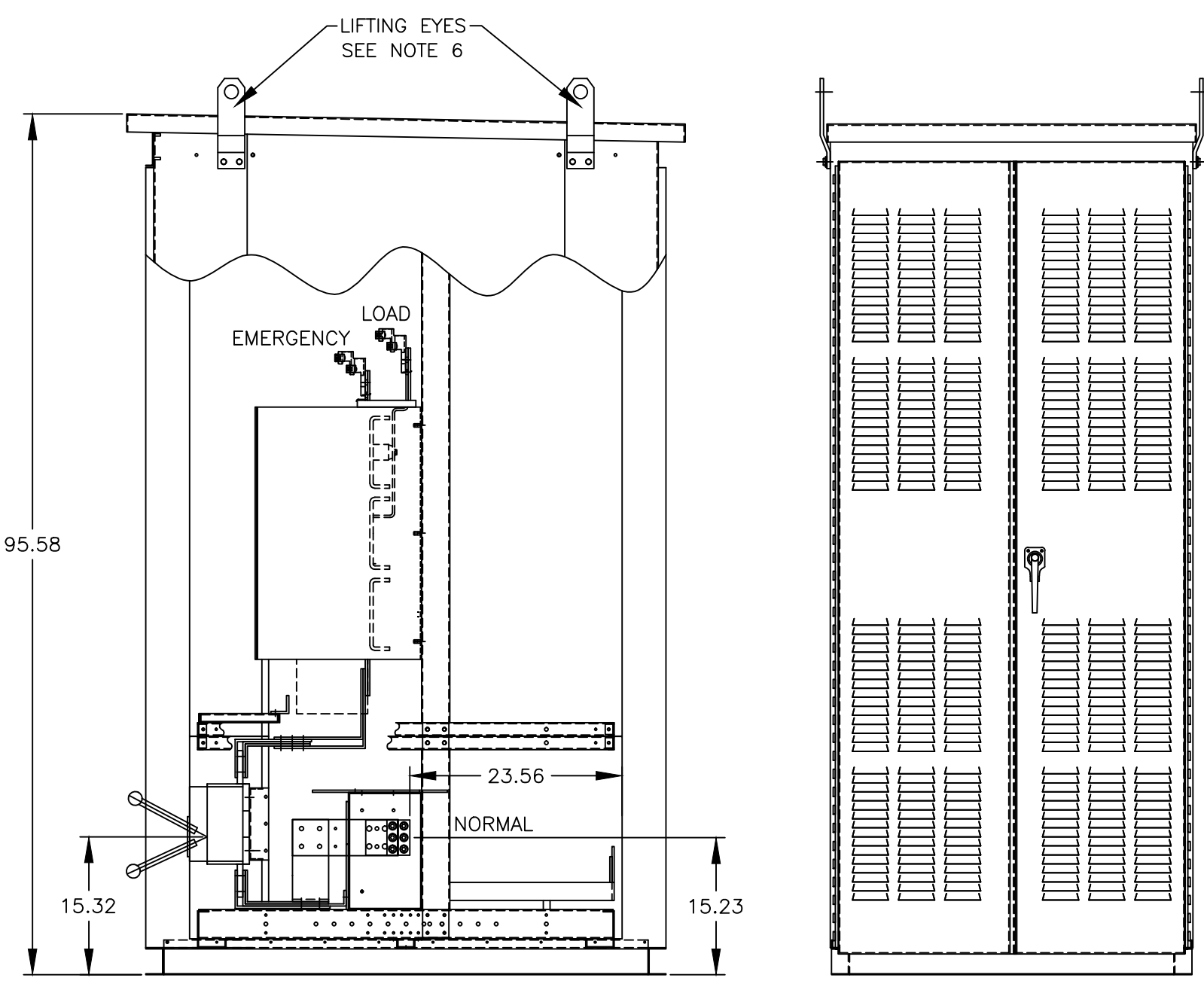
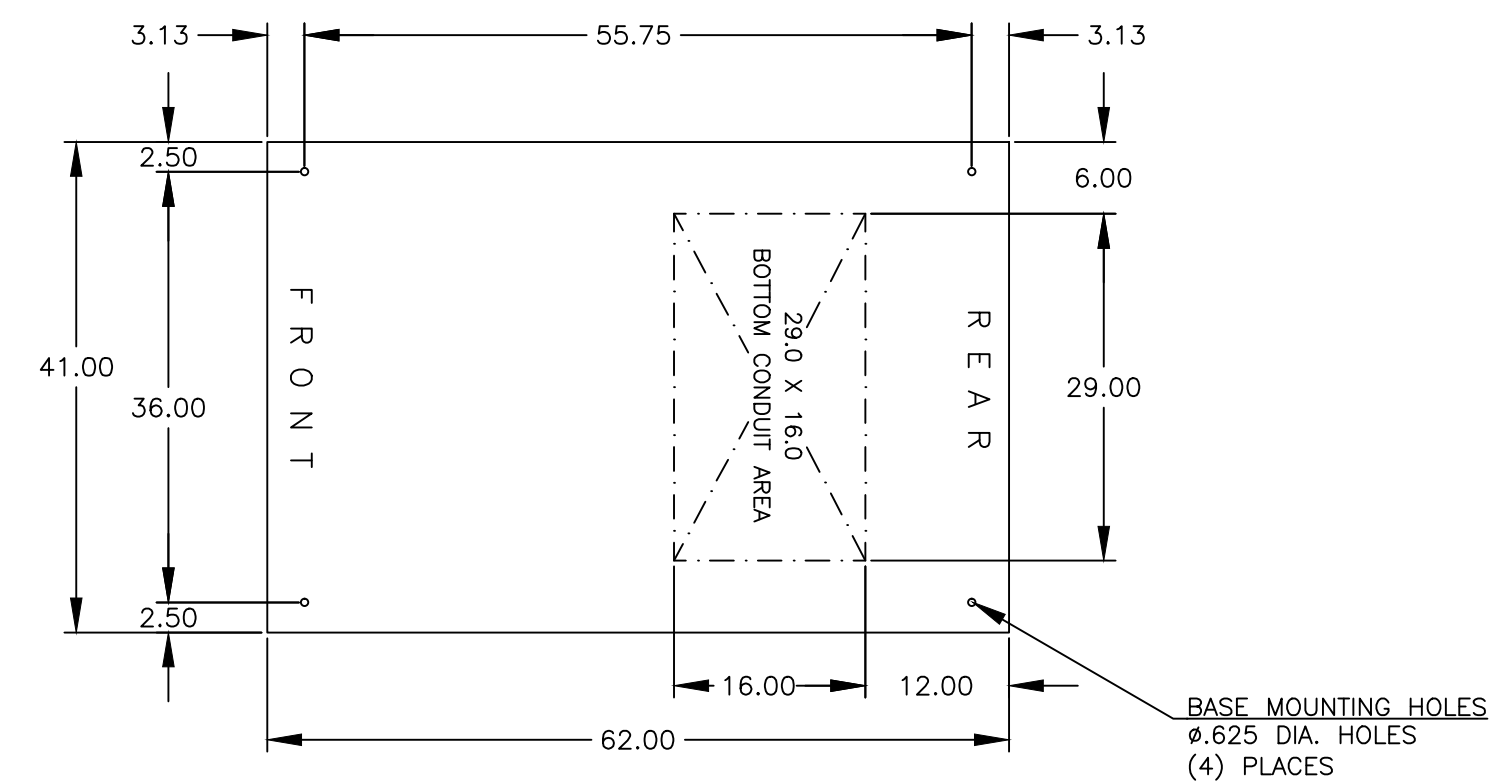


TOP VIEW



RIGHT SIDE VIEW

REAR VIEW



PLAN VIEW

GENERAL NOTES

- FLOOR MOUNTED ENCLOSURE.
TYPE 3R CONSTRUCTED FROM CODE GAUGE STEEL.
FINISH: TYPE 3R, ANSI 61 GRAY POLYESTER SEMI GLOSS ELECTROSTATIC POWDER.
TYPE 3RX EXTERIOR CONSTRUCTED FROM CODE GAUGE STAINLESS STEEL.
(R) EXTERIOR CONSTRUCTED FROM TYPE 304 STAINLESS STEEL.
(S) EXTERIOR CONSTRUCTED FROM TYPE 316 STAINLESS STEEL.
- EXTERIOR DOORS HAVE PADLOCKABLE HANDLES WITH 3-POINT LATCH
- DESIGNED FOR FRONT & REAR ACCESS.
- RECOMMENDED CLEARANCES: FRONT: 38" REAR: 36"
- EXTERIOR VENTS:
1000A - 1600A: NO VENTS.
2000A: VENTS ARE SUPPLIED WITH POLYESTER DUST FILTERS.
- LIFTING PLATES: SECTIONS ARE SUPPLIED WITH LIFTING PLATES. INSPECT PLATES FOR DAMAGE AND TORQUE BOLTS TO 45 FT LBS BEFORE USE. REFER TO ANSI/NEMA PB 2.1 FOR PROPER HANDLING OF EQUIPMENT. AFTER INSTALLATION OF SECTION, REMOVE LIFTING PLATES. REINSTALL BOLTS INTO EXTERIOR HOLES AND TORQUE TO APPROXIMATELY 20 FT LBS.

SYSTEM NOTES

- SYSTEM RATING: 1000 AMPS, 1200 AMPS, 1600 AMPS, 2000 AMPS, 3 ϕ , 4W OR 1 ϕ 3W.
SHORT CIRCUIT RATING: 65,000 RMS SYM AMPERES @ 480V.
THE EMERGENCY SOURCE INPUT MUST BE PROTECTED BY A REMOTE OVERCURRENT PROTECTION DEVICE AS LISTED ON THE MARKINGS ON THE TRANSFER SWITCH.
- ALL BUS IS SILVER-PLATED COPPER, BASED ON 1000A PER SQ. IN. DENSITY.
- GROUND: 20% RATED.
- NEUTRAL: 100% RATED.
- APPLICABLE LABEL(S): U.L. 891, SUITABLE ONLY FOR USE AS SERVICE EQUIPMENT.

TRANSFER SWITCH

- G FRAME AUTOMATIC TRANSFER SWITCH.
- TRANSFER SWITCH RATING: 1000 AMPS, 1200 AMPS, 1600 AMPS AND 2000 AMPS.
SHORT CIRCUIT RATING WHEN PROTECTED BY A CIRCUIT BREAKER
TIME RESPONSE, MAXIMUM 0.05 SECONDS: 65,000 RMS SYM @ 480V.
- A FULL RATED NEUTRAL CONNECTION FOR EACH SOURCE AND THE LOAD IS OPTIONAL.
WHEN PROVIDED IT IS IN ONE OF THE FOLLOWING FORMATS.
A. SOLID NEUTRAL
B. SWITCHED NEUTRAL POLE
C. OVERLAPPING NEUTRAL POLE
- UL 1008

TERMINATIONS 1000A - 1200A

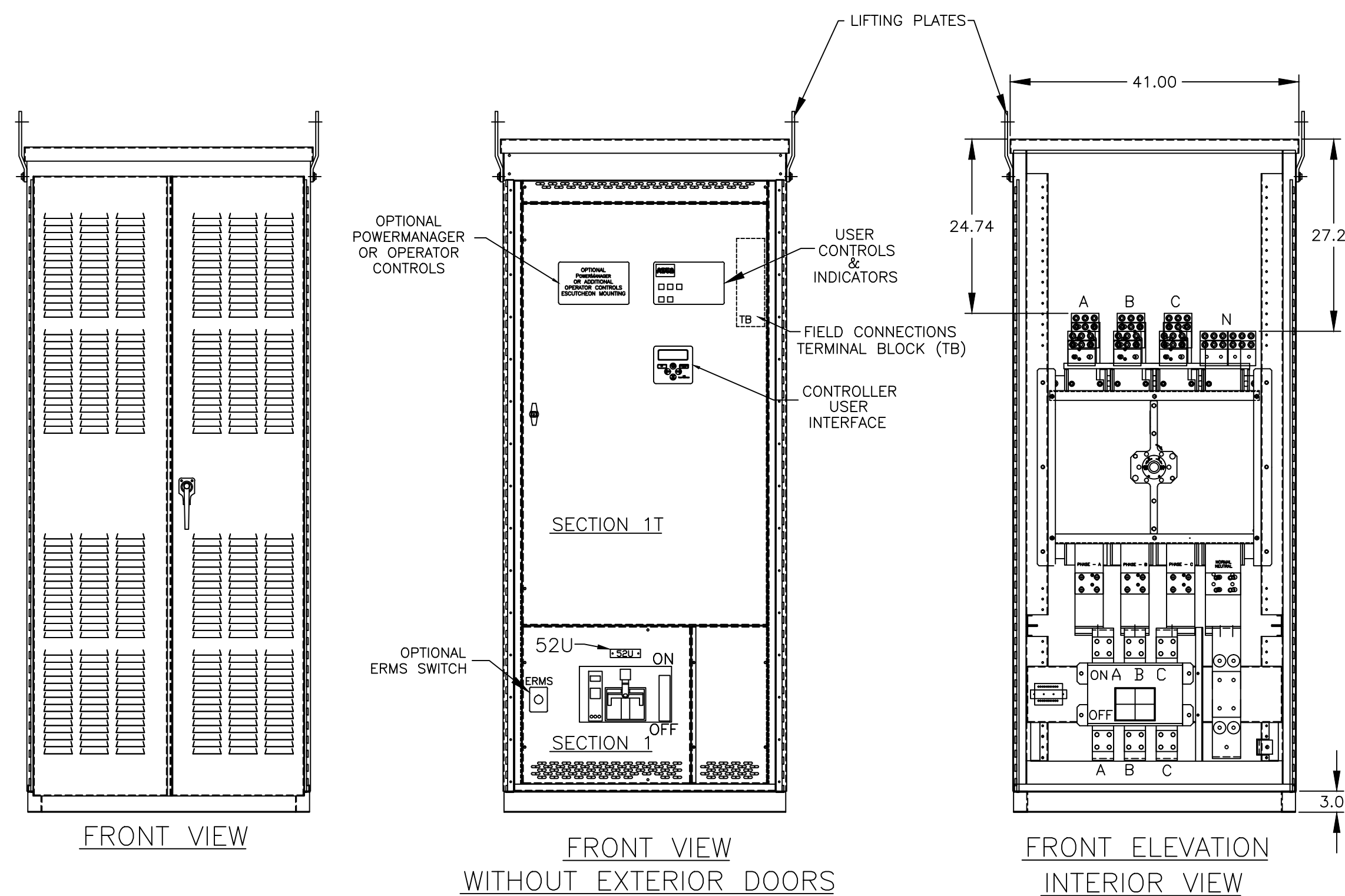
- SUPPLIED WITH MECHANICAL (SCREW TYPE) LUGS FOR CU/AL CABLE.
NORMAL: (4) 1/0 - 600MCM PER PHASE & NEUTRAL
LOAD: (4) 1/0 - 600MCM PER PHASE & NEUTRAL
EMERGENCY: (4) 1/0 - 600MCM PER PHASE & NEUTRAL
GROUND: (12) 1/0 - 600MCM
A. SUITABLE WIRE BENDING SPACE IS PROVIDED AS PER NEC.
- OPTIONAL LUGS MAY BE SUPPLIED.

TERMINATIONS 1600A - 2000A

- SUPPLIED WITH MECHANICAL (SCREW TYPE) LUGS FOR CU/AL CABLE.
NORMAL: (6) 1/0 - 600MCM PER PHASE & NEUTRAL
LOAD: (6) 1/0 - 600MCM PER PHASE & NEUTRAL
EMERGENCY: (6) 1/0 - 600MCM PER PHASE & NEUTRAL
GROUND: (18) 1/0 - 600MCM
A. SUITABLE WIRE BENDING SPACE IS PROVIDED AS PER NEC.
- OPTIONAL LUGS MAY BE SUPPLIED.

CIRCUIT BREAKER: ITEM 52U

- SQUARE "D" 80% RATED, TYPE "R" 3000AF/1000AT, 3000AF/1200AT, 3000AF/1600AT (P/N RJF36160U44A) OR 3000AF/2000AT (P/N RJF36200U44A) STATIONARY MOUNTED, MANUALLY OPERATED BREAKER WITH LONG DELAY, SHORT DELAY, INSTANTANEOUS AND GROUND FAULT TRIP SETTINGS.
SHORT CIRCUIT RATING: AIC 65,000 RMS SYS @ 480V.
- OPTIONAL 100% RATED BREAKER MAY BE SUPPLIED.
- OPTIONAL ENERGY REDUCTION MAINTENECSE SETTING MAY BE SUPPLIED
- U.L. 489

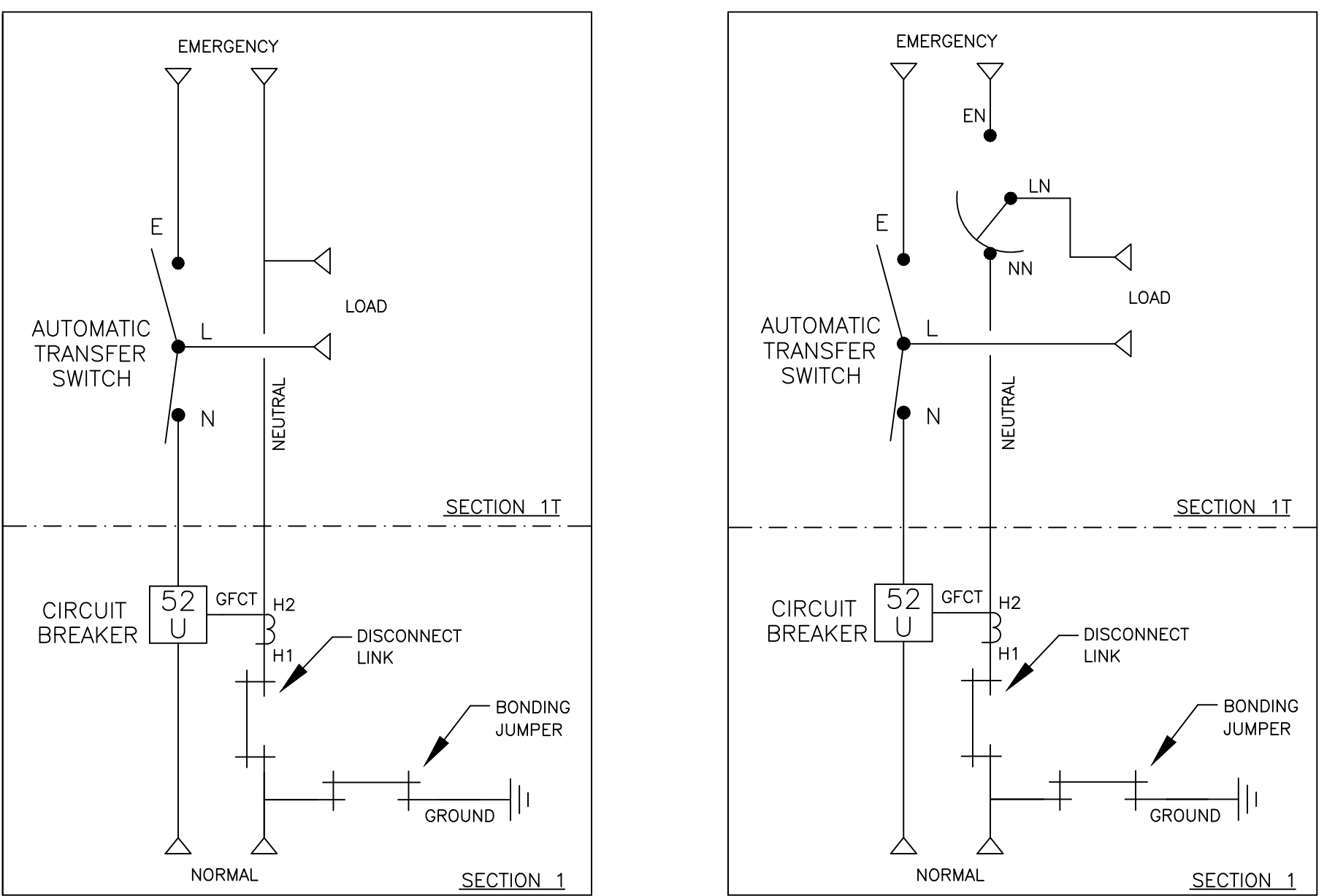


FRONT VIEW

FRONT VIEW WITHOUT EXTERIOR DOORS

FRONT ELEVATION INTERIOR VIEW

ONE LINE DIAGRAMS



(WITH SOLID NEUTRAL)

(WITH SWITCHED/OVERLAPPING NEUTRAL)

L	282074	BG	RN	02/18/20
SEE ECN				
K	261842	RG	RN	07/05/16
SEE ECN				
J	258022	BS	RN	11/13/15
SEE ECN				
H	255006	RN		5-27-15
SEE ECN				
G	252571	AE	RN	1/08/15
SEE ECN				
F	248105	VAK	RN	
SEE ECN				
E	240309	RBR	RN	12/18/12
NEW ISSUE				
D	231836	LK	RN	05/03/11
SEE ECN				
C	221423	DP	RN	1/15/09
ADDED "80% RATED"				
B	218103	AE	WK	04/23/08
SEE ECN				
A	213080	RN		4-25-07
SEE ECN				

PROJECT NAME:		REV. TO SHEET	ECN NO.	BY	APP.	DATE
OUTLINE		MOUNTING				
GAUS 1000A - 2000A, RJF SE BREAKER						
TYPE 3R/3RX 95.5 X 41 X 62 SECTION 1 & 1T						
DRAWN BY	SG	DATE	12/26/13	MANUFACTURING TOLERANCES TO BE IN ACCORDANCE WITH ASCO PROCEDURE MP-1-003. FOR PLASTIC PARTS SEE MP-1-005	ASSEM. REF. NO.	COMPUTER GENERATED DRAWING
CHECKED	RN			PROPERTY OF ASCO POWER TECHNOLOGIES. USE PERMITTED FOR OUR WORK ONLY. ALL RIGHTS OF DESIGN OR INVENTION ARE RESERVED.		SCALE: NONE SIZE DS
PROJECT APPROVAL						DWG. NO. 754577-050
FINAL APPROVAL						DRIVING L ECN NO. 282074 SHEET 1 OF 1

