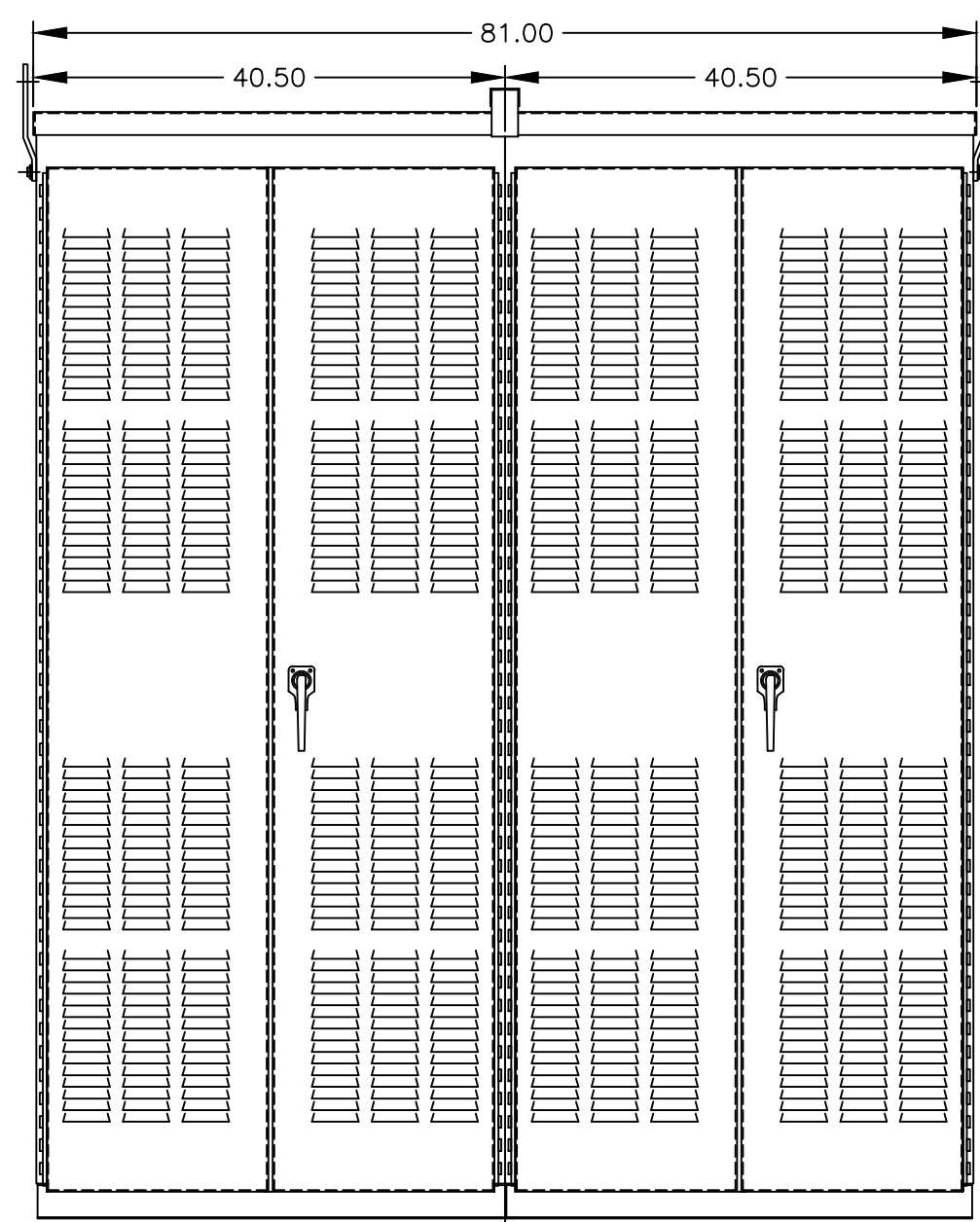
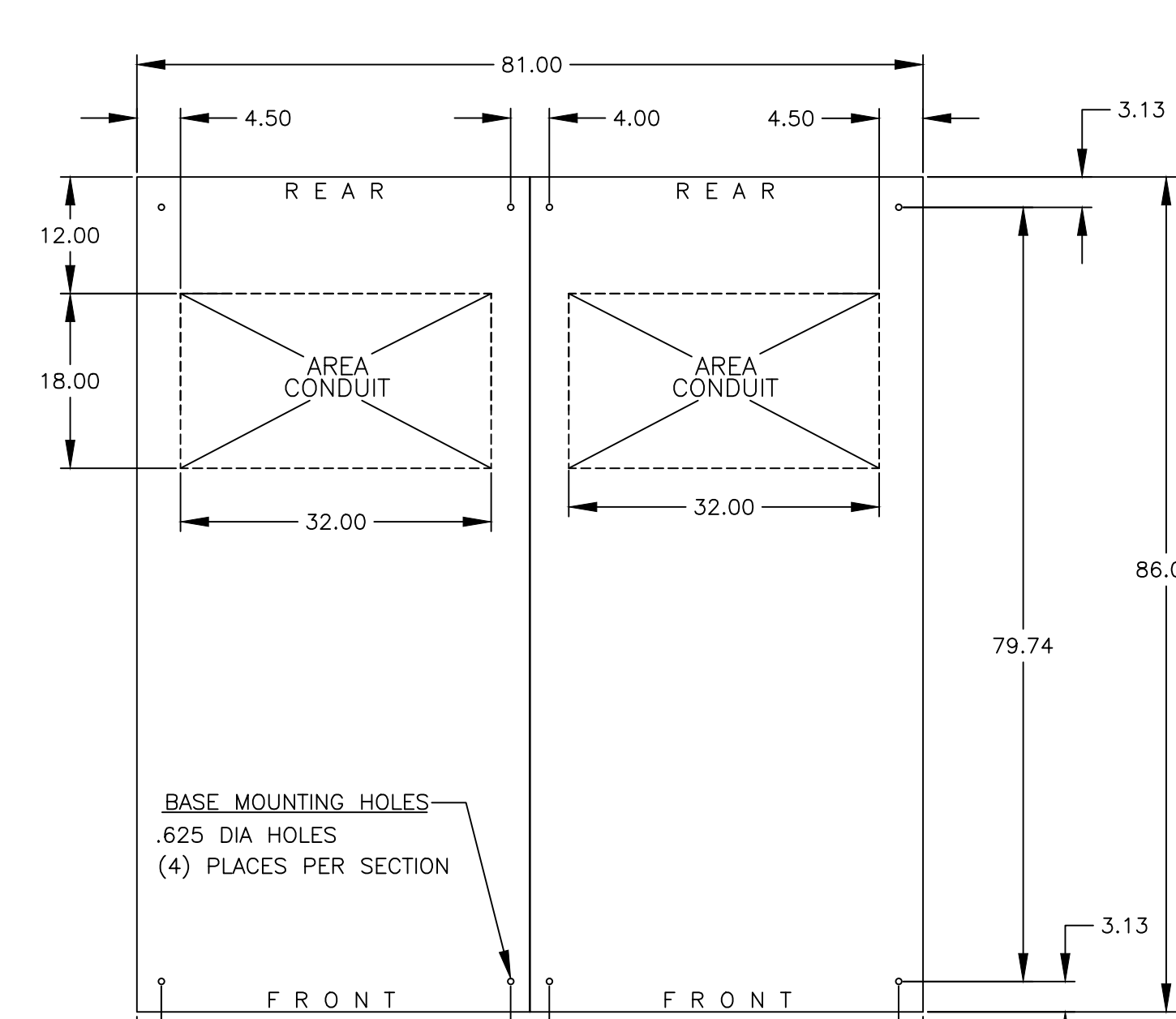


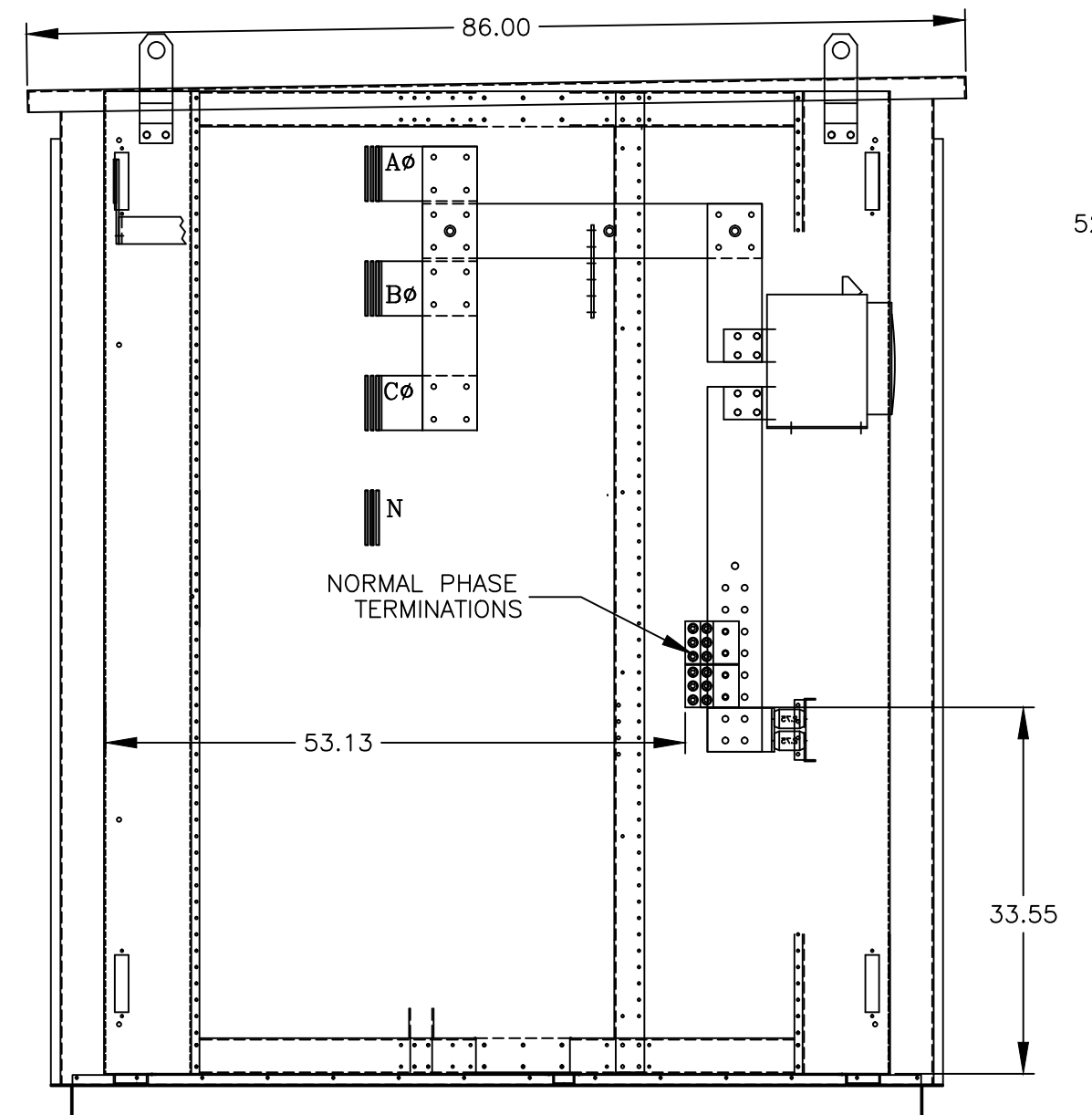
LEFT SIDE VIEW



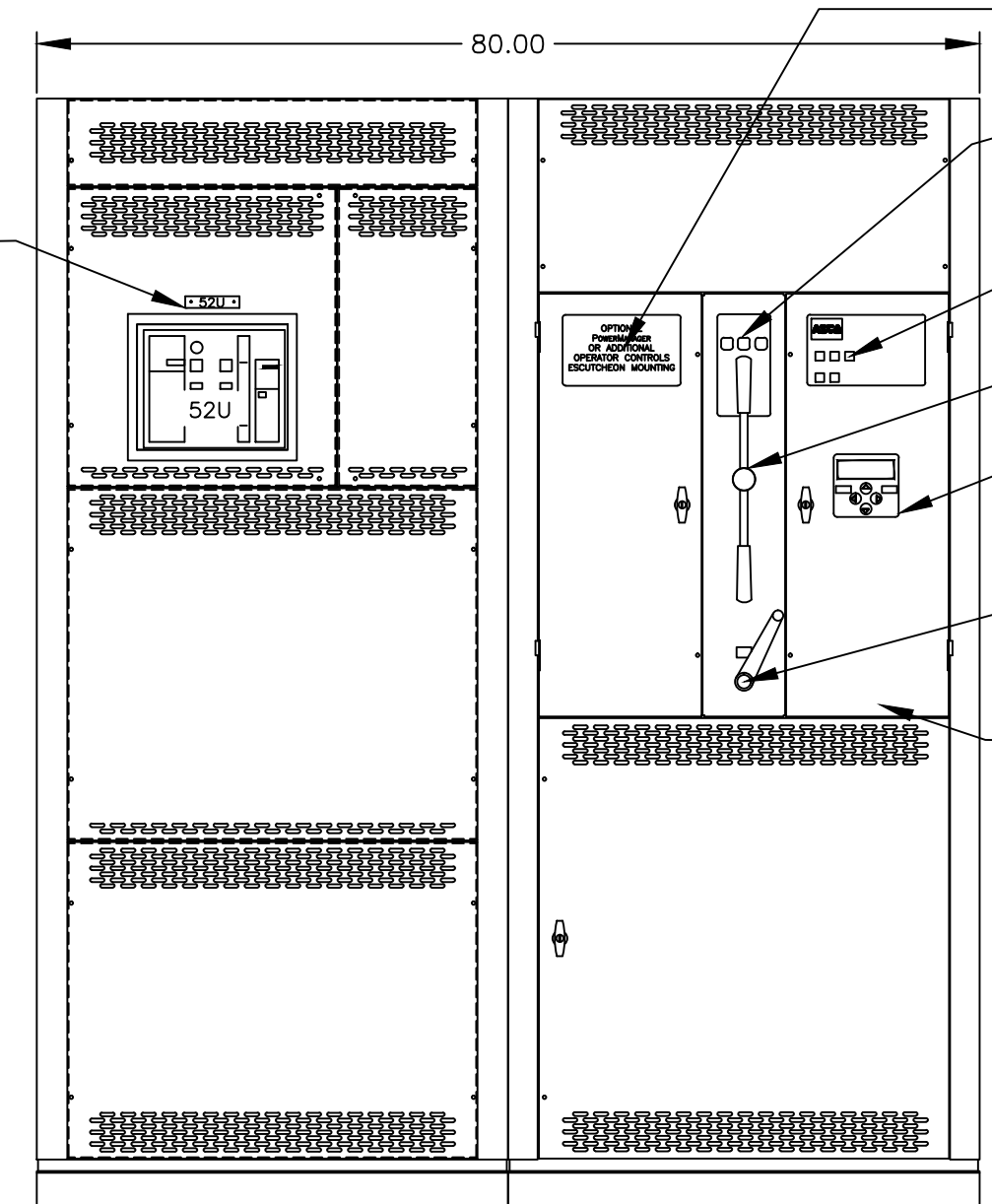
FRONT & REAR EXTERIOR VIEW



PLAN VIEW

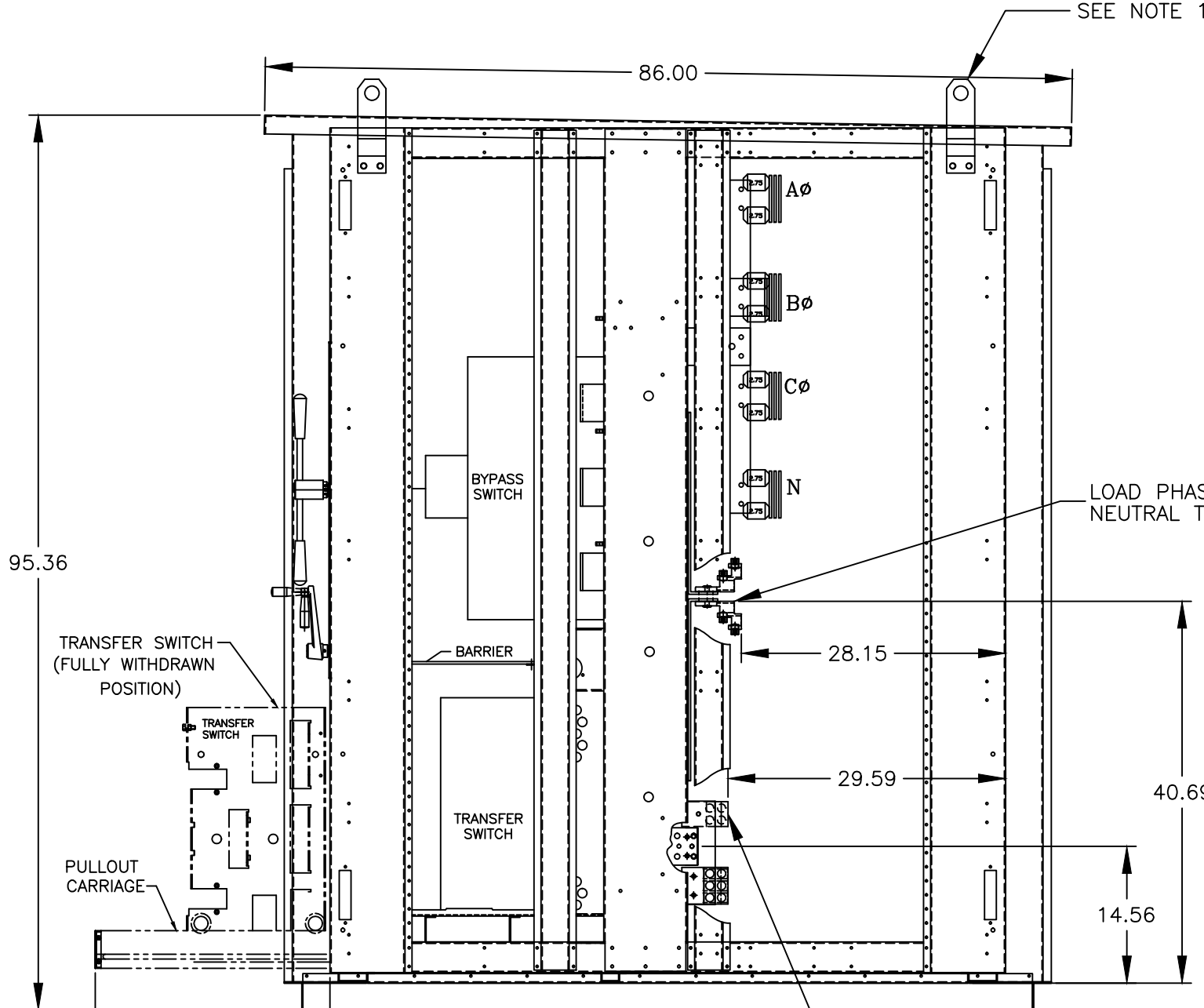


LEFT SIDE VIEW WITHOUT COVERS SECTION-1



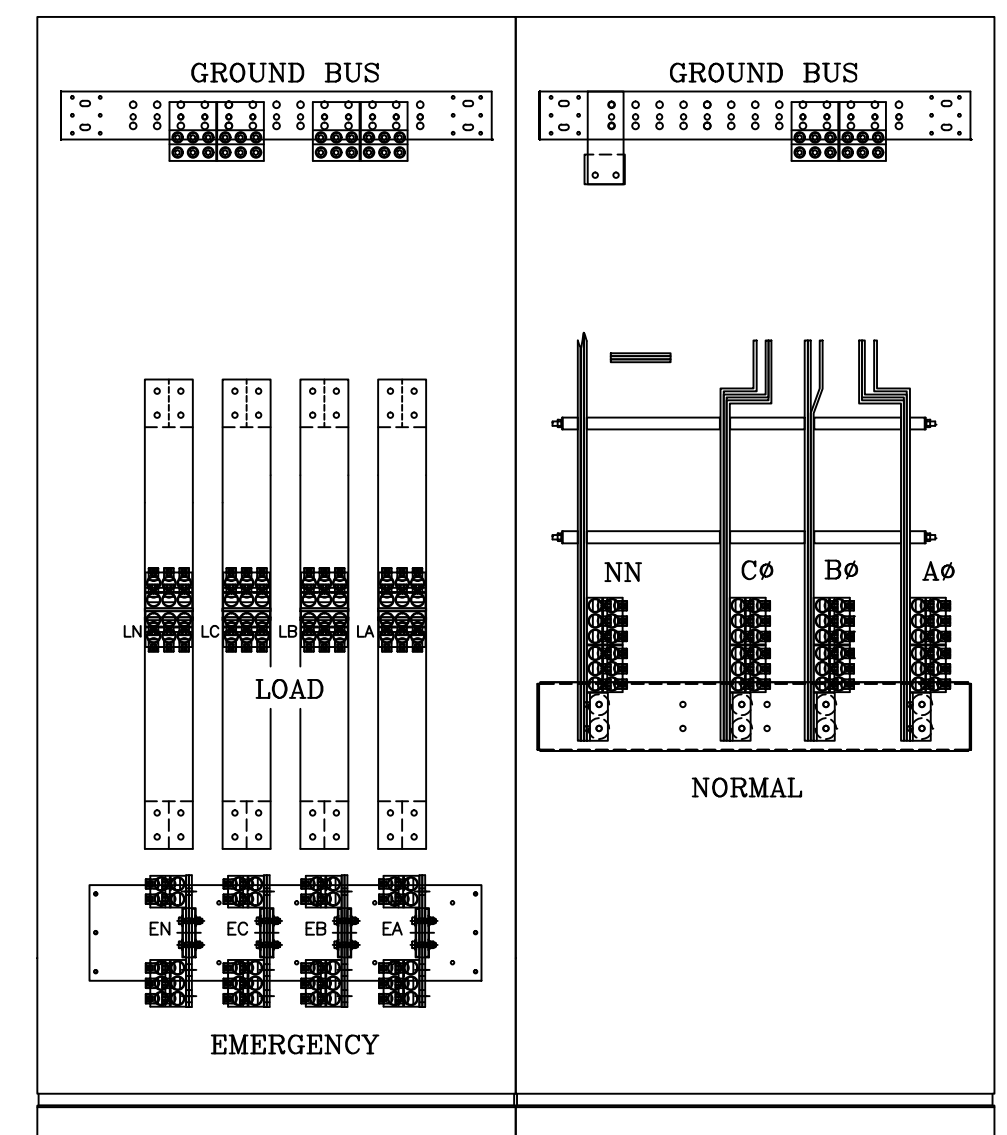
SECTION-1 SECTION-2 FRONT VIEW WITHOUT EXTERIOR DOORS

- OPTIONAL POWERMANAGER OR OPERATOR CONTROLS
- BYPASS/ISOLATION STATUS INDICATORS
- USER CONTROLS & INDICATORS
- BYPASS SWITCH MANUAL OPERATION HANDLE
- (FOR 7000 SERIES) CONTROLLER USER INTERFACE
- TRANSFER SWITCH MANUAL ISOLATION CRANK
- ACCESS TO CONTROLS & BYPASS SWITCH

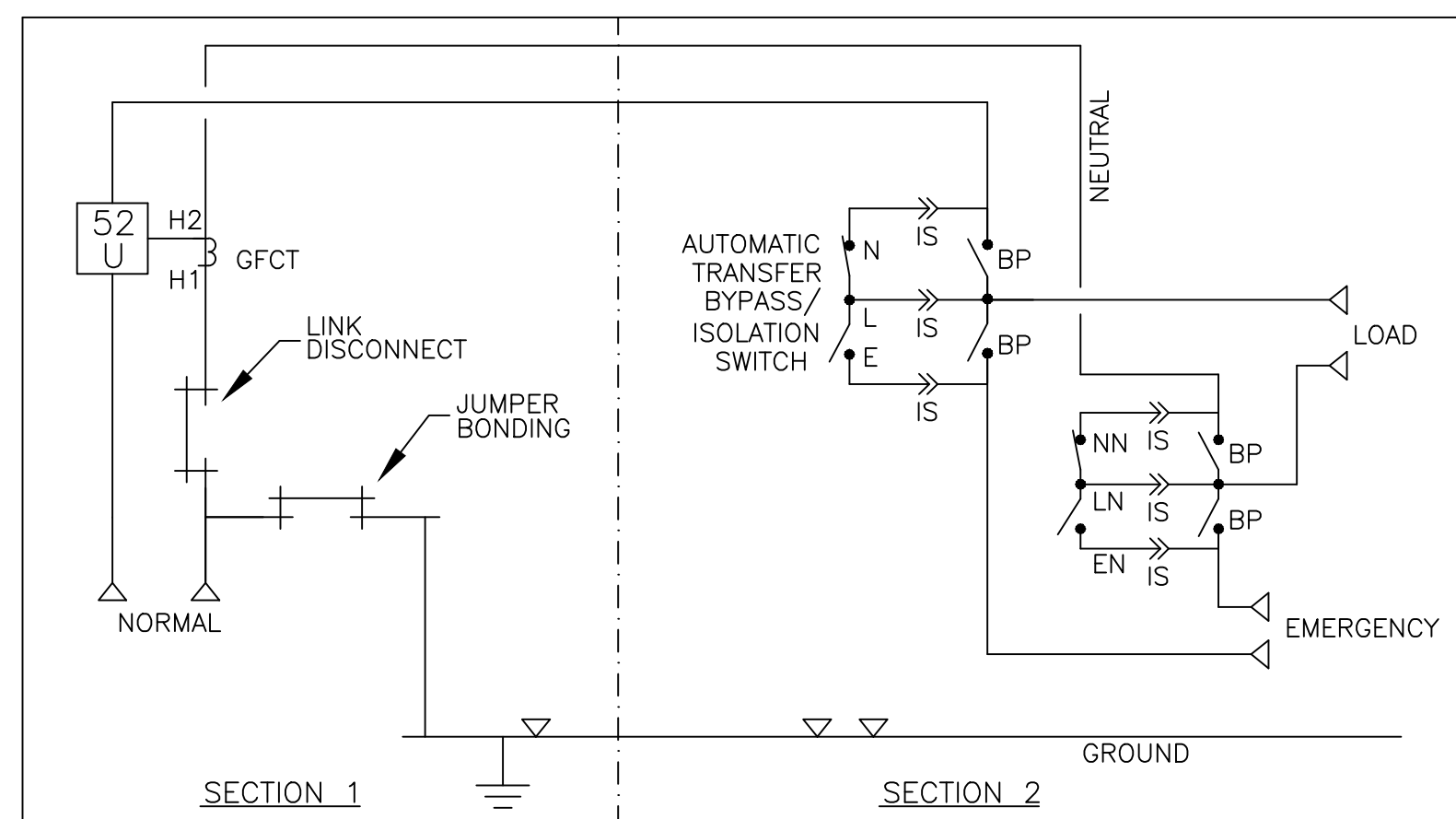


RIGHT SIDE VIEW WITHOUT COVERS SECTION-2

TRANSFER SWITCH CAN BE FULLY ISOLATED (DISCONNECTED)



REAR VIEW(SECTION-2) REAR VIEW(SECTION-1)



ONE LINE DIAGRAM (WITH SWITCHED/OVERLAPPING NEUTRAL)

GENERAL NOTES

1. TYPE 3R/3RX ENCLOSURE. FREE STANDING. FLOOR MOUNTED. CODE GAUGE FORMED FRAME CONSTRUCTION.
2. N.E.C. STD. GAUGE PAN TYPE DOORS AND REMOVABLE COVERS. ALL DOORS SUPPLIED WITH LOCKABLE HANDLES, COMMON KEYING, AND CAPTIVE SCREWS AS REQUIRED.
3. PADLOCKING PROVISIONS ARE INCLUDED: ISOLATION CRANK: THE TRANSFER SWITCH ISOLATION CRANK MAY BE PADLOCKED WITH THE TRANSFER SWITCH IN THE FULLY ISOLATED (DISCONNECTED) POSITION.
4. FINISH TYPE 3R: ANSI 61 GRAY POLYESTER SEMI-GLOSS ELECTROSTATIC POWDER. TYPE 3RX (R): EXTERIOR CONSTRUCTED OF CODE GAUGE TYPE 304 STAINLESS STEEL. TYPE 3RX (S): EXTERIOR CONSTRUCTED OF CODE GAUGE TYPE 316 STAINLESS STEEL.
5. RECOMMENDED CLEARANCES: FRONT: 48 INCHES; REAR: 36 INCHES
6. ALL BUS IS SILVER-PLATED COPPER, BASED ON 800A PER SQ. IN. DENSITY.
7. A FULL RATED NEUTRAL CONNECTION FOR EACH SOURCE AND THE LOAD IS OPTIONAL. WHEN PROVIDED IT IS IN ONE OF THE FOLLOWING FORMATS AS SPECIFIED BY THE CATALOG NO. NEUTRAL TYPE; A. SOLID (COPPER BUS) NEUTRAL B. SWITCHED NEUTRAL POLE C. OVERLAPPING NEUTRAL POLE (NOT AVAILABLE ON 7ADUB UNITS)
8. DESIGNED FOR FRONT AND REAR ACCESS. DOORS SUPPLIED IN REAR.
9. AIR VENTS PER MANUFACTURER'S STANDARDS.
10. EXTERIOR VENTS ARE SUPPLIED WITH POLYESTER DUST FILTERS.
11. FOR SPECIFIED TRANSFER SWITCH, REFER TO OPERATOR'S MANUAL PROVIDED WITH UNIT.
12. ⚡ DENOTES SPLIT. UNIT SHIP AS TWO (2) SECTIONS.
13. LIFTING PLATES: SECTIONS ARE SUPPLIED WITH LIFTING PLATES. INSPECT PLATES FOR DAMAGE AND TORQUE BOLTS TO 45 FT LBS BEFORE USE. REFER TO ANSI/NEMA PB 2.1 FOR PROPER HANDLING OF EQUIPMENT. AFTER INSTALLATION OF SECTION, REMOVE LIFTING PLATES. REINSTALL BOLTS INTO EXTERIOR HOLES AND TORQUE TO APPROX. 20 FT LBS.

SPECIFICATIONS

1. SERVICE VOLTAGE: SYSTEM RATING: 2500 AMPS, 3000 AMPS, 3φ, 4W. GROUND BUS- 600 AMPS UL SHORT CIRCUIT RATING- 100,000 AIC RMS SYM @ 480V (LOWEST RATED DEVICE)
2. NEUTRAL BUS: 3000 AMPS
3. APPLICABLE LABELS: U.L. 891- SUITABLE ONLY FOR USE AS SERVICE EQUIPMENT.

CABLING NOTES

1. ALL SIZES SUPPLIED STANDARD WITH MECHANICAL (SCREW TYPE) LUGS. A. LUG MATERIAL: ALUMINUM ALLOY 6061-T6 WITH ELECTRO TIN PLATED FINISH. B. SCREW MATERIAL: ALUMINUM ALLOY 6262-T9 WITH ELECTRO TIN PLATED FINISH. C. UL LISTED, CSA CERTIFIED. D. LUG SCREW TIGHTENING TORQUE PER UL 486B: 19 FT-LBS. E. SUITABLE WIRE BENDING SPACE IS PROVIDED.
2. OPTIONAL COPPER CRIMP LUGS MAY BE SUPPLIED. A. LUG MATERIAL: HIGH CONDUCTIVITY WROUGHT COPPER FINISH, ELECTRO TIN PLATED. B. UL LISTED, CSA CERTIFIED. C. LUG MOUNTING HARDWARE TIGHTENING TORQUE: (REFER TO WITHSTAND CURRENT RATING LABEL PROVIDED ON EACH TRANSFER SWITCH). D. SUITABLE WIRE BENDING SPACE IS PROVIDED.
3. CONSULT FACTORY FOR OTHER TERMINATION REQUIREMENTS.

NOTES 2500-3000 AMPS

1. SUPPLIED WITH STANDARD MECHANICAL (SCREW TYPE) LUGS ON THE NORMAL, EMERGENCY & LOAD BUS STABS. LUGS SUITABLE FOR CONNECTION OF TEN (10) #2 AWG-600MCM CU/AL CABLE (SEE NOTE "A" BELOW) PER PHASE AND NEUTRAL. A. SUITABLE WIRE BENDING SPACE IS PROVIDED AS PER NEC.
2. OPTIONAL COPPER CRIMP LUGS MAY BE SUPPLIED. (REFER TO CRIMP LUG INSTALLATION DATA PROVIDED WITH UNIT FOR FULL INSTALLATION DETAILS). A. SUITABLE WIRE BENDING SPACE IS PROVIDED PER THE NEC.
3. GROUND LUGS ARE PROVIDED STANDARD AS FOLLOWS; (36) 1/0 - 750MCM CU/AL CABLE

CIRCUIT BREAKER: ITEM 52U

SQUARE "D" 100% RATED TYPE 'NW', 3000AF/3000AT OR 2500AF/2500AT STATIONARY MOUNTED, MANUALLY OPERATED, WITH LONG DELAY, SHORT DELAY, INSTANTANEOUS AND GROUND FAULT TRIP SETTINGS, 100,000 AIC RMS SYM. @ 480V.

M	253518	BG	RN	03/09/15
L	239184	DP	DP	10/2/12
K	236194	RBR	RN	03/13/12
J	231838	LK	RN	05/03/11
H	228236	SV	RN	07/15/10
N	262311	BG	RN	07/25/16

PROJECT NAME: SERVICE ENTRANCE 2500A-3000A, TYPE 3R ENCLOSURE		REV. TO SHEET	ECN NO.	BY	APP.	DATE
OUTLINE		MOUNTING				
GAUB 2500A-3000A, SERVICE ENTRANCE BREAKER ON NORMAL						
TYPE 3R/3RX 96 X 81 X 86						
DRAWN BY	DATE	MANUFACTURING TOLERANCES TO BE IN ACCORDANCE WITH ASCO PROCEDURE MP-1-003. FOR PLASTIC PARTS SEE MP-1-055	ASSM. REF. NO.	COMPUTER GENERATED DRAWING		
CHECKED	DATE	PROPERTY OF ASCO POWER TECHNOLOGIES. USE PERMITTED FOR OUR WORK ONLY. ALL RIGHTS OF DESIGN OR INVENTION ARE RESERVED.		SCALE	1/16" = 1" SIZE	DS
PROJECT APPROVAL	DATE			DWG. NO. 740256-009		
FINAL APPROVAL	DATE			DRAWING NO. ECN NO. 262311 SHEET 1 OF 1		

