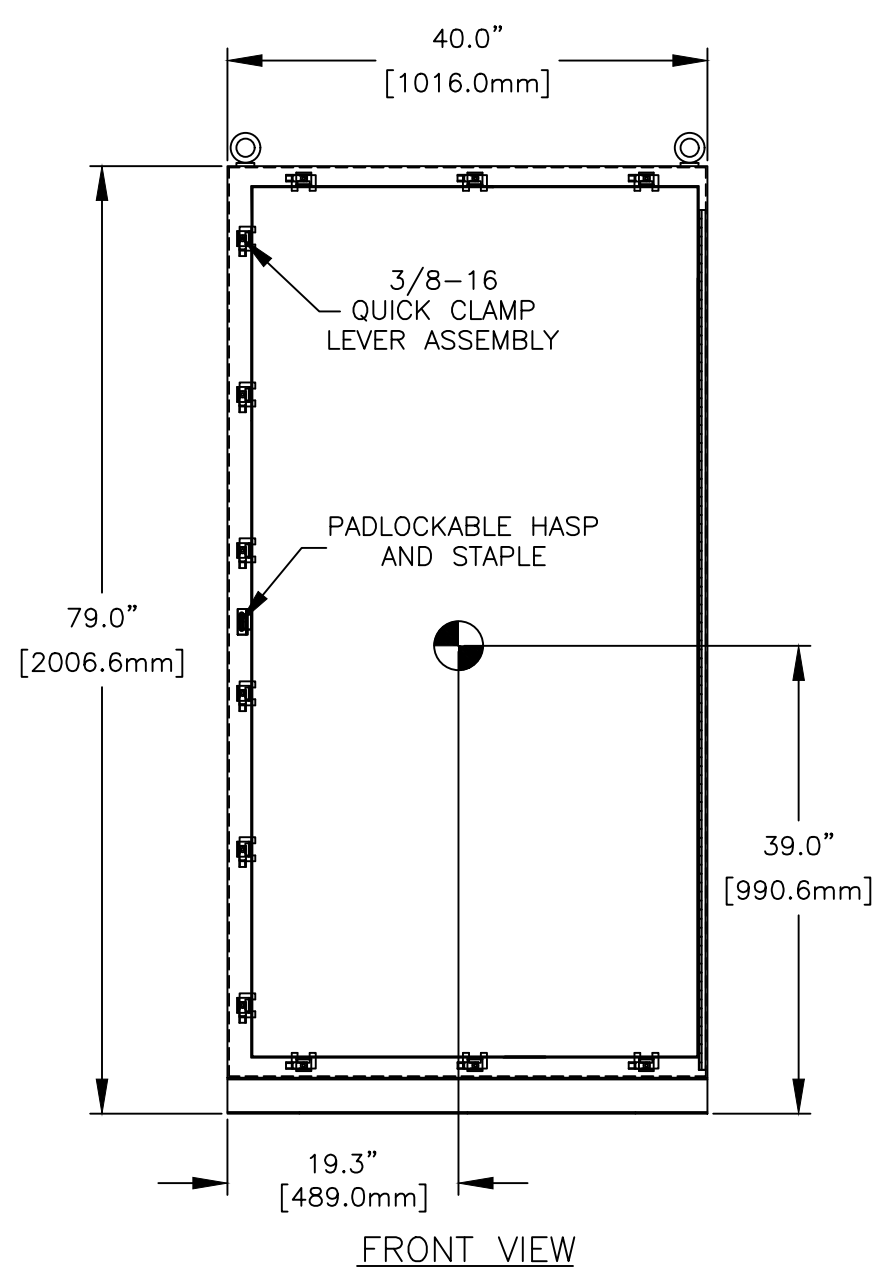
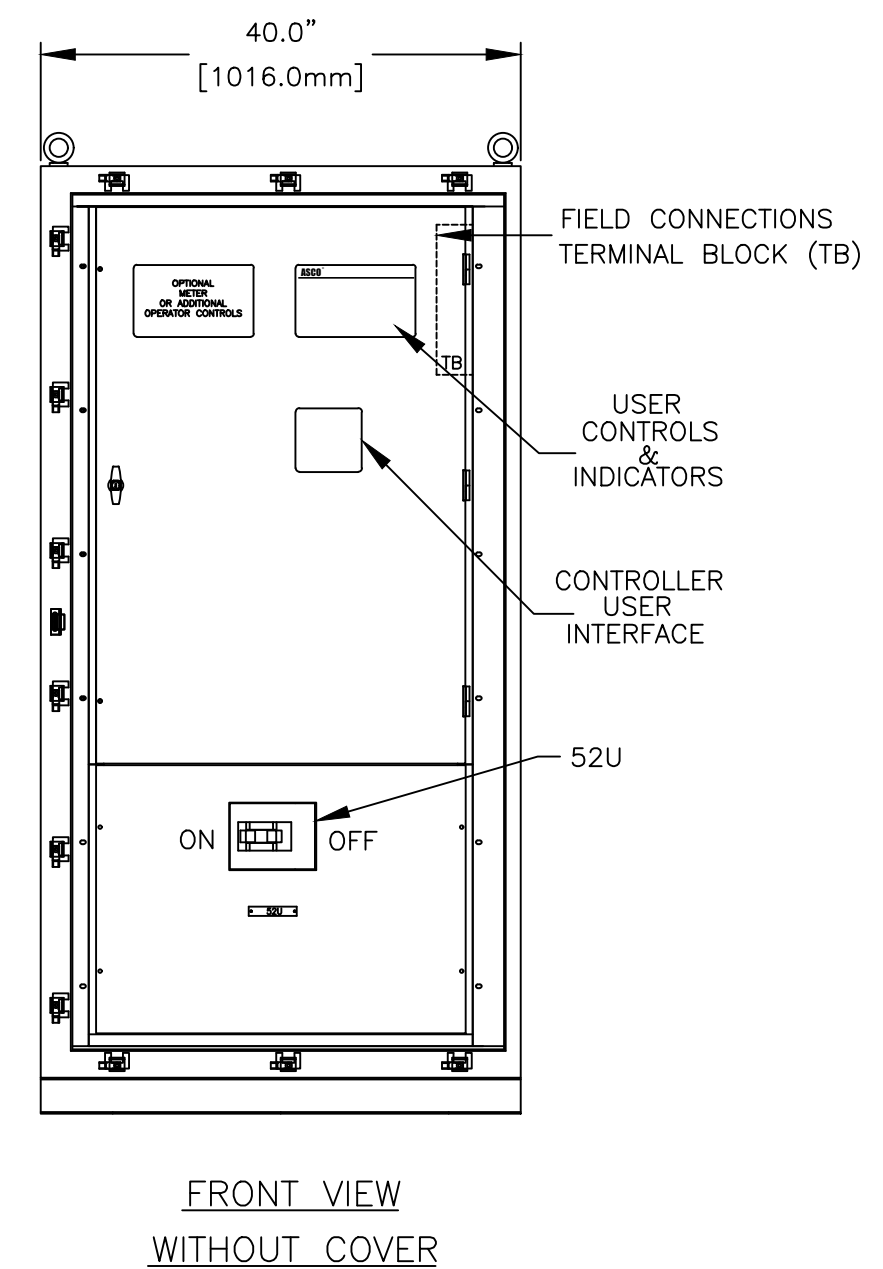


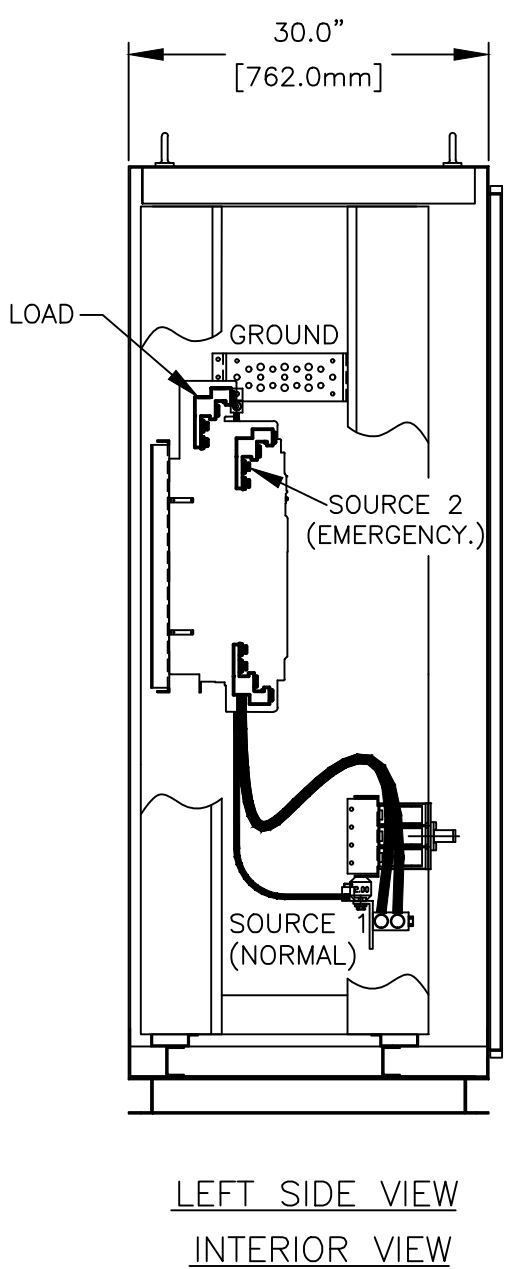
TOP VIEW



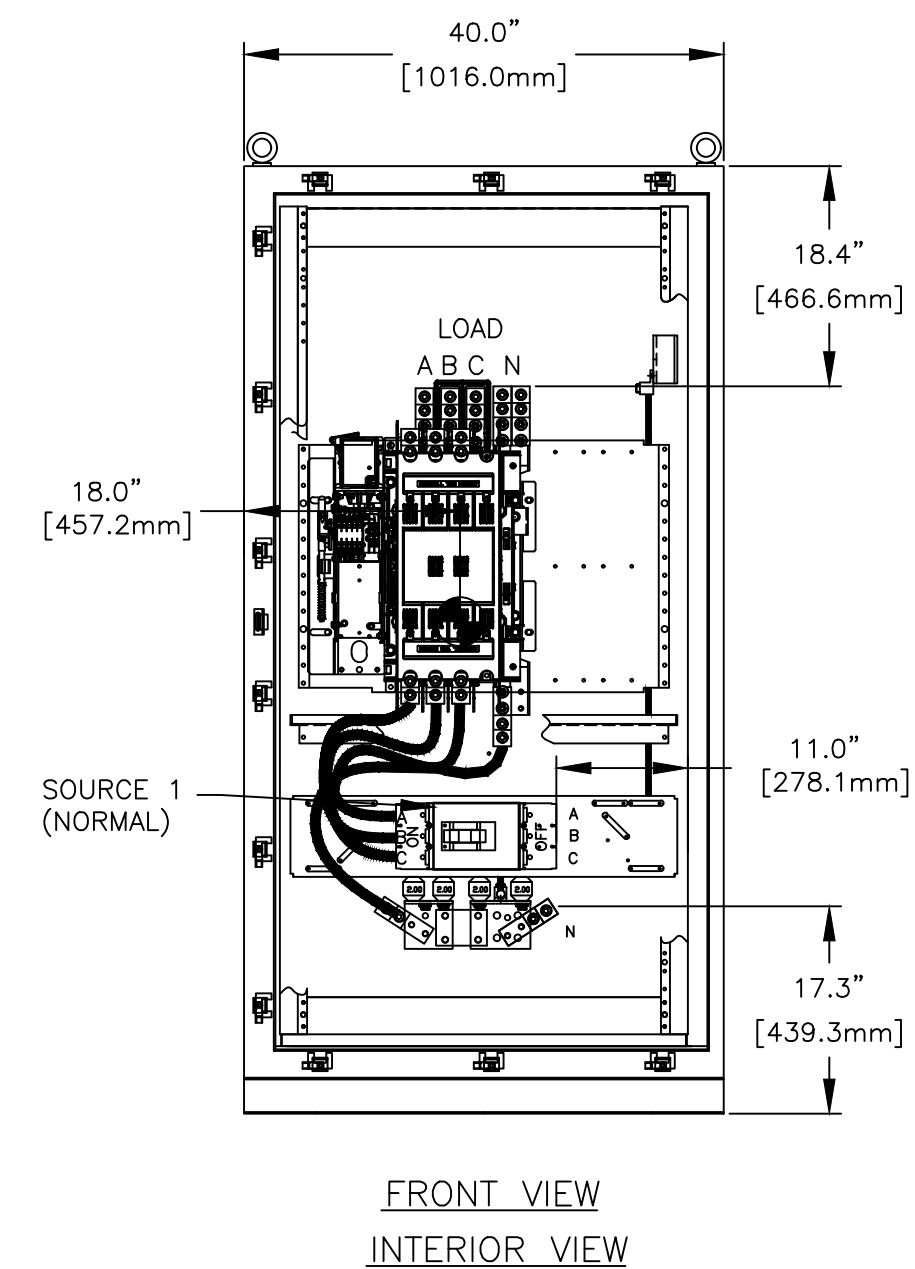
FRONT VIEW



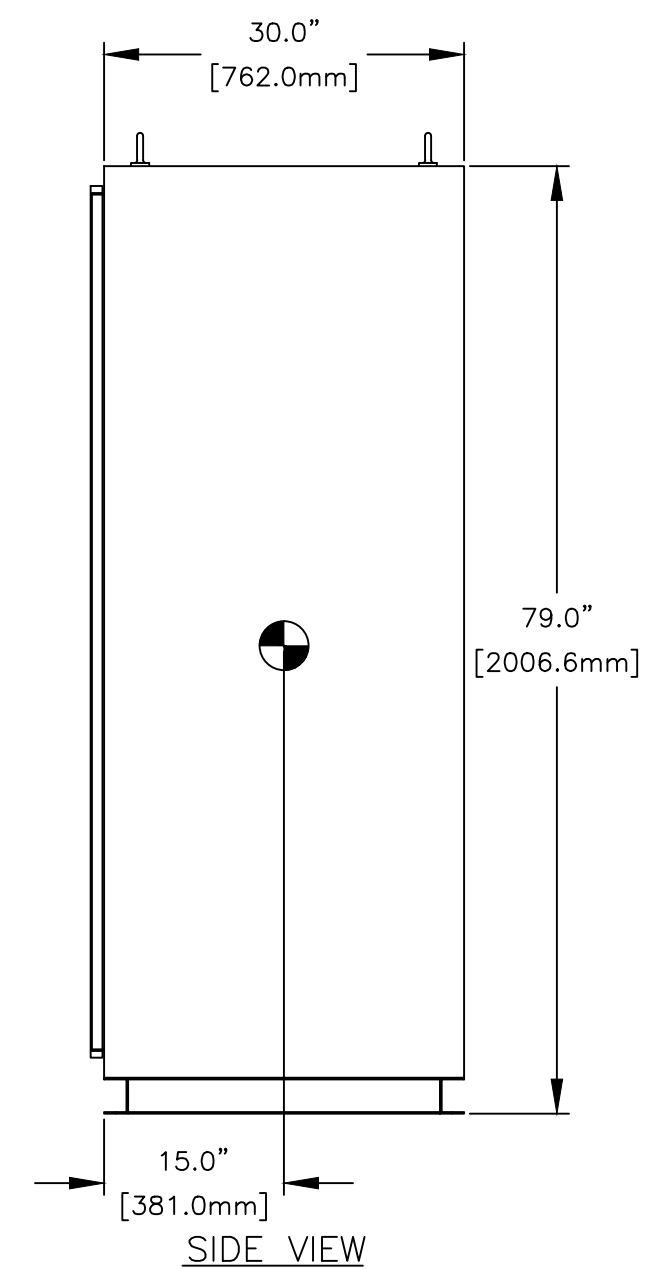
FRONT VIEW WITHOUT COVER



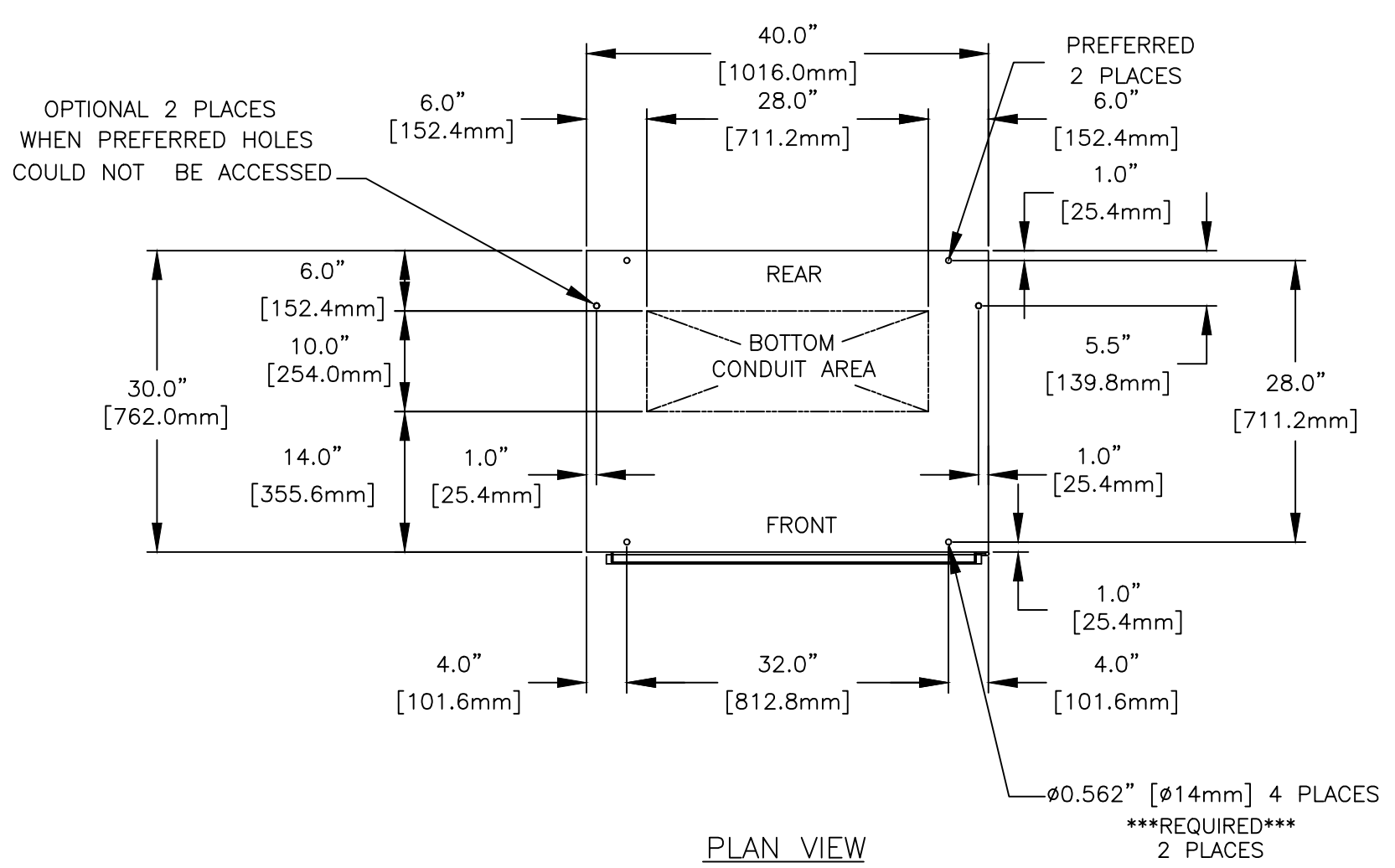
LEFT SIDE VIEW INTERIOR VIEW



FRONT VIEW INTERIOR VIEW

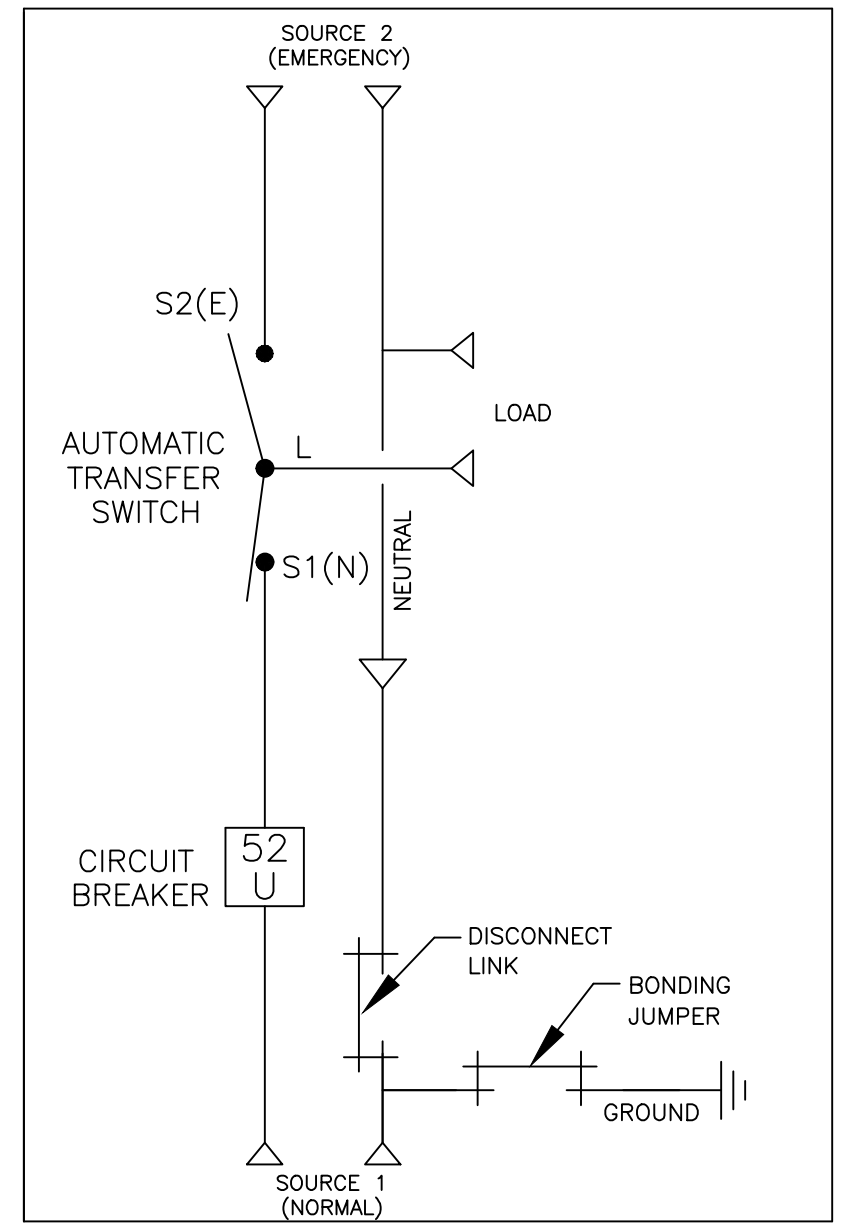


SIDE VIEW

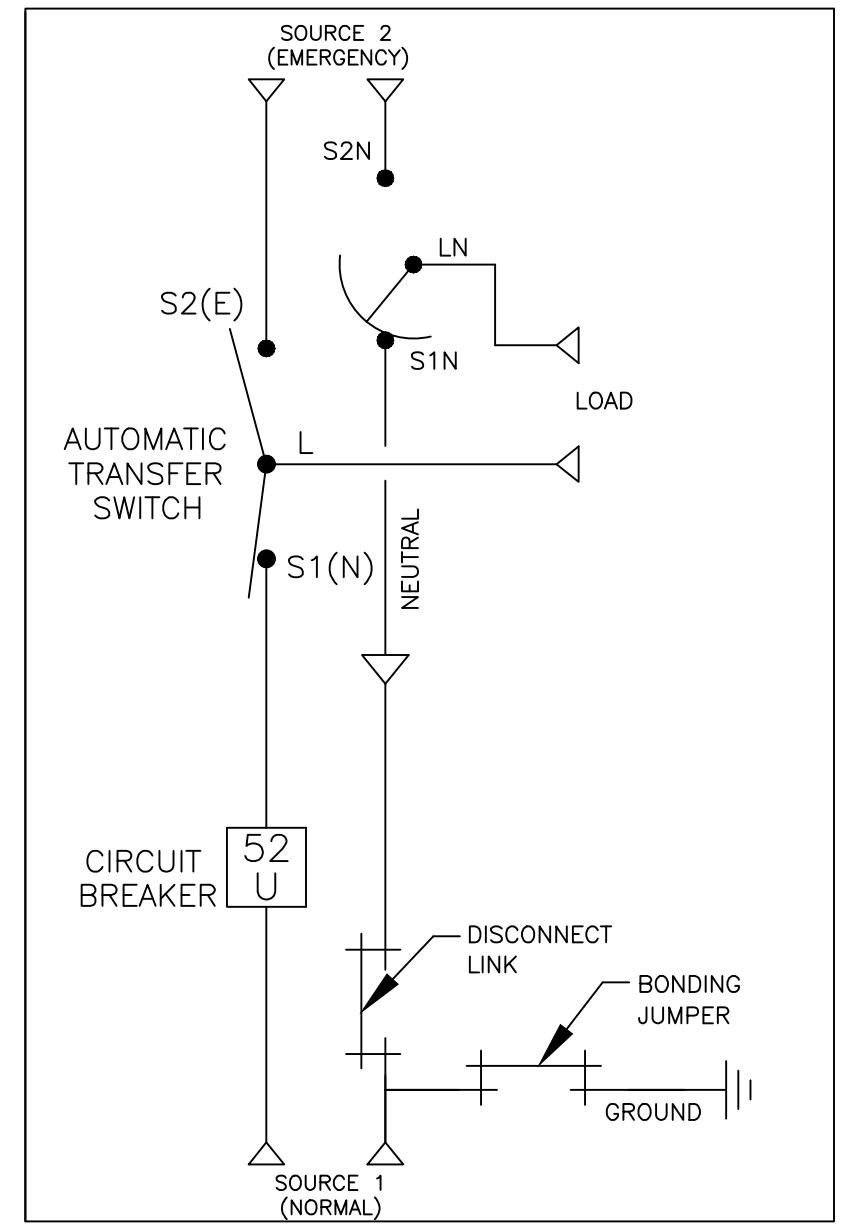


PLAN VIEW

ONE LINE DIAGRAMS



(WITH SOLID NEUTRAL)



(WITH SWITCHED NEUTRAL)

GENERAL NOTES

- FLOOR MOUNTED ENCLOSURE.  
TYPE 4 CONSTRUCTED FROM CODE GAUGE STEEL.  
FINISH: TYPE 4, ANSI 61 GRAY POLYESTER SEMI GLOSS ELECTROSTATIC POWDER.  
TYPE 4X EXTERIOR MANUFACTURED FROM CODE GAUGE STAINLESS STEEL.  
(P) EXTERIOR CONSTRUCTED FROM CODE GAUGE TYPE 304 STAINLESS STEEL.  
(V) EXTERIOR CONSTRUCTED FROM CODE GAUGE TYPE 316 STAINLESS STEEL.
- EXTERIOR DOORS HAVE PADLOCKABLE HASP & STAPLE.
- DESIGNED FOR FRONT ACCESS.
- RECOMMENDED CLEARANCES:FRONT: FRONT: 38" [965mm] REAR: NONE
- CENTER OF GRAVITY
- APPROXIMATE WEIGHT: 1154 LBS [523 KG].

SYSTEM NOTES

- SYSTEM RATING: 600 AMPS.  
SOURCE 1 (NORMAL) SHORT CIRCUIT RATING:125,000 RMS SYM @ 240V  
100,000 RMS SYM @ 480V  
SOURCE 2 (EMERGENCY) SHORT CIRCUIT RATING: 65,000 RMS SYM @ 240V  
42,000 RMS SYM @ 480V (SWITCHED AND SOLID NEUTRAL).  
35,000 RMS SYM @ 480V (OVERLAPPING NEUTRAL).  
SOURCE 2 (EMERGENCY) SHORT CIRCUIT RATING MAY BE INCREASED BY UTILIZING A SPECIFIC OVERCURRENT PROTECTIVE DEVICE AS LISTED ON THE TRANSFER SWITCH.
- ALL BUS IS SILVER-PLATED COPPER, BASED ON 1000A PER SQ. IN. DENSITY.
- GROUND: 20% RATED.
- NEUTRAL: 100% RATED.
- APPLICABLE LABEL(S): U.L. 1008, SUITABLE ONLY FOR USE AS SERVICE EQUIPMENT.

TRANSFER SWITCH

- J FRAME AUTOMATIC TRANSFER SWITCH.
- TRANSFER SWITCH RATING: 600 AMPS.  
SHORT CIRCUIT RATING WHEN PROTECTED BY A CIRCUIT BREAKER  
TIME RESPONSE, MAXIMUM 0.05 SECONDS:  
42,000 RMS SYM @ 480V (SWITCHED AND SOLID NEUTRAL).  
35,000 RMS SYM @ 480V (OVERLAPPING NEUTRAL).
- A FULL RATED NEUTRAL CONNECTION FOR EACH SOURCE AND THE LOAD IS OPTIONAL. WHEN PROVIDED IT IS IN ONE OF THE FOLLOWING FORMATS.  
A. SOLID NEUTRAL  
B. SWITCHED NEUTRAL POLE  
C. OVERLAPPING NEUTRAL POLE (NOT AVAILABLE ON CLOSED OR DELAYED TRANSITION)
- UL 1008 OR CSA C22.2 NO.178.1

TERMINATIONS 600A

- SUPPLIED WITH MECHANICAL (SCREW TYPE) LUGS FOR CU/AL CABLE.  
SOURCE 1 (NORMAL): (2) 3/0 - 500 MCM PER PHASE & NEUTRAL  
LOAD: (2) 3/0 - 600MCM PER PHASE & NEUTRAL  
SOURCE 2 (EMERGENCY): (2) 3/0 - 600MCM PER PHASE & NEUTRAL  
GROUND: (6) 1/0 - 600MCM.  
A. SUITABLE WIRE BENDING SPACE IS PROVIDED AS PER NEC.
- OPTIONAL LUGS MAY BE SUPPLIED.

CIRCUIT BREAKER: ITEM 52U

- SQUARE "D" 80% RATED TYPE "LL", MOLDED CASE CIRCUIT BREAKER, 600AF/600AT MANUALLY OPERATED, ELECTRONIC TRIP UNIT WITH LONG AND INSTANTANEOUS TRIP SETTINGS.  
SHORT CIRCUIT RATING: AIC 100,000 RMS SYM @ 480V.
- NOT AVAILABLE AT 100% RATED
- U.L. 489

WIRING/CABLING

- USE 90°C MINIMUM CU/AL WIRE FOR POWER CABLES.
- WIRE SIZE TO BE BASED ON AMPACITY OF 75°C WIRE.
- USE 60°C MINIMUM CU WIRE FOR CONTROLS.

SEE TABLE 1 FOR METRIC TERMINATIONS

| TABLE 1 |                    |
|---------|--------------------|
| 14 AWG  | 2.5mm <sup>2</sup> |
| 6 AWG   | 16mm <sup>2</sup>  |
| 4 AWG   | 25mm <sup>2</sup>  |
| 1/0 AWG | 50mm <sup>2</sup>  |
| 2/0 AWG | 70mm <sup>2</sup>  |
| 3/0 AWG | 95mm <sup>2</sup>  |
| 4/0 AWG | 120mm <sup>2</sup> |
| 250 MCM | 120mm <sup>2</sup> |
| 300 MCM | 150mm <sup>2</sup> |
| 350 MCM | 185mm <sup>2</sup> |
| 400 MCM | 240mm <sup>2</sup> |
| 500 MCM | 240mm <sup>2</sup> |
| 600 MCM | 300mm <sup>2</sup> |
| 750 MCM | 400mm <sup>2</sup> |

|   |      |   |                 |                            |                |
|---|------|---|-----------------|----------------------------|----------------|
| PROJECT NAME:   |      | REV. TO SHEET   |                 | DATE                       |                |
| OUTLINE   |      | MOUNTING  |                 | THIRD ANGLE PROJECTION     |                |
| JAUS 600A, 80% RATED LL SE BREAKER ON SOURCE 1 (NORMAL) |      |   |                 |                            |                |
| TYPE 4/4X, 79 X 40 X 30                                 |      |   |                 |                            |                |
| BY  | DATE | MANUFACTURING TOLERANCES TO BE IN ACCORDANCE WITH ASCO PROCEDURE MP-1-003. FOR PLASTIC PARTS SEE MP-1-055 | ASSEM. REF. NO. | COMPUTER GENERATED DRAWING |                |
| DRAWN BY  | MCH  | 07-28-23  |                 | SCALE 1/16" = 1" SIZE DS   |                |
| CHECKED   |      |   |                 | DWG. NO.                   | 805717-007     |
| PROJECT APPROVAL  |      |   |                 | DRAWING A                  | ECN NO. 307188 |
| FINAL APPROVAL  |      |   |                 | REV.                       | SHEET 1 OF 1   |

