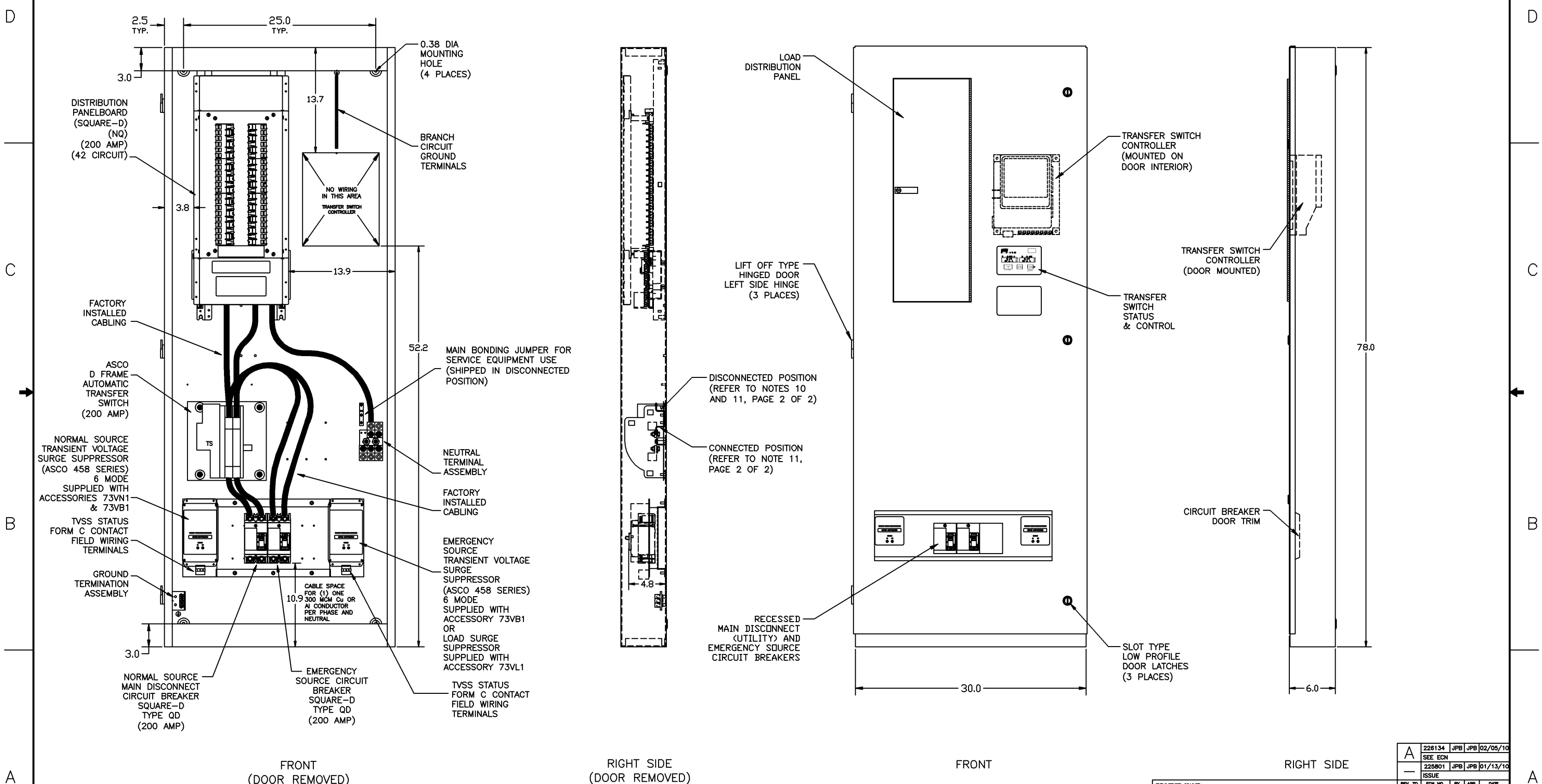


# ASCO Series 300L Power Transfer Load Center Rated 200 amps, 240V Single Phase, 3 Wire



PROJECT NAME:		REV. TO SHEET	EDN. NO.	BY	APP.	DATE
OUTLINE		226134	JPB	JPB		02/05/10
D300L SERIES, 200 AMP		—	—	—	—	—
POWER TRANSFER LOAD CENTER		225801	JPB	JPB		01/13/10
MANUFACTURING TOLERANCES TO BE IN ACCORDANCE WITH ASCO PROCEDURE MP-1-003. FOR PLASTIC PARTS SEE MP-1-005.		ISSUE		THIRD ANGLE PROJECTION		
DRAWN BY		DATE		ASSEMBLY REF. NO.		
JPB		01/13/10		COMPUTER GENERATED DRAWING		
CHECKED		DATE		SCALE		
PROJECT APPROVAL		DATE		SIZE DS		
FINAL APPROVAL		DATE		DWG. NO.		
JPB		01/13/10		884339-006		
ASCO		ASCO POWER TECHNOLOGIES, L.P.		SHEET		
FLORHAM PARK, NEW JERSEY 07932 U.S.A.		DRAWING REV. A		10F2		
		ECH. NO. 226134				

# ASCO Series 300L Power Transfer Load Center Rated 200 amps, 240V Single Phase, 3 Wire

**Notes:**

- 1) Power Transfer Load Center constructed in accordance with UL 67 Standard for Panelboards. Suitable for Use as Service Equipment.
- 2) Automatic Power Transfer Switch: ASCO D300, 2 pole, 200 amp, 240 vac. UL Listed to UL 1008 Standard for Transfer Switching Equipment.

10) Main Bonding Jumper factory installed in the Disconnected position.

11) When used for Service Entrance the Main Bonding Jumper is to be removed from the Disconnected position and re-installed in the Connected position, with the existing hardware and one (1) additional 1/4-20 thread forming screw, which connects the Main Bonding Jumper to the Neutral Terminal Assembly.

**Transfer Controller – ASCO Group 1 Automatic Transfer Switch Controller including:**  
 Automatic Engine Starting Contacts  
 Single Phase voltage sensing of Normal and Emergency sources.  
 Frequency sensing of Emergency source.  
 Momentary Normal source outage time delay, adjustable (1 or 3 sec.)  
 Retransfer to Normal time delay, adjustable (1 sec. to 30 min.)  
 Unloaded Engine Running (cooldown) time delay, (5 min.)

**Operator Interface: Membrane style with LED status indicators–**  
 "Normal Source Available" (green)  
 "Emergency Source Available" (red)  
 "Transfer Switch Connected to Normal" (green)  
 "Transfer Switch Connected to Emergency" (red)

"Transfer Switch Test" pushbutton  
 "Bypass Time Delay Bypass" pushbutton  
 "Set Engine Exerciser" pushbutton

**Remote Control Features – Customer provided dry contacts, field wired to provide "Test", "Transfer to Emergency", "Inhibit Transfer to Emergency", "Bypass Transfer Time Delay".**

**Accessory 11BG (Optional) – Programmable Engine Exerciser & Source Availability Signal Module providing the following features:**

**Programmable Engine Exerciser:** A programmable seven (7) day or fourteen (14) day electronic time switch for automatic weekly testing of the engine generator set with or without load. Each day of the week is individually programmable.

**Source Availability Signalling:** One Form C contact each for normal & emergency sources signal the acceptability of the source as sensed by the Group 1 controller. The signal operates in conjunction with the source availability LED status indication provided on the operator interface.

**3) Short Circuit Ratings:**

**(Mains):** Normal Source – 22kA at 240vac (Utility Main Disconnect circuit breaker), Square-D Cat. Type QD, 2 pole, 200 amps.

ACC. 117CB2

Emergency Source – 22kA at 240vac Square-D Cat. Type QD, 2 pole, 200 amps.

**(Branch):** Branch ratings as follows when used with the specified branch devices.  
 22kA using Sq-D QO-VH or QOB-VH rated: 2 pole 150a, 3 pole 35-150a.  
 10kA using Sq-D QO or QOB rated: 1 pole 15-70a, 2 pole 15-125a, 3 pole 15-30a.

4) Panelboard: Square-D NQ, 225a, 240v, single phase with 100% rated neutral. 42 Circuits, accepts bolt-on or plug-on branch devices.

5) Accessory 73VN1, 73VB1, OR 73VL1 (OPTIONAL): Transient Voltage Surge Suppression – ASCO 458 Series TVSS, 6 mode protection, L-L, L-N, L-G, N-G, 240/120V Integral LED status indication per phase signalling Service Available & Status OK. One (1) Form C contact connected to terminal block to signal Status OK.

Supplied as one of the following accessories–  
 Acc. 73VN1: (1) TVSS connected to Normal source only.  
 Acc. 73VB1: (2) TVSS' each connected to Normal & Emergency sources.  
 Acc. 73VL1: (1) TVSS connected to Load only.

6) Enclosure:  
 Type 1 Construction in accordance with UL 50 & UL 67.  
 Finishes – All interior and exterior surfaces: Textured Polyester Powder Coat, Light Gray (RAL 7035)

7) Grounding provisions for Normal, Emergency & Load.

8) Overall Dimensions: 78"H x 30"W x 6"D

9) Weight: Approx. 250 lbs.

REV. TO SHEET	ECN NO.	BY	APP.	DATE
A	226134	JPB	JPB	02/05/10
—	225801	JPB	JPB	01/13/10
ISSUE				

PROJECT NAME:		MANUFACTURING TOLERANCES TO BE IN ACCORDANCE WITH ASCO PROCEDURE MP-1-003. FOR PLASTIC PARTS SEE MP-1-005.		ASSM. REF. NO.	COMPUTER GENERATED DRAWING
OUTLINE		D300L SERIES, 200 AMP POWER TRANSFER LOAD CENTER		SCALE 1/1	SIZE DS
DRAWN BY	DATE	PROPERTY OF ASCO POWER TECHNOLOGIES. USE PERMITTED FOR OUR WORK ONLY. ALL RIGHTS OF DESIGN OR INVENTION ARE RESERVED.		DWG. NO.	884339-006
CHECKED		ASCO		DRAWING REV. A	ECN NO. 226134
PROJECT APPROVAL		ASC POWER TECHNOLOGIES, L.P. FLORHAM PARK, NEW JERSEY 07932 U.S.A.		SHEET	20F2
FINAL APPROVAL	JPB 01/13/10				