

A man in a dark blue suit and glasses is pointing at a laptop screen. Another man in a grey sweater is looking at the screen from behind. They are in a server room with blue lighting and server racks in the background.

# Partnering to Create Data Centers of the Future

## Data Center Lifecycle Solutions

[se.com/dcotf](https://se.com/dcotf)

Life Is On

**Schneider**  
Electric

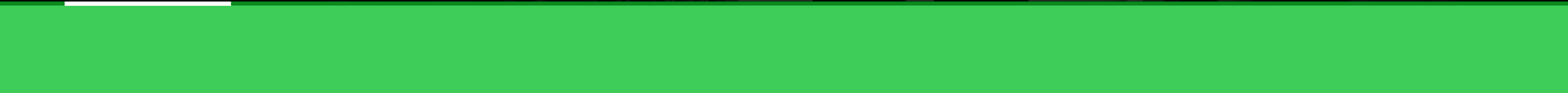


# Table of contents





# Introduction





# Your Data Center Partner

In an increasingly data-driven world, the role and responsibility of data centers is changing rapidly. It's not always easy to keep pace and make sure that your data center is on the leading edge, heading toward net zero, and staying competitive. The key is having the right partner on your side.

Schneider Electric is a global leader in sustainable data center infrastructure technology. Our solutions are designed to be adaptive to respond to changing demands and expectations, resilient to withstand challenges to power availability, and efficient to reduce costs — all of which can contribute to lowering your environmental impact. With operations in more than 100 countries and decades of experience deploying scalable data centers, we're your digital partner for sustainability and efficiency.

## The power of partnership



We continuously invest in **sustainable** technology, with **5%** of revenues going to **R&D**, along with backing from SE Ventures, a **€500M** venture capital fund.



No other data center solutions provider covers the full lifecycle — **Design, Build, Operate, and Maintain** — with touchpoints across IT, Buildings, Power, and Sustainability.



The world's **10** leading cloud and service providers trust our solutions. In 2022, we helped bring **5 GW** of new construction online in **35** countries on **six** continents.



We advise **40%** of **Fortune 500** companies on sustainability and have consistently earned **top global corporate sustainability** rankings — including being honored **12 consecutive years** by Corporate Knights.

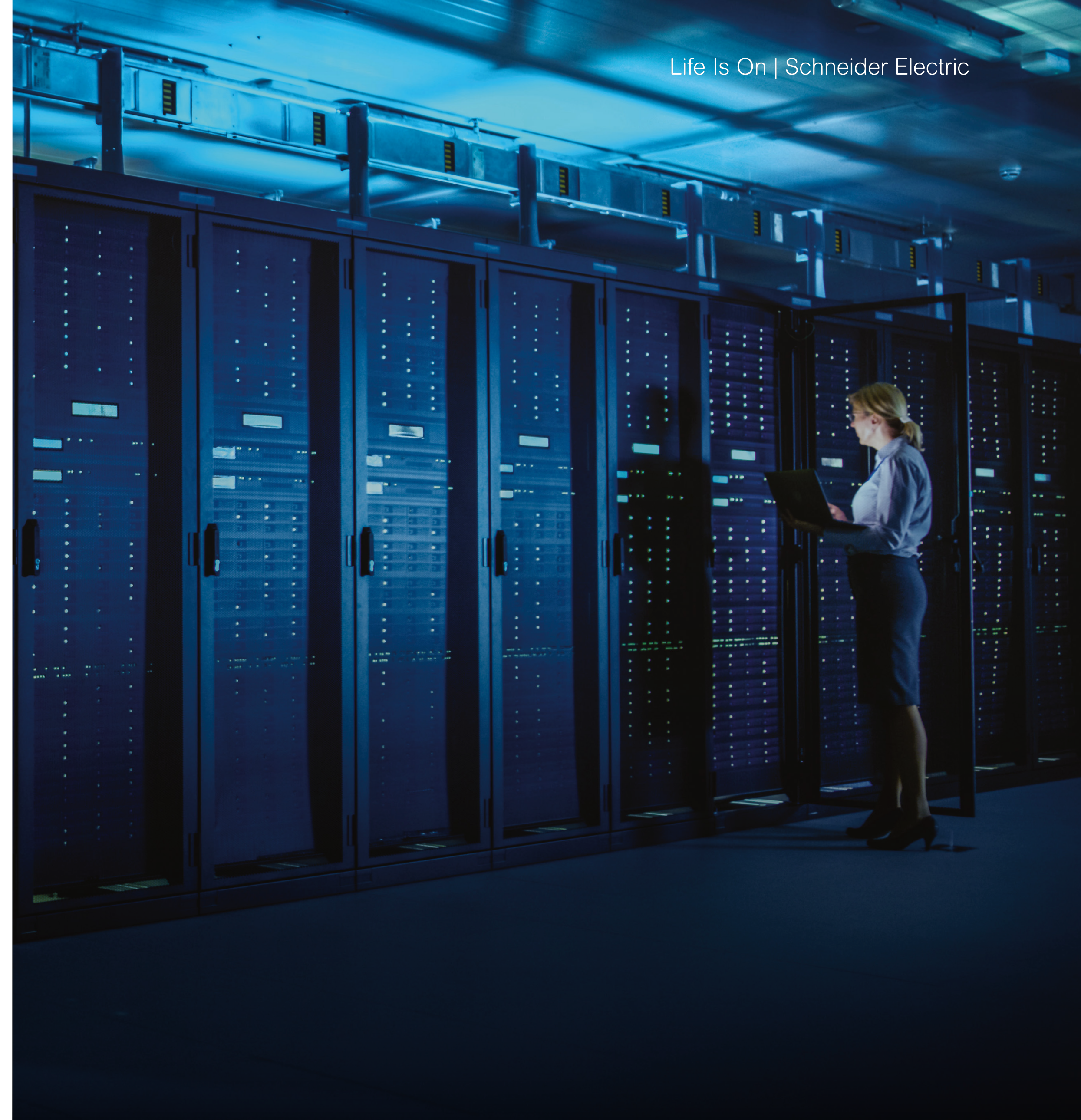


# Full Lifecycle Expertise

As you consider a data center's lifecycle, you have options. You can look for different companies that specialize in a particular phase — design, for example, or maintenance. Or you can partner with a company respected for its expertise in every phase: **Design, Build, and Operate and Maintain**. That's Schneider Electric.

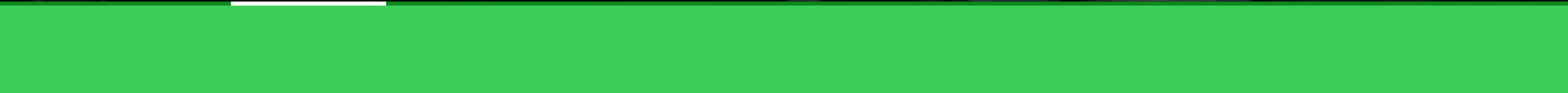
We're dedicated to creating energy-efficient, net-zero data centers — a commitment we're turning into a reality through connected products, software, and services. For example, many of our products adhere to our Green Premium standards, enforcing a commitment to compliance, transparency, and sustainability performance. A product with the Green Premium label sets a standard for responsible resource use, durability and reusability, and user health and safety.

From new builds to expansion to modernization, whatever your data center project is, we're here to help.





# Our Solutions





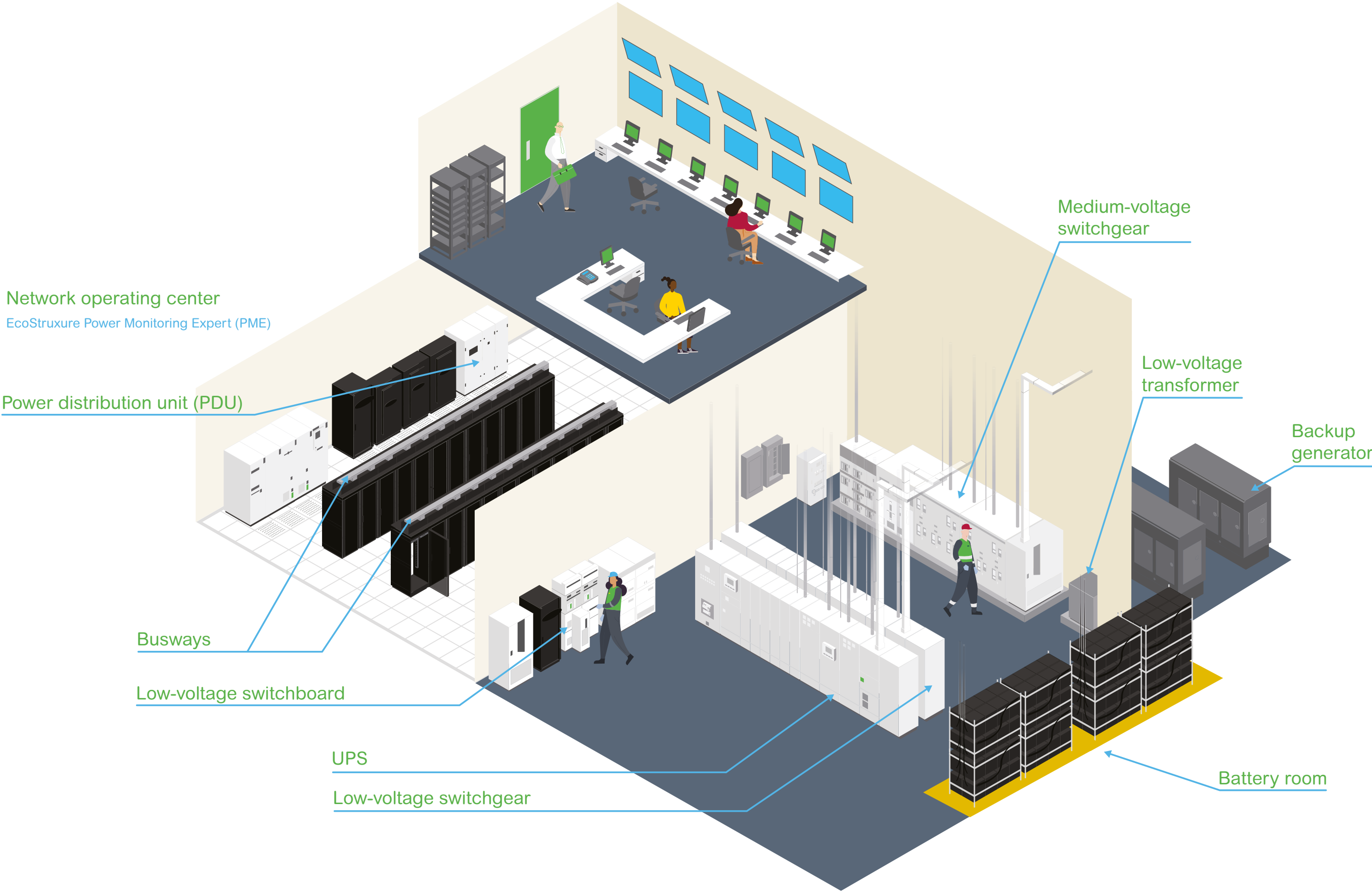
# Electrical Distribution

Keep the lights on and the data moving.

Data centers need reliable power. And today's electrical distribution also needs to be compliant with regulations and standards to reduce risk. It has to protect assets and people. And, more than ever, it has to be efficient and sustainable.

Our solutions can help you achieve all of that, and through remote operations and maintenance, can also help limit the need for constant on-site oversight.

You'll find all that here.



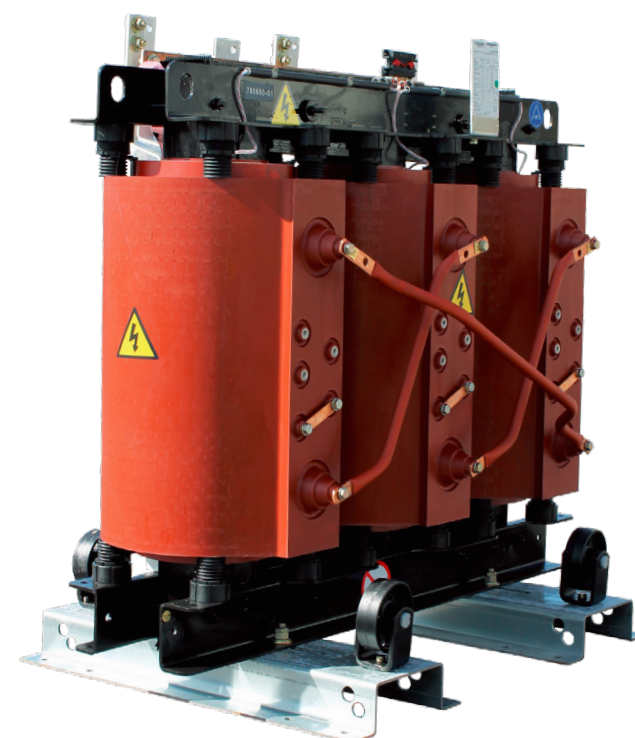




### Medium-voltage switchgear

Our medium-voltage switchgear is available in air, gas, or shielded solid insulated technologies, and our experts can make sure you're getting the right one for your project. For regions following IEC standards, the [AirSeT](#) family of SF<sub>6</sub>-free switchgear is suitable with all major power distribution applications in primary and secondary energy networks.

For regions following ANSI standards, our [Masterclad](#) and [PremSeT](#) switchgear offer proven protection in demanding, medium-voltage applications. Masterclad is an air-insulated system available from 1,200 – 4,000 A; PremSeT is another of our SF<sub>6</sub>-free offers and features the Solid Shielded Insulation System for enhanced safety.



### Transformers

Whether you need low- or medium-voltage power, you've got options for converting from utility to building distribution voltage, as well as converting distribution voltage to meet application requirements.

For low-voltage applications, select from single-phase, 3-phase, general purpose, and more. Medium-voltage offers include dry type, oil type, and vacuum pressure impregnated, along with units for dedicated applications such as rectifier or earthing transformers, smart grids, photovoltaic systems, and fire-resistant or explosive atmospheres.

[Learn more](#)





### Low-voltage switchgear and switchboards

Low-voltage [Okken](#) and [BlokSeT](#) switchboards help protect, control, and monitor power distribution systems. IEC-compliant and featuring native connectivity to IoT-enabled software such as [EcoStruxure™ Power](#), they also enhance reliability and efficiency. Choose from manufactured switchboards, panel building systems, including the [PrismaSeT](#) line, modular enclosures, and more.

For areas requiring ANSI compliance, we offer the [Square D™ QED](#) series and Power-Zone 4. QED low-voltage switchboards are built to last and provide safety throughout their entire lifespan. Choose from standard models up to 4,000 A or customize to your precise needs.

Power-Zone 4 is low-voltage drawout switchgear all featuring reliable [MasterPacT](#) circuit breakers.



### UPSs

Your facility needs to ensure reliable power under any conditions, and scalable power protection helps makes that possible. We offer a range of 3-phase UPS systems available with lithium-ion batteries for high availability, longer life, and reliability for data centers.

The [Galaxy UPS](#) range gives you proven, easy-to-deploy protection. With the ability to switch to the cost-saving eConversion mode, Galaxy UPSs provide ultra-high efficiency while batteries charge, conditioning the load power factor and ensuring Class 1 output voltage regulation.

The [Easy UPS](#) series is renowned for being easy to install, easy to use, and easy to service. It features a wide operating temperature window and strong overload protection, all in a compact, lightweight footprint.

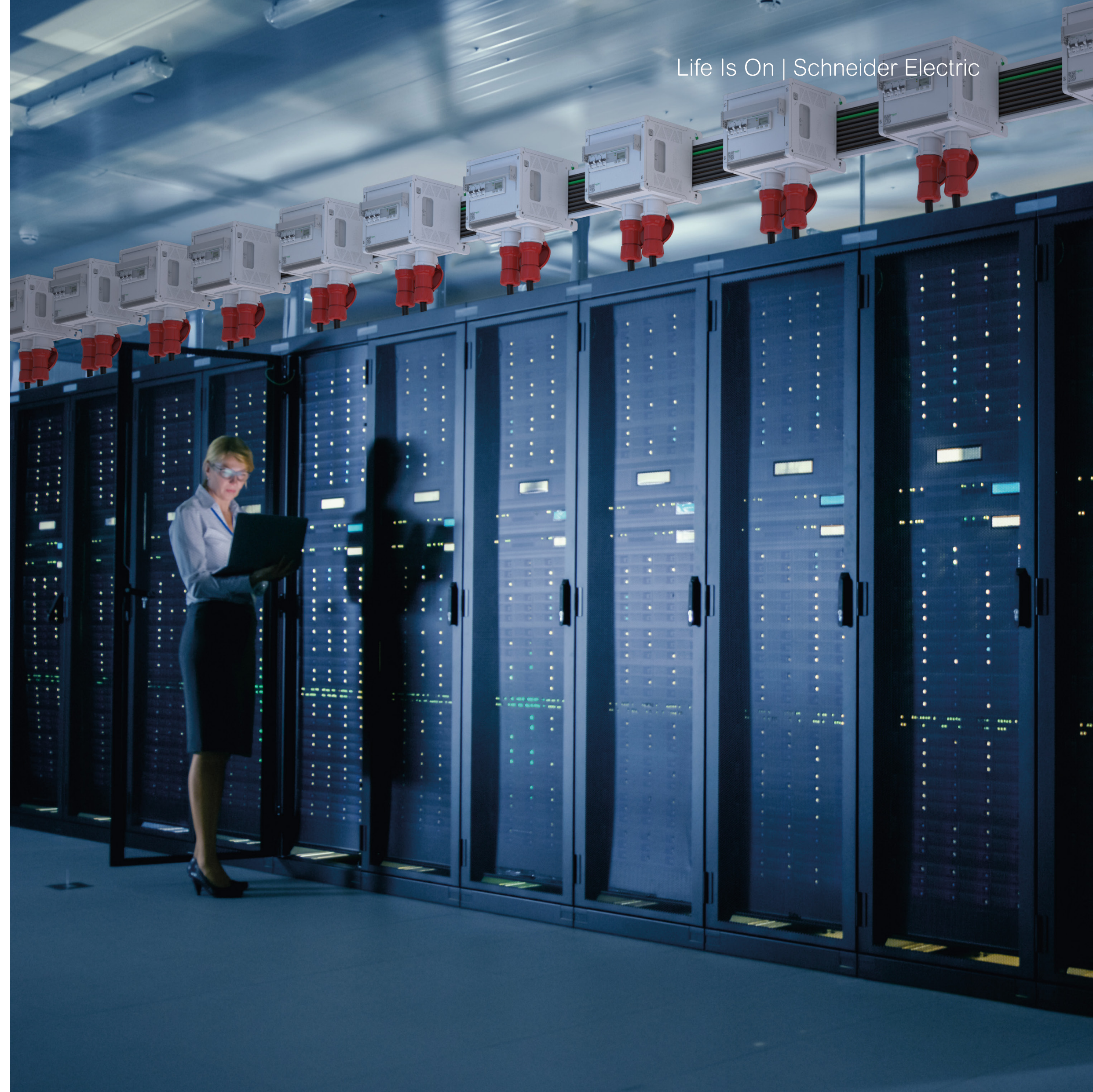




## Busway

For efficient distribution of low-voltage power in commercial or industrial applications, we offer a complete line of feeder and plug-in busway lengths and fittings. Available in a range of voltage and amperage ratings, they blend maximum flexibility with ease of installation.

[Learn more](#)



Life Is On | Schneider Electric

Electrical Distribution

Cooling

White Space Infrastructure

Prefabricated Modular Data Centers

On-site Energy Generation

Management Systems and Software

Sustainability

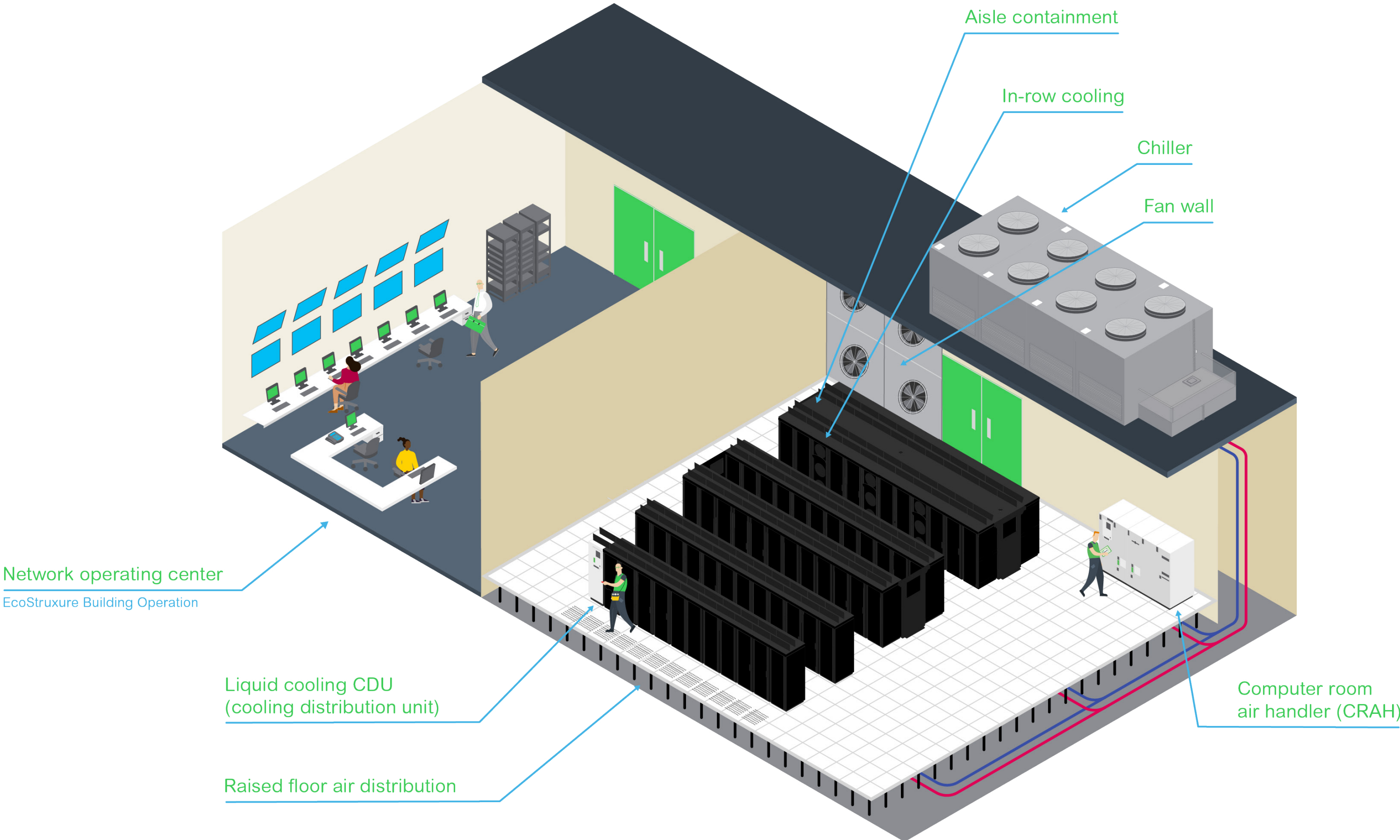
Services



# Cooling

Air, chilled water, liquid ... we'll help you choose.

As scale and performance demands for data centers increase, so does the need for efficient, sustainable cooling. Schneider's comprehensive selection provides multiple systems ready for new builds or retrofits and upgrades — along with fully customizable solutions for your unique needs.







### Chillers and heat rejection

Help protect sensitive IT equipment from overheating with in-rack, in-row, and in-room options. Choose from ducted or external options, and select by the certifications and standards your project needs.

[Learn more](#)



### Room air conditioners and air handlers

[Uniflair™](#) cooling options come in a variety of models to suit your specific requirements. We offer wall-, ceiling-, or rack-mounted systems, split and integrated free-cooling units, and perimeter cooling for small, medium, and large rooms.

[Learn more](#)





### Close-coupled air conditioners

Uniflair in-row cooling offers air, chilled water, or glycol-based options for efficient cold air delivery and hot air return. Available for medium to large data centers as well as closets and server rooms. Select by certifications and standards to match your project requirements.

[Learn more](#)



### Hot aisle containment and air distribution

NetShelter air containment system components maximize cooling predictability, capacity, and efficiency at the rack, row, or room level to help protect IT equipment and personnel. Active Flow Control sensors communicate with the system to adapt the cooling airflow to match the IT load consistently.

[Learn more](#)



### Liquid cooling

Offering higher energy efficiency, a smaller footprint, and enhanced reliability, liquid cooling is gaining favor as a choice for resilient data centers. These quiet, modular solutions can accommodate increasing heat loads from the latest processors while allowing for twice the IT capacity of equivalent air-cooled modular solutions.

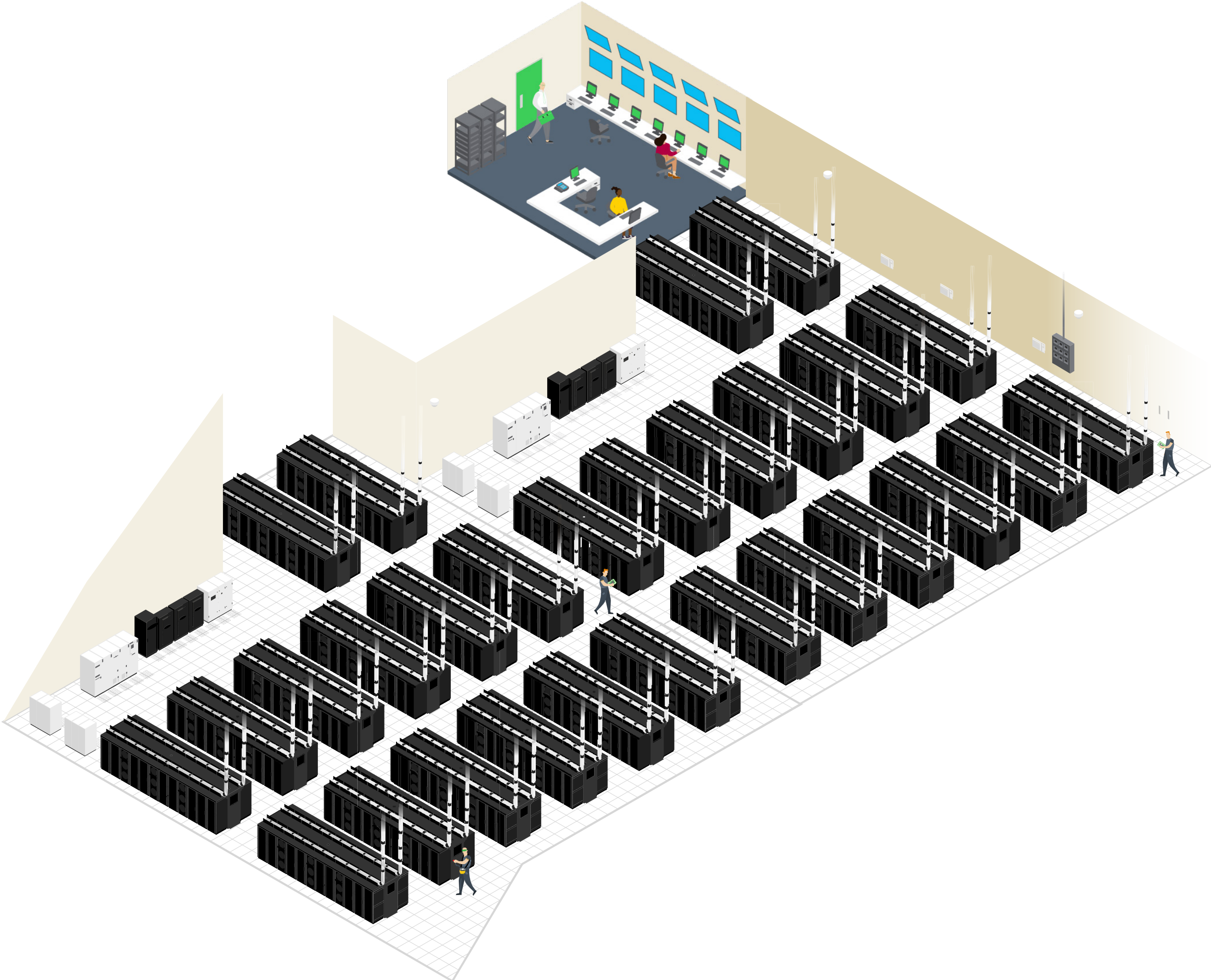
[Learn more](#)



# White space infrastructure

It's more than space for equipment — it's room to grow.

Optimize white space and the performance of the equipment in it with efficient, reliable solutions and software. Schneider's broad portfolio of integrated systems maximize your space and time, helping you and your clients put white space to the best possible use.





## Racks

Find exactly what you need, from full aisles to individual racks, along with enclosure accessories like shelving and cable management. Pick from standard racks for normal applications or ruggedized versions for harsh or industrial environments. And for those situations where one size doesn't fit all, our custom rack systems help you pull together the specific solution you or your client require.

[Learn more](#)

## EcoStruxure™ Pod Data Center:

Free-standing, rack-ready systems for rapid deployment. Each unit adapts to your cooling, containment, and power distribution needs. Support necessary IT infrastructure while providing air containment to easily roll racks in and out.

[Learn more](#)







### Rack-mount transfer switches:

Keep power flowing smoothly with industry-leading transfer time and improved outlet connections for power switching without interrupting critical loads.

[Learn more](#)



### Power distribution units:

Your PDU requirements are fully covered, with in-rack, in-row, and in-room options from our APC [NetShelter™](#) and [Easy](#) series. Provide enhanced power availability with power metering and control options as well as environmental monitoring.



### APC NetBotz™ rack access:

A fully integrated, scalable rack management solution designed to protect your IT infrastructure. Safeguard assets against environmental threats such as temperature, humidity, smoke, and water leaks while managing and controlling access privileges from a single, easy-to-use interface.

[Learn more](#)

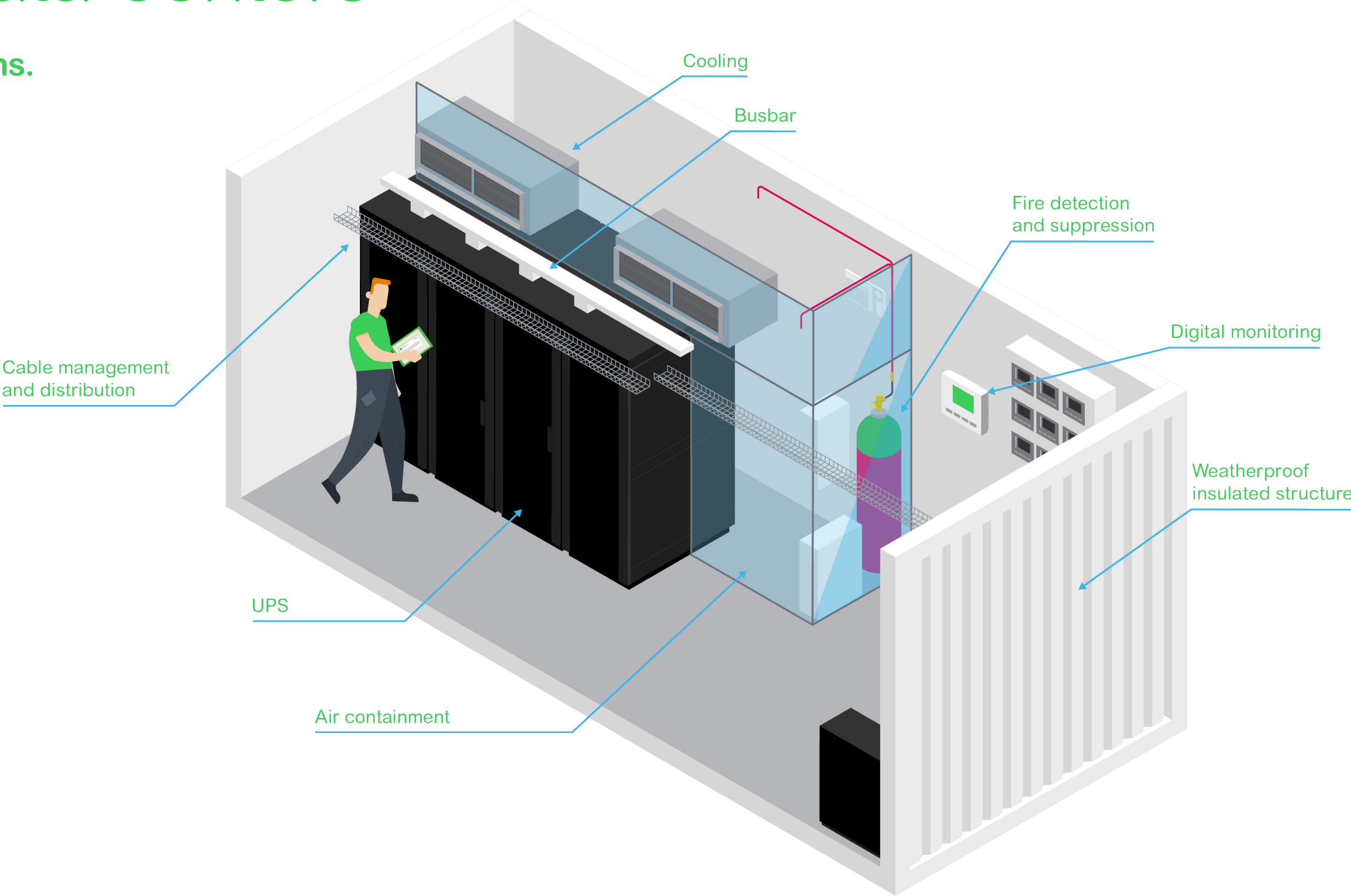




# Prefabricated modular data centers

Save time, money, and space with customizable solutions.

When a full build is neither practical nor necessary but you're still facing a tight timeline, a prefabricated data center can be the perfect answer. Select from IT modules or power modules to fit your needs.







### IT modules

Available in a range of sizes and configurations, these systems are designed for easy deployment. From a single module to a full data hall or room, each self-contained unit includes white space, power, and cooling.

[Learn more](#)



### Power modules

Optimized for easy scalability, our power modules significantly reduce the time and complexity of deploying critical data center power. Available with integrated UPS, switchgear, and management software.

[Learn more](#)



### Power skids

Scalable and flexible, our prefabricated power skids allow for larger power ranges in a small footprint. They arrive on site ready to be installed, saving you time and money.

[Learn more](#)



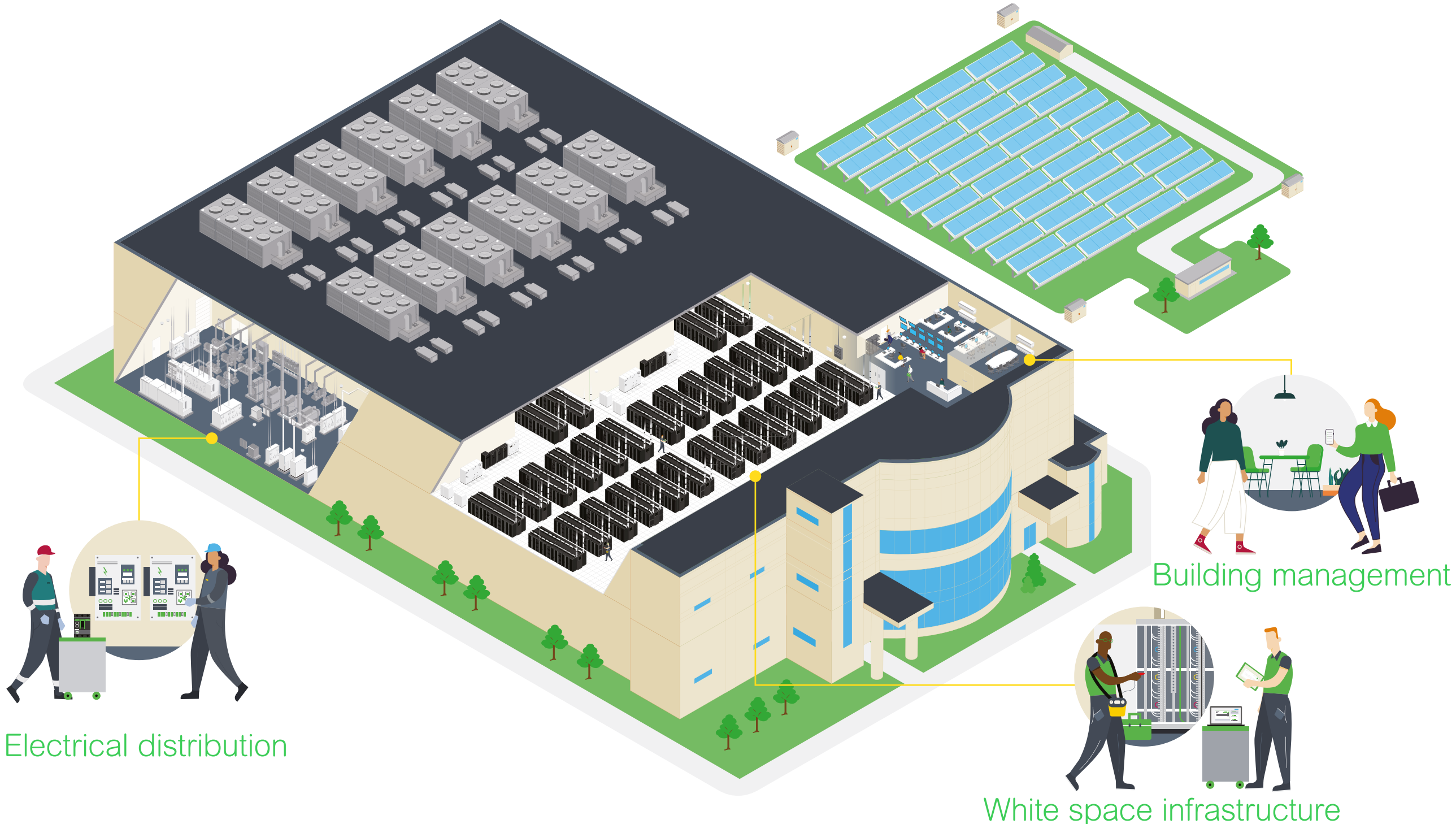
# On-site energy generation and storage

Microgrids and renewables help improve resiliency.

Threats to energy reliability are growing, from aging infrastructure to increasingly severe weather events. Data center operators are turning to on-site energy solutions like microgrids to protect their operations from these external forces, and from the cost fluctuations that often accompany them. We're at the forefront of the microgrid movement, working with data center customers on their strategies through innovative solutions such as [EcoStruxure Microgrid Advisor](#) software. By providing dynamic control of distributed energy resources, Microgrid Advisor helps to leverage on-site generation for cost optimization, sustainability, and resilience.

[AlphaStruxure](#) makes microgrids more accessible by eliminating upfront expense, shifting the cost from CapEx to OpEx. Through an Energy as a Service model, AlphaStruxure can finance, design, build, own, operate, and maintain a microgrid designed specifically for your data center or your client's.

[Learn more](#)





# Management systems and software

Give yourself a digital edge.

Digital innovation helps eliminate waste and drive efficiency while providing you with a competitive advantage. Combining digital metering and monitoring systems with smart devices, apps, analytics, and software brings your operation into the world of [Electricity 4.0](#), enabling smarter, sustainability-minded energy deployment.



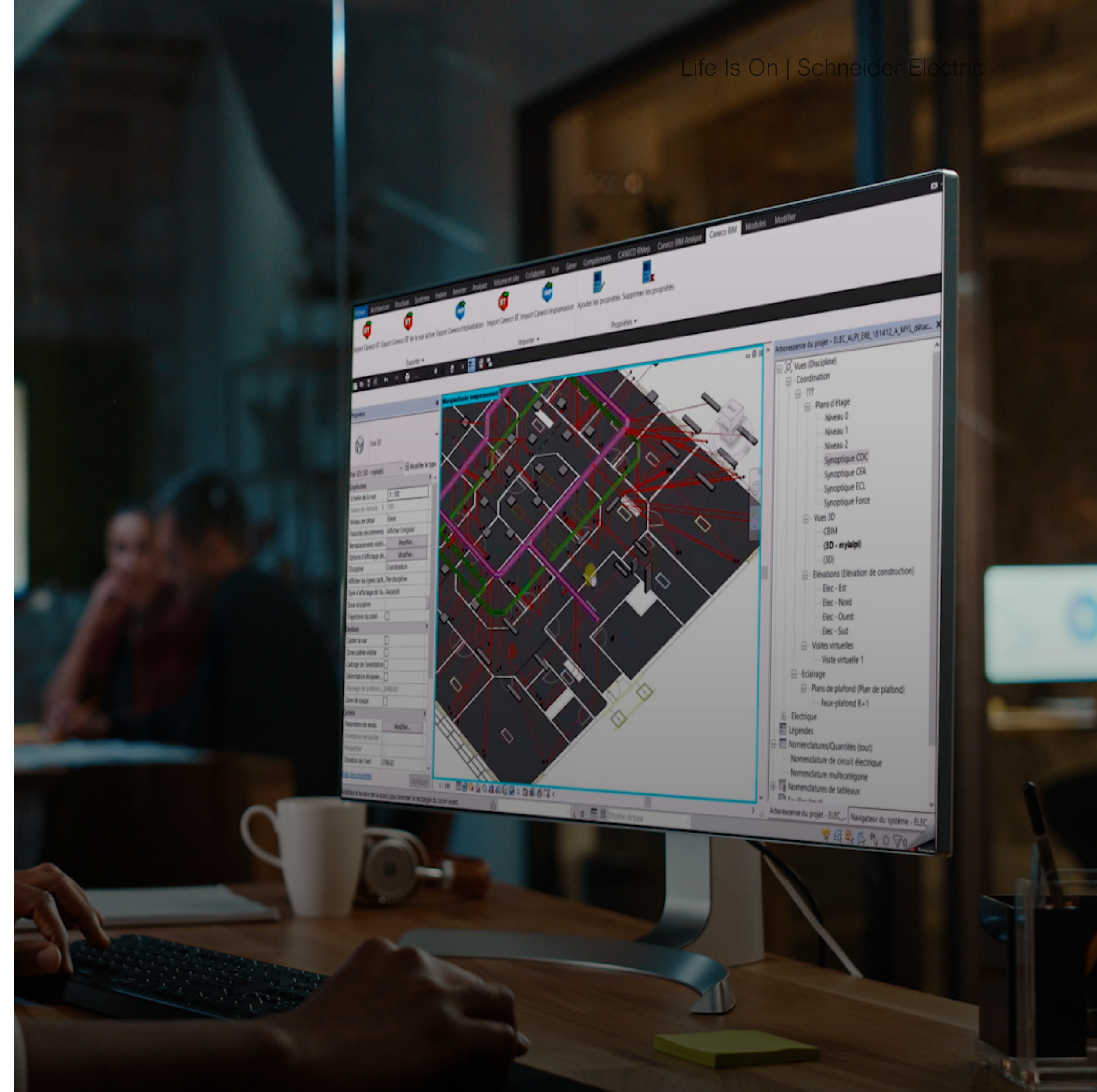




## Design

Ready to design power systems more easily and efficiently? ETAP® is an analytical engineering software solution to aid in the simulation, design, monitoring, control, operator training, optimizing, and automating of power systems. ETAP's integrated digital twin platform offers a comprehensive suite of enterprise solutions for creating an active blueprint of the power system — providing you with design and operational insights, advanced power system analytics, and root-cause identification of operating issues.

[Learn more](#)



Electrical Distribution

Cooling

White Space Infrastructure

Prefabricated Modular Data Centers

On-site Energy Generation

**Management Systems and Software**

Sustainability

Services



### Five ways RIB solutions support operations

#### Build

The build phase often involves people in various functional areas, all of whom need insight into the project. RIB software solutions bring unprecedented end-to-end visibility to a part of the process that has historically lacked this support. By connecting people, processes, and data across the lifecycle in one centralized system for efficient collaboration, these solutions empower faster, more informed decisions and cost savings.

[Learn more](#)

#### SpecLink

for managing specifications



#### Digital Handover

for seamless handover to operations

#### Connex

for proactive commissioning

#### CostX

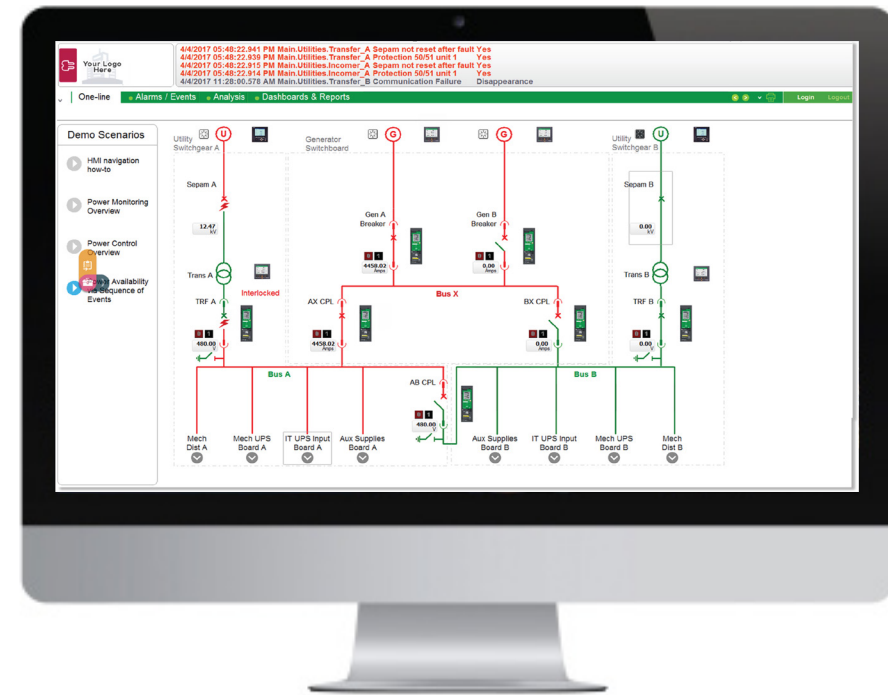
for efficient estimating, including embodied carbon trade-offs

#### RIB Project

for structured documentation management



## Operate and maintain



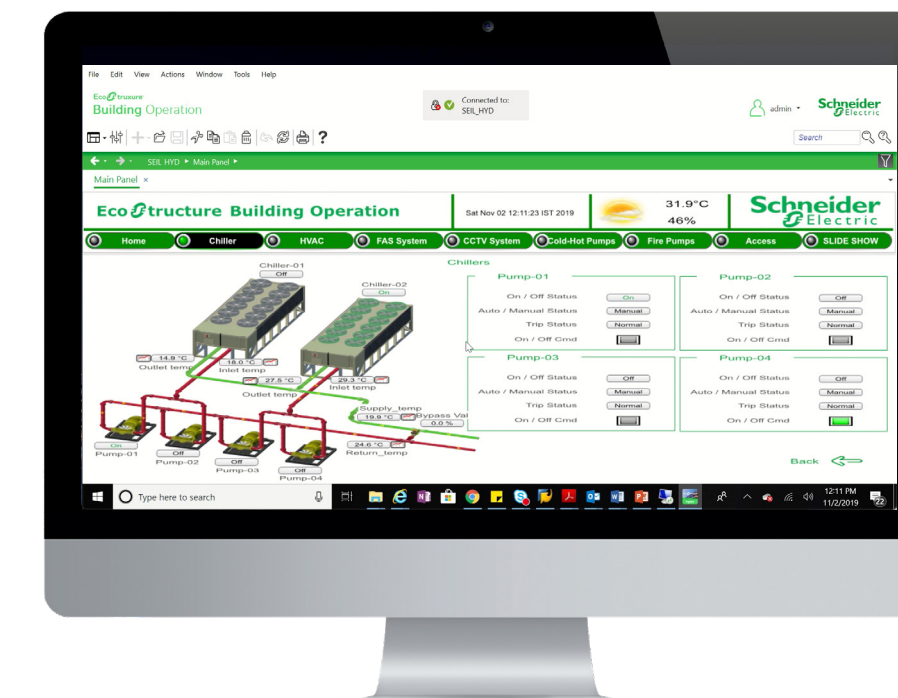
**EcoStruxure Power Operation** is an advanced, cybersecure power management software platform leveraging ETAP's digital twin foundation. Using real-time predictive simulation, it helps improve power availability and increase efficiency. And with open connectivity at its core, it interacts seamlessly with other EcoStruxure offers and third-party products and systems.

[Learn more](#)



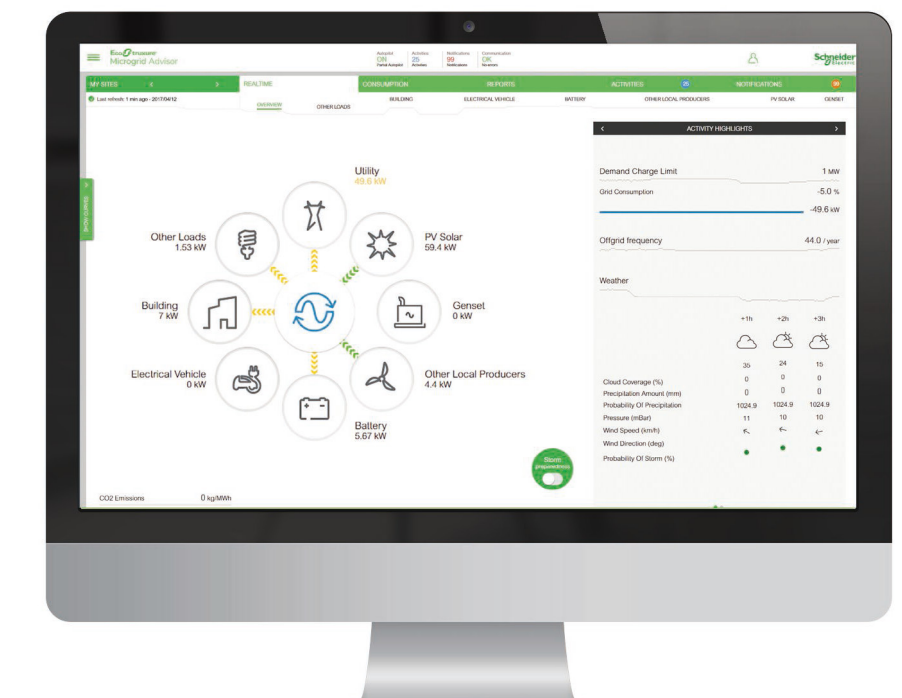
**EcoStruxure Power Monitoring Expert** gives you insight into electrical system health and energy efficiency, helping you make informed decisions to improve performance. Convert data into action with advanced visualization and analysis tools.

[Learn more](#)



**EcoStruxure Building Operation** integrates multiple systems in real time to deliver actionable insights for managing and optimizing your facility while improving efficiency and improving and cybersecurity. Like all EcoStruxure software, Building Operation is natively compatible with open protocols.

[Learn more](#)



**EcoStruxure Microgrid Advisor** is cloud-based software that helps you connect, monitor, and control your center's distributed energy resources. Microgrid Advisor creates deeper visibility into solar power, lighting, AC, combined heat and power, and more, all gathered in a single source.

[Learn more](#)



### Direct digital controls

Our software offers are designed to work with a range of SpaceLogic™ digital controllers, including the AS-P, AS-B, MP and RP series. Through EcoStruxure Building Operation and Power Monitoring Expert, these controllers give full visibility into HVAC, lighting, temperature, humidity, security, and more.

[Learn more](#)

### Programmable logic controllers

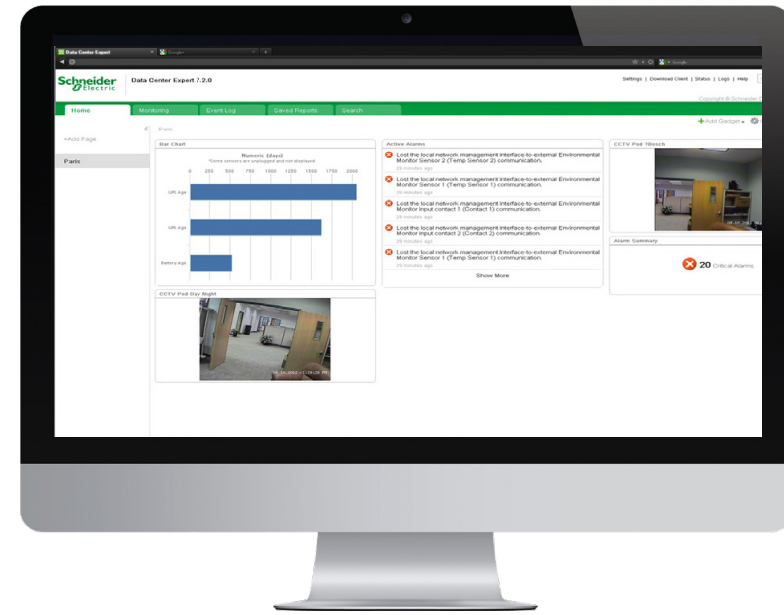
Behind EcoStruxure Power Operation and Building Operation are programmable logic controllers from trusted names like Zelio Logic and Modicon. Available with 40 – 2,400 I/Os, these devices control and monitor operations with edge technology, augmented with Ethernet connectivity and built-in cybersecurity.

[Learn more](#)





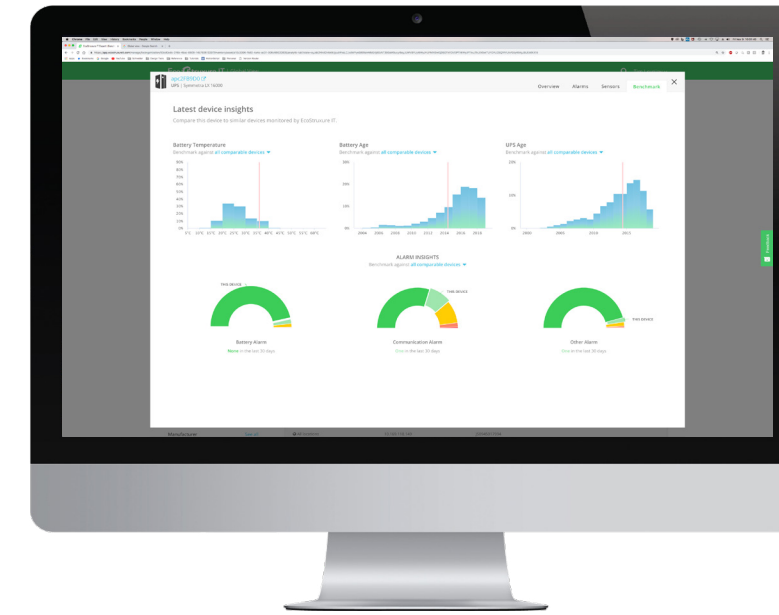
## Data Center Infrastructure Management software



### Data Center Expert

is a scalable monitoring software that collects, organizes, and distributes critical device information for a comprehensive view of your equipment.

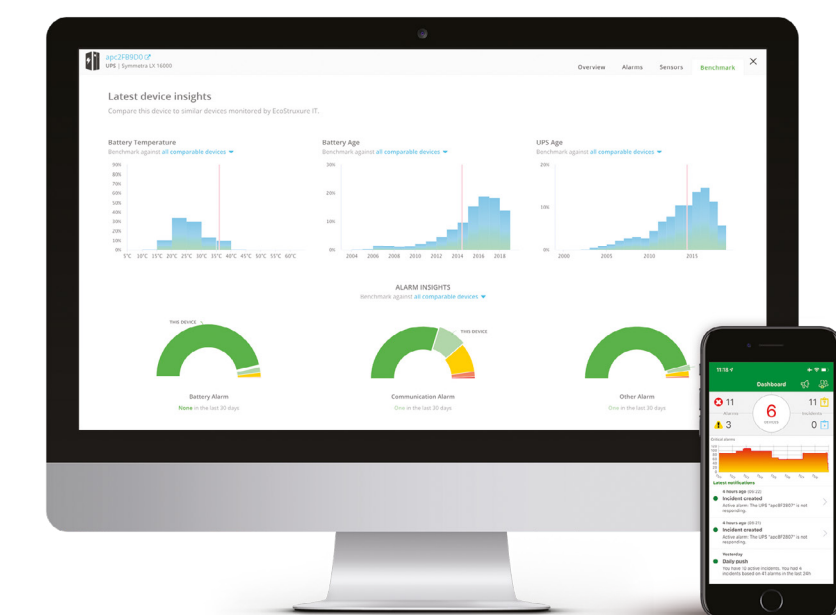
[Learn more](#)



### IT Expert

helps you proactively monitor and manage your IT equipment from anywhere with predictive management and data-driven recommendations to mitigate risks.

[Learn more](#)



### IT Advisor

is the industry's first cloud-based data center infrastructure management solution, helping you reduce OpEx and improve uptime through analytics to enhance capacity planning.

[Learn more](#)



### AVEVA Software

Bring end-to-end operational visibility to your facility to ensure uptime, reduce costs, and manage complexity with AVEVA Unified Operations Center for Data Centers. AVEVA creates a centralized view of your operations, helping you make more informed decisions in real time. Gather data from all your critical systems, from electrical and mechanical to fire, safety, environmental, and more.

[Learn more](#)





### Cybersecurity

With cyber-based incidents on the rise, cybersecurity is a critical consideration. Our best-in-class solutions offer a full range of assessment, planning, policy management, and defense methodologies to counter threats and extend protection. We can design and implement a flexible, customized program to meet your specific needs, based around four categories: Permit, Protect, Detect, and Respond. We also offer monitoring, maintenance, and training services.

[Learn more](#)

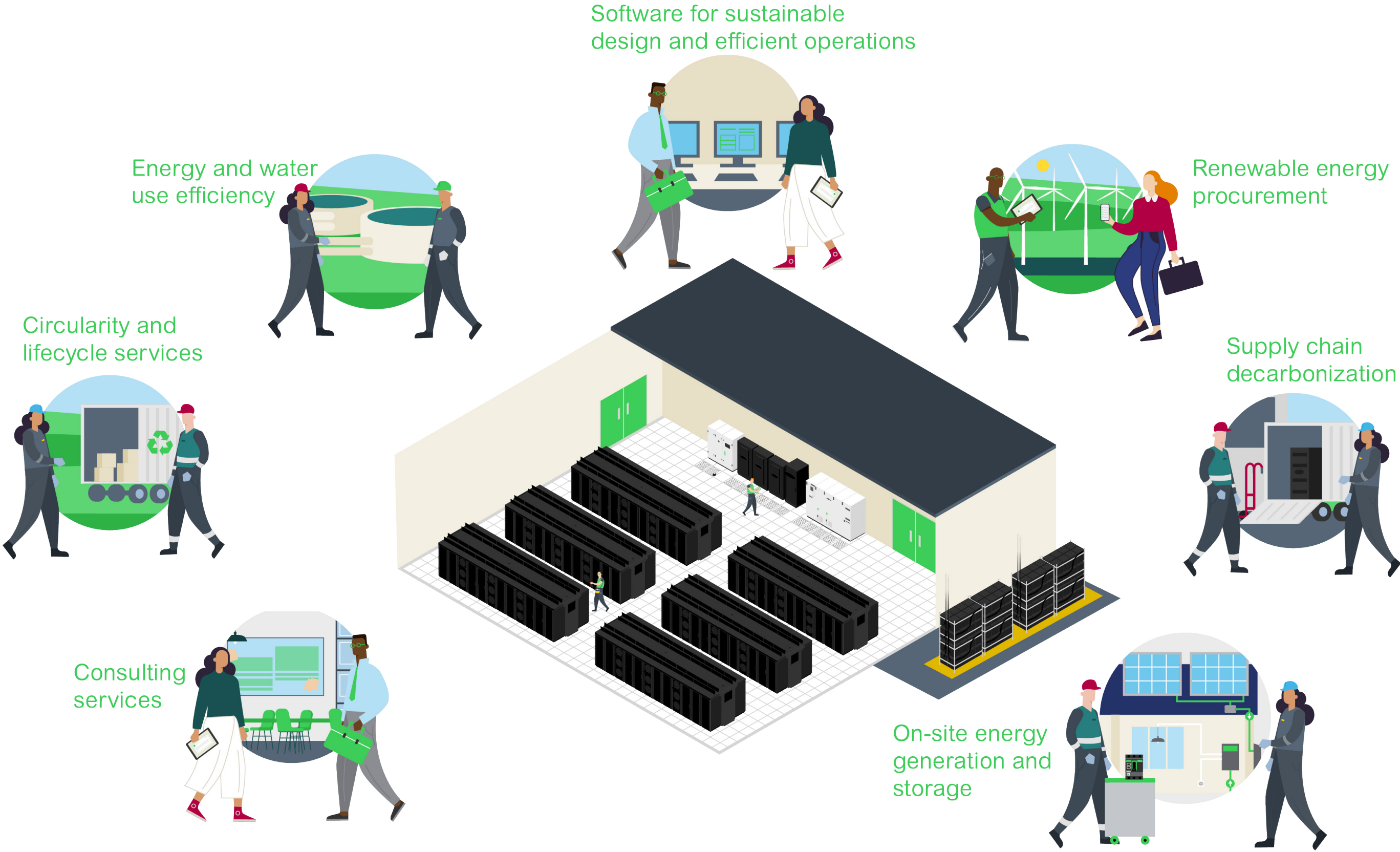




# Sustainability

**Not a buzzword — a business necessity.**

Improving sustainability has become a top priority for data center operators. And that means more than just keeping track of your carbon footprint. It's about reducing greenhouse gas emissions, managing energy use, controlling water and wastewater, and protecting biodiversity. Navigating all this along with changing regulations and growing customer demand for more sustainable operations can be difficult. With more than 15 years of expertise, Schneider Electric can help you on your sustainability journey. Our services cover areas such as supply chain decarbonization, traditional and renewable energy procurement, climate change and risk strategies and solutions, and much more. We're here to help whether you're just starting out or looking to adapt and stay ahead of the competition.





We approach your sustainability journey in five steps, guiding you to:

1. Set a bold, actionable strategy
2. Implement sustainable designs
3. Drive sustainability in operations
4. Buy renewable energy
5. Decarbonize your supply chains

Every sustainability solution and service we offer is designed with these five steps front-of-mind.

[Watch the video](#)





## Consulting

We believe that real sustainability is a group effort. Let our experience as a sustainability advisor to 40% of all Fortune 500 companies help you custom-craft a comprehensive strategy and set targets that fit your specific needs. From managing metrics and tracking progress to investing in renewables and reducing your facility's carbon impact, our experts are there for you from day one.

A key element in this partnership is the information and insight you gain with [EcoStruxure Resource Advisor](#). By visualizing your energy, ESG, and sustainability data in one place while managing complex information and unifying teams, Resource Advisor helps you adjust your sustainability strategy based on your performance against objectives.

[Learn more](#)

Resource Advisor has helped manage

128.3M  
metric tons of CO<sub>2</sub>

70 GW  
of energy

in 160+  
countries





### Scope 3 expertise

One major challenge in creating a sustainability journey is how to manage Scope 3 carbon emissions — those that are not directly in your control, such as emissions caused by other companies in your supply chain, employee commutes, waste, end-of-life procedures for products, and more.

As a leader in supply chain decarbonization with a proven track record in reducing Scope 3 emissions, we can show you how to reduce your total impact through analytics, ambition, and action. And it's not just talk — we've set ourselves an ambitious goal to reduce the emissions from our top 1,000 suppliers by 50% by 2025, and we're using our decarbonization services to make it happen. We can use our own success to drive yours.

[Watch the video](#)

### Circularity

As a partner in your supply chain, we recognize that our sustainability efforts impact yours. All our products, services, and software are created in keeping with the “EcoDesign Way” — a dedication to reducing materials use, increasing performance, and improving the circularity of our products.

[Learn more](#)





### Renewable energy procurement

No one should have to navigate their way through complex renewable energy markets alone. Schneider has been ranked #1 among Power Purchase Agreement Marketplace Solution Providers by Guidehouse Insights. Since 2014, we've advised on more than 14 GW of renewable energy PPAs.

Together we can work out a plan to help you understand and obtain energy attribute certificates, choose between onsite or offsite renewable energy projects, or look into PPAs or tax equity financing with no CapEx for large-scale projects. There's no need to go it alone.

[Learn more](#)



# Services

A team of experts is always ready to help.

We recognize the challenges you face every day. One way we help lighten that load is through expert services. Whether you're looking to increase operational efficiency, enhance safety, ensure reliability, or improve sustainability, there's a service offering that's exactly right for you.

With more than 15,000 experts in 90 countries, there's a good chance that we're not far away. (And in these days of digital communication, we're even closer!)

Our services get results

8.5M  
connected  
customer assets

Used on  
50,000  
sites

Up to  
30%  
lower energy  
consumption\*

\*Based on previous data, 2021. This is not a guarantee of future performance or performance in your particular circumstances.





### Installation and commissioning

When you're ready to roll out, we can be there to make sure everything goes smoothly and on time. Our consultants will ensure your power and IT equipment is properly installed to manufacturer specs to give you optimal performance with reduced risk of failure.

[Learn more](#)

### Training

Data centers are constantly evolving, and your personnel need to keep pace with the changes to increase operational efficiency and safety — and to stay competitive. Expert training is always available on an array of topics and can be conducted either on-site, virtually, or immersively through VR. Get the right knowledge at the right time, customized to your unique business needs.

[Learn more](#)







### EcoStruxure Service Plans

Our tailored service offerings combine our deep expertise in remote consultancy with on-site and dynamic maintenance. With the power of our EcoStruxure platform, we can oversee your systems and work with you to help mitigate electrical failure risk, minimize operating costs, lower unplanned downtime, and extend asset life.

[Learn more](#)

### Spare Parts

Asset lifecycle management includes planning for needing spare parts. We maintain a full parts inventory, complete with comprehensive installation information, to help limit downtime. With 24/7 availability, we can recommend what to stock onsite and what can be stored at Schneider facilities until you need it. We also assist with UPS battery management, replacement, and upgrades to Li-ion.

[Learn more](#)



Our services bring you the best of both worlds: the reliability of remote digital monitoring and the assurance of in-person, on-site expertise.

### Field services

While remote monitoring is changing the way you oversee your systems, some issues require hands-on assistance. Performed by qualified personnel, our on-demand services can keep you ahead of potential problems through preventive maintenance or get you back up and running through corrective maintenance. Help ensure uptime, reduce risks, and optimize safety and operations across systems.

[Learn more](#)

### Remote and digital monitoring

In a digital world, you can have access to 24/7, real-time, expert monitoring of data center systems. Used as either a primary or secondary means of overseeing a facility, it brings you trend analysis, alarm notifications, proactive service response, and a team of professionals ready to spot potential warning signs and trigger appropriate responses.

[Learn more](#)

### Field services include

- Battery, fan, and capacitor replacements
- Refrigerant leak checks
- Air filter cleaning or replacement
- ... and more





### Modernization

Is your data center as up-to-date as you'd like it to be? Is it in keeping with your efficiency and sustainability goals? With modernization services, you can get a full assessment of your facilities, with suggestions as to what equipment may be getting old or becoming obsolete. From individual systems such as UPS and cooling to power distribution units, LV and MV transformers and switchgear, our expert team can help improve data center performance and enable future-ready scalability while controlling costs.

[Learn more](#)



### Lifecycle consulting services

The needs of a data center change dynamically across its lifecycle. As time goes along, there's an increasing focus on optimizing operations, driving efficiency gains, and determining how best to extend the life of the data center — and we can be there to help. With proven methodologies, remote monitoring, and on-site personnel, our consulting services help ensure that your data center or your client's, regardless of size, operates at peak efficiency from the start.

[Learn more](#)







**Our power system experts:**

- Optimize power through preconfigured architectures
- Reduce engineering and speed deployments with customer standard designs
- Offer advanced expertise from design to commissioning

### Cybersecurity consulting

Data breaches and other cybersecurity incidents continue to rise as the world becomes connected. Our global team of experts is ready to help you provide top-tier cybersecurity to your clients. From consulting, design, and implementation to monitoring, maintenance, and training, our services give you access to a flexible, comprehensive array of programs designed to keep facilities, data, and reputations secure.

[Learn more](#)

### Power systems consulting

Bring advanced engineering support to your data center's power system. Our experts take a holistic view of technical support — and there's never any compromise on safety, availability, or sustainability.

[Learn more](#)



A man in a grey sweater and dark pants stands in a server room aisle, holding a tablet and pointing at a server rack. The room is dimly lit with blue ambient lighting. The text "The Future Starts Now" is overlaid in white in the center of the image.

The Future Starts Now



# Let's get started

You've got a data center to run — and the less there is for you to worry about, the better. From reliable, efficient products to expert advice to on-demand and 24/7 services, Schneider Electric can tailor a unique solution to ensure that your data center infrastructure is efficient and sustainable.

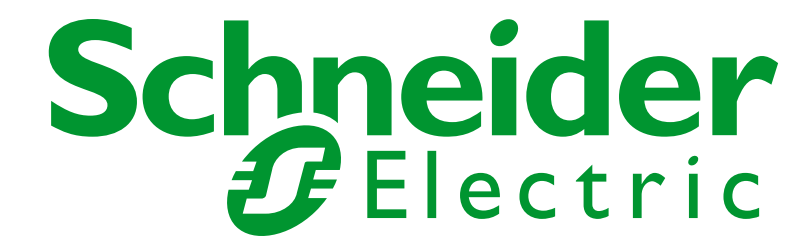
Let's talk today about how Schneider Electric can help you take the next steps to data center success.

[Learn more](#)





Life Is On



To learn more about  
Schneider Electric **data center solutions**, visit

[se.com/dcotf](https://se.com/dcotf)



### Schneider Electric

35 rue Joseph Monier  
92500 Rueil-Malmaison, France  
Tel : +33 (0)1 41 29 70 00

