



Deploy in harsh environments with a reliable ruggedized solution.

EcoStruxure™  
Micro Data Center  
R-Series



[se.com](http://se.com)

Life Is On

**Schneider**  
Electric

# R-Series High Density NEMA 4/4X

REGION AVAILABLE: **NAM**

## Configurable solution.

Select the right enclosure with cooling and plinth options to deploy in harsh environments. Additional options available include UPS, PDU, lighting, monitoring, and more for an all-in-one solution at the edge.

Configure now at [se.com/myschneider](https://se.com/myschneider)



EcoStruxure Micro Data Center R-Series NEMA 4						
	Single Bay		Dual Bay		Triple Bay	
Enclosure	AR5333	AR5342	AR5333-2B	AR5342-2B	AR5333-3B	AR5342-3B
Height (in)	64.625	81.125	64.625	81.125	64.625	81.125
Width (in)	30 x 42	30	60	60	90	90
Depth (in)	42	42	42	42	42	42
Rack Space	33 RU	42 RU	66 RU	84 RU	99 RU	126 RU
Equipment Load	2000 lb		4000 lb		6000 lb	

Door/Side Mounted Cooler with Reheat	
ACSC5041	2k Btu/hr (0.4kW) 115 Volt, NEMA 4X
ACSC5042	2k Btu/hr (0.4kW) 230 Volt, NEMA 4
ACSC5141	4k Btu/hr (1.4kW) 115 Volt, NEMA 4
ACSC5142	4k Btu/hr (1.4kW) 230 Volt, NEMA 4
ACSC5231	8k Btu/hr (2.3kW) 115 Volt, NEMA 4
ACSC5232	8k Btu/hr (2.3kW) 230 Volt, NEMA 4
ACSC5351	12k Btu/hr (3.5kW) 115 Volt, NEMA 4
ACSC5352	12k Btu/hr (3.5kW) 230 Volt, NEMA 4
ACSC5592	20k Btu/hr (5.9kW) 230 Volt, NEMA 4
ACSC5354DC	12k Btu/hr (3.5kW) 48VDC Volt, NEMA 4

Plinth	
ARPB506	Single Bay 6" Plinth
ARPB512	Single Bay 12" Plinth
ARPB506-2B	Double Bay 6" Plinth
ARPB512-2B	Double Bay 12" Plinth
ARPB506-3B	Triple Bay 6" Plinth
ARPB512-3B	Triple Bay 12" Plinth



Additions to Configure Complete Solution through Local Edge Configurator (LEC)					
Power	UPS	Monitoring	Security	Startup	Additions
Horizontal and vertical PDU from basic to metered by outlet.	VRLA to Lithium-Ion UPS options in varying capacities.	EcoStruxure IT for remote monitoring and management	NetBotz available for door contacts, environmental sensors, keylock, and more.	Field installation for Schneider Electric and APC equipment.	Extended warranty, cable management, fire suppression, and more.



# R-Series Medium Density IP54

REGION AVAILABLE: **EUROPE**

## Configurable solution.

Select the right enclosure with cooling and plinth options to deploy in harsh environments. Additional options available include UPS, PDU, lighting, monitoring, and more for an all-in-one solution at the edge.

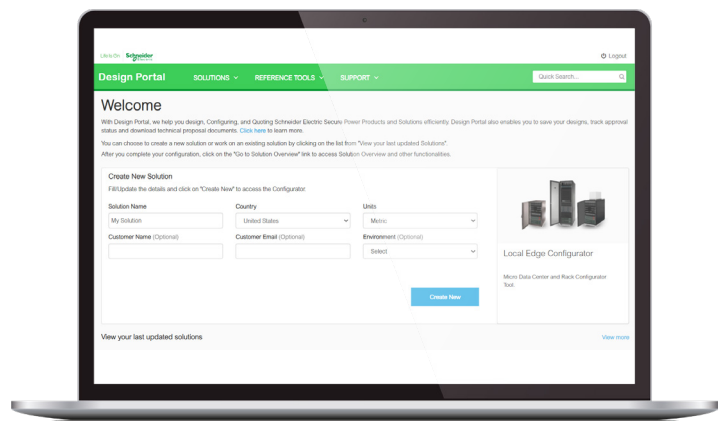
Configure now at [se.com/myschneider](http://se.com/myschneider)



	42U Medium Density	42U Medium Density (w/fan)
Enclosure Part Number	AR5340	AR5340F
H x W x D (mm)	2000 x 800 x 1200	
Static Load	1361 kg	
Total Rack U Space	42U	
Avail. Rack U Space	Configuration dependent	
Emergency Fan	No	Yes - 3kW
IP Rating	IP54	
Base	Casters with levelling feet	

## Local Edge Configurator (LEC)

Access the configuration tool to help design computing solutions and select the right physical infrastructure, management, services and security for the application.



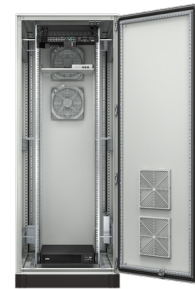
# R-Series Low Density NEMA 12 / IP54

REGION AVAILABLE: **NAM**

## Configurable solution.

Select the right enclosure with cooling and plinth options to deploy in harsh environments. Additional options available include UPS, PDU, lighting, monitoring, and more for an all-in-one solution at the edge.

Configure now at [se.com/myschneider](https://se.com/myschneider)



	16U Wall-Mounted	24U Low Density	42U Low Density	42U Low Density
	Base Enclosure (add ventilation to complete solution)			
H x W x D (mm)	800 x 600 x 400	1300 x 600 x 800	2100 x 600 x 800 2100 x 600 x 1000	2100 x 800 x 1000 2100 x 800 x 1200
Static Load	48kg	240kg	400kg	400kg
Total Rack U Space	16U	24U	42U	42U
Avail. Rack U Space	Configuration dependent			
IP Rating	NEMA 12 / IP54 (with ventilation)*			
Base	N/A		Plinth	

\*ventilation system not included in base enclosure



	Additions to Configure Complete Solution through Local Edge Configurator (LEC)			
<b>Power</b>				
Maximum IT Load	500W	2kW	2kW	2kW
UPS Capacity	500VA	1 - 3kVA	1 - 3kVA	1 - 3kVA
UPS Runtime	Configuration dependent			
Power input	120V /230V	120V /230V	120V /230V	120V /230V
<b>Cooling</b>				
Cooling capacity	≤0.5kW	≤2kW	≤2kW	≤2kW
Cooling Type	Fan Ventilated (fan system to be added to enclosure)			
<b>Security</b>				
Monitoring	Options available (Phone, App, Web)			
Environmental Sensing	Options available			
<b>Deployment</b>				
Pre-installed IT	No			
Assembly	Optional assembly of ventilation, power, and monitoring components			
Warranty	1 year warranty			

# R-Series Low Density IP54

REGION AVAILABLE: **INTERNATIONAL**

## Configurable solution.

Select the right enclosure with cooling and plinth options to deploy in harsh environments. Additional options available include UPS, PDU, lighting, monitoring, and more for an all-in-one solution at the edge.

Configure now at [se.com/myschneider](https://se.com/myschneider)



	15U 500W	24U 500W	24U 1kW	42U 2kW
Solution Part Number	MDC15UR500ACI	MDC24UR500ACI	MDC24UR1KACI	MDC42UR2KACI
Rack dimensions H x W x D (mm)	850 x 600 x 600	1300 x 800 x 1000	1300 x 800 x 1000	2100 x 800 x 1200
Solution dimensions H x W x D (mm)	850 x 850 x 600	1300 x 1060 x 1000	1300 x 1060 x 1000	2100 x 1130 x 1200
Static Load	500kg	1000kg	1000kg	1500kg
Dynamic Load	200kg	600kg	600kg	800kg
Total Rack U Space	13U	24U	24U	42U
IP Rating	IP54			
Power Input	230V 50Hz/60Hz - Power Distribution Panel			
Cooling Capacity (L35/L35)	500W	500W	1kW	2kW
Cooling Type	Self-Contained AC DX, EcoStruxure ITE enabled			
Noise Level	<65 dB			
Physical Security	Standard Mechanical Multi-point Lock			
Base	Plinth		Casters	
Cable Entry	Power and data cable glands			
Accessories	LED Light			
Deployment	Ships fully assembled with cooling and power distribution			
Warranty	1 year warranty, extend up to 3 years			

### Additions to Configure Complete Solution through Local Edge Configurator (LEC)

UPS	PDU	Security	Fire Suppression	Monitoring	Services
APC Smart-UPS, APC Easy UPS	NetShelter Basic, Metered, Switched Rack PDU	NetBotz 250, NetBotz 750 + Camera pod	2U Rack Fire Suppression Kit	EcoStruxure IT Expert	Warranty extension

# R-Series Low Density IP54

REGION AVAILABLE: **INDIA**

## Configurable solution.

Select the right enclosure with cooling and plinth options to deploy in harsh environments. Additional options available include UPS, PDU, lighting, monitoring, and more for an all-in-one solution at the edge.

Configure now at [se.com/myschneider](https://se.com/myschneider)



	15U 500W	24U 500W	24U 1kW	42U 2kW
Solution Part Number	MDC15UR500ACI-IN	MDC24UR500ACI-IN	MDC24UR1KACI-IN	MDC42UR2KACI-IN
Rack dimensions H x W x D (mm)	850 x 600 x 600	1300 x 800 x 1000	1300 x 800 x 1000	2100 x 800 x 1200
Solution dimensions H x W x D (mm)	850 x 850 x 600	1300 x 1060 x 1000	1300 x 1060 x 1000	2100 x 1130 x 1200
Static Load	500kg	1000kg	1000kg	1500kg
Total Rack U Space	13U	24U	24U	42U
IP Rating	IP54			
Power Input	230V 50Hz/60Hz - Power Distribution Panel			
Cooling Capacity (L35/L35)	500W	500W	1kW	2kW
Cooling Type	Self-Contained AC DX, EcoStruxure ITE enabled			
Noise Level	<65 dB			
Physical Security	Standard Mechanical Multi-point Lock			
Base	Plinth			
Cable Entry	Power and data cable glands			
Accessories	LED Light			
Deployment	Ships fully assembled with cooling and power distribution			
Warranty	1 year warranty, extend up to 3 years			

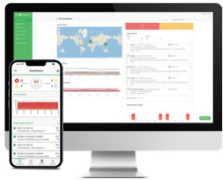
### Additions to Configure Complete Solution through Local Edge Configurator (LEC)

UPS	PDU	Security	Fire Suppression	Monitoring	Services
APC Smart-UPS, APC Easy UPS	NetShelter Basic, Metered, Switched Rack PDU	NetBotz 250, NetBotz 750 + Camera pod	2U Rack Fire Suppression Kit	EcoStruxure IT Expert	Warranty extension; Cooling Unit Maintenance

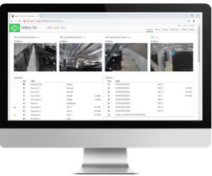
# Take control of edge environments with EcoStruxure IT

## Distributed IT edge and on-premise environments present new challenges.

The sprawling hybrid IT environment is challenging even the most sophisticated IT organizations with maintaining the resiliency, security, and sustainability of their IT systems. EcoStruxure IT is positioned to address these challenges.



**IT Expert** – A cloud-based, advanced remote monitoring tool for wherever-you-go visibility and alarms, preventative management, and data-driven recommendations to mitigate security and failure risks of the data center and distributed IT infrastructures.



**NetBotz™** – The solution consists of rack mount and wall mount appliances, sensor pods, and sensors, designed to provide a wide range of integrated environmental monitoring, surveillance, and access control for sensitive equipment.

