



# EcoStruxure Foxboro DCS operations for Bailey

A Schneider Electric DCS migration solution

## Solution at a glance

Considered the world's #1 HMI, Schneider Electric's AVEVA InTouch® software has been used in over one-third of the world's industrial facilities. Combined with the AVEVA System Platform, it delivers business value by helping you:

- Make better decisions
- Drive for maximum performance
- Increase your agility
- Lower your costs
- Reduce risk and stay secure

## Enhancing your Bailey DCS

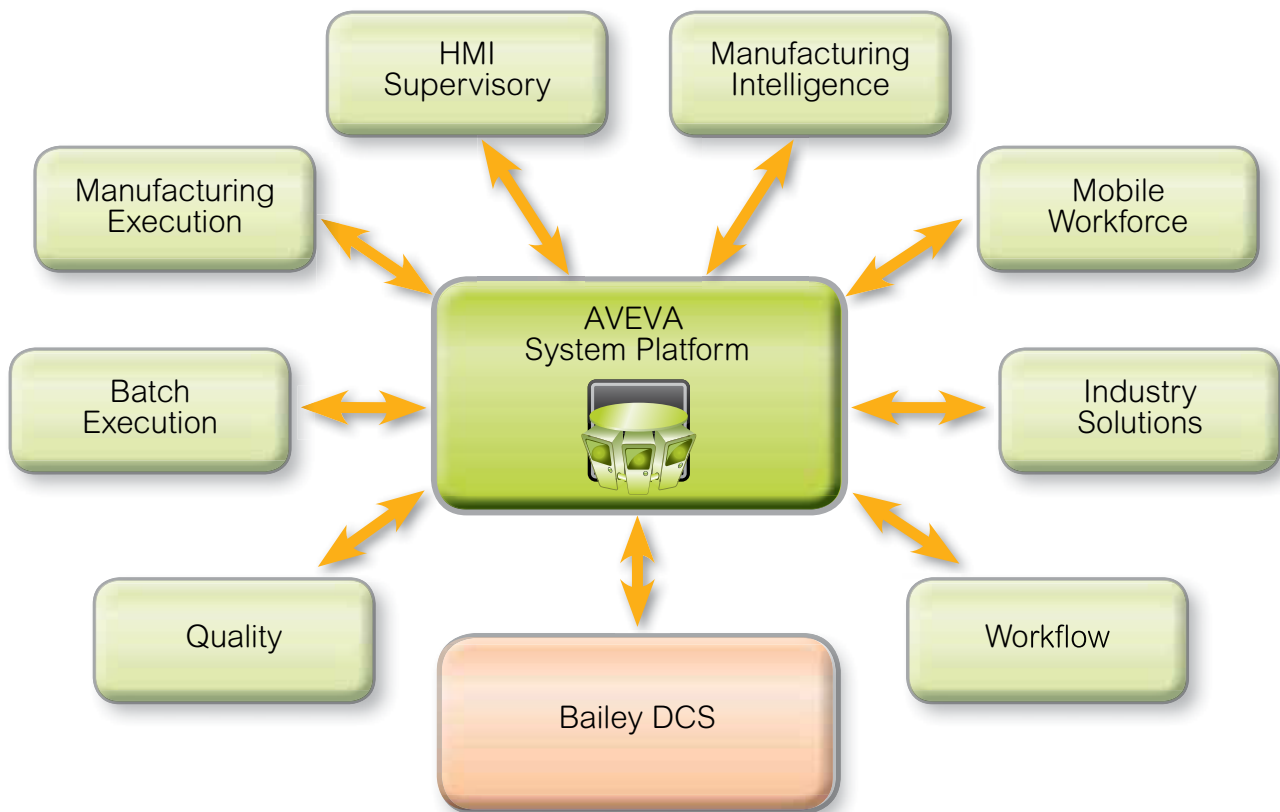
Augmenting your Bailey distributed control system with the AVEVA System Platform opens the door to the next generation of industrial operations management. In today's challenging times, you need to drive more performance from your assets, collaborate better and generate more value from your existing automation systems. Being the leader in human machine Interface (HMI) technology, Schneider Electric offers the next step in industrial software design and management — the Foxboro DCS to interface with your existing Bailey DCS.

EcoStruxure Foxboro DCS operations software includes the Schneider Electric AVEVA System Platform that acts as your industrial operating system by providing common services such as configuration, deployment, communication, security, data connectivity, collaboration, and many others. These services allow you to build a single, unified plant model that logically represents your processes, physical equipment and industrial systems (even legacy systems), making the design and maintenance of these systems more efficient, more flexible and with less risk. The plant model also gives

essential context to your data, greatly assisting with diagnostics and troubleshooting, as well as providing valuable system documentation throughout the system lifecycle. The plant model is unique to AVEVA System Platform.

### Future-proofing your investment

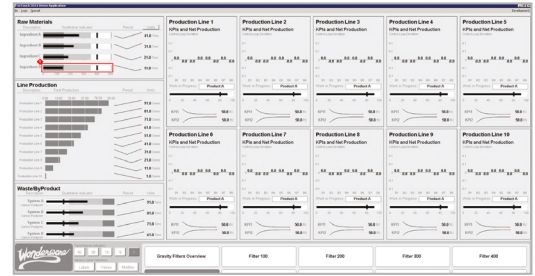
From day one, Schneider Electric has helped industrial companies, like yours, become more productive, save money, save time, and reduce risk during the entire life of their system. A Schneider Electric HMI implemented decades ago can still run, unchanged, on the latest software revision to give you the benefits of the latest hardware and operating system improvements with no re-engineering costs — no other company can make that claim.



## More than just an HMI — product features:

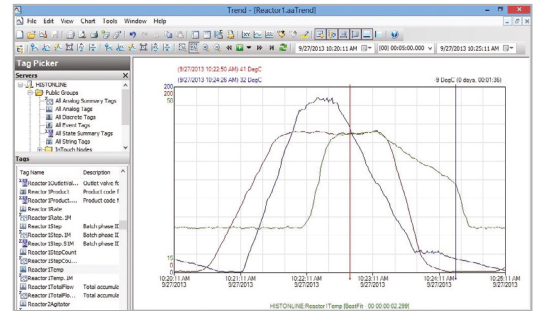
### HMI Supervisory

ArchestrA® graphics, along with object-based engineering approach and Integrated Development Environment, make it easier and faster than ever to create standardized HMI applications and deploy them across your industrial sites. All aspects of your equipment and processes can be captured in re-usable application templates — saving up to 70% in development time.



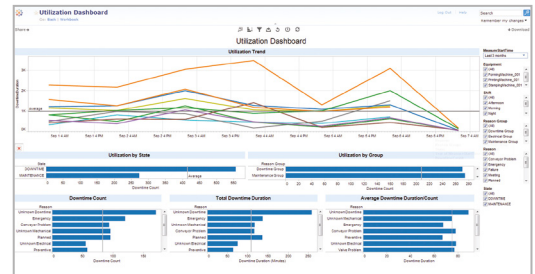
### Process Data Historian

Combine the power and flexibility of a relational database with the speed and compression of a true automation process historian. This simple, automated step, integrates the office with the factory floor or any industrial operation.



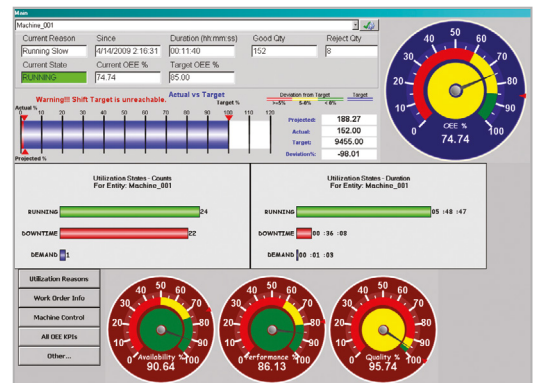
### Downtime Tracking

AVEVA System Platform allows you to add downtime tracking to your system so that configuration effort is minimized and key equipment downtime data is collected and available to you through powerful reporting tools.



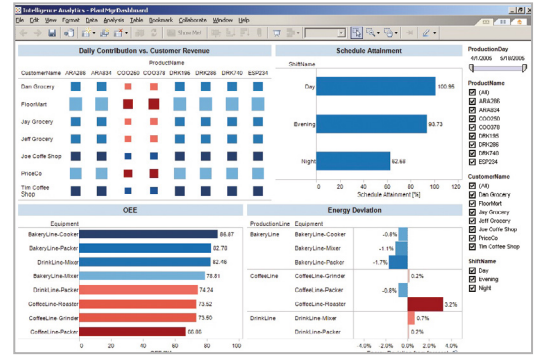
### Manufacturing

In any manufacturing process there are a large number of steps needed to complete an operation. These manufacturing steps and associated data collection activities can be added to application objects with minimal configuration effort. Essential data is collected to monitor and report on the performance of critical manufacturing processes.



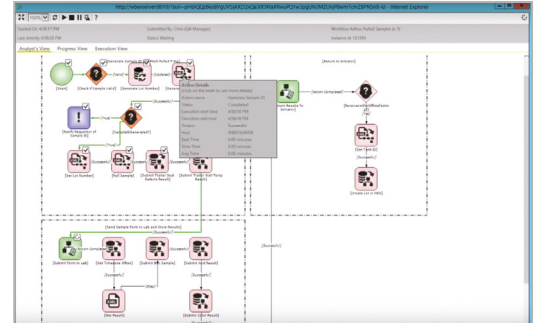
## Reporting and Analysis

Data captured by your AVEVA System Platform applications can be used to make a wide range of interactive reports and data analysis charts available on your desktop and via the web. The right information in the right context at the right time enables users to make timely and accurate decisions.



## Workflow

Business process management, workflow, is integrated into the AVEVA System Platform base templates. This enables companies to model, execute, analyze and improve work processes to drive higher levels of collaboration, productivity, and innovation.



## Mobile Solutions

Our mobile solutions enable you to push standardized operating procedures and data collection tasks to your mobile workers more easily than ever before. Your operators will be better informed and able to react faster and more consistently to process upsets or machinery failures.



## Situational Awareness Graphics

HMI displays that leverage best practice industry standards to minimize operator distraction and fatigue, and ultimately operational error to promote a safer operation for your plant.



## AVEVA System Platform advantages

Acting as the industrial operating system to support your applications, AVEVA System Platform provides many advantages to improve operations over traditional point solutions, including development, deployment, maintenance and security associated with multiple applications running at multiple sites; this significantly reduces the burden on your IT organization.

- **Development Advantages** — Traditional point solutions all require configuration and some degree of customization and scripting. Using only one development environment means your engineering teams are more productive and efficient.

- **Deployment Advantages** — Centralized deployment allows your engineering team to deploy entire systems or just small changes anytime without negative impact to your production or operations. And they can do these deployments from their offices.
- **Maintenance Advantages** — The more custom industrial applications you have, the more maintenance you need to perform. AVEVA System Platform’s object-based approach simplifies and reduces maintenance activities. New functionality can be added from a central location and the exact version of each application object is available to system administrators so that they can be sure what is deployed to the field.
- **Security Advantages** — Cybersecurity has never been more important than it is today. AVEVA System Platform is a highly secure development and deployment environment that can be configured to control system access and user rights, along with tracking system changes by user.

## With AVEVA system platform

Do it better	Do it safer	Do it faster	Do it cheaper
<ul style="list-style-type: none"> <li>• Powerful, intelligent graphics and faceplates provide context to data, enabling faster analysis and improved operator effectiveness.</li> <li>• Distributed alarm displays provide a comprehensive summary of current alarms so operators can minimize downtime and increase throughput.</li> <li>• Workflow ensures that critical, standard operating procedures are followed and are traceable.</li> </ul>	<ul style="list-style-type: none"> <li>• Reusable, pretested graphics will help lower your implementation risk, enforce standards, simplify application revision control and improve operator consistency.</li> <li>• Supports Microsoft integrated security, Active Directory and Smart Card technology. This helps you meet the most stringent security requirements.</li> <li>• Supports the latest Microsoft and VMware virtualization technologies to minimize downtime and keep you in control.</li> </ul>	<ul style="list-style-type: none"> <li>• Standardized, pretested graphics and automatic I/O switching allow application changes to be made quickly and safely.</li> <li>• Unique centralized deployment capability eliminates the need for someone to go to each facility to update applications.</li> <li>• Operators quickly absorb changes to standardized Foxboro DCS applications — helping to reduce operating errors and shorten learning curves.</li> </ul>	<ul style="list-style-type: none"> <li>• Allows you to build, test and deploy from a central location, thus saving you travel costs and engineering time.</li> <li>• Standardization and reusable design improves engineering efficiency, reduces the training burden and minimizes the cost of future changes</li> <li>• Reduces your hardware costs and improves your system’s availability and disaster recovery capabilities.</li> </ul>

## Interface capabilities

Our interface capabilities have been tested, benchmarked and validated and include the following.

Supported ABB Bailey Systems:

- Network 90
- INFI 90
- Symphony DCS

Supported Bailey Interfaces via RS232 serial or SCSI:

- NSPM01
- IMSPM01
- IMCPM02
- IMCPM03
- NCIC01
- NCIU01
- NCIU02
- NCIU03
- NCIU04
- INPCI01
- INPCI02
- IIMCP01
- IIMCP02
- INICI01
- INICI12
- INICI13
- INICI03

[se.com/dcs-migration-upgrade](https://se.com/dcs-migration-upgrade)

Life Is On

**Schneider**  
Electric™

Schneider Electric  
70 Mechanic Street  
Foxborough, MA 02035 USA  
+1 877 342 5173