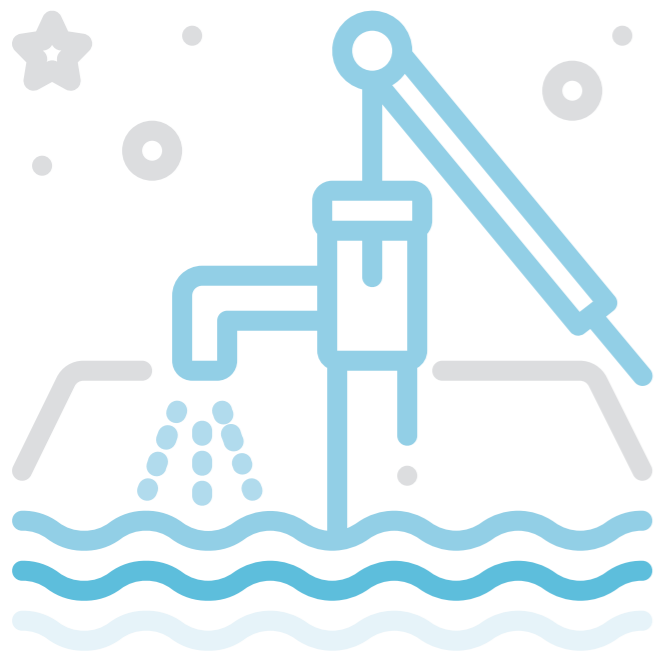

Water-intensive industries benefit from circularity, innovative investments, and data-driven technologies.

Driving sustainable water management





From semiconductor manufacturing to mining, water is an essential commodity for industry. It is also a precious and constrained resource. According to the UN, more than **2.3 billion people faced water stress** in 2022. Drought has cost the United States \$249 billion in economic losses since 1980.

Climate change is expected to worsen water problems through drought, flooding, and water contamination caused by extreme weather events. “I can’t think of a country on the planet that doesn’t have a water scarcity issue,” says Rob Simm, senior vice president at Stantec, an engineering consultancy focused on sustainability, energy solutions, and renewable resources.

Economic innovations, notably AI and electric vehicles, are also increasing industrial demand for water. “When you look at advanced manufacturing and the way technology is changing, we’re requiring more, higher volumes of ultrapure water [UPW]. This is a big driver of the industrial water market,” Simm says. AI, computing, and the electric vehicle industries all generate immense quantities of heat and require sophisticated cooling and cleaning. Manufacturing silicon wafers for semiconductor production involves intricate cleaning processes, requiring up to 5 million gallons of high-quality **UPW daily**. With rising demand for semiconductors, improvements in water treatment and reuse are imperative to prevent waste.

Key takeaways

- 1 Climate change and water scarcity are driving innovation aimed at ensuring a plentiful and clean water supply. Water stress is a real threat to water-intensive industries like semiconductor manufacturing, mining, energy, chemicals, and consumer packaged goods.
- 2 The evolution of water filtration systems during the last century – from sand filters to membrane filtration technology – has boosted accessibility to clean water for both humans and industrial users. AI technology promises much more.
- 3 Digital technology – AI, machine learning, digital twins, sensors, cloud, and more – can work with water-intensive industries to root out waste, find opportunities for investment and circularity, and shape engineering processes for sustainable water management.

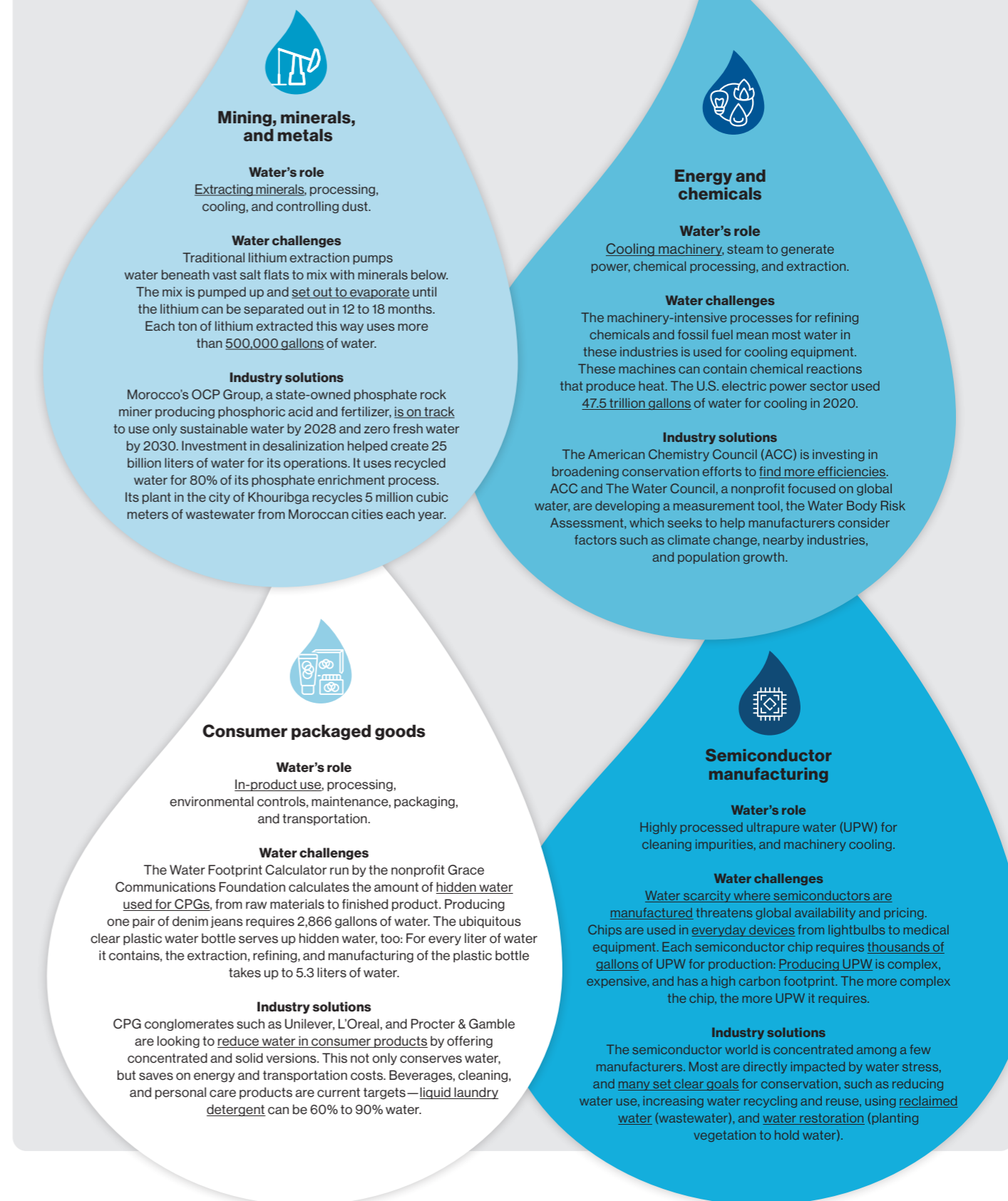
Data-driven industrial water management technologies are revolutionizing how enterprises approach conservation and sustainability. They are harnessing the power of digital innovation by layering sensors, data, and cloud-based platforms to optimize physical water systems and allow industrial and human users to share water access. **Integration of AI**, machine learning (ML), data analytics, internet of things (IoT) and sensors, digital twins, and social media can enable not just quick data analysis, but also can allow manufacturers to minutely measure water quality, make predictions using demand forecasting, and meet sustainability goals.

“When you look at advanced manufacturing and the way technology is changing, we’re requiring more, higher volumes of ultrapure water.”

Rob Simm, Senior Vice President, Stantec

The critical role of water in industry

Global companies move to prioritize water management in their sustainability efforts



More integrated industrial water management solutions, including reuse, industrial symbiosis, and **zero liquid discharge** (ZLD), will all be crucial as greenfield industrial projects look toward water reuse. “Water is an input commodity for the industrial process, and wastewater gives you the opportunity to recycle that material back into the process,” says Simm.

Treating a precious resource

Water filtration systems have evolved during the past century, especially in agriculture and industry. Processes such as low-pressure membrane filtration and reverse osmosis are **boosting** water access for both human and industrial users. **Membrane technologies**, which continue to evolve, have halved the cost of desalinated water during the past decade, for example. **New desalination methods** run on green power and are dramatically increasing water output rates.

Advances in AI, data processing, and cloud computing could bring a new chapter in water access. The **automation this permits** allows for quicker and more precise decision-making. Automated, preset parameters let facilities operate at capacity with less risk. “Digital technology and data play a crucial role in developing technology for water innovations, enabling better management of resources, optimizing treatment processes, and improving efficiency in distribution,” says Vincent Puisor, global business development director at Schneider Electric.

Puisor says his company uses sensors alongside cloud analytics and AI for a holistic approach to efficiency, providing the visibility to monitor processes and make predictions. “Previously, maintenance was scheduled at fixed intervals,” he explains. “Now, instead of predefined schedules, we have become much more proactive. Systems can react in real time based on data insights. With more available data and AI models analyzing it, systems can adapt and predict the impact of actions.”

Stantec helped New Zealand-based Wellington Water to build a predictive model of its operational performance, Simm says. The model used **pump data** to anticipate problems and detect failing pumps before service was affected. Simm says the model delivered an estimated 20% savings in electricity costs, translating to reduced emissions. And in another example, a wastewater treatment plant in Germany reduced its

aeration energy use by 30% after implementing an **IoT-powered digital twin**, with sensors estimating aeration and chemical inputs.

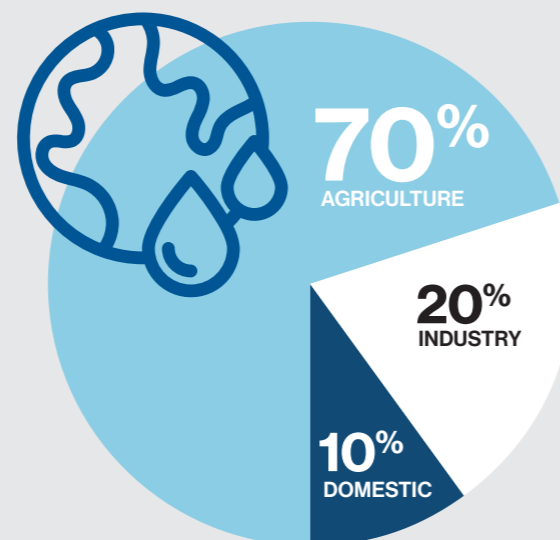
Prediction capabilities will be more important in a changing climate. **Scottish Canals**, for example, created a digital twin that simulates water conditions and weather data along the canal, allowing the organization to automate lock operations and control water levels ahead of potential flooding events.

Creating a data-driven circular water economy

Aquapolo is the largest project for production of reused water in South America, and it is one of the largest water reuse companies in the world, processing more than 250 gallons of reused water per second. It primarily serves industrial clients like Italian tiremaker Pirelli, Norwegian aluminum company Hydro, and petrochemical companies. Founded in response to climate change, Aquapolo counts GS Inima Industrial and São Paulo municipal sanitation company Sabesp as its partners. Aquapolo supplies recycled wastewater for industry in São Paulo.

Global fresh water use

Consumption of fresh water has been increasing about 1% each year.



Source: Compiled by MIT Technology Review Insights with data from “The United Nations World Water Development Report 2024: Water for prosperity and peace,” UNESCO, 2024

Water-scarce São Paulo, with more than 20 million residents, relies on the surrounding region’s resources. Urbanization created water availability conflicts in former industrial areas where residents sought new housing opportunities. “We have to use water rationally and efficiently,” says Aquapolo CEO Marcio da Silva Jose, as most of Brazil’s population lives in the southeast, far from the Amazon’s freshwater.

To create potable water, Aquapolo conducts tertiary treatment by acquiring wastewater from Sabesp, using a **biological reactor**, ultrafiltration, and reverse osmosis. The heart of the process is the biological reactor, which is a tank with a colony of bacteria that feeds on nitrogen, phosphorus, and organic material. Membrane filtration and selective reverse osmosis for high mineral content ensure that the water is safe for consumption and industrial use.

Data is also advancing Aquapolo’s efforts to create a circular economy. The company uses AI tools to help optimize decision-making, with automation and remote monitoring built into its processes. Its data repository stores all data from the company’s operations, including parameters such as the water’s ammonia content, conductivity, and pH levels. “With this remote monitoring system, we can operate the entire plant from one control room,” says Jose.

“Digital technology and data play a crucial role in developing technology for water innovations, enabling better management of resources, optimizing treatment processes, and improving efficiency in distribution.”

Vincent Puisor, Global Business Development Director, Schneider Electric

Unlocking sustainable mining

German supplier of pumps and pump systems Wilo has put sustainable water management at the forefront of its business, using data-powered technologies to **optimize water consumption**. As the quantities of water in mining vary greatly across regions, technology is key to ensuring that operators properly manage limited resources and avert dangerous flooding. “Much mining infrastructure is really obsolete,” says Tushar Sheel, market management and business development manager at Wilo. “Data from our equipment and the surrounding environment can provide better systems control and allow us to predict issues before they happen.”

Wilo uses Schneider Electric’s integrated IoT platform for monitoring and managing machines and operations. IoT-enabled sensors detect water levels and energy consumption, as well as identifying any potential flaws or malfunctions in the equipment. The ability to monitor equipment located up to 50 kilometers away enables remote oversight from one central location. “It’s important that the pumps never stop, so if something goes wrong, the workers need to be on-site immediately to repair the pumps,” says Sheel. “With analytics, they can know how much time is left for the pump to run, and they can automatically order spare parts or check their stocks in advance. They can know beforehand if there will be a failure, and they can mitigate it.”

Matthias Pantze, group director of strategic business development at Wilo, says that predictive capability is significant. “When we notice early if there is something we need to change in the system, it reduces our risk by allowing us to intervene earlier or prevent bigger damages to the equipment.”

This data archive is helpful in understanding São Paulo’s seasonal patterns, with its pronounced rainy and dry seasons, and their effects on the city’s environmental conditions. Data analytics provides insight and identifies trends tailored to meteorological needs. “We can analyze what happens to different parameters each month and correlate that data to predict chemical consumption, optimal membrane cleaning times, and so on,” says Jose. “Digital and data solutions provide amazing help for us to predict scenarios, measure impacts in real time, and make comparisons.”

Data is also invaluable for managing toxic pollutants that may impact the biological reactor’s bacteria levels. Aquapolo takes preemptive measures by temporarily shutting off the wastewater inflow when analytics anticipate excess pollutants. “By measuring these parameters, we’re able to predict what may happen in the future; we shut off the supply of wastewater when we detect a potentially dangerous level of pollutants, and replace it with a supply of clean water, so the system can keep operating without becoming contaminated,” says Jose.

Highlighting Aquapolo’s success in using digital solutions for water processing, Jose says their production is high enough that industry no longer competes with the local population for water resources. This success is a model for water-intensive industries around the globe.

Environmental data shows that the **factors that increase water stress continue to rise**: the **global urban population** is slated to grow by a factor of 1.5, reaching 6 billion people; **worldwide water demand** is expected to increase 55% by 2050. Some studies say **global water use for energy** will increase 20% over 2010 figures by 2035, and by **85% by 2050**. Water, Jose says, “is a very important and finite resource we have. So, we must take better care and change the way we deal with it. We can stop wasting water right now, and that’s a must.”

“Digital and data solutions provide amazing help for us to predict scenarios, measure impacts in real time, and make comparisons.”

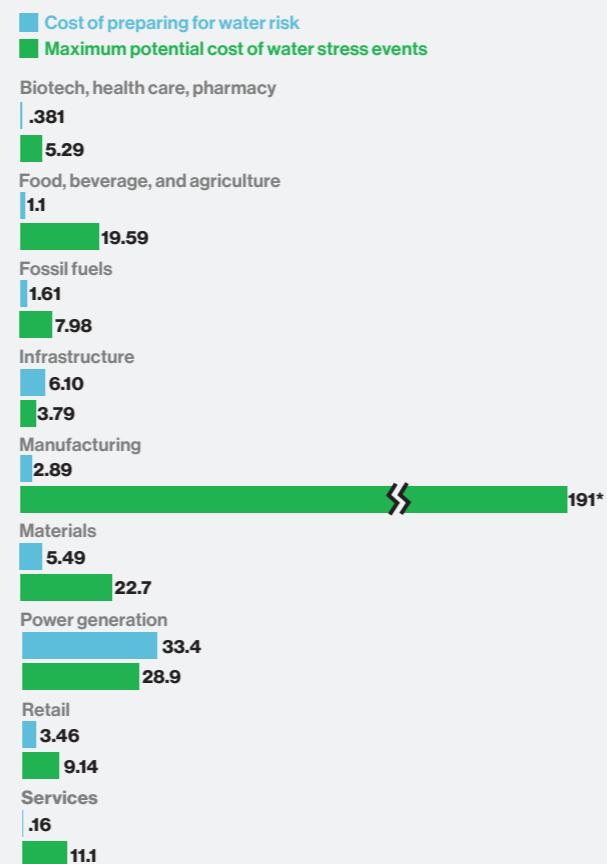
Marcio da Silva Jose, CEO, Aquapolo

The cost of water emergencies

The Carbon Disclosure Project (CDP) is a global nonprofit that gathers and standardizes environmental data from more than 23,000 companies and 1,100 government entities.

CDP data from 2020 data shows that the maximum potential cost of water emergencies to industry is more than five times higher than the cost of preparing for them.

“Water emergencies” include flooding, water scarcity, regulatory restrictions, drought, severe weather, and damage to water quality.



*This figure is high in part due to the large number of manufacturing respondents and two significant figures exceeding \$50 billion: one linked to flooding, and another linked to reputational risk associated with pollution.

Source: Compiled by MIT Technology Review Insights with data from the “CDP Global Water Report for 2020,” 2024.

“Driving sustainable water management” is an executive briefing paper by MIT Technology Review Insights. We would like to thank all participants as well as the sponsor, Schneider Electric. MIT Technology Review Insights has collected and reported on all findings contained in this paper independently, regardless of participation or sponsorship. Michelle Brosnahan was the editor of this report, and Nicola Crepaldi was the publisher.

About MIT Technology Review Insights

MIT Technology Review Insights is the custom publishing division of MIT Technology Review, the world’s longest-running technology magazine, backed by the world’s foremost technology institution – producing live events and research on the leading technology and business challenges of the day. Insights conducts qualitative and quantitative research and analysis in the U.S. and abroad and publishes a wide variety of content, including articles, reports, infographics, videos, and podcasts. And through its growing MIT Technology Review Global Insights Panel, Insights has unparalleled access to senior-level executives, innovators, and entrepreneurs worldwide for surveys and in-depth interviews.

From the sponsor

We drive digital transformation by integrating world-leading process and energy technologies to realize the full efficiency and sustainability opportunities for your business. We provide end-point to cloud integration connecting products, controls, software and services. We enable lifecycle solutions from design and build to operate and maintain phases through a digital twin. We deliver capabilities to transform from site-to-site to an integrated company management. Our integrated solutions are built with safety, reliability and cybersecurity for your homes, buildings, data centers, infrastructure, and industries.



Illustrations

Cover art by Adobe Stock, spot illustrations created by Chandra Tallman Design LLC, compiled from The Noun Project and Adobe Stock.

While every effort has been taken to verify the accuracy of this information, MIT Technology Review Insights cannot accept any responsibility or liability for reliance by any person on this report or any of the information, opinions, or conclusions set out in this report.

© Copyright MIT Technology Review Insights, 2024. All rights reserved.



MIT Technology Review Insights

www.technologyreview.com

insights@technologyreview.com