



Resilient Supply Chain

EcoStruxure™ enables trust in the Food & Beverage,
Household and Personal Care industries

Life Is On

Schneider
Electric

We help on every step of the value chain

Efficient facilities

Safer, more available,
and greener resources

Agile manufacturing

Boost manufacturing
flexibility & efficiency

Resilient supply chain

Manage complexity and
improve visibility

... enabled by transversal digital transformation capabilities

Food Safety & Traceability

Ensure compliance and increase trust across the whole value chain

Energy & Sustainability

Reduce environmental footprint and meet sustainability goals

Asset Performance

Maximize return on asset investment

Workforce Empowerment

Take teams efficiency to the next level

Digital Engineering

Cut time, cost and risks of capital project engineering

Manage complexity and improve visibility across your Supply Chain



Agriculture efficiency & sustainability

Help farmers and agri-business improve productivity, better manage the use of resources and achieve regulation compliance and traceability.

Greater yield

leveraging digital solutions



Warehouse management

Ensure process, control and optimization of warehouse operations to improve efficiency and address ecommerce imperatives.

Increased **productivity** while ensuring safety



Supply chain optimization

Increase your visibility, improve agility and performance to build a resilient supply chain, end-to-end.

Build a **resilient** Supply Chain



Product Information Management

Ensure the right information related to the product is available for a seamless omnichannel retail experience

Up to **17%** increase in data accuracy



Cold chain monitoring

Manage efficiently your assets tracking, performance and maintenance to optimize your supply chain logistics

Ensure efficient & **secure operations**

Resilient Supply Chain

Manage complexity and improve visibility across your supply chain



Product Information Management

Ensure the right information related to the product is available for omnichannel retail

In average
300
attributes
per SKU

Multiple sources and usages of Product Data

- New product rollouts take in average **4 weeks** due to inefficient & error on item attributes.

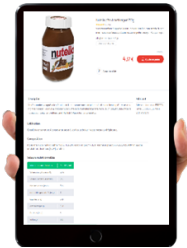
30%

of all product data contains errors in their listing with retailers



Omnichannel Retail Strategy

- Retailers want more Product Data in less than **3 days**
- Seamless shopping experience for the end-consumers across the different channels
- **E-Commerce booming** – According to WEF, from 10% today **up to 40%** in 2027



Nutrition Facts	
Serving size	1 packet (5.5g)
Amount per serving	
Calories	15
Total Fat 0g	% Daily Value*
Saturated Fat 0g	0%
Trans Fat 0g	0%
Cholesterol 0mg	0%
Sodium 500mg	23%
Total Carbohydrate 3g	1%
Dietary Fiber 0g	0%
Total Sugars 1g	
Includes 0g Added Sugars	0%
Protein 0g	
Vitamin D 0mg	0%
Calcium 15mg	2%
Iron 0mg	0%
Potassium 47mg	2%

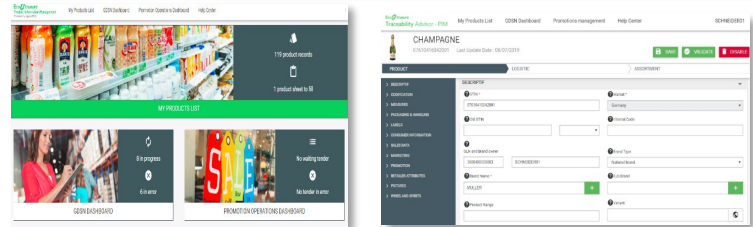
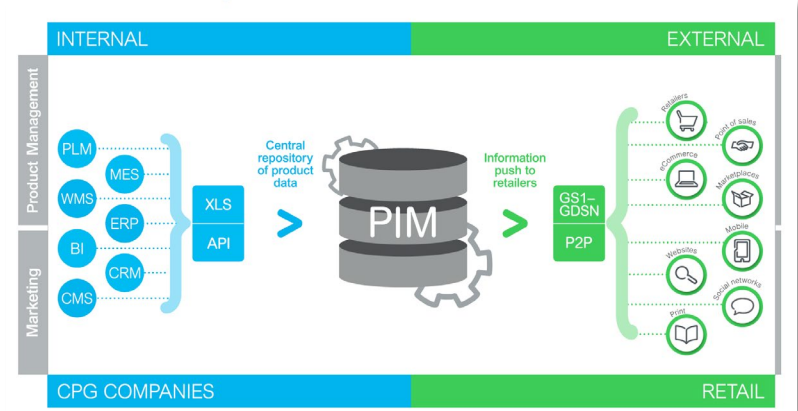
Nutrition Facts	
Serving Size	230 cup (55g)
Servings Per Container	About 8
Amount Per Serving	
Calories 230	Calories from Fat 72
	% Daily Value*
Total Fat 8g	12%
Saturated Fat 1g	5%
Trans Fat 0g	
Cholesterol 0mg	0%
Sodium 160mg	7%
Total Carbohydrate 37g	12%
Dietary Fiber 4g	16%
Sugars 1g	
Protein 3g	
Vitamin A	10%
Vitamin C	8%

EcoStruxure™ Traceability Advisor – PIM

Ensure the right information related to the product is available for omnichannel retail

The solution

- «Out-of-the-shelf» pre-parameterized solution: a **central repository** for product information storage and management used by CPG manufacturers and a tool to push product information from multi-source data to different retail channels
- **Complete suite of solution:** PIM + GDSN + Datapool
- **Specific F&B features:** Pricing attribute, product Data syndication, Promotion and Call for Tender Management
- **Compliant to GS1 standards** and GDSN requirements
- **Cloud-based solution** aligned with latest Cyber Security requirements
- Smart & Flexible, easy to integrate more product attributes on demand (GS1 and/or local regulation/standard)
- Includes **Marketing B2C features**, thanks to DAM (Digital Asset Management) integrated in a unique solution
- Easy to scale up with a typical ROI << 1 year



PLM: Product Lifecycle Management
MES: Manufacturing Execution System
WMS: Warehouse Management System
ERP: Enterprise Resource Planning
BI: Business Intelligence
CRM: Customer Relationship Management
CMS: Content Management System

EcoStruxure Traceability Advisor – PIM

Ensure the right information related to the product is available for omnichannel retail

Business value

- **Increased product data accuracy**
Reduction of data redundancy and data storage costs
- **Faster time to market**
Fast track new products on standardized templates
- **Increased operational efficiency**
Consolidation of information from disparate systems
- **Reduction of business risks**
PIM enables data compliance with industry regulations (e.g. in Europe, [Directive n°1169/2011 – INCO](#) information for labelling of products; and [FDA 21CFR part 101](#))
- **Improved shopping experience**
PIM is a central repository with a single up-to-date version of product data enabling a seamless shopping experience for your end-consumers

Learn more

up to **\$80** saved per SKU



Data transparency

Quality and availability
Improve end-user stickiness
Reduce business risks (**GS1** compliant)

between 17 –

56%

increase in online conversion rates



Operational efficiency

Reduce data redundancy
Reduce data storage costs

up to

67%

reduction in labor costs



Minimized time to market

Optimize data exchange
Enhanced shopping experience
Enhanced SEO visibility

up to

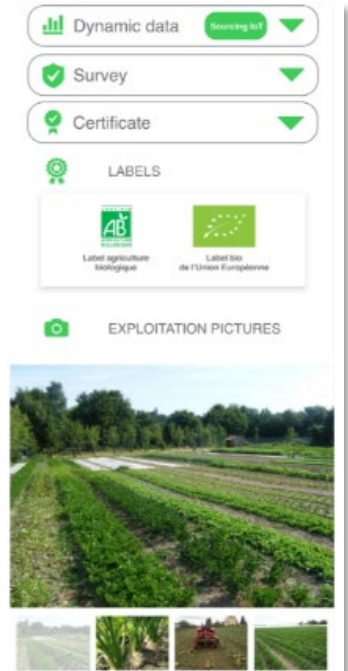
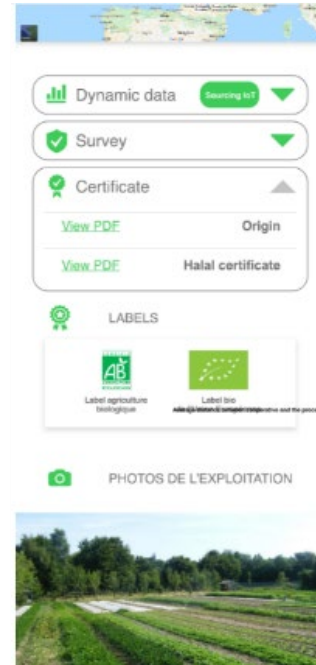
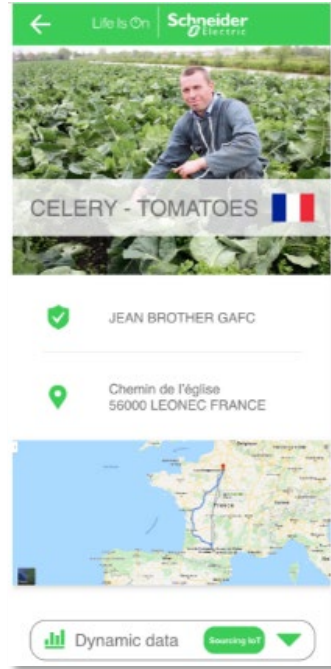
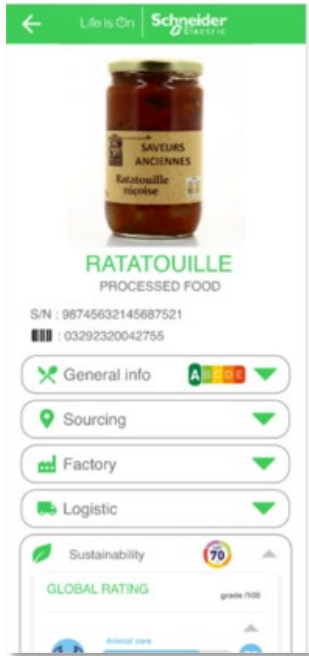
17%

increase in data accuracy & consistency

from **24** → **4** mins **reduced** time for updates

EcoStruxure™ Traceability Advisor- App

Connecting the entire Value Chain into a single App



See 3D demo

Leader in Fruits & Dairy Products, France

Centralized and Global Source of Truth for Product Data



Customer Challenge

- Manage the product references (25,000 products) in a consistent way between the different entities using different ERPs and MES systems in 24 countries.
- Share the product information efficiently with retailers in a multi-channel environment.

The Solution

- Deployment of EcoStruxure Traceability Advisor - Product Information Management (PIM), internal solution deployed in 24 countries

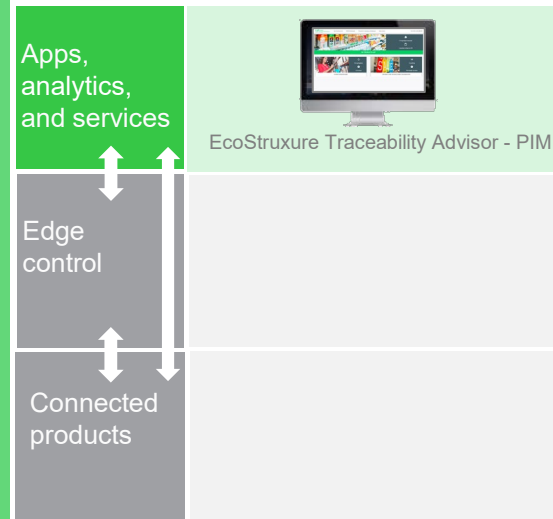
Customer Benefits

- Central team deploying the solution globally
- Reduction of costs and errors linked to product data management
- Improved data quality & availability: +20% increase in data accuracy
- Reduced time to market: speed-up internal workflow from factories to sales entities and ease data exchange with end-customers
- Process effectiveness: +50% reduction in labour costs

The Results: Life is On with... A single source of truth and trust regarding Product Data

French leader in fruits and dairy products with strong international presence

EcoStruxure for Food & Beverage
Innovation At Every Level



Life Is On

Schneider
Electric

Resilient Supply Chain

Manage complexity and improve visibility across your supply chain



EcoStruxure for Food & Beverage / CPG

Agile manufacturing Boost manufacturing flexibility and efficiency

- Manufacturing Operation Management
- Industrial Information Management
- Process Control System
- HMI and data Integration
- Process Automation
- Packaging Automation

Efficient facilities Safer, more available, and greener resources

- Smart Building Management
- Power Safety & Availability
- Power Quality & efficiency
- Renewable Energy & Microgrids
- IT Infrastructure Management

Resilient supply chain Manage complexity and reduce logistics costs

- Agriculture Efficiency & Sustainability
- Suppliers Management
- Supply Chain Optimization
- Cold Chain Monitoring
- Product Information Management

Food Safety & Traceability Ensure compliance and trust across the product life cycle

- Food Defense
- Cybersecurity Services
- Digital Calibration
- Raw material traceability
- Production traceability
- Product Identification & Tracking

Energy & Sustainability Reduce footprint and meet sustainability goals

- Sustainability Consulting
- Energy Demand Services
- Strategic Energy Sourcing
- Enterprise data management
- Energy as a Service

Asset Performance Maximize return on capital expenditure

- Assessment and Consulting
- Enterprise Asset Management
- Condition Monitoring
- Predictive Analytics
- Line & Process Optimization
- Modernization services

Workforce Empowerment Improve staff knowledge, productivity and collaboration

- Operator Training Simulator
- Augmented & Virtual Reality
- Workflow Management
- Staff Schedule Management
- Operator Knowledge Sharing

Digital Engineering Cut time, cost and risks of capital project engineering

- Electrical CAD
- Building Information Modelling
- Integrated Engineering-Design
- Digital Asset Visualization



Let's talk about
EcoEtruxure™
for Food & Beverage

Life Is On

Schneider
Electric

Life Is On

Schneider
Electric