

A woman in a blue blazer and a man in a grey polo shirt are standing in a server room, looking at a tablet together. The room is filled with rows of black server racks and overhead metal racks for cables. The floor is a light-colored tiled grid.

# Efficient Facilities

EcoStruxure™ manage safer, more available and greener resources  
for Food & Beverage, Household and Personal Care production environments

Life Is On

**Schneider**  
Electric

An aerial photograph of a river winding through a dense, lush green forest. The river is dark and reflects the surrounding trees. The forest is thick and vibrant green, covering the entire landscape. The text is overlaid on the center of the image.

**Our mission is to be  
your digital partner for Sustainability and Efficiency**



**Rethinking next generation industries:  
business resilience and sustainability performance  
for lifecycle integrated management**

# We help on every step of the value chain

**Efficient facilities**  
Safer, more available,  
and greener resources

**Agile manufacturing**  
Boost manufacturing  
flexibility & efficiency

**Resilient supply chain**  
Manage complexity and  
improve visibility

# ... leveraging transversal digital transformation capabilities

## Food Safety & Traceability

Ensure compliance and increase trust across the whole value chain

## Energy & Sustainability

Reduce environmental footprint and meet sustainability goals

## Asset Performance

Maximize return on asset investment

## Workforce Empowerment

Take teams efficiency to the next level

## Digital Engineering

Cut time, cost and risks of capital project engineering

# Efficient Facilities

Safer, more available and greener resources

## Power Safety & Availability

Standardization, site assessment, and predictive maintenance for safe and available power

## Building management

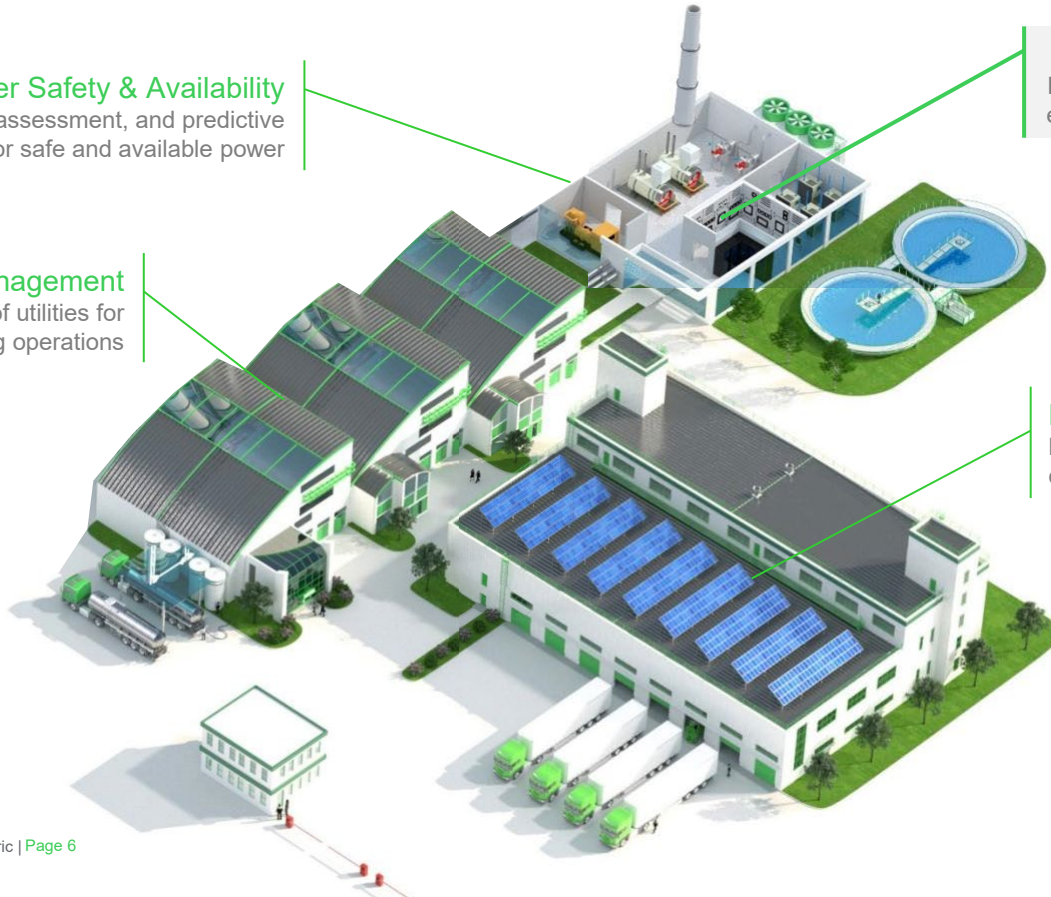
Effective and efficient use of utilities for your manufacturing operations

## Server Rooms management

Provide self contained and secure computing environment for your on-premise applications

## Renewable Energies & Microgrid

Manage complex energy mix to optimize cost and carbon footprint.



# Server Rooms management

Provide self contained and secure computing environment for your on-premise applications

## Data Management



- Increasing need for data collection at the edge?
- Data availability and consistency?
- Cybersecurity risks?

## Operational Constraint



- Limited space?
- Scalability issues?
- Maintenance cost

# Schneider Electric's micro data center portfolio allows replacement of large server rooms



A comprehensive portfolio available in few weeks

## SmartBunker™ SX, CX, &FX



## Smart Shelter™



## Industrial racks



All manufactured, assembled & tested in a Schneider Electric facility



# EcoStruxure Micro Data Center

## The Solution



- Protect against physical and environmental threats with camera monitoring, keylock doors, intrusion detection, and more.
- Complete offer of enclosures with different features to host the necessary IT equipment in any environment.
- Pre-integration Capability. Shock packaging allows equipment to be pre-integrated into the enclosure before it arrives on-site, speeding up deployment
- Reduce service visits and downtime. Reliable power and security offers coupled with proactive services and analytics

+ Remote monitoring & services



Alliance  
Partner Program



## Business Value

### Plug&Play, Cost Effective, Standardized

EcoStruxure Micro Data Centers provide the reliability, resiliency, and security of a datacenter in a single enclosure that can be distributed in any edge environment.

- ✓ Reduce time to market
- ✓ Prevent equipment failures
- ✓ Reduce maintenance costs
- ✓ Extend equipment useful life
- ✓ Improve security

### Pre-approved reference designs\*



*\*Pre-configured solutions increase deployment speed and reduce field engineering costs by 25-40%, increase order processing speed by 20% and reduce maintenance costs by 7%. WWT.*

Life Is On

Schneider  
Electric

# IT Infrastructure Management

We have built a strong leading position in all applications...

## Data Center

IT inside the data center

### Racks & enclosures



IT Racks & Cabinets

### Cooling



Room A/C & chillers

### Prefab



Prefabricated modules



3-phase UPS



Switchgear & busways  
(cross-selling)

### Software



DCIM

Software & services

Schneider  
Electric

#1 market share

## Industrial

Heavy and light industrial applications

### 3-phase UPS



IT 3ph modular UPS



Industrial 3ph

### Inverters



Industrial inverters

### Micro Datacenters



Schneider  
Electric

#2 market share

# Server Rooms management

Provide self contained and secure computing environment for your on-premise applications

## Data Management



- Up to 25 less downtime risks
- Cost effective redundancy
- Faster incident resolution
- Cyber Risks mitigation

## Operational Constraint



- Up to 60% reduction in footprint
- Reduction of cost of design
- Very fast deployment
- Optimized performance (up to 30% in power and maintenance costs)

# Global Fast-Food Player

Micro data center infrastructure anywhere, anytime, Brazil



## Customer Challenge

- Deploy secure, computing infrastructure to manage supply chain and other business operations at every location.
- Faster update of sales and marketing activities
- Minimize capital and operating costs e.g. maintenance and persona

## The Solution

- Smart Bunker - Micro Data Center Xpress SX
- 1.5 KVA Uninterruptible Power Supply
- Power Cord and Basic rackmount Power Distribution Unit

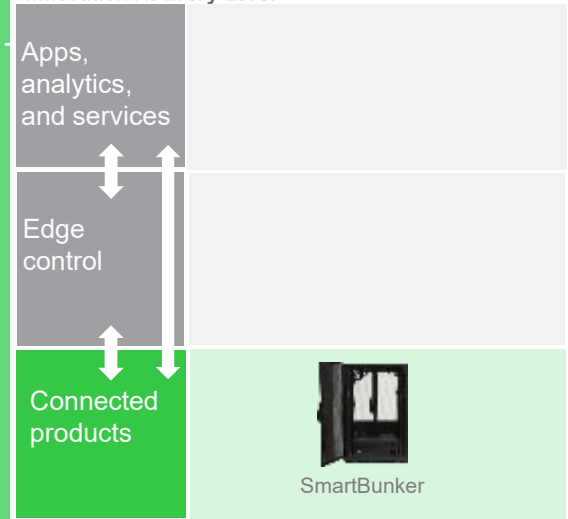
## Customer Benefits

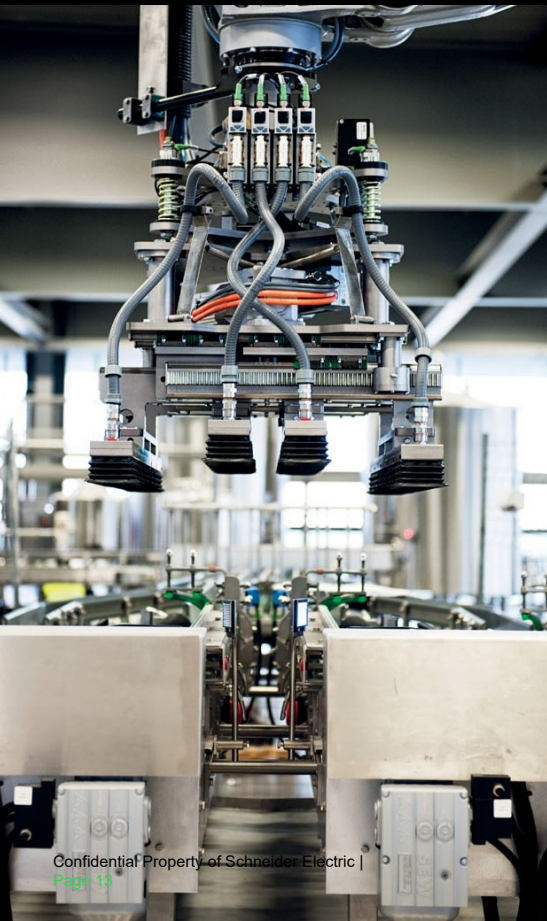
- Pre-validated and standardized solution across multiple stores and regions
- Delivery process simplification
- Simplified single-vendor service support

The Results: Life is On with... 20% reduction in lead time with convenient delivery process and operational maintenance.

Add Data Center capacity anywhere and anytime – in both IT room and industrial environments

**EcoStruxure™**  
Innovation At Every Level for Retail





### Customer Application

- Digital control of Champagne filling and labelling: Inspection systems that leverage HD high speed camera for real time quality controls.

### Customer Challenges

- **Factory:** M&C believes that quality control is essential when you strive to deliver a consistent premium product. This means that quality control must be best-in-class and always on.
- **IT division:** No server room available, need of high bandwidth & speed infra for image mining / analysis real time, need resilient & secure IT equipment.

### The Solution

- Pre-integrated end-to-end Edge solution deployed by Actemium, France Industrial System Integrator

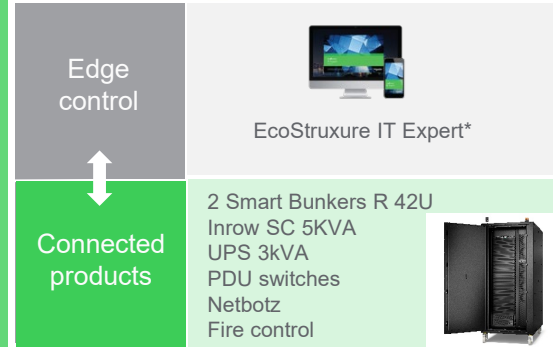
### Key success factors

- Internal collaboration btw Industry & Secure Power
- Strong relationships with customer's IT & Quality
- Strong relationships with Actemium, the trusted advisor of our customer



Driven by its pioneering spirit, **Moët & Chandon** has always produced a Champagne with an inimitable identity. The new factory reflects this mission: Factory 4.0 that combines innovation, efficiency and aesthetics.

**EcoStruxure** for Data Center  
Innovation At Every Level



# Nestlé Brazil

Sustainable Data Center provided by  
EcoStruxure IT



## Customer Challenge

- New HQ for Nestlé Brazil en Sao Paulo, centered on innovative sustainable solutions for which a new Data Center infrastructure was needed

## The Solution

- EcoStruxure IT including:
- EcoStruxure IT Expert
- NetBotz, PDU racks
- UPS

## Customer Benefits

- Optimized solution vs what was originally planned (space & footprint)
- Redundant solution enabling energy efficiency and reliability
- Quick and flexible implementation thanks to a standard solution
- Modular solution enabling the expansion of the data center depending on demand

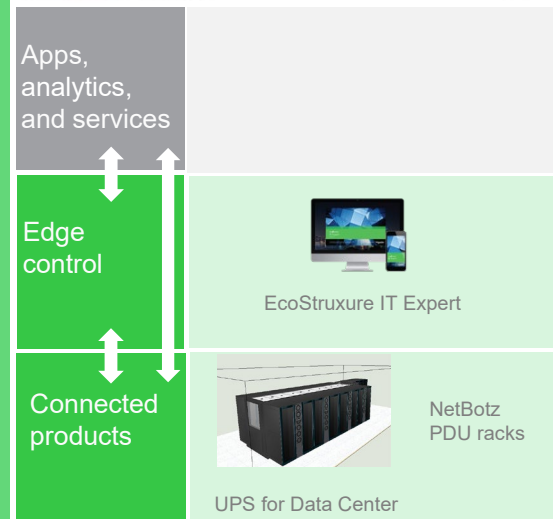
## The Results: Life is On with... Sustainable solution aligned with the LEED certification of the building

*"Nestlé is moving forward with the implementation of technologies from Industry 4.0 and accelerating the expansion plan, always focusing on solutions that bring operational and financial results to the company. Fernando Molina, IT Manager Nestlé Brasil.*

[Link to Paper \(Spanish\)](#)

The new Nestlé Brasil HQ is installed in a complex that is LEED Gold certified, one of the highest standards for building sustainability worldwide, implying efficiency for water, energy and waste management among other parameters.

**EcoStruxure** for Food & Beverage  
Innovation At Every Level



# Efficient Facilities:

Safer, more available and greener resources

## Power Safety & Availability

Standardization, site assessment, and predictive maintenance for safe and available power

## Building management

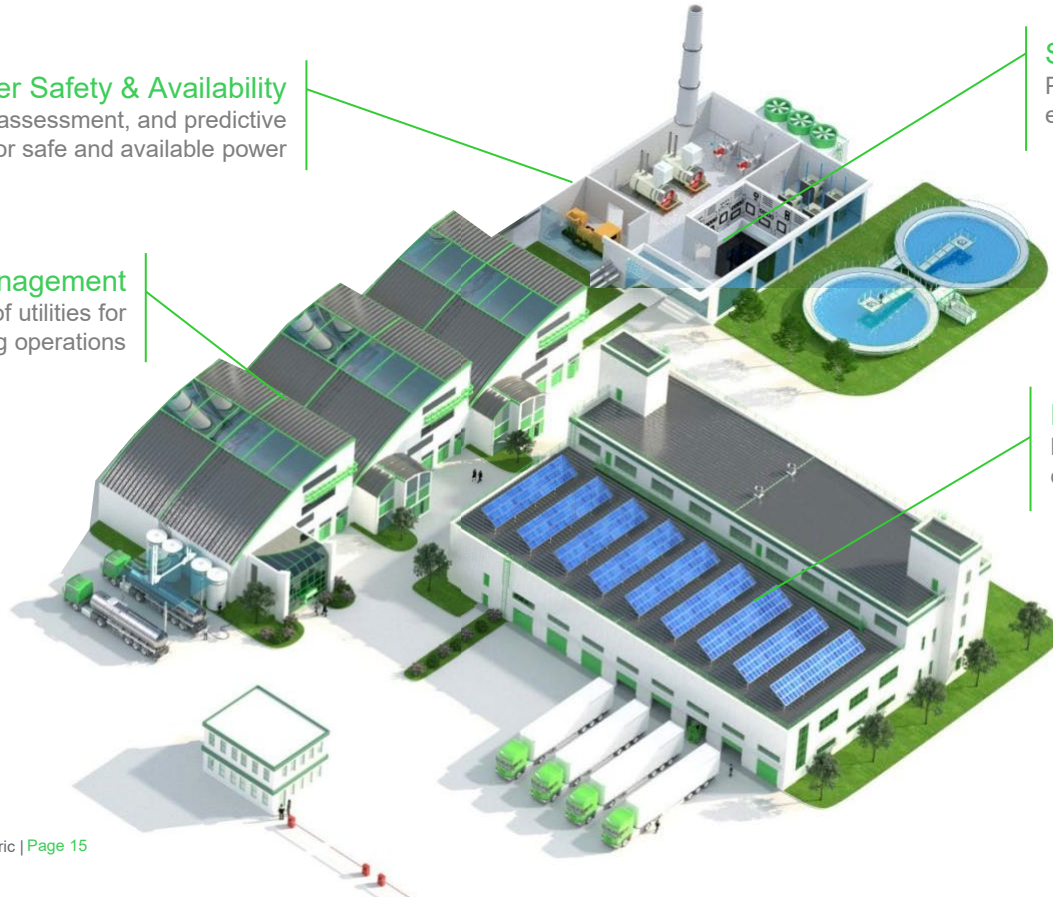
Effective and efficient use of utilities for your manufacturing operations

## Server Rooms management

Provide self contained and secure computing environment for your on-premise applications

## Renewable Energies & Microgrid

Manage complex energy mix to optimize cost and carbon footprint.



# EcoStruxure for Food & Beverage / CPG

## Agile manufacturing Boost manufacturing flexibility and efficiency

- Manufacturing Operation Management
- Industrial Information Management
- Process Control System
- HMI and data Integration
- Process Automation
- Packaging Automation

## Efficient facilities Safer, more available, and greener resources

- Smart Building Management
- Power Safety & Availability
- Power Quality & efficiency
- Renewable Energy & Microgrids
- IT Infrastructure Management

## Resilient supply chain Manage complexity and reduce logistics costs

- Agriculture Efficiency & Sustainability
- Suppliers Management
- Supply Chain Optimization
- Cold Chain Monitoring
- Product Information Management

## Food Safety & Traceability Ensure compliance and trust across the product life cycle

- Food Defense
- Cybersecurity Services
- Digital Calibration
- Raw material traceability
- Production traceability
- Product Identification & Tracking

## Energy & Sustainability Reduce footprint and meet sustainability goals

- Sustainability Consulting
- Energy Demand Services
- Strategic Energy Sourcing
- Enterprise data management
- Energy as a Service

## Asset Performance Maximize return on capital expenditure

- Assessment and Consulting
- Enterprise Asset Management
- Condition Monitoring
- Predictive Analytics
- Line & Process Optimization
- Modernization services

## Workforce Empowerment Improve staff knowledge, productivity and collaboration

- Operator Training Simulator
- Augmented & Virtual Reality
- Workflow Management
- Staff Schedule Management
- Operator Knowledge Sharing

## Digital Engineering Cut time, cost and risks of capital project engineering

- Electrical CAD
- Building Information Modelling
- Integrated Engineering-Design
- Digital Asset Visualization



A photograph of two men in white lab coats and hairnets standing on a factory floor, leaning on a yellow and black railing. They are looking at each other and talking. The background shows a complex industrial facility with various pipes, structures, and equipment. The text "Let's talk about it." is overlaid in the center of the image.

Let's talk about it.

Life Is On



**Schneider**  
Electric