

A man wearing a white lab coat and a yellow hairnet is leaning over a large industrial machine in a factory. He is holding a blue pen in his right hand and a tablet in his left hand. The background is a blurred industrial setting with various pieces of equipment and pipes.

Agile Manufacturing

EcoStruxure™ boosts manufacturing flexibility & efficiency
in the Food & Beverage, Household and Personal Care industries

Life Is On

Schneider
Electric

Agile Manufacturing

Transforming operations to improve flexibility and profitability

HMI and Data Integration

IoT ready system platform for better collaboration and reduced TCO

Process Control System

Process control system including MES functions designed to serve F&B and CPG applications

Process Automation

Innovative Ethernet based control platform for more performance, transparency and flexibility

Industrial Information Management

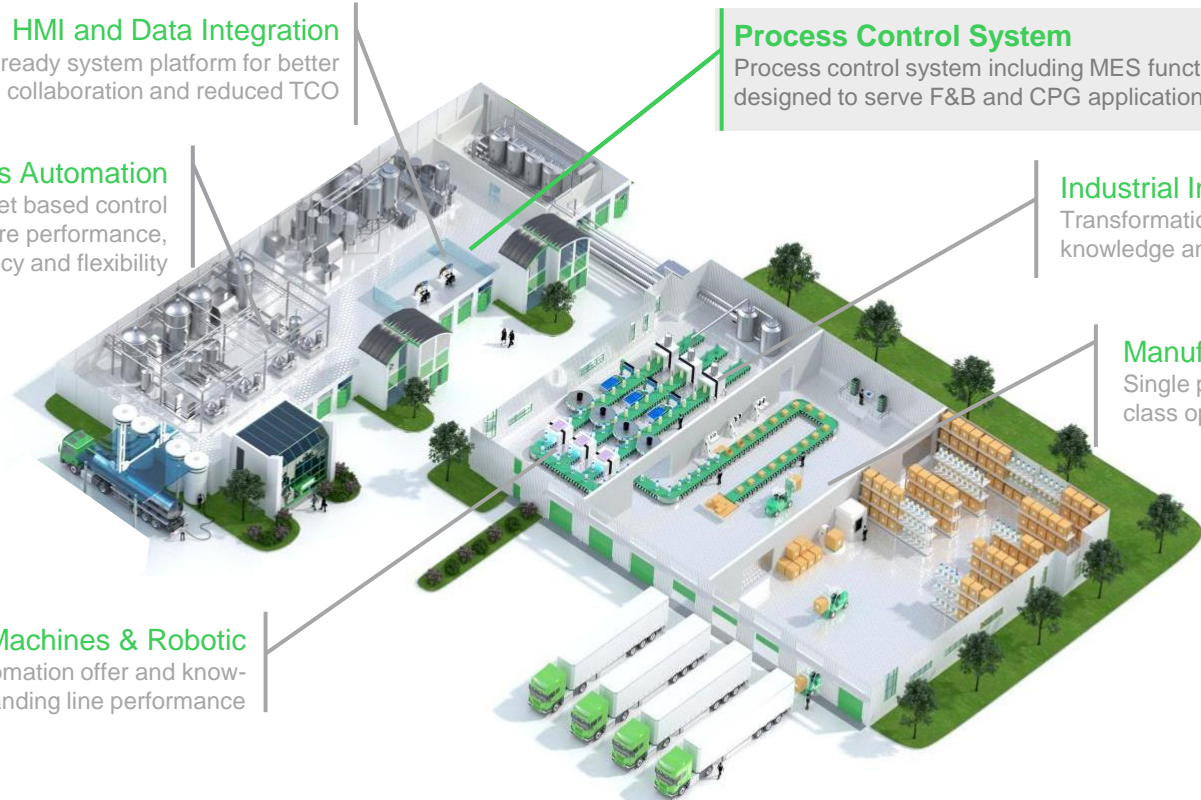
Transformation of your data into actionable knowledge and wisdom

Manufacturing Operation Management

Single plant and Multi-site IT platform for best-in-class operation, performance and quality

Smart Machines & Robotic

Packaging automation offer and know-how for outstanding line performance



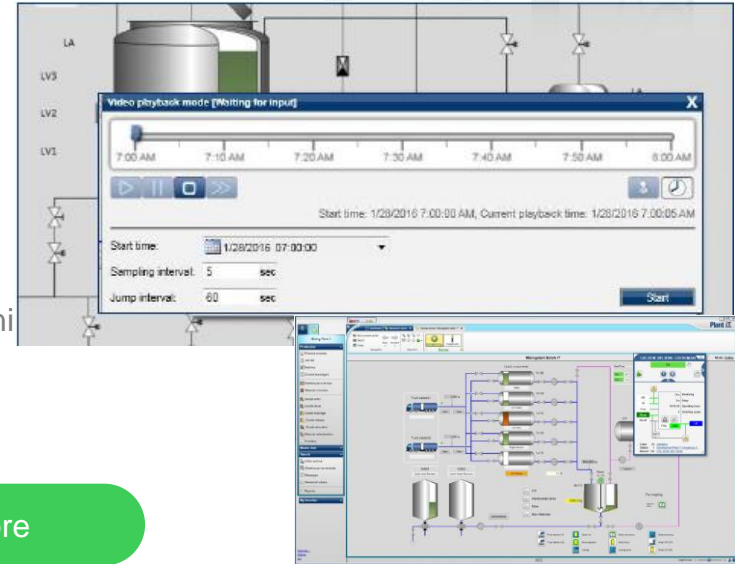
Object oriented & PLC-based process control system

The Solutions

Continuous, PLC-based automation solution whose base systems include a standard **process control system** with integrated recipe management system for hybrid and batch processes.

- Includes MES functionality,
- One central database and on one server
- Standardized user interface, side-bar, ribbon menu and search tools
- Context sensitive user guidance
- Comprehensive alarm management
- Visu-Recorder functionality allowing to replay event for analysis and training
- Phase controllers take care of the processes
- Object Control Matrix control the function of the objects involved
- Automation objects do the job and monitor themselves
- Full transparency down to the single object

[Learn more](#)



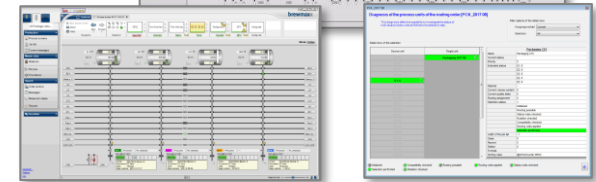
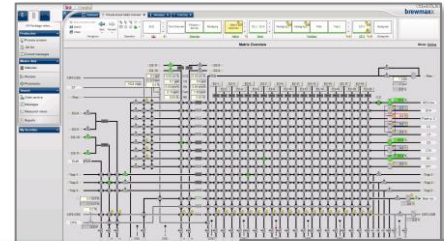
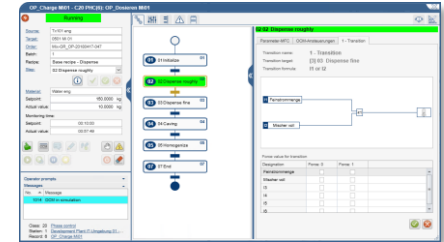
Embedded know-how for the transparency of your process

Business value

- Efficient engineering
 - “Parameterization instead of programming”
 - Open and compiler less system architecture
- Lean system design and operation
- User-friendly interface, developed based on the latest usability standards
- Enhanced audit, traceability and continuous improvement

PRO

- ✓ No more complex PLC coding required
- ✓ Embedded process-specific libraries for simplified configuration and start-up
- ✓ Multi lingual system, available in seven languages, built upon Microsoft Standard software
- ✓ Scalable solution for single stations up to multi server systems



ProLeiT
is now part of

Schneider
Electric

ProLeiT

Schneider
Electric

Plan iT and brewmaxx

Over 2000 installations in more than 110 Countries

Brewing							
Dairies						 <i>Tú, nuestra razón de ser</i>	
Chemistry							
Food						 MAÎTRE CHOCOLATIER SUISSE DEPUIS 1845	
Beverages							
Pharma							

EcoStruxure™ Process Expert



A comprehensive architecture built on secure, field-proven components

The solution

A Complete Solution utilizing Field-Proven components from Connected Products like (Sensors, Electrical devices: power meters, circuit breakers (compact, masterpact), motor starters TesysT, Speed Drives (Altivar family).

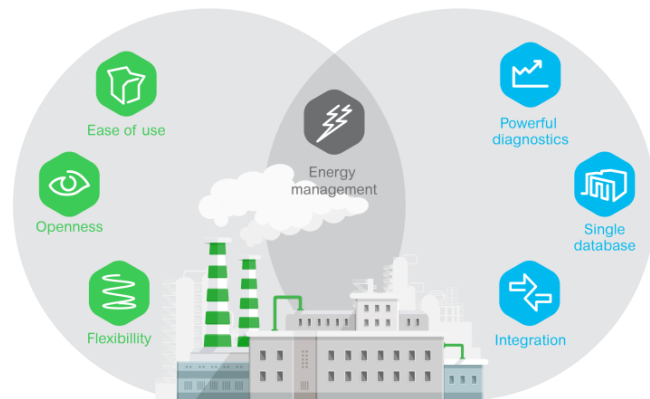
- Connected to Edge control: automation platform base on Modicon families.
- Operation and Engineering Server to Business Information systems.
- Navigation Services
- Alarm Management
- Sequence Of Events
- Simulation / Override / Maintenance
- Version Control
- Operational Audit Trail

[Learn more](#)

Business value

Brings together the **best from the PLC and DCS worlds** and combines it with **integrated energy management features** to deliver superior value throughout the life cycle of a plant.

- Better maintenance capability to reduce downtime
- Maximizes operational profitability, safely



Life Is On



EcoStruxure Process Expert

Maximizes operational profitability, safely



Automation Platform



- Field-proven hardware platform
- Scalable architecture
- Choice of controller based on your application

Communication



- Supports OPC for 3rd party
- Modbus, Profibus protocol for device communication
- Ethernet backbone

Operation



- Runtime Navigation Services
- High Performance graphics for smart and efficient operations
- Audit trail and version control
- Alarm management

Engineering



- Multi-user
- Global database
- Single configuration environment for control & supervision
- Object Oriented System

Libraries



- Ready to use Process Library based on Situational Awareness.
- Segment-specific library, bringing domain expertise
- Advance Process Control
- Energy Management



Casa Granado Brazil

Tradition in premium and sustainable cosmetics



Customer Challenge

- Have a better integration between two production lines and find bottlenecks
- Reduce Time to Market

Solution

- EcoStruxure™ Process Expert
- InBatch
- Modicon M580
- HSBY Modicon Quantum
- Modicon X80 Distributed I/O
- Altivar Drives

Customer Benefits

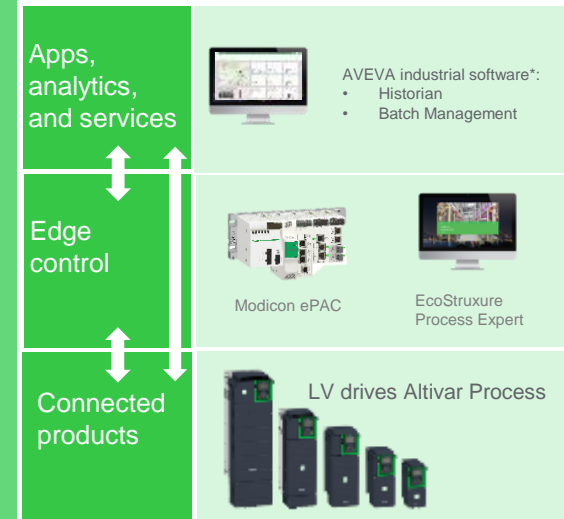
- Compliance with FDA 21 CFR part 11.
- Empowering the workforce through the High performance HMI concept.
- Future-proof solution.
- Lower Time-to-Market
- Better control integration resulting in meaningful analytics and improved production
- Less need for operations and maintenance training with reduced downtime

The Results: Life is On with...Short payback

[Link to Paper](#)

Founded in 1870, Casa Granado is the **oldest Brazilian cosmetics brand**. Focused on **premium products**, Granado produces soaps, moisturizers, colognes, perfumes and other products.

EcoStruxure™ For Food & Beverage
Innovation At Every Level



Aavin Dairy

Digitization boosts productivity & efficiency



Customer Challenges

- Improve productivity to meet growing market demands
- Improve accuracy in milk processing and uniformity in end product quality
- Reduce excessive plant downtime
- Limited monitoring due to manual plant, reducing operational efficiency
- No visibility on energy consumption
- Lack of scalability
- Inability to track operational events
- Lack of asset information
- Lack of life cycle support & maintenance

The Solution

- Scalable & flexible EcoStruxure architecture, including software, that can accommodate future expansion
- Advanced digital technologies enabling transparency, security, reliability, and regulatory compliance
- Standardization through object-based programming

Customer Benefits

- Production increased from 0.2 to 0.3 million litres per day, and scalable up to 0.5 million litres per day
- 50% greater operational efficiency
- Real-time visibility
- Increased flexibility
- Future-proof system
- Simplified operation & maintenance
- Improved energy efficiency using consumption reports

The Results: Life Is On with... 50% increase in milk processing capacity & 50% improvement in operational efficiency

"Schneider Electric's EcoStruxure aims at addressing (industry challenges) by powering ...the dairy industry with advanced digital technologies that ensure transparency, security, regulatory compliance and reliability."

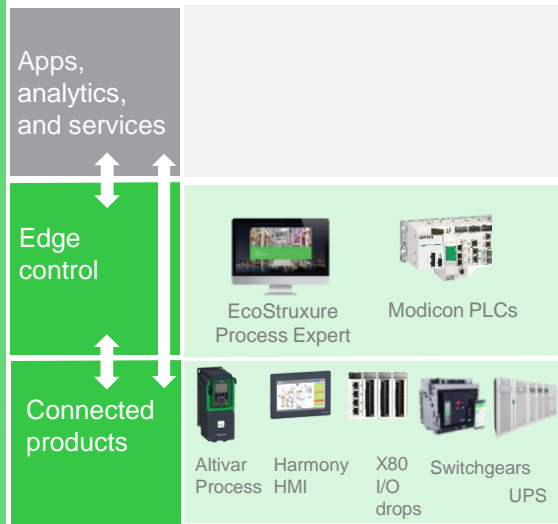
[Link to Paper 1](#)

[Link to Paper 2](#)

Latish Babu
Head – Strategic Customers & Segments
Greater India Zone
Aavin Dairy

Indian milk cooperative promotes economic development of local farming community by procuring, processing & manufacturing milk products

EcoStruxure For Food & Beverage
Innovation At Every Level



* The Schneider Electric industrial software business and AVEVA have merged to trade as AVEVA Group plc, a UK listed company. The Schneider Electric and Life is On trademarks are owned by Schneider Electric and are being licensed to AVEVA by Schneider Electric.

Life Is On | **Schneider Electric**

Cerradinho Bio, Brazil

EcoStruxure Plant delivers Industry of the Future
to ethanol producer



Customer Challenge

- High Mean Time To Repair (MTTR)
- Limited monitoring
- Visibility on energy consumption
- Process Transparency Tracking events
- Obtain asset information / Cybersecurity
- Operational and people safety

The Solution

- EcoStruxure Plant including:
- EcoStruxure Process Expert
- EcoStruxure Augmented Operator Advisor
- Magelis iPC, Altivar Drive, ITD No-Breaks
- Tesys T Ethernet / Easergy P3, LV and MV Panels

Customer Benefits

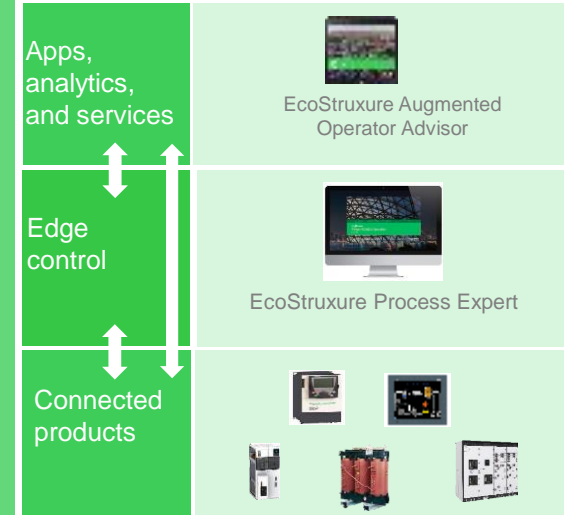
- Operation and engineering traceability
- Reduction of operating errors
- Advanced and quick diagnosis through Hybrid DCS and Augmented Operator Advisor
- Agility to solve problems
- Asset Management and cybersecurity
- Easy maintenance and calibration of assets
- Accident reduction thanks to process transparency.

**The Results: Life is On with... .. Improved
Operational and Production Efficiency
with increased flexibility**

Menu
Back

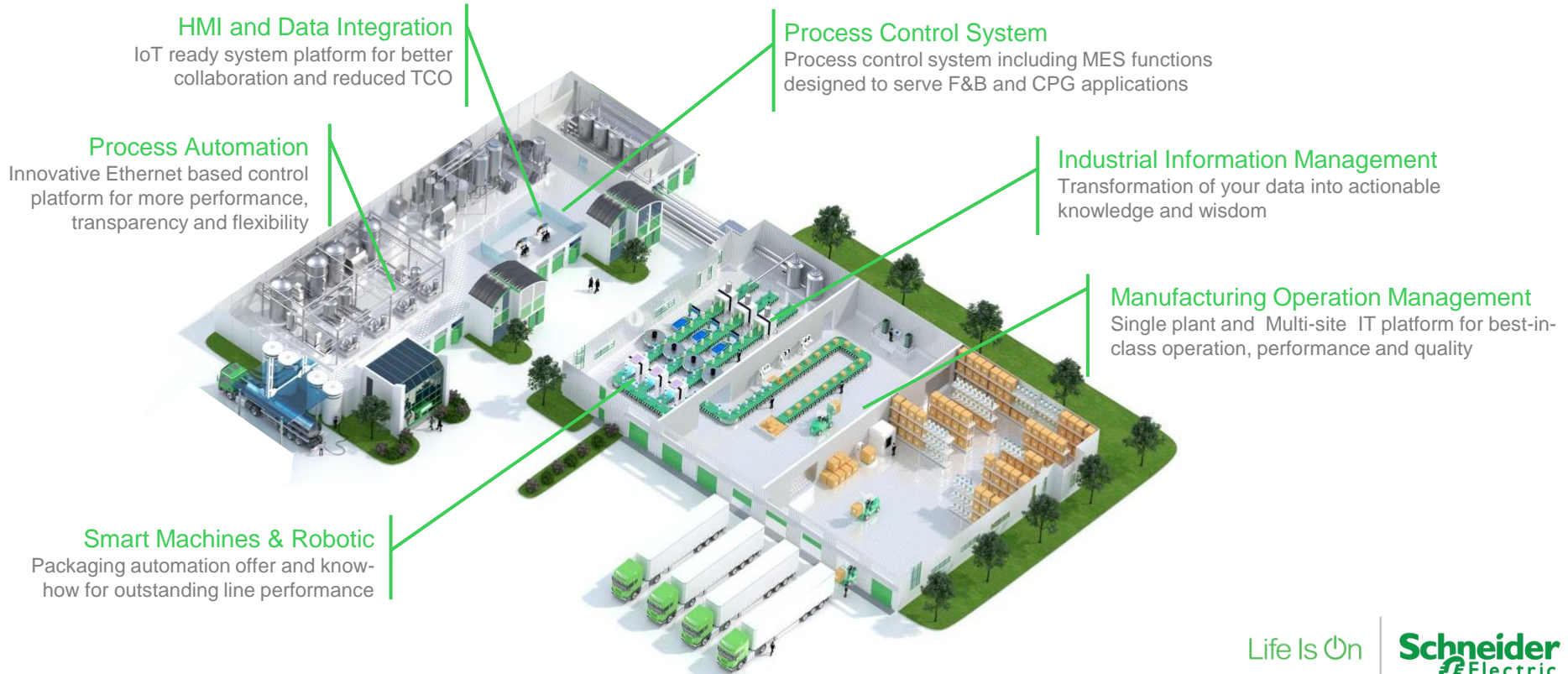
Cerradinho Bio is part
of Cerradinho Par group,
with operations in
sugarcane, agricultural properties,
logistics, gas stations and real estate
projects.

EcoStruxure For Food & Beverage
Innovation At Every Level



Agile Manufacturing

Transforming operations to improve flexibility and profitability



EcoStruxure for Food & Beverage / CPG

Agile manufacturing
Boost manufacturing flexibility and efficiency

- Manufacturing Operation Management
- Industrial Information Management
- Process Control System
- HMI and data Integration
- Process Automation
- Packaging Automation

Efficient facilities
Safer, more available, and greener resources

- Smart Building Management
- Power Safety & Availability
- Power Quality & efficiency
- Renewable Energy & Microgrids
- IT Infrastructure Management

Resilient supply chain
Manage complexity and reduce logistics costs

- Agriculture Efficiency & Sustainability
- Suppliers Management
- Supply Chain Optimization
- Cold Chain Monitoring
- Product Information Management

Food Safety & Traceability
Ensure compliance and trust across the product life cycle

- Food Defense
- Cybersecurity Services
- Digital Calibration
- Raw material traceability
- Production traceability
- Product Identification & Tracking

Energy & Sustainability
Reduce footprint and meet sustainability goals

- Sustainability Consulting
- Energy Demand Services
- Strategic Energy Sourcing
- Enterprise data management
- Energy as a Service

Asset Performance
Maximize return on capital expenditure

- Assessment and Consulting
- Enterprise Asset Management
- Condition Monitoring
- Predictive Analytics
- Line & Process Optimization
- Modernization services

Workforce Empowerment
Improve staff knowledge, productivity and collaboration

- Operator Training Simulator
- Augmented & Virtual Reality
- Workflow Management
- Staff Schedule Management
- Operator Knowledge Sharing

Digital Engineering
Cut time, cost and risks of capital project engineering

- Electrical CAD
- Building Information Modelling
- Integrated Engineering-Design
- Digital Asset Visualization

A photograph of two men in white lab coats and hairnets, wearing safety glasses, leaning on a yellow and black railing in a factory setting. They are engaged in a conversation. The background shows industrial machinery and structures.

Let's talk about

EcoEtruxure™
for Food & Beverage

Life Is On



Schneider
Electric