

The image shows two men in a factory setting. They are standing in front of a large digital display that shows a production dashboard. The dashboard includes a flowchart with green and purple boxes, various data points, and a table. The man on the left is pointing at the screen, and the man on the right is holding a green folder. The background shows industrial machinery and a factory floor.

Agile Manufacturing

EcoStruxure™ boosts manufacturing flexibility & efficiency
in the Food & Beverage, Household and Personal Care industries

Life Is On

Schneider
Electric

Agile Manufacturing

Transforming operations to improve flexibility and profitability

HMI and Data Integration

IoT ready system platform for better collaboration and reduced TCO

Process Control System

Process control system including MES functions designed to serve F&B and CPG applications

Process Automation

Innovative Ethernet based control platform for more performance, transparency and flexibility

Industrial Information Management

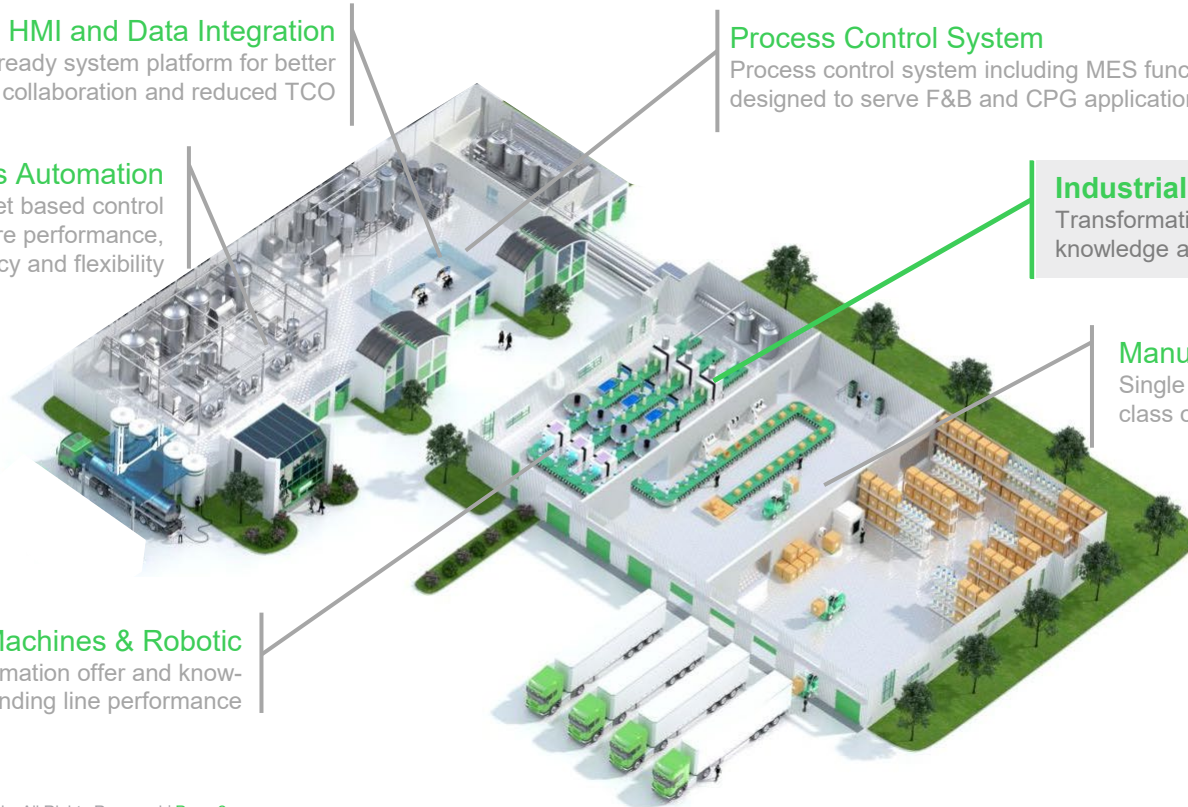
Transformation of your data into actionable knowledge and wisdom

Manufacturing Operation Management

Single plant and Multi-site IT platform for best-in-class operation, performance and quality

Smart Machines & Robotic

Packaging automation offer and know-how for outstanding line performance



AVEVA Insight

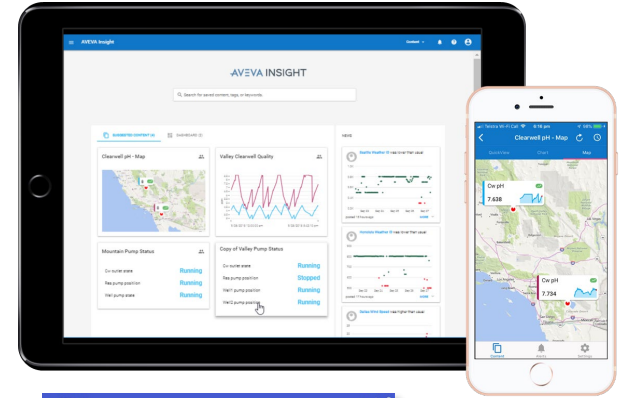
Information Management: more than 'just' a historian

The solution

- Insight is a cloud-based industrial solution for operations: Historical & Events, Autogenerated Dashboards, Process Graphics, Equipment efficiency analysis
- Make operational data accessible and empower your workforce with Insight – anywhere, anytime, any device

Insight enables users to

- Connect with critical production data – anywhere, anytime, on any device
- Unlock plant performance and efficiency KPIs such as OEE and asset utilisation
- Compare across assets, plants or fleets
- Understand the performance and state of production process in visual context
- Create personalised content, dashboards and alerts
- Share and collaborate – across and between teams



Learn more

AVEVA

Schneider
Electric

EcoStruxure™ Clean In Place Advisor

Unveiling sources of optimization and documenting evidence of proper cleaning



The solution

- Performance Assessment unveil current status of your CIP stations
- Clean-In-Place Advisor monitors real-time operation and document optimization possibilities and cleaning evidences

Typical benefits

- Reduced water and carbon footprint:
 - Up to **30%** energy savings
 - Up to **5%** water and chemical savings
- Higher productivity: up to **15%**
- Improved traceability
- Typical ROI from **6 – 8 months**

Learn more

Life Is On

Schneider
Electric



Imana Food Ltd, South Africa

HACCP accreditation with help from Wonderware



Customer Challenge

- Full traceability of all materials of the blending process
- Tracking of all incoming raw materials used in more than 150 recipes
- Production data linked into the company's ERP system
- Gain HACCP certification
- Improve the quality of finished goods
- Reduce inventory discrepancies

The Solution

- System Platform (Powered by Wonderware)
- Historian

Customer Benefits

- Better insight into the blending operation: more consistent product quality from following recipes exactly
- Improved raw material stock control
- Real-time blend closure in the ERP system
- Improved management of the blending process

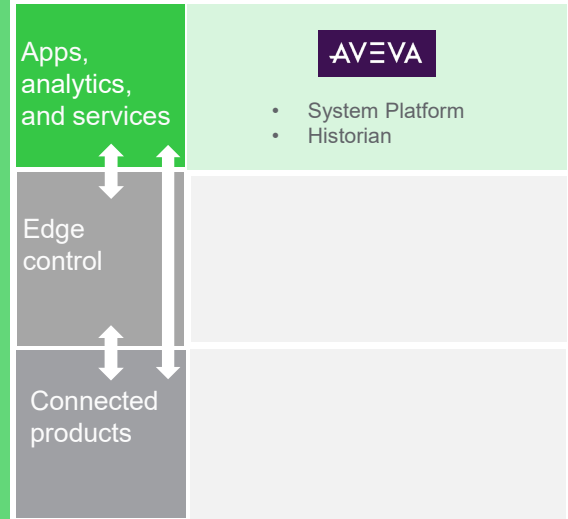
The Results: Life is On with... HACCP certification achieved within 3 months of going live

"Imana Foods would not have achieved HACCP accreditation without this solution in place".
Paul Alcock,
MD, Imana Foods

[Link to Paper](#)

Leader in the South African Soya Mince market. Producer of Packet Soups and Gravy Mix since 1984

EcoStruxure For Food & Beverage
Innovation At Every Level



Life Is On



Eker Dairy, Turkey

Significant increases with Wonderware



Customer Challenge

- Needed a powerful & flexible platform to create templates

The Solution

- System Platform (Powered by Wonderware)
- Historian

Customer Benefits

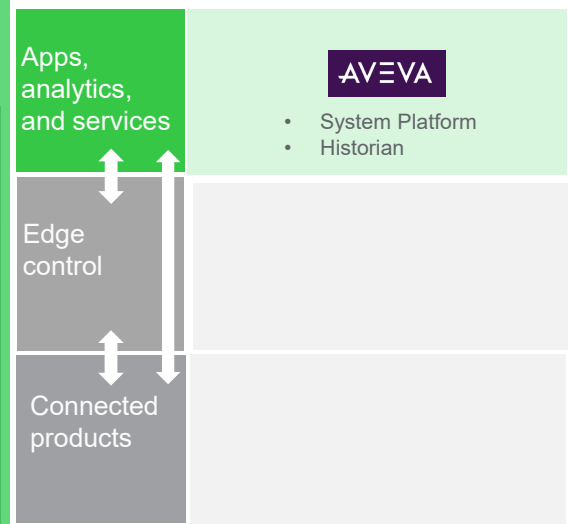
- Flexibility to process data quickly & record them at any time
- Quickly identify the problems that occur during production and fix them within a short time by monitoring the deviations
- Monitoring of equipment and applications allowed an increase of the OEE by improving the machine coordination

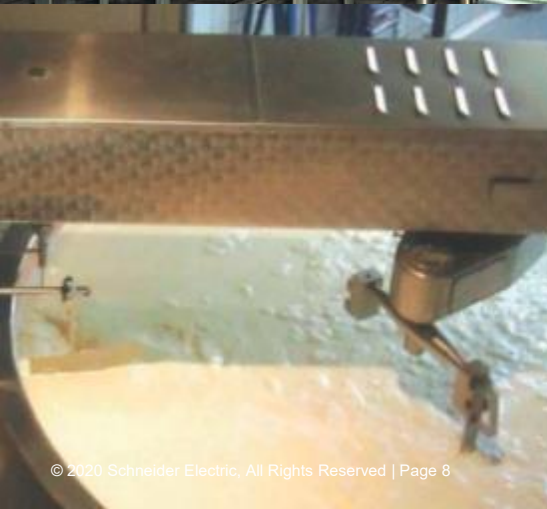
The Results: Life is On with... Increased Product Quality & traceability to end-users.

[Link to Web](#)
[Link to Video](#)

Producer of Yogurt and dairy products: **600 tons per day**

EcoStruxure For Food & Beverage
Innovation At Every Level





Measurable savings through CIP optimization

European Dairy Products Producer

Customer Challenge

- Reduction of Energy spend within the plant
- CIP operations focus to optimize energy spend

The Solution

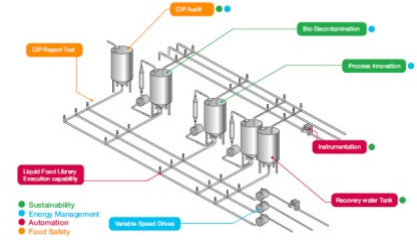
- EcoStruxure Cleaning Advisor: including
- On-site assessment: 2 days
- Walkthrough audit on utilities
- Monitoring & optimization software tool
- Training of operators

Customer Benefits

- CIP operations optimized
- **217,000€ savings per year**
- Deployment of the methodology and solution to other plants

The Results: Life is On with... **Payback**
< 6 months

Cheese Plant. Annual Energy bill 56 GWh/year.
Average production 400 kWh/ton



CIP Comparison

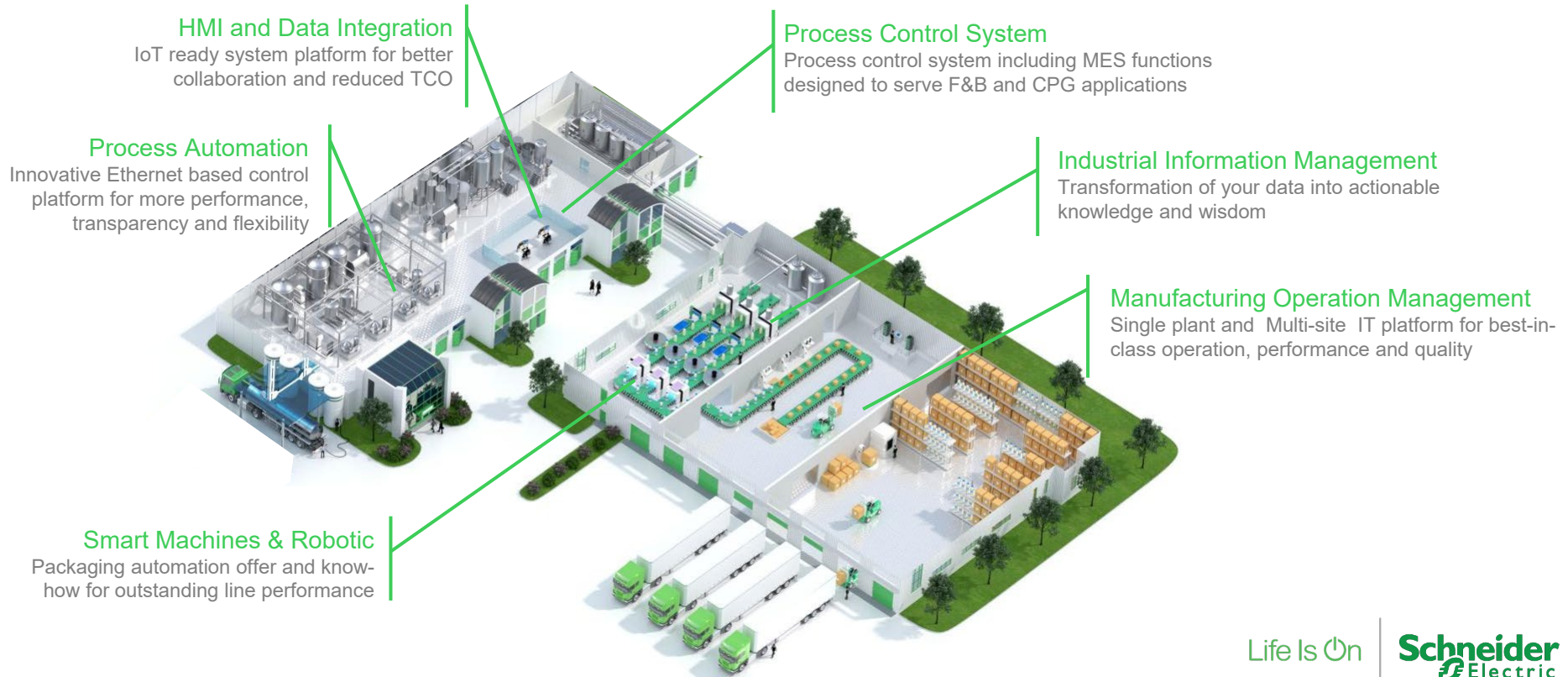


Life is On



Agile Manufacturing

Transforming operations to improve flexibility and profitability



EcoStruxure for Food & Beverage / CPG

Agile manufacturing Boost manufacturing flexibility and efficiency

- Manufacturing Operation Management
- Industrial Information Management
- Process Control System
- HMI and data Integration
- Process Automation
- Packaging Automation

Efficient facilities Safer, more available, and greener resources

- Smart Building Management
- Power Safety & Availability
- Power Quality & efficiency
- Renewable Energy & Microgrids
- IT Infrastructure Management

Resilient supply chain Manage complexity and reduce logistics costs

- Agriculture Efficiency & Sustainability
- Suppliers Management
- Supply Chain Optimization
- Cold Chain Monitoring
- Product Information Management

Food Safety & Traceability Ensure compliance and trust across the product life cycle

- Food Defense
- Cybersecurity Services
- Digital Calibration
- Raw material traceability
- Production traceability
- Product Identification & Tracking

Energy & Sustainability Reduce footprint and meet sustainability goals

- Sustainability Consulting
- Energy Demand Services
- Strategic Energy Sourcing
- Enterprise data management
- Energy as a Service

Asset Performance Maximize return on capital expenditure

- Assessment and Consulting
- Enterprise Asset Management
- Condition Monitoring
- Predictive Analytics
- Line & Process Optimization
- Modernization services

Workforce Empowerment Improve staff knowledge, productivity and collaboration

- Operator Training Simulator
- Augmented & Virtual Reality
- Workflow Management
- Staff Schedule Management
- Operator Knowledge Sharing

Digital Engineering Cut time, cost and risks of capital project engineering

- Electrical CAD
- Building Information Modelling
- Integrated Engineering-Design
- Digital Asset Visualization

A photograph of two men in white lab coats and hairnets, wearing safety glasses, leaning on a yellow and black railing in a large industrial facility. They appear to be in conversation. The background shows complex machinery and structural elements of the factory.

Let's talk about

EcoEtruxure™
for Food & Beverage

Life Is On



Schneider
Electric