



# Smart Facilities solutions

We help our customers create future-ready pharmaceutical manufacturing and biotech facilities

BUILDING MANAGEMENT

# Smart Facilities

Safer and more available environment

## Building Management

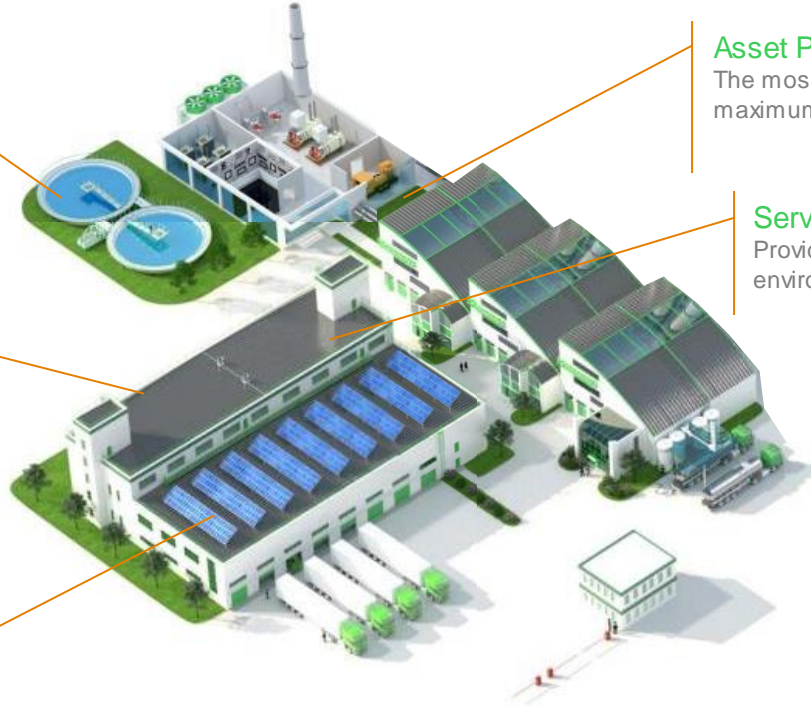
Provide the best conditions for your manufacturing operations

## Environmental Control

Make sure your production environment comply with requirements and regulations

## Power Safety & Availability

Standardization, site assessment, and predictive maintenance for Electrical Distribution



## Asset Performance Management

The most comprehensive solution for a maximum economic return of your assets

## Server Rooms management

Provide self contained and secure computing environment for your on-premise applications

# Building Management (1/3)

Provide the best conditions for your manufacturing operations



- Building Management Systems (BMS) have an impact on timely, cost-effective delivery and compliant operations for Life Sciences facilities.
- Turnaround of a properly-qualified BMS is the last critical link in the overall facility delivery chain: a poorly designed, operated or maintained BMS can compromise product quality and research data, drawing the attention of regulatory authorities.

# Building Management (2/3)

Provide the best conditions for your manufacturing operations



## The Solution

- Integration of all facility subsystems (HVAC control, lighting, access control, CCTV, fire detection) through a reliable Building Management system will help you meeting your objective of providing safe and effective products to the patients.

[EcoStruxure™ Building Operation](#)

# Building Management (3/3)

Provide the best conditions for your manufacturing operations



## The Benefits

A reliable and efficient Building Management System should enable you to save money throughout your building system lifecycle:

- Design and installation costs savings of 24%
- Operational costs savings by 10%
- Energy costs savings of up to 35%
- Upgrade and retrofit.

[Download information](#)

# University of Oslo's new Life Science Building, Norway

Developing state-of-the-art Norway's largest and most technical advanced University building with research laboratory for life sciences



Photo illustration: Ratio arkitekter/MIR

### Customer Challenges

- Schneider Electric plays an important part of developing systems for the life-science of tomorrow
- Digital technical solutions to ensure the No.1 high performance building in Norway

### The Solution

- EcoStruxure Building Operations, EBO 3.0
- PowerTags and PME
- Advisors

### Other potential solutions from Schneider

- Fire Expert, Emergency lighting
- Canalis, Cable trays, LAN, final distribution
- Transformers, switch gears
- UPS solutions

### Customer Benefits

- Future-oriented technology, flexible infrastructure and integrated building
- Monitor building data for insight and knowledge
- Secure energy consumption – BREEAM Excellent
- Reduce operating costs and climate footprint
- High comfort for students and personnel

### The Results: Life Is On with...

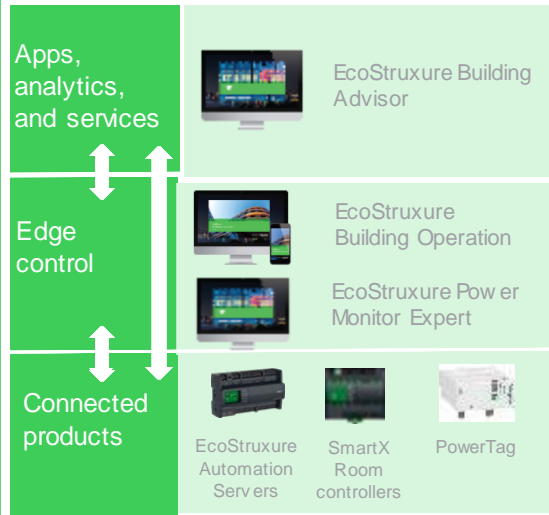
Norway's largest university building that will be environmentally friendly, easy to operate and ready for future technology.

*Schneider Electric Norway has been awarded the contract for a BMS and automation system that will make Norway's largest university building environmentally friendly and easy to operate. We are confident that Schneider Electric Norway will deliver energy-efficient solutions that ensure easy operation, low costs, the best infection control and indoor climate.*

Per Roger Johansen,  
Project Director  
Life-Science Building, Statsbygg

A building of **66.700** square meters to be ready in 2024, will be the new European arena for interdisciplinary collaboration, to help solve societal challenges in health and environment.

## EcoStruxure™ For Life Sciences



[Webpage](#)  
[Video](#)



# Bio-Safety Level 4 Laboratory, UK

Building safe and secure high containment laboratory



## Customer Challenges

Robust building design for a biosafe and bio-secure BSL3/BSL4 laboratory

- Strict pressure regime, cascades within +/-5Pa
- HVAC interface with and monitoring alarms of specialist systems (Fumigation chambers, APR doors, autoclaves, ETP, bio-safety cabinets etc.)
- Robust logging of all incidents and alarms – fast (1sec), manual change – for regulatory records

## Solution

- BMS and SMS (Secondary Monitoring System)
- Room differential gauges for containment room
- Interface co-ordination between all 3rd party equipment and electrical power (by SE)
- Off site and on-site training
- BMS / SMS site maintenance service

## Customer Benefits

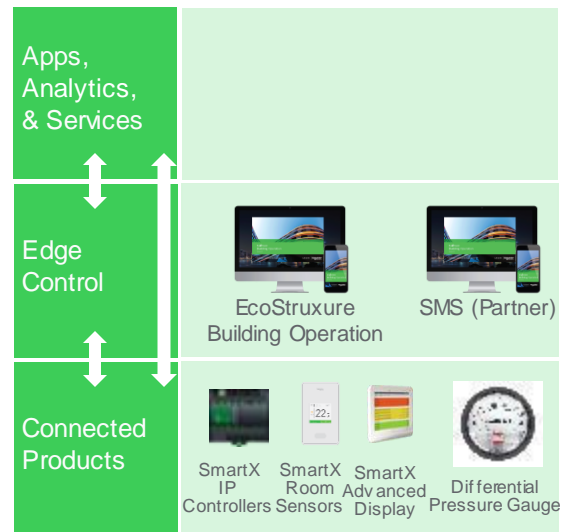
- Enabled the customer to attain BSL4 license from HSE (Health and Safety Executive) in a first time
  - Engaged from early design with value engineering and risk mitigation strategies
  - GEP and ACDP3/4 design guidance for documentation
  - Implement lesson learnt from mock-up lab
- Build the laboratory on time and within budget
- Site hosts for training and international references

## The Results: Life Is On with...

Delivering complex projects from early design to construction on time and within budget

A new, state of the art, animal disease, high containment, bio-research facility for **BSL3** and **BSL4** classified pathogens

EcoStruxure™ for Life Sciences



[Video](#)

Life Is On

Schneider Electric

Life Is On



**Schneider**  
Electric

